

**Case File No. 21-0072**  
**Blaine Hy Vee Second Addition**



BlaineMN.gov

Blaine Planning Department / 10801 Town Square Dr NE / Blaine, MN 55449 / (763) 785-6180



# BLAINE HY VEE SECOND ADDITION

CITY OF BLAINE  
COUNTY OF ANOKA  
SEC. 7, TWP. 31, RNG. 23

KNOW ALL PERSONS BY THESE PRESENTS: That Hy-Vee Inc., an Iowa corporation, owner of the following described property:

Outlot B, BLAINE HY VEE, Anoka County, Minnesota.

Has caused the same to be surveyed and platted as BLAINE HY VEE SECOND ADDITION and does hereby dedicate to the public for public use the public ways and the drainage and utility easements as created by this plat.

In witness whereof said Hy-Vee Inc., an Iowa corporation, has caused these presents to be signed by its proper officer this \_\_\_\_ day of \_\_\_\_\_, 20\_\_.

Hy-Vee Inc.

Jeffrey Markey, Executive Vice President

Michael Jurgens, Secretary

STATE OF MINNESOTA

COUNTY OF \_\_\_\_\_

This instrument was acknowledged before me this \_\_\_\_ day of \_\_\_\_\_, 20\_\_ by Jeffrey Markey, Executive Vice President of Hy-Vee Inc., an Iowa corporation, on behalf of the corporation.

\_\_\_\_\_(Signature)

\_\_\_\_\_(Print Name)

Notary Public, \_\_\_\_\_ County, Minnesota

My Commission Expires \_\_\_\_\_

STATE OF MINNESOTA

COUNTY OF \_\_\_\_\_

This instrument was acknowledged before me this \_\_\_\_ day of \_\_\_\_\_, 20\_\_ by Michael Jurgens, Secretary of Hy-Vee Inc., an Iowa corporation, on behalf of the corporation.

\_\_\_\_\_(Signature)

\_\_\_\_\_(Print Name)

Notary Public, \_\_\_\_\_ County, Minnesota

My Commission Expires \_\_\_\_\_

I, Larry J. Huhn do hereby certify that this plat was prepared by me or under my direct supervision; that I am a duly Licensed Land Surveyor in the State of Minnesota; that this plat is a correct representation of the boundary survey; that all mathematical data and labels are correctly designated on this plat; that all monuments depicted on this plat have been, or will be correctly set within one year; that all water boundaries and wet lands, as defined in Minnesota Statutes, Section 505.01, Subd. 3, as of the date of this certificate are shown and labeled on this plat, and all public ways are shown and labeled on this plat.

Dated this \_\_\_\_ day of \_\_\_\_\_, 20\_\_.

Larry J. Huhn, Licensed Land Surveyor  
Minnesota License No. 24332

STATE OF MINNESOTA

COUNTY OF \_\_\_\_\_

This instrument was acknowledged before me this \_\_\_\_ day of \_\_\_\_\_, 20\_\_ by Larry J. Huhn.

\_\_\_\_\_(Signature)

\_\_\_\_\_(Print Name)

Notary Public, \_\_\_\_\_ County, Minnesota

My Commission Expires \_\_\_\_\_

CITY COUNCIL, CITY OF BLAINE, MINNESOTA

This plat of BLAINE HY VEE SECOND ADDITION was approved and accepted by the City Council of the City of Blaine, Minnesota at a regular meeting thereof held this \_\_\_\_ day of \_\_\_\_\_, 20\_\_, and said plat is in compliance with the provisions of Minnesota Statutes, Section 505.03, Subd. 2.

CITY COUNCIL, CITY OF BLAINE, MINNESOTA

By: \_\_\_\_\_ Mayor By: \_\_\_\_\_ Clerk

COUNTY SURVEYOR

I hereby certify that in accordance with Minnesota Statutes, Section 505.021, Subd. 11, this plat has been reviewed and approved this \_\_\_\_ day of \_\_\_\_\_, 20\_\_.

By \_\_\_\_\_

David M. Ziegemeier

Anoka County Surveyor

COUNTY AUDITOR/TREASURER

Pursuant to Minnesota Statutes, Section 505.021, Subd. 9, taxes payable in the year 20\_\_ on the land hereinbefore described have been paid. Also, pursuant to Minnesota Statutes, Section 272.12, there are no delinquent taxes and transfer entered this \_\_\_\_ day of \_\_\_\_\_, 20\_\_.

By \_\_\_\_\_ Deputy

Property Tax Administrator

COUNTY RECORDER/REGISTRAR OF TITLES

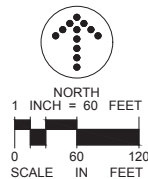
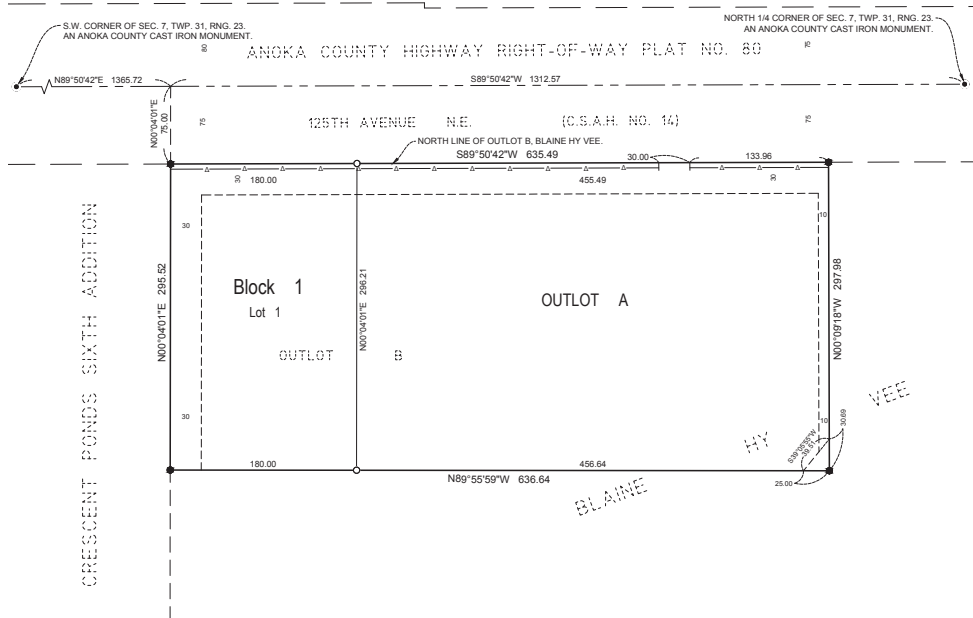
COUNTY OF ANOKA, STATE OF MINNESOTA

I hereby certify that this plat of BLAINE HY VEE SECOND ADDITION was filed in the office of the County Recorder/Registrar of Titles for public record on this \_\_\_\_

day of \_\_\_\_\_, 20\_\_, at \_\_\_\_ o'clock \_\_\_\_ M. and was duly recorded as Document Number \_\_\_\_\_.

By \_\_\_\_\_ Deputy

County Recorder/Registrar of Titles



- Denotes 1/2 inch by 14 inch iron pipe monument set and marked by License No. 24322.
  - Denotes 1/2 inch iron pipe monument found and marked by License No. 44110.
  - △— Denotes Controlled Access acquired by the County of Anoka per Doc. No. 1672857.
- For the purposes of this plat the North line of the OUTLOT B, BLAINE HY VEE is assumed to bear South 89°50'42\"/>