

BlaineMN.gov

Case File No. 21-0063 Blaine 35 Second Addition

Blaine Planning Department / 10801 Town Square Dr NE / Blaine, MN 55449 / (763) 785-6180



BLAINE 35 SECOND ADDITION

CITY OF BLAINE
COUNTY OF ANOKA
SEC. 34, T. 31N R. 23W

KNOW ALL PERSONS BY THESE PRESENTS: That AX Blaine 35 L.P, a Delaware limited partnership, owner of the following described property:

Outlot A, BLAINE 35, according to the recorded plat thereof, Anoka County, Minnesota.

Has caused the same to be surveyed and platted as BLAINE 35 SECOND ADDITION and does hereby dedicate to the public for public use the drainage and utility easements as created by this plat.

In witness whereof said AX Blaine 35 L.P, a Delaware limited partnership, has caused these presents to be signed by its proper officer this

_____ day of _____, 20_____.

AX Blaine 35 L.P

By: AX Blaine 35, LLC, its general partner

By: _____

PRINTED NAME: _____, TITLE: _____

STATE OF _____

COUNTY OF _____

This instrument was acknowledged before me on _____ day of _____, 20____ by _____, the _____ of AX Blaine 35, LLC, as general partner of AX Blaine 35 L.P, a Delaware limited partnership, on behalf of the partnership.

_____ (Signature)

_____ (Print Name)

Notary Public _____ County, _____

My commission expires _____

I Eric A. Roeser do hereby certify that this plat was prepared by me or under my direct supervision; that I am a duly Licensed Land Surveyor in the State of Minnesota; that this plat is a correct representation of the boundary survey; that all mathematical data and labels are correctly designated on this plat; that all monuments depicted on this plat have been, or will be correctly set within one year; that all water boundaries and wet lands, as defined in Minnesota Statutes, Section 505.01, Subd. 3, as of the date of this certificate are shown and labeled on this plat; and all public ways are shown and labeled on this plat.

Dated this _____ day of _____, 20____.

Eric A. Roeser, Licensed Land Surveyor
Minnesota License No. 47476

STATE OF _____

COUNTY OF _____

This instrument was acknowledged before me this _____ day of _____, 20____ by Eric A. Roeser.

_____ (Signature)

_____ (Print Name)

Notary Public _____ County, _____

My commission expires _____

CITY COUNCIL, CITY OF BLAINE, MINNESOTA

This plat of BLAINE 35 SECOND ADDITION was approved and accepted by the City Council of the City of Blaine, Minnesota at a regular meeting thereof held this

_____ day of _____, 20____, and said plat is in compliance with the provisions of Minnesota Statutes, Section 505.03, Subd. 2.

City Council, City of Blaine, Minnesota

By: _____, Mayor

By: _____, Clerk

COUNTY SURVEYOR

I hereby certify that in accordance with Minnesota Statutes, Section 505.021, Subd. 11, this plat has been reviewed and approved this _____ day of

_____, 20_____.

By: _____
Charles F. Gitzen
Anoka County Surveyor

COUNTY AUDITOR/TREASURER

Pursuant to Minnesota Statutes, Section 505.021, Subd. 9, taxes payable in the year 20_____ on the land hereinbefore described have been paid. Also, pursuant to

Minnesota Statutes, Section 272.12, there are no delinquent taxes and transfer entered this _____ day of _____, 20_____.

Property Tax Administrator

By _____, Deputy

COUNTY RECORDER/REGISTRAR OF TITLES

County of Anoka, State of Minnesota

I hereby certify that this plat of BLAINE 35 SECOND ADDITION was filed in the office of the County Recorder/Registrar of Titles for public record on this

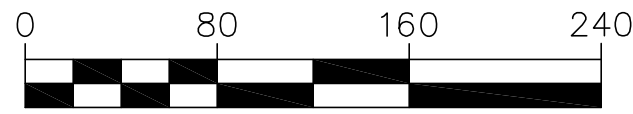
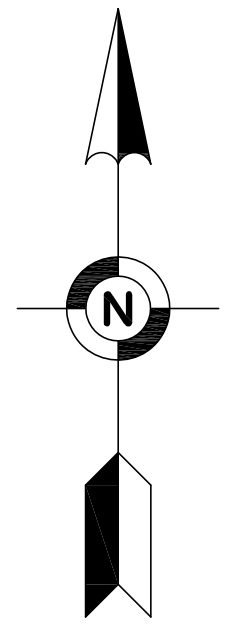
_____ day of _____, 20____, at _____ o'clock ____M. and was duly recorded as Document Number _____.

County Recorder/Registrar of Titles

By _____, Deputy

BLAINE 35 SECOND ADDITION

CITY OF BLAINE
COUNTY OF ANOKA
SEC. 34, T. 31N R. 23W



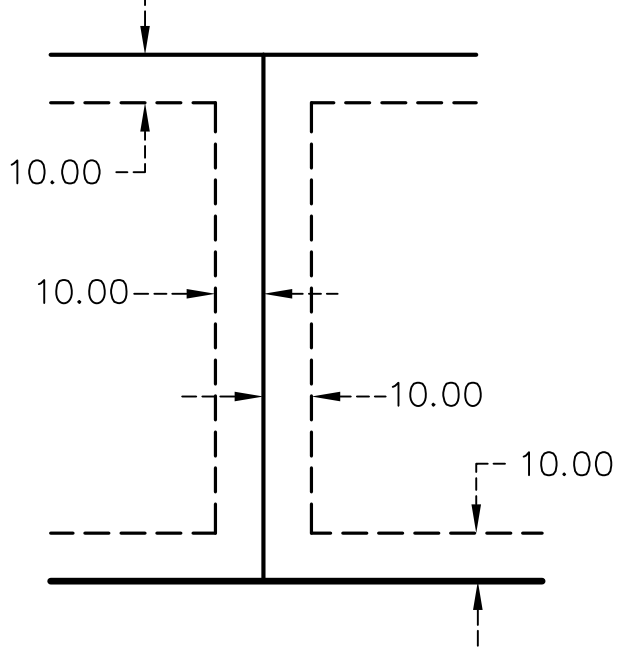
SCALE IN FEET
1 INCH = 80 FEET

THE NORTH LINE OF OUTLOT A, BLAINE 35
IS ASSUMED TO BEAR
SOUTH 89 DEGREES 45 MINUTES 24 SECONDS EAST.

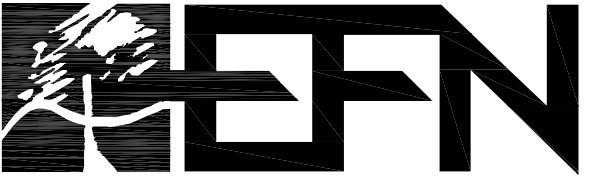
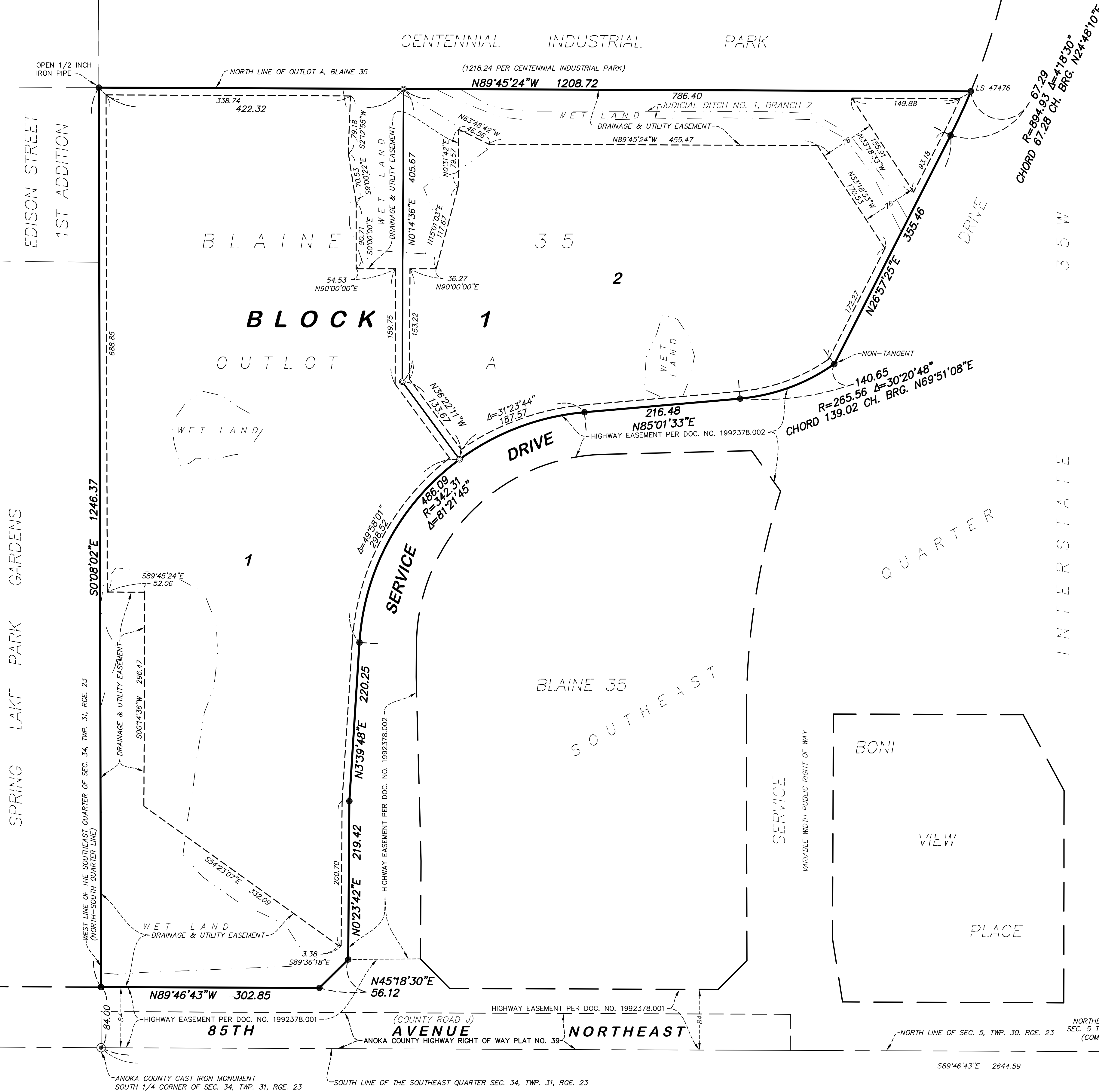
- FOUND 1/2 INCH IRON PIPE MARKED WITH LICENSE NUMBER 44123 UNLESS OTHERWISE NOTED
- ⊙ SET 1/2 INCH BY 14 INCH IRON PIPE WITH LICENSE NUMBER 47476
- SET BRASS DISK MARKED WITH LICENSE NUMBER 47476
- ⊙ SET MAG NAIL

--- DENOTES EDGE OF WET LAND

DRAINAGE AND UTILITY EASEMENTS ARE SHOWN THUS:
(NOT TO SCALE)



BEING 10 FEET IN WIDTH AND ADJOINING SIDE LOT LINES,
ADJOINING REAR LOT LINES, ADJOINING STREET LINES AS
SHOWN ON THE PLAT, UNLESS OTHERWISE INDICATED.



Egan, Field & Nowak, Inc.
land surveyors since 1872