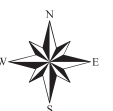


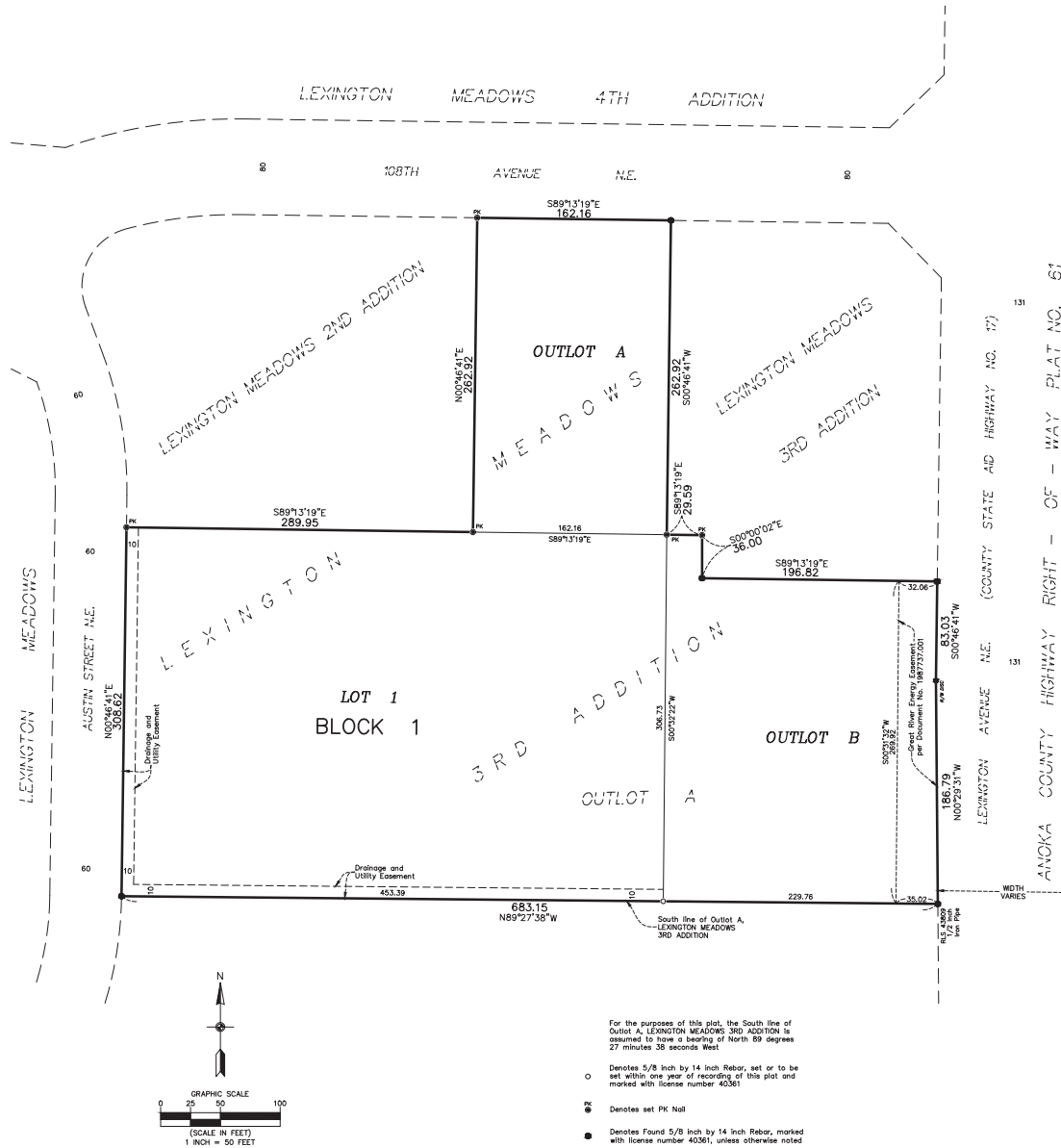
Case File No. 21-0045
Lexington Meadows 5th Addition

Blaine Planning Department / 10801 Town Square Dr NE / Blaine, MN 55449 / (763) 785-6180



LEXINGTON MEADOWS 5TH ADDITION

CITY OF BLAINE
COUNTY OF ANOKA
SEC. 23, TWP. 31, RGE. 23



KNOW ALL PERSONS BY THESE PRESENTS: That Lexington Meadows LLC, a Minnesota limited liability company, owner of the following described property:

Outlot A, LEXINGTON MEADOWS 3RD ADDITION, according to the recorded plat thereof, Anoka County, Minnesota.

Has caused the same to be surveyed and platted as LEXINGTON MEADOWS 5TH ADDITION and does hereby dedicate to the public for public use the public ways and the drainage and utility easements as shown on this plat.

In witness whereof said Lexington Meadows LLC, a Minnesota limited liability company, has caused these presents to be signed by its proper officer this ____ day of _____, 20____.

LEXINGTON MEADOWS LLC
By: WELLINGTON PROPERTIES LLC, its Manager

Stephen B. Wellington, Jr., Chief Manager

STATE OF _____
COUNTY OF _____

This instrument was acknowledged before me on _____ by Stephen B. Wellington, Jr., Chief Manager of Wellington Properties LLC, a Minnesota limited liability company, manager of Lexington Meadows LLC, a Minnesota limited liability company.

(Signed)

(Printed)

Notary Public, _____

My commission expires _____

I, Thomas R. Balluff, do hereby certify that this plat was prepared by me or under my direct supervision; that I am a duly Licensed Land Surveyor in the State of Minnesota; that this plat is a correct representation of the boundary survey; that all mathematical data and labels are correctly designated on this plat; that all monuments depicted on this plat have been, or will be correctly set within one year; that all water boundaries and wet lands, as defined in Minnesota Statutes, Section 505.01, Subd. 3, as of the date of this certificate are shown and labeled on this plat; and all public ways are shown and labeled on this plat.

Dated this ____ day of _____, 20____.

Thomas R. Balluff, Licensed Land Surveyor
Minnesota License No. 40361

STATE OF _____
COUNTY OF _____

This instrument was acknowledged before me on _____ by Thomas R. Balluff.

(Signed)

(Printed)

Notary Public, _____

My commission expires _____

CITY COUNCIL, CITY OF BLAINE, MINNESOTA

This plat of LEXINGTON MEADOWS 5TH ADDITION was approved and accepted by the City Council of the City of Blaine, Minnesota at a regular meeting thereof held this ____ day of _____, 20____, and sold plat is in compliance with the provisions of Minnesota Statutes, Section 505.03, Subd. 2.

CITY COUNCIL, CITY OF BLAINE, MINNESOTA

By _____, Mayor By _____, Clerk

COUNTY SURVEYOR

I hereby certify that in accordance with Minnesota Statutes, Section 505.021, Subd. 11, this plat has been reviewed and approved this ____ day of _____, 20____.

By _____

Charles F. Glitz
Anoka County Surveyor

COUNTY AUDITOR/TREASURER

Pursuant to Minnesota Statutes, Section 505.021, Subd. 9, taxes payable in the year 20____ on the land hereinbefore described have been paid. Also, pursuant to Minnesota Statutes, Section 272.12, there are no delinquent taxes and transfer entered this ____ day of _____, 20____.

Property Tax Administrator

By _____, Deputy

COUNTY RECORDER/REGISTRAR OF TITLES

County of Anoka, State of Minnesota

I hereby certify that this plat of LEXINGTON MEADOWS 5TH ADDITION was filed in the office of the County Recorder/Registrar of Titles for public record on this ____ day of _____, 20____, at ____ o'clock ____ M., and was duly recorded as Document Number _____.

County Recorder/Registrar of Titles

By _____, Deputy

**CARLSON
MCCAIN**
ENGINEERING \ SURVEYING \ ENVIRONMENTAL