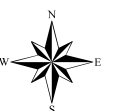


Case File No. 20-0024
Centerview Elementary/SLP Schools ISD #16

Blaine Planning Department / 10801 Town Square Dr NE / Blaine, MN 55449 / (763) 785-6180



CITY OF BLAINE
COUNTY OF ANOKA
SEC. 20 & 21, T. 31, R. 23

I Brian Person do hereby certify that this plat was prepared by me or under my direct supervision; that I am a duly Licensed Land Surveyor in the State of Minnesota; that this plat is a correct representation of the boundary survey; that all mathematical data and labels are correctly designated on this plat; that all monuments depicted on this plat have been, or will be correctly set within one year; that all water boundaries and wet lands, as defined in Minnesota Statutes, Section 505.01, Subd. 3, as of the date of this certificate are shown and labeled on this plat; and all public ways are shown and labeled on this plat.

I hereby certify that in accordance with Minnesota Statutes, Section 505.021, Subd. 11, this plat has been reviewed and approved
this _____ day of _____, 20____.

This instrument was acknowledged before me this ____ day of _____, 20____ by Jeff Ronneberg, Superintendent of Independent School District #16, a public body under the laws of the state of Minnesota, on behalf of the Commission.

This instrument was acknowledged before me this _____ day of _____, 20__ by
Brian Person.

This instrument was acknowledged before me this ____ day of _____, 20____ by Todd M. Johnson Executive Director of Minnesota Amateur Sports Commission, an agency of the State of Minnesota established under Chapter 240A of Minnesota Statutes, on behalf of the Commission.

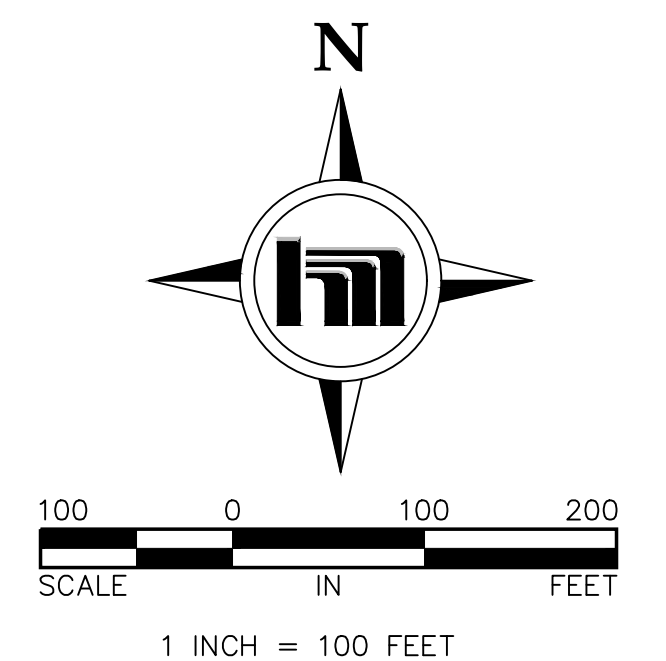
My commission expires _____

This plat of INDEPENDENT SCHOOL DISTRICT 16 SECOND ADDITION was approved and accepted by the City Council of the City of Blaine, Minnesota at a regular meeting thereof held this _____ day of _____, 20____, and said plat is in compliance with the provisions of Minnesota Statutes, Section 505.03, Subd. 2.

Pursuant to Minnesota Statutes, Section 505.021, Subd. 9, taxes payable in the year 20__ on the land hereinbefore described have been paid. Also, pursuant to Minnesota Statutes, Section 272.12, there are no delinquent taxes and transfer entered this ____ day of _____, 20__.

I hereby certify that this plat of INDEPENDENT SCHOOL DISTRICT 16 SECOND ADDITION was filed in the office of the County Recorder/Registrar of Titles for public record on this _____ day of _____, 20____, at _____ o'clock ____ .M. and was duly recorded in

By _____, Deputy

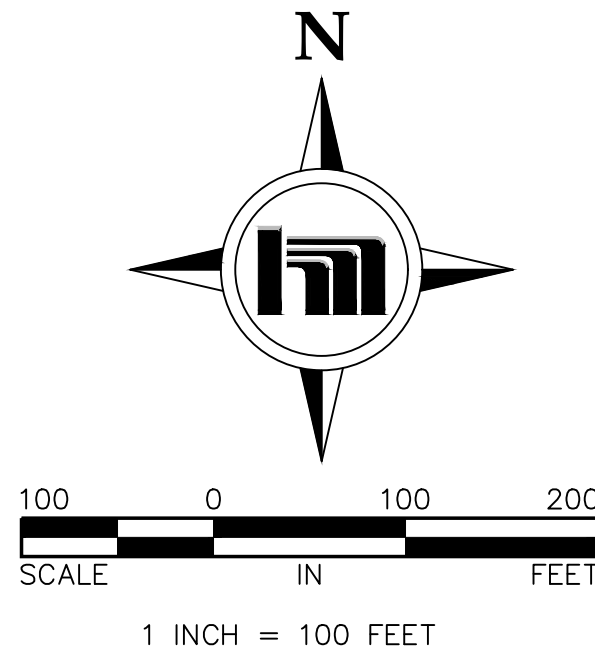
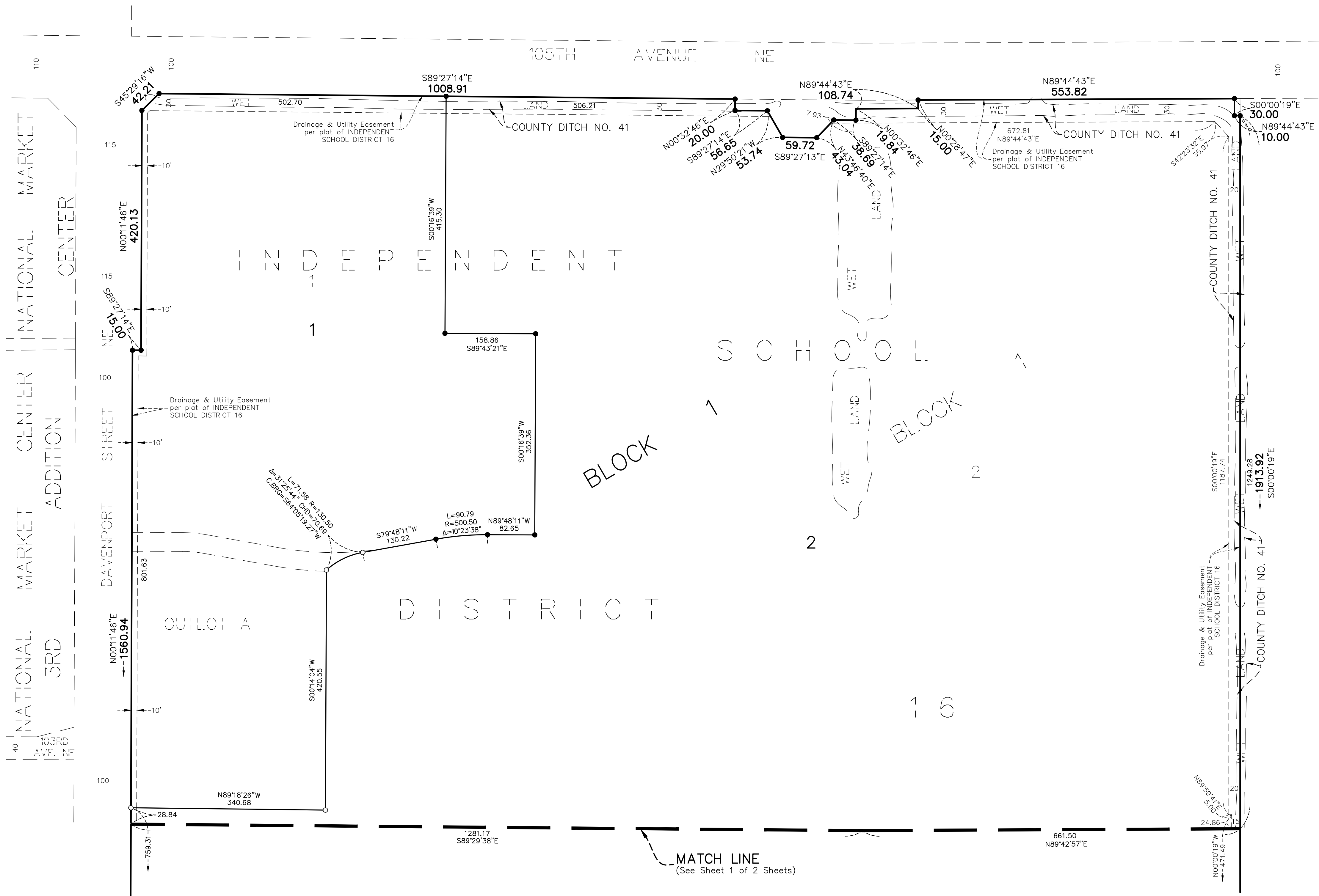


For the purposes of this plat the most Southerly Line of Lot 2, Block 1, INDEPENDENT SCHOOL DISTRICT 16 is assumed to bear N89°32'01"W.

- Denotes 1/2 inch by 14 inch iron monument set and marked with Minnesota License No. 49138.
- Denotes 1/2 inch by 14 inch iron monument found and marked with Minnesota License No. 18420

INDEPENDENT SCHOOL DISTRICT 16 SECOND ADDITION

CITY OF BLAINE
COUNTY OF ANOKA
SEC. 20 & 21, T. 31, R. 23



For the purposes of this plat the most Southerly Line of Lot 2, Block 1, INDEPENDENT SCHOOL DISTRICT 16 is assumed to bear N89°32'01"W.

- Denotes 1/2 inch by 14 inch iron monument set and marked with Minnesota License No. 49138.
- Denotes 1/2 inch by 14 inch iron monument found and marked with Minnesota License No. 18420