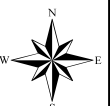


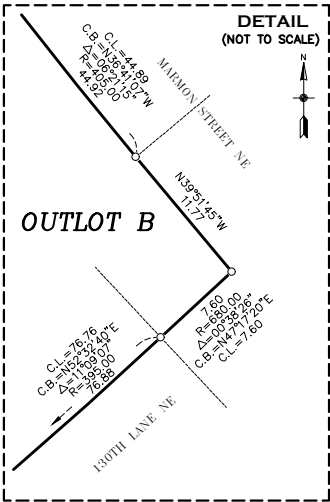
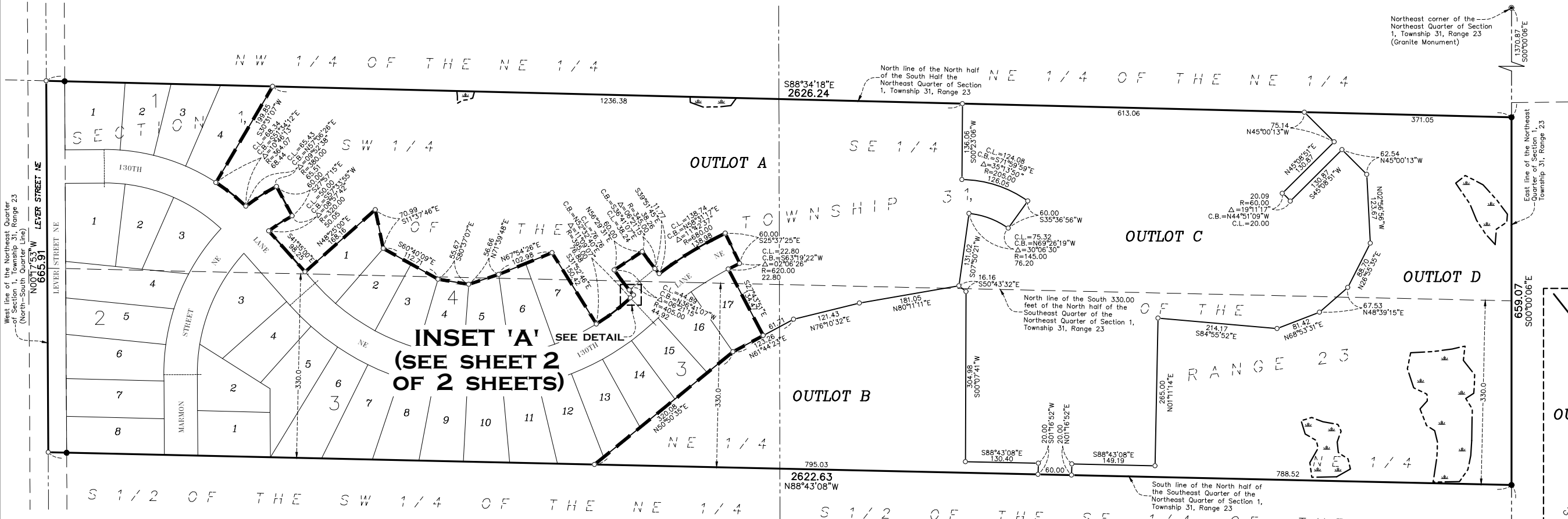
Case File No. 18-0012
Mill Pond

Blaine Planning Department / 10801 Town Square Dr NE / Blaine, MN 55449 / (763) 785-6180



MILL POND

CITY OF BLAINE
COUNTY OF ANOKA
SEC. 1, TWP. 31, RGE. 23



KNOW ALL PERSONS BY THESE PRESENTS: That TEGL/AREP Mill Pond, LP, a Minnesota limited partnership, owner of the following described property:

That part of the North Half of the South Half of the Northeast Quarter of Section 1, Township 31, Range 23, Anoka County, Minnesota lying North of the South 330 feet thereof.

And

The South 330 feet of the North Half of the Southeast Quarter of the Northeast Quarter and the South 330 feet of the North Half of the Southwest Quarter of the Northeast Quarter of Section 1, Township 31, Range 23, Anoka County, Minnesota.

Has caused the same to be surveyed and platted as MILL POND and does hereby dedicate to the public for public use the public ways and drainage and utility easements as shown on this plat.

In witness whereof said TEGL/AREP Mill Pond, LP, a Minnesota limited partnership, has caused these presents to be signed by its proper officer this ____ day of _____, 20____.

TEGL/AREP Mill Pond, LP
by: TEGL/AREP Land GP LLC, General Partner,

Benjamin Schmidt, Executive Vice President

STATE OF _____
COUNTY OF _____

This instrument was acknowledged before me on _____ by Benjamin Schmidt, Executive Vice President of TEG/AREP Land GP, LLC, a Delaware limited liability company, General Partner of TEGL/AREP Mill Pond, LP, a Minnesota limited partnership, on behalf of the partnership.

(Signed)

(Printed)
Notary Public, _____
My commission expires _____

I Thomas R. Balluff do hereby certify that this plat was prepared by me or under my direct supervision; that I am a duly Licensed Land Surveyor in the State of Minnesota; that this plat is a correct representation of the boundary survey; that all mathematical data and labels are correctly designated on this plat; that all monuments depicted on this plat have been, or will be correctly set within one year; that all water boundaries and wet lands, as defined in Minnesota Statutes, Section 505.01, Subd. 3, as of the date of this certificate are shown and labeled on this plat; and all public ways are shown and labeled on this plat.

Dated this ____ day of _____, 20____.

Thomas R. Balluff, Licensed Land Surveyor
Minnesota License No. 40361

STATE OF _____
COUNTY OF _____

This instrument was acknowledged before me on _____ by Thomas R. Balluff.

(Signed)

(Printed)
Notary Public, _____
My commission expires _____

CITY COUNCIL, CITY OF BLAINE, MINNESOTA

This plat of MILL POND was approved and accepted by the City Council of the City of Blaine, Minnesota at a regular meeting thereof held this ____ day of _____, 20____, and said plat is in compliance with the provisions of Minnesota Statutes, Section 505.03, Subd. 2.

CITY COUNCIL, CITY OF BLAINE, MINNESOTA

By: _____, Mayor By: _____, Clerk

COUNTY SURVEYOR

I hereby certify that in accordance with Minnesota Statutes, Section 505.021, Subd. 11, this plat has been reviewed and approved this ____ day of _____, 20____.

By: _____
Charles F. Gitzen
Anoka County Surveyor

COUNTY AUDITOR/TREASURER

Pursuant to Minnesota Statutes, Section 505.021, Subd. 9, taxes payable in the year 20____ on the land hereinbefore described have been paid. Also, pursuant to Minnesota Statutes, Section 272.12, there are no delinquent taxes and transfer entered this ____ day of _____, 20____.

Property Tax Administrator

By: _____, Deputy

COUNTY RECORDER/REGISTRAR OF TITLES

County of Anoka, State of Minnesota

I hereby certify that this plat of MILL POND was filed in the office of the County Recorder/Registrar of Titles for public record on this ____ day of _____, 20____, at ____ o'clock ____M. and was duly recorded as Document Number _____.

County Recorder/Registrar of Titles

By: _____, Deputy

For the purposes of this plat, the East line of the Northeast Quarter of Section 1, Township 31, Range 23 is assumed to have a bearing of South 00 degrees 00 minutes 06 seconds East.

- Denotes 5/8 inch by 14 inch Rebar, set or to be set within one year of recording of this plat and marked with license number 40361
- Denotes Found 1/2 Inch Iron Monument, marked with license number 12251
- ⊙ Denotes Found Anoka County Section Monument, as noted



MILL POND

INSET 'A'

