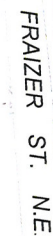


**Case File No. 18-0054**  
**Rainbow Child Care**

Blaine Planning Department / 10801 Town Square Dr NE / Blaine, MN 55449 / (763) 785-6180



PRELIMINARY--NOT FOR CONSTRUCTION



QUEST  
**EIGHT**  
1742 Crooks Road  
Troy, Michigan 48064  
Attn: Samantha Coponen  
(248) 510-9274

SEAL

Druck  
Quadrat Millimeter

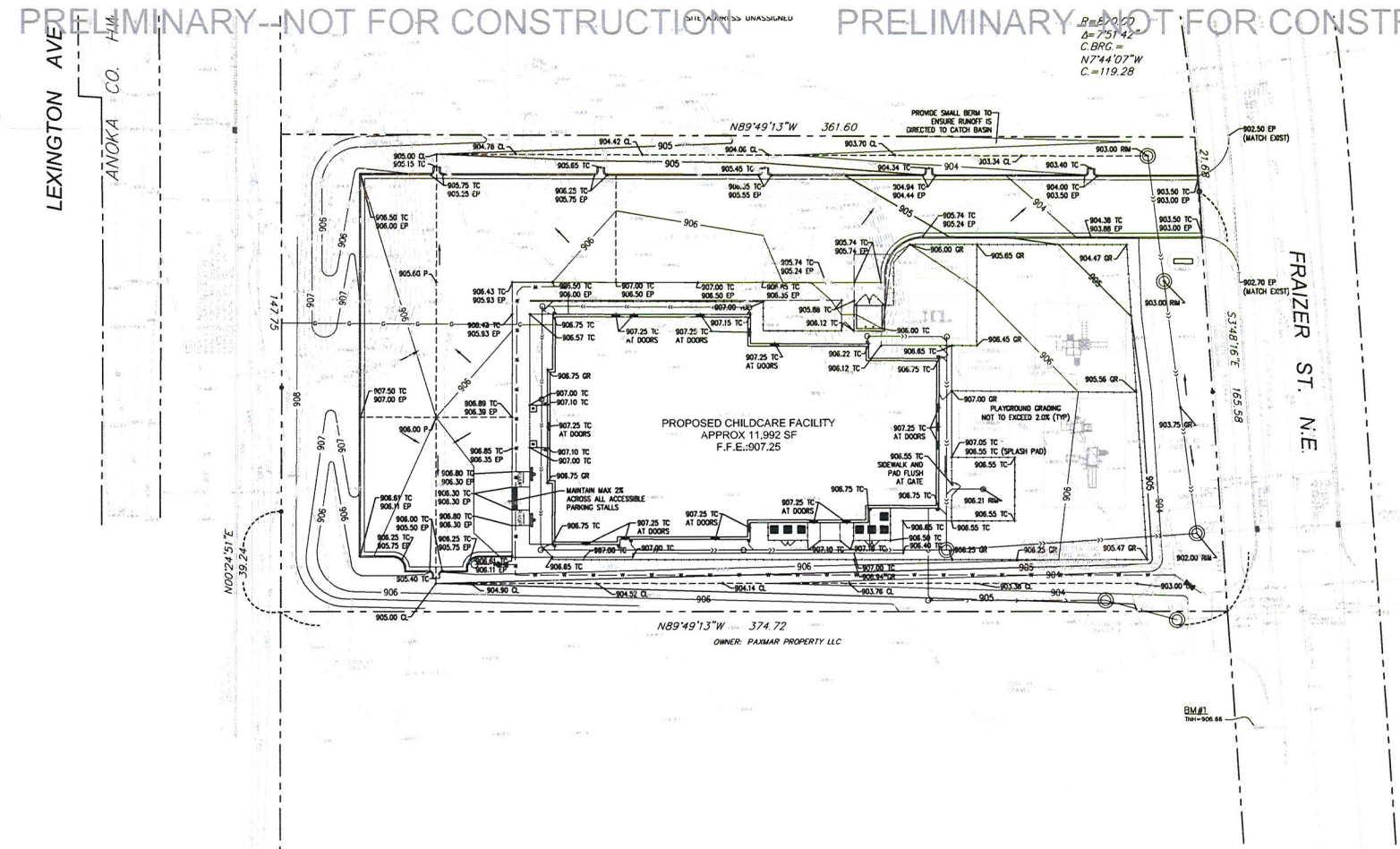


© 2010 Lippincott Williams & Wilkins Inc. All rights reserved.

## C2.0



PRELIMINARY--NOT FOR CONSTRUCTION PRELIMINARY--NOT FOR CONSTRUCTION



**GRADING PLAN**  
NORTH SCALE: 1"=20'

**LEGEND**

- CONCRETE ELEVATION
- ASPHALT PAVEMENT ELEVATION
- GROUND (GRASS/LANDSCAPING/ETC...) ELEVATION
- TOP CURB CONCRETE
- EDGE PAVEMENT
- SWALE CENTERLINE

**STORMWATER NOTES**

- TOTAL DISTURBED AREA: 1.58 ACRES

- AREAS (EXISTING):  
IMPERVIOUS: 0 SF (0 ACRES) (0%)  
PERVIOUS: 69,820 SF (1.58 ACRES)

- AREAS (PROPOSED):  
IMPERVIOUS: 36,734 SF (0.843 ACRES) (53%)  
PERVIOUS: 32,091 SF (0.737 ACRES)

**STORMWATER FLOW (EXISTING):**  
2-YEAR: 3.12 CFS  
10-YEAR: 6.15 CFS  
100-YEAR: 13.13 CFS

**STORMWATER FLOW (PROPOSED):**  
2-YEAR: 3.90 CFS  
10-YEAR: 6.40 CFS  
100-YEAR: 12.26 CFS

\*NOTE: FLOW REDUCTION BEING PROVIDED BY OFF-SITE TREATMENT FACILITY

**TSS REDUCTIONS:**  
TSS REDUCTION PROVIDED BY OFF-SITE TREATMENT FACILITY

PRELIMINARY--NOT FOR CONSTRUCTION PRELIMINARY--NOT FOR CONSTRUCTION

**Larson Engineering, Inc.**  
2001 E. Enterprise Ave., Suite 200  
Appleton, WI 54912-7889  
Tel: 920.734.8600  
www.larsoneng.com

**EIGHT**  
1742 Crooke Road  
Troy, Michigan 48064  
Attn: Samantha Coponen  
(248) 518-9274

**RAINBOW CHILD CARE**  
FRAZER STREET N.E.  
BLAINE, MINNESOTA 55434

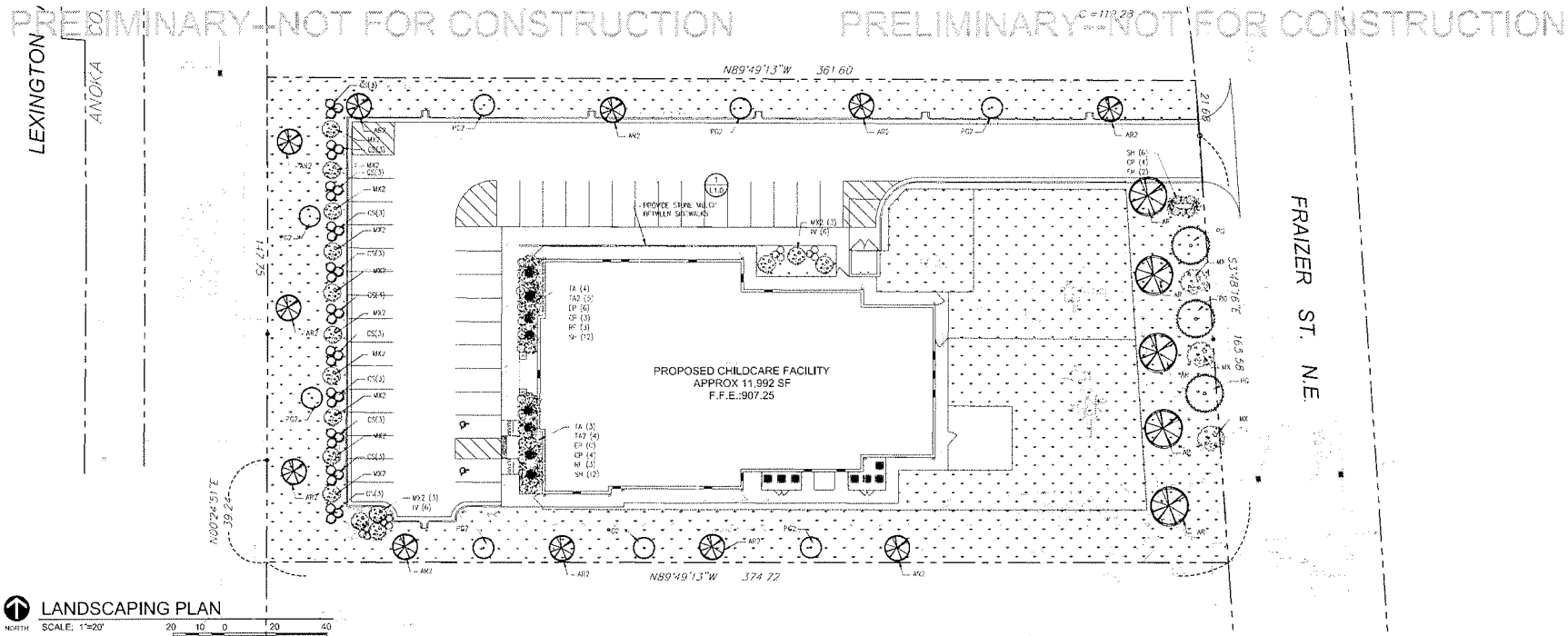
  
RAINBOW CHILD CARE CENTER

811  
Know what's below.  
Call before you dig.

**C3.0**

PRELIMINARY - NOT FOR CONSTRUCTION

PRELIMINARY - NOT FOR CONSTRUCTION



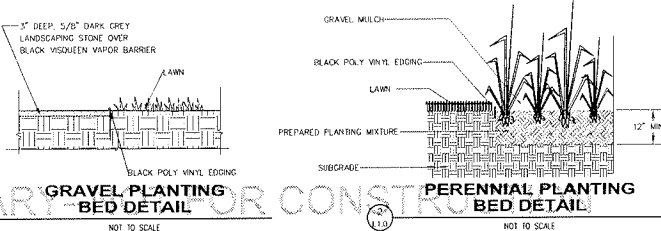
**LANDSCAPING PLAN**  
SCALE: 1"=20'

**SYMBOL LEGEND**

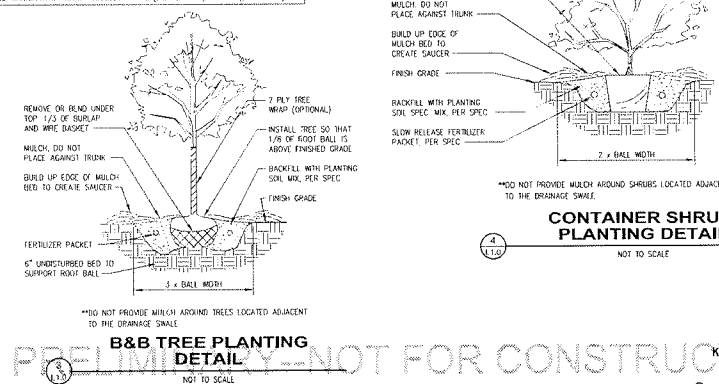
- TOPSOIL, SEED, MULCH
- 
- AR - ACER RUBRUM (LARGE)
- AR2 - ACER RUBRUM (REGULAR)
- PG - PICEA GLAUCA (LARGE)
- PG2 - PICEA GLAUCA (REGULAR)
- MK - MALUS X CIDERELLA (LARGE)
- MK2 - MALUS X CIDERELLA (REGULAR)
- CS - CORNUS SERICEA
- BV - BUX VERTICILLATA (LARGE)
- TA - TAXUS X MEDIA (LARGE)
- TA2 - TAXUS X MEDIA (REGULAR)
- CP - CORDYLINE PALMATA
- EP - ECHINEACEA PURPUREA
- RI - RUBUS IDAEUS

QTY	SYMBOL	BOTANICAL NAME	COMMON NAME	MINIMUM SIZE	ROOT	REMARKS
5	AR	ACER RUBRUM	RED MAPLE	3" CALIPER	2 A B	OVERSTORY TREE
11	AR2	ACER RUBRUM	RED MAPLE	2.5" CALIPER	2 A B	OVERSTORY TREE
7	PG	PICEA GLAUCA (LARGE)	BLACK HOLEY SPRUCE	4" TALL	2 A B	OVERSTORY TREE
5	PG2	PICEA GLAUCA (REGULAR)	BLACK HOLEY SPRUCE	4" TALL	2 A B	OVERSTORY TREE
3	MK	MALUS X CIDERELLA (LARGE)	CIDERELLA (LARGE)	2.5" CALIPER	10 CAL	OVERSTORY TREE
36	MK2	MALUS X CIDERELLA (REGULAR)	CIDERELLA (REGULAR)	2.5" CALIPER	10 CAL	OVERSTORY TREE
33	CS	CORNUS SERICEA	RED TWIG DOGWOOD	N/A	24" POT	SHRUB
12	BV	BUX VERTICILLATA (LARGE)	BOX BERRY WINTERBERRY	N/A	24" POT	SHRUB
7	TA	TAXUS X MEDIA (LARGE)	DOUGLASS PINE	N/A	24" POT	SHRUB
4	TA2	TAXUS X MEDIA (REGULAR)	DOUGLASS PINE	N/A	24" POT	SHRUB
11	CP	CORDYLINE PALMATA	SPIDER PLANT	N/A	4" POT	ANNUAL/PERENNIAL
11	EP	ECHINEACEA PURPUREA	WITCHES PURPLE	N/A	4" POT	ANNUAL/PERENNIAL
6	RI	RUBUS IDAEUS	BLACK RASPBERRY	N/A	4" POT	ANNUAL/PERENNIAL

\*\*NOTE: SPECIFIC PLANTINGS MAY BE SUBSTITUTED AS AVAILABLE IN QUANTITIES. HOWEVER, SPECIES, SIZE AND QUANTITIES SHOWN MUST BE MAINTAINED.  
ANY SUBSTITUTION REQUIRED MUST BE APPROVED BY THE OWNER.



TOTAL AREA OF NEW BUILDING	11,992 SF
101 PERIMETER	1111 LF
TOTAL REQUIRED NEW OVERSTORY TREES	5 (3" CALIPER) AND 11 (2.5" CALIPER)
TOTAL OVERSTORY TREES PROVIDED	2 (3" CALIPER) AND 11 (2.5" CALIPER)
TOTAL REQUIRED NEW CORNUS SERICEA TREES	3 (6" TALL) AND 6 (4" TALL)
TOTAL CORNUS SERICEA TREES PROVIDED	3 (6" TALL) AND 6 (4" TALL)
TOTAL REQUIRED NEW SHRUBS	60
TOTAL SHRUBS PROVIDED	60
TOTAL REQUIRED NEW ORNAMENTAL TREES	3 (2.5" CALIPER) AND 6 (1" CALIPER)
TOTAL ORNAMENTAL TREES PROVIDED	3 (2.5" CALIPER) AND 6 (1" CALIPER)

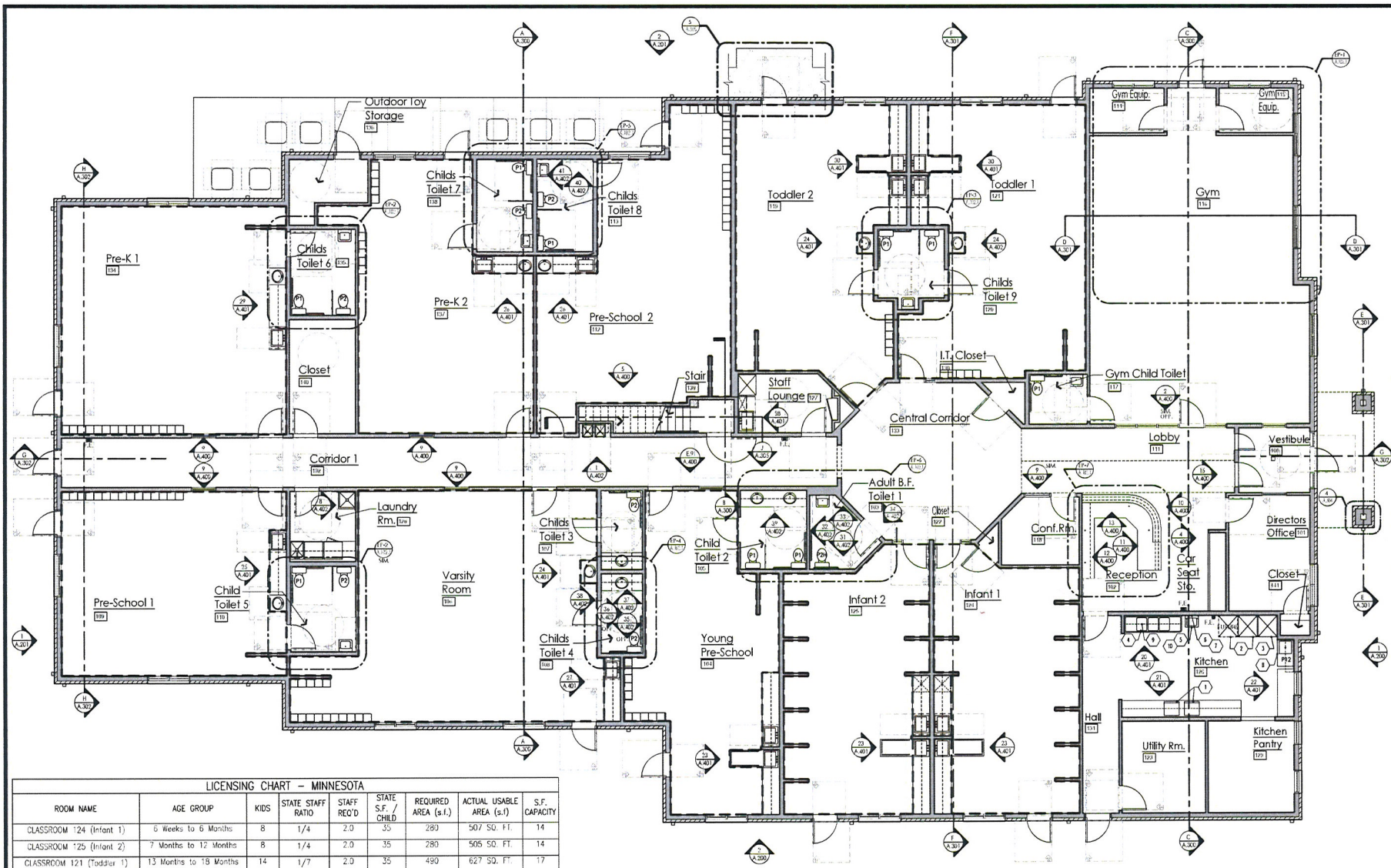


**Larson Engineering, Inc.**  
1742 Crooks Road  
Troy, Michigan 48064  
Attn: Samantha Coponen  
(248) 519-9274

**RAINBOW CHILD CARE**  
1742 CROOKS ROAD  
TROY, MICHIGAN 48064  
BLAINE, MINNESOTA 55434

**811**  
Know what's below. Call before you dig.  
L1.0





LICENSING CHART - MINNESOTA

ROOM NAME	AGE GROUP	KIDS	STATE STAFF RATIO	STAFF REQ'D	STATE S.F. / CHILD	REQUIRED AREA (s.f.)	ACTUAL USABLE AREA (s.f.)	S.F. CAPACITY
CLASSROOM 124 (Infant 1)	6 Weeks to 6 Months	8	1/4	2.0	35	289	507 SQ. FT.	14
CLASSROOM 125 (Infant 2)	7 Months to 12 Months	8	1/4	2.0	35	280	505 SQ. FT.	14
CLASSROOM 121 (Toddler 1)	13 Months to 18 Months	14	1/7	2.0	35	490	627 SQ. FT.	17
CLASSROOM 119 (Toddler 2)	18 Months to 24 Months	14	1/7	2.0	35	490	601 SQ. FT.	17
CLASSROOM 104 (Young PS)	25 Months to 35 Months	14	1/7	2.0	35	490	534 SQ. FT.	15
CLASSROOM 109 (PreSchool 1)	3 Years old	17	1/10	2.0	35	595	595 SQ. FT.	17
CLASSROOM 112 (PreSchool 2)	3 Years old	18	1/10	2.0	35	630	664 SQ. FT.	18
CLASSROOM 137 (Pre-K2)	4 Years old	17	1/10	2.0	35	595	614 SQ. FT.	17
CLASSROOM 134 (Pre-K1)	4 Years old	20	1/10	2.0	35	700	764 SQ. FT.	21
CLASSROOM 106 (Varsity PS)	5 Years & over	25	1/15	2.0	35	875	891 SQ. FT.	25
TOTALS		155		20.0		5425	6302 SQ. FT.	175

KITCHEN EQUIPMENT SCHEDULE				NOTES
EQ. NO.	QUANTITY	DESCRIPTION	MFR./MODEL	
1	4	MICROWAVE OVENS	MARCA RESTO/DUSE	
2	2	REFRIGERATOR	TURBO AIR V3024-1	PROVIDE OPTIONAL 6" ST. STEEL LEGS
3	1	FREEZER	TURBO AIR V3024-1	PROVIDE OPTIONAL 6" ST. STEEL LEGS
4	1	3 COMP. SINK	ELKAY L3CTBX20-2-1HX	
5	1	HAND SINK	UNIVERSAL EHS-1 TYPE 304 SS	
6	1	SOAP DISPENSER	LZ HAND NO TOUCH	
7	1	PAPER TOWEL DISPENSER	SAN JAMAR 1700 SERIES	
8	1	PREP SINK	ELKAY S1C18X10-BH-16K	
9	1	WINE SHELVING	14"(D) X 7'-0"(L)	ABOVE 3-COMP. SINK
10	1	WINE SHELVING	14"(D) X 2'-0"(L)	ABOVE HANDSINK SINK

FIRST FLOOR KEY PLAN 3/16"=1'-0"



LOUISE CRAVER  
ARCHITECT

604 COURTLAND STREET  
SUITE 100  
ORLANDO, FLORIDA 32804  
PH 407.845.5008  
FX 407.825.9124

SEAL

THIS DOCUMENT IS NOT  
FOR REGULATORY  
APPROVAL, PERMITTING,  
OR CONSTRUCTION.

OWNER: RAINBOW CHILD CARE CENTER  
DESIGNED BY: LOUISE CRAVER ARCHITECT  
DATE: 06-27-18

PROJECT NAME:  
DATE:  
SCALE: 3/16"=1'-0"

NO. DATE: 06/27/18



RAINBOW CHILD  
CARE CENTER

C-PROTOTYPE  
LEXINGTON AVE. NE & FRASER ST.  
BURNS, MN 55014

PROJECT NO: 2018.0200  
DATE: 06-27-18

A.102  
FIRST FLOOR KEY PLAN

CHECKED: RC DRAWN: JC



Exterior Elevation Materials					
SYMBOL	ITEM	MANUFACTURER	MODEL	COLOR / FINISH	NOTES
M-1	BRICK	BRAMPTON BRICK	CROSSROADS SERIES	COLOR: JASPER	IF BRICK IS NOT READY AVAILABLE PROVIDE OPTIONS FOR OWNER TO APPROVE
M-2	ASPHALT SHINGLES	CAR ROOFING	TIMBERLINE HD - LIFETIME SHINGLES	COLOR: WEATHERED WOOD	
M-3	BREAK METAL TRIM	QUARRY EDGE	TRIMLINE EMBOSSED TRIM COIL	COLOR: BIST CLAY	
M-4	VINYL SIDING	CERTAINTEED CORPORATION	DOCKBULE 5" CLAMPBOARD	MSJ	
M-5	STONE VENEER	ROYAL CLAUDED STONE	COUNTRY LEDGESTONE	BUDS COUNTY	IF STONE IS NOT READY AVAILABLE PROVIDE OPTIONS FOR OWNER TO APPROVE
M-6	PVE FIN ALUMINUM GUTTER	MASTIC HOME EXTERIORS	2" GUTTER COIL - 37 GAUGE	COLOR: PEBBLESTONE CLAY (VERY W/CHAINED)	
M-7	SLIS	T.B.D.	LINESTONE	VARIEGATED	
M-8	CEDAR TRIM BOARD		CIDAR	NATURAL & SEALED	
M-9	SPURFACE C.M.U.	MICHIGAN CERTIFIED CONCRETE	SPLIT FACED	VAOLS	IF BLOCK IS NOT READY AVAILABLE PROVIDE OPTIONS FOR OWNER TO APPROVE

NOTE:  
 1. ALL WINDOWS TO BE PRE-FINISHED W/DESERT SAND



# RAINBOW CHILD CARE C-PROTO RENDERING



THE COLORS SHOWN IN THIS RENDERING ARE CLOSE APPROXIMATIONS. DUE TO INK VARIATIONS AND DIFFERENCES IN PRINTERS, AN EXACT COLOR MATCH CANNOT BE ACHIEVED. THE VIEWER IS ADVISED TO USE THE RENDERING AS A GUIDE LINE FOR THE ARRANGEMENT OF COLORS ON THE BUILDING, AND TO THEN REFER TO THE ACTUAL COLOR OR MATERIAL SAMPLES PROVIDED.

**INTERPLAN**  
 ARCHITECTURE • ENGINEERING • PROJECT MANAGEMENT • INTERIOR DESIGN

INTERPLAN NO. 2017.0505  
 1-8-18



Exterior Elevation Materials					
SYMBOL	ITEM	MANUFACTURER	MODEL	COLOR / FINISH	NOTES
M-1	BRICK	BRAMPTON BRICK	CROSSROADS SERIES	COLOR: JADEP	IF BRICK IS NOT READY AVAILABLE PROVIDE OPTIONS FOR OWNER TO APPROVE
M-2	ASPHALT SHINGLES	GAF ROOFING	TIMBERLINE HD - LIFETIME SHINGLES	COLOR: WEATHERED WOOD	
M-3	BREAK METAL TRIM	QUALITY EDGE	TRUSLINE EMBOSSED TRIM COIL	COLOR: R07 (CLAY)	
M-4	VINYL SIDING	CERTIFIED CORPORATION	DOUBLE D' CLAPBOARD	W61	
M-5	STONE VENEER	SORAL CULTURED STONE	COUNTRY LEDGESTONE	RUCKS COUNTRY	IF STONE IS NOT READY AVAILABLE PROVIDE OPTIONS FOR OWNER TO APPROVE
M-6	PRE-FIN ALUMINUM GUTTER	MASTIC HOME EXTERIORS	4" GUTTER COIL - 27 GAUGE	COLOR: PEBBLESTONE CLAY (HERRY WOODNER)	
M-7	SLIS	T.B.D.	LIVESTONE	VAIRECATED	
M-8	CEDAR TRIM BOARD		CEDAR	NATURAL & SEALED	
M-9	SPURFACE C.M.U.	MICHIGAN CERTIFIED CONCRETE	SPUR FACED	VAOLS	IF BLOCK IS NOT READY AVAILABLE PROVIDE OPTIONS FOR OWNER TO APPROVE

NOTE:  
JEETS WITH WINDOWS TO BE PRE-FINISHED W/DESERT SAND



SOUTH ELEVATION



WEST ELEVATION

# RAINBOW CHILD CARE

C-PROTO RENDERING



THE COLORS SHOWN IN THIS RENDERING ARE CLOSE APPROXIMATIONS. DUE TO INK VARIATIONS AND DIFFERENCES IN PRINTERS, AN EXACT COLOR MATCH CANNOT BE ACHIEVED. THE VIEWER IS ADVISED TO USE THE RENDERING AS A GUIDELINE FOR THE ARRANGEMENT OF COLORS ON THE BUILDING, AND TO THEN REFER TO THE ACTUAL COLOR OR MATERIAL SAMPLES PROVIDED.

## RAINBOW CHILD CARE DESCRIPTION OF OPERATION

Rainbow Child Care Centers serve children from six weeks to six years old. Rainbow provides early education and child care services for infants, toddlers, young preschool, preschool, Pre-K, and Kindergarten age children. Before and After School programs for school age children, as well as Summer Camps.

Our school facilities typically consist of 10,000-13,000 square feet of commercial building space specifically designed to meet our strict performance standards and ensure a safe and happy learning atmosphere for all ages. We utilize equipment based on its proven suitability for the age of the children in each classroom.

Rainbow Child Care Center intends to operate with 15 full time employees as the Day Care Center grows to its anticipated capacity of 115 students.

Highlights of our school facilities include:

### **Classrooms**

Each is designed specifically for our young learners. State-of-the-art equipment, child-sized furniture and developmentally appropriate toys and activities are provided. Classroom computers and early learning software provides great exposure to technology.

### **Gymnasium**

Many of our facilities have an indoor gym with a wood-type flooring surface and padding on the walls. Modern movement and sports equipment ensure that daily trips to the fully equipped gym are safe and fun.

### **Safety-Certified Outdoor Playground**

Each of our facilities has safety-certified playgrounds that allow separate space for Infants/Toddlers, Young Preschool, Preschool and Pre-Kindergarten classes. All playing areas have exceptional playground equipment and AstroTurf or grass playing fields that can accommodate tennis, soccer, t-ball, basketball or a putting green. All areas are completely enclosed by fencing with several exit gates.

### **Operation**

Rainbow requires parents to walk and sign their children through our secure entrance and into the building. We do not allow curb side drop off. Deliveries are conducted with small cargo vans and single rear axle trucks. No Loading zone is required. Our hours of operation are 6:30am – 6:30pm Monday through Friday.