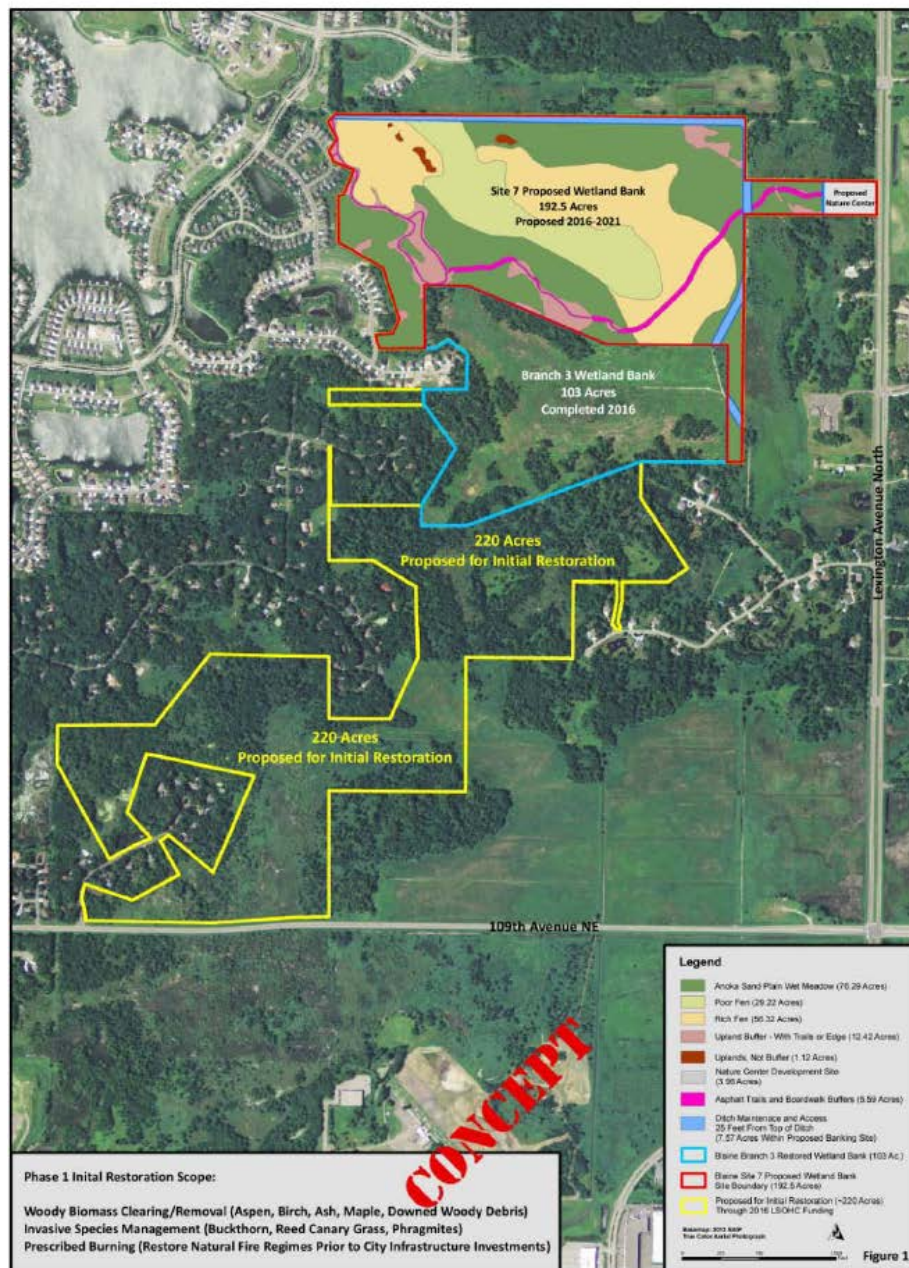


Blaine Wetland Sanctuary

May 10, 2018

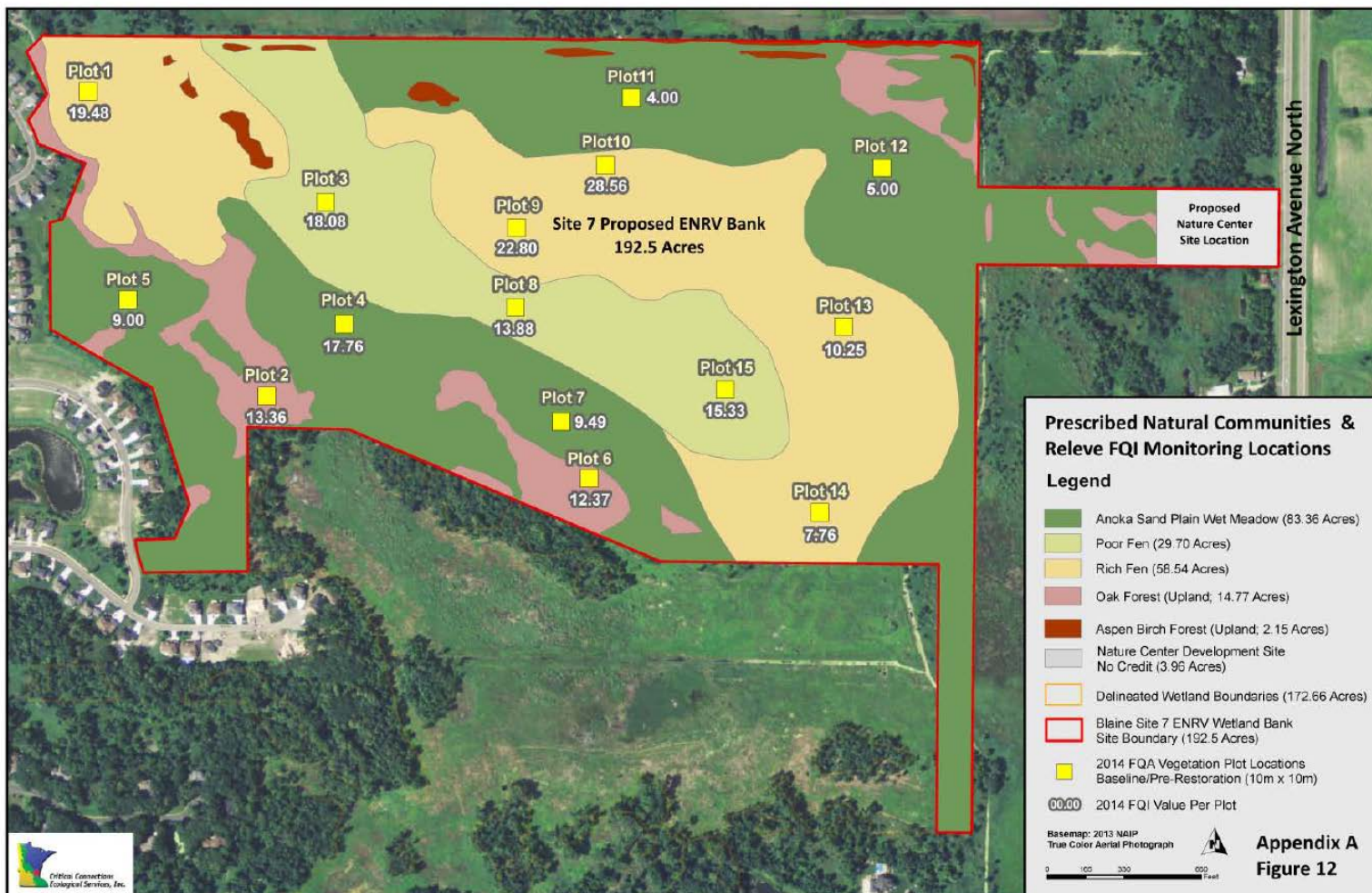


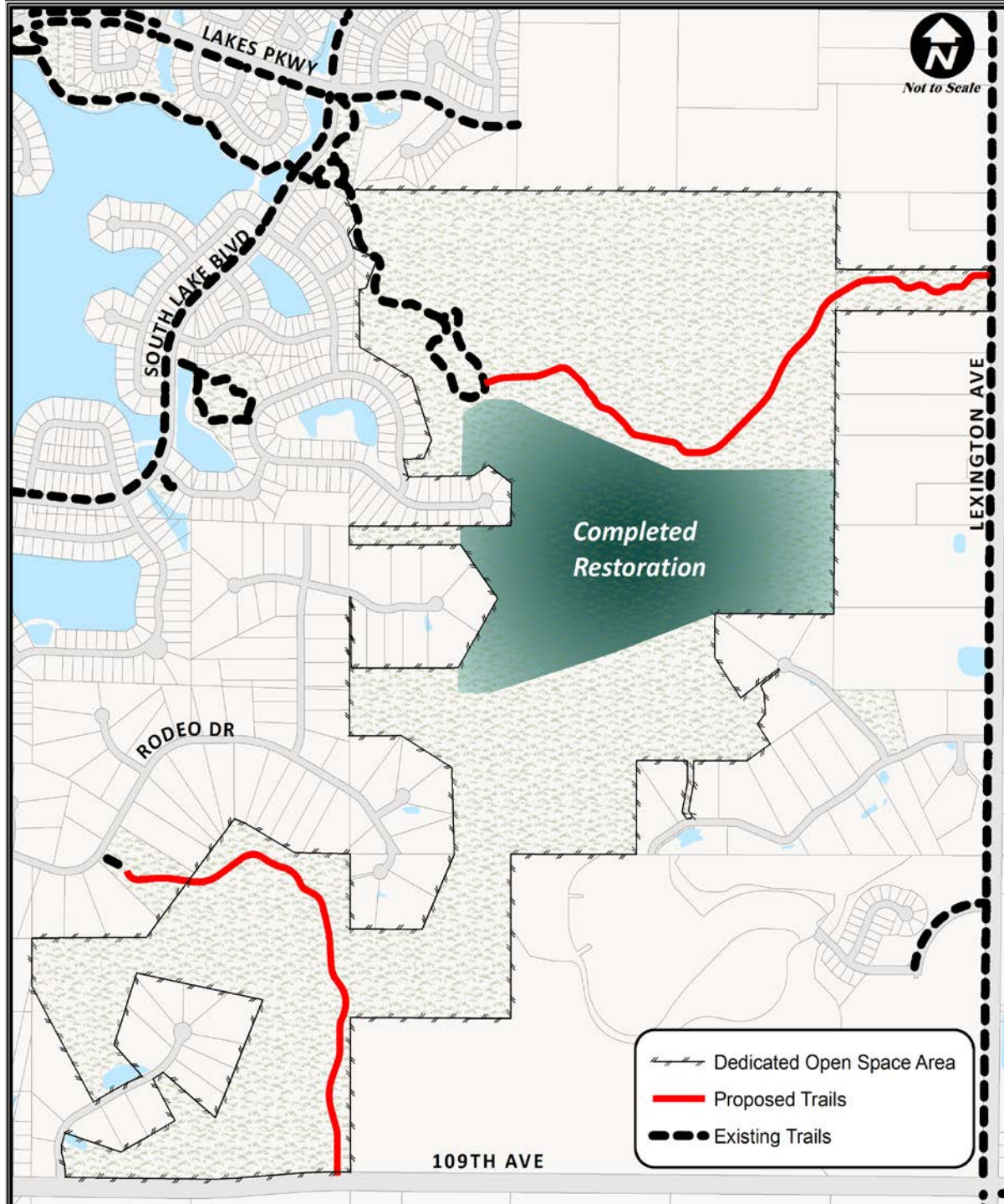
City of Blaine
Wetland Sanctuary (South 220 Acres)
2016 Anoka Sandplain Partnership
Proposal to LSOHC for Initial Restoration Funding

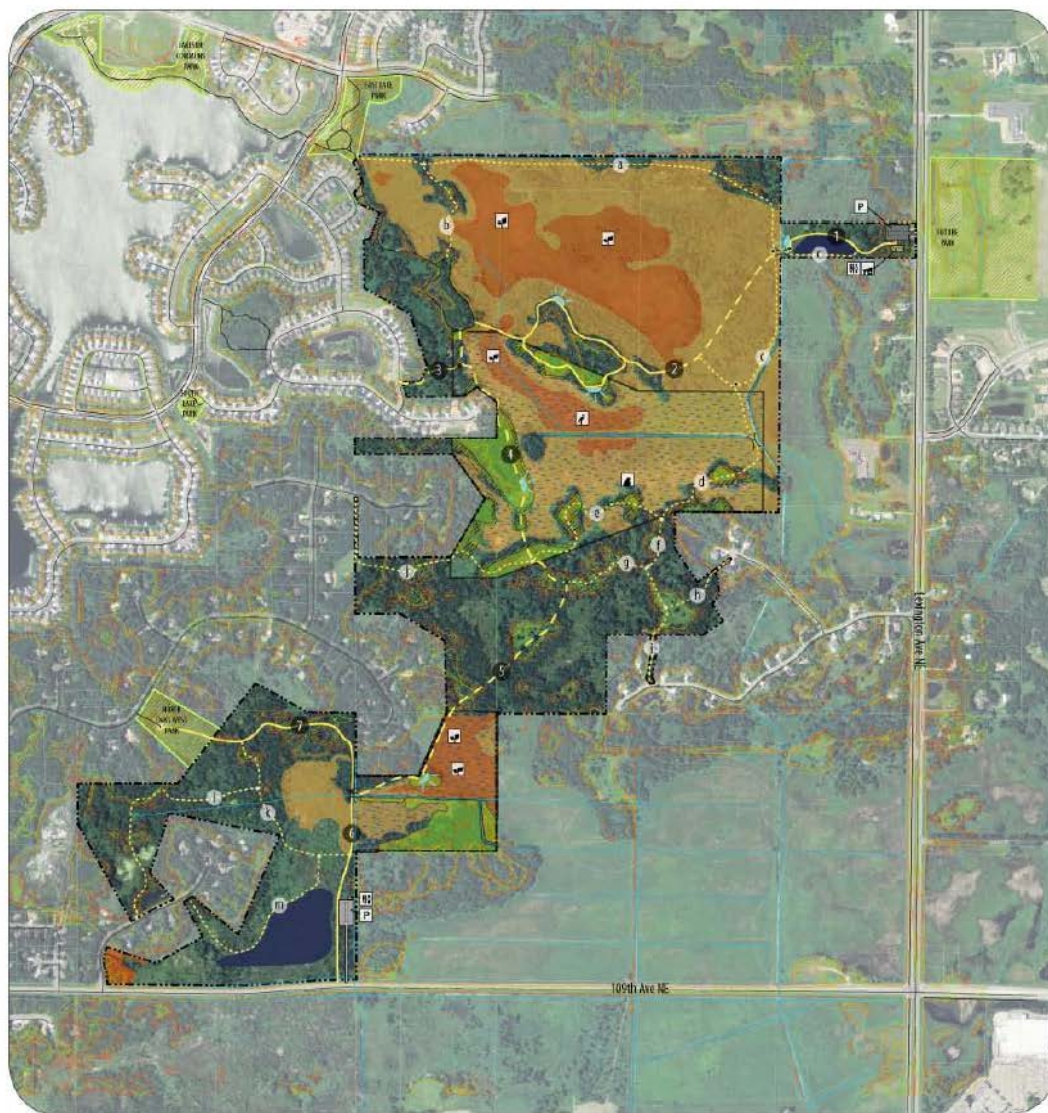
Concept Figure
Jason Husveth, CCES Inc.
May 18, 2015

2004 Aerial Photo









The Blaine Wetland Sanctuary

OPEN SPACE

MASTER PLAN



RESOURCES

LEGEND

- Existing Trails
- Parcels
- Existing City Park
- Site 7 Boundary
- Potential Open Water Habitat
- Intrepretive Center
- Public Restrooms
- P Parking Lot/Driveway
- Hard Surface Trail
- Soft Surface Trail (with hard surface alternative)
- Soft Surface Trail
- Ditch
- Wildlife Viewing
- Bridge/Culvert Crossing
- Rare Plant Area
- Crane Nesting Area
- Hawk Nesting Area
- 898 Contour
- 899 Contour (assumed wetland boundary)
- 900 Contour
- Delineated Wetland
- Delineated Wetland Upland Transition
- Delineated Upland
- Avoid Impacts Area
- Minimize Impacts Area





Restoration work began in January 2017.

Several meetings with the neighborhood have been held since the January 19, 2017 City Council meeting

February 2018 staff was informed that making any modifications to the plan would require the City to go back through the process. City was strongly discouraged from changing anything in the plan

Restoration activities resumed mid March 2018

Remaining trees scheduled to be removed winter 2018-2019

Restoration Needed Areas

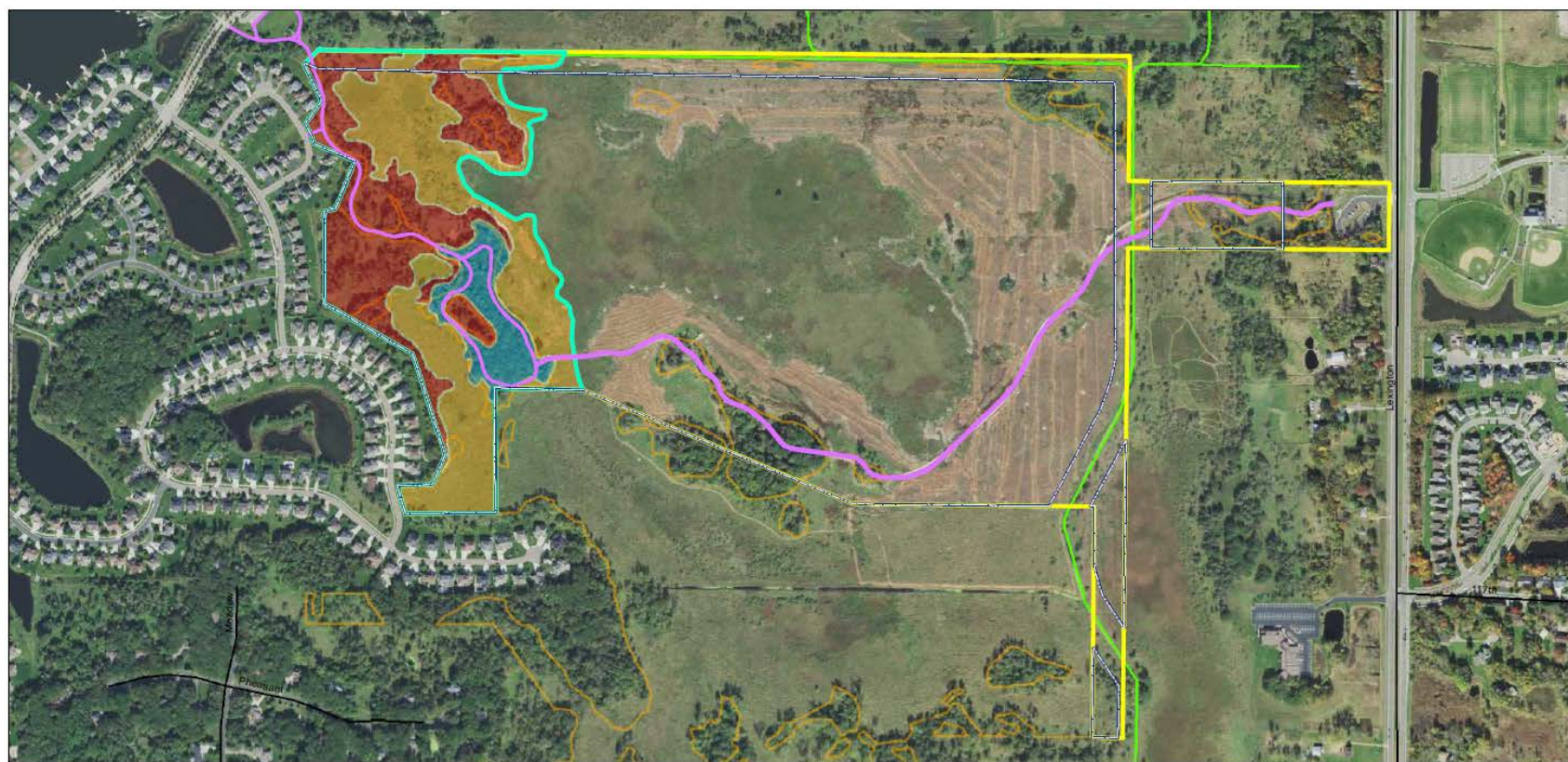


Figure 1

2018 Required Restoration Implementation Activities
Tree & Shrub Removal, Mowing, Herbiciding
Dethatching and Debris Consolidation
City of Blaine Site 7 Wetland Mitigation Bank

*Please note that areas are closely approximated,
final boundary decisions will be made in
the field prior to and during implementation
and based on surveyor locations, when necessary.*

**Restoration Needed Area: Existing Cover and
2018 Proposed Implementation Activities**

- Wetland Grasses, Sedges, Shrubs
Winter Mow, Winter Rake, Herbicide; 19.86 Acres
- Wetland Trees, Shrubs, Grasses
Remove Trees, Winter Mow,
Winter Rake, Herbicide; 16.89 Acres
- Upland Oak Forest, Trees, and Shrubs
Buckthorn Removal, Herbicide; 4.95 Acres

- Site 7 Property Boundary
- Site 7 Wetland Mitigation Bank
Easement Boundary
- Restoration Needed Area
- ACD-53-62 Ditch Centerline
- Existing Trail System

March 6, 2018



Critical Connections
Ecological Services, Inc.

0 500 1,000
Feet

MnGeo WMS Services - 2017 Color FSA Aerial Photograph

Costs

First Bank

- Branch 3
 - Spent \$600,000 (EDA)
 - 55 acres of credits
 - Sold \$2.35 million
 - ~27 remaining credits

Second Bank

- Site 7
 - Will spend \$1.4 million
 - Up to 81 acres of credits
 - Worth ~\$7 million

Fence and Gate

- 4' High Ornamental Fence & Slide gate – Commercial Montage
 - \$12,950.00 (subject to site verification)



Programming



Partnerships

- ARCC
- ACD
- BWSR
- Boy and Girl Scout Troops
- Church groups
- DNR
- Growing Green Hearts
- RCWD
- SCSU
- Spring Lake Park School District
- U of M
- Wargo Nature Center

Lessons Learned

- Communication could have been more specific to neighborhoods
- Give more frequent updates to adjacent residents
- Once approvals given, regulating agencies expect what plan says

Next Steps

- Multi-year project – permits require 5 years monitoring
- Herbicide treatments Spring/Summer
- Remaining trees removed in Winter
- Prescribed Burns in Spring/Winter (weather dependent)
- Continued management