

OVERALL LANDSCAPE PLAN

LANDSCAPE SCHEDULE

TREES	CODE	BOTANICAL NAME / COMMON NAME	CONT	QTY
	AG	Amelanchier x grandiflora 'Autumn Brilliance' / 'Autumn Brilliance' Serviceberry	6" Clump B&B	6
	GA	Ginkgo biloba 'Autumn Gold' TM / Autumn Gold Ginkgo	2.5" Cal B&B	18
	GD	Gymnocladus dioica 'Espresso' / Kentucky Coffeetree 'Espresso'	2.5" Cal B&B	16
	QB	Quercus bicolor / Swamp White Oak	2.5" Cal B&B	17
	SR	Syringa reticulata / Japanese Tree Lilac	2" Cal B&B	10
SHRUBS	CODE	BOTANICAL NAME / COMMON NAME	SIZE	QTY
	CA	Cornus stolonifera 'Arctic Fire' / Arctic Fire Dogwood	5 gal	9
	DL	Diervilla lonicera / Dwarf Bush Honeysuckle	5 gal	101
	PD	Physocarpus opulifolius 'Monlo' TM / Diablo Purple Ninebark	5 gal	12
	RG	Rhus aromatica 'Gro Low' / 'Gro Low' Fragrant Sumac	5 gal	91
PERENNIALS	CODE	BOTANICAL NAME / COMMON NAME	SIZE	QTY
	AS	Artemisia schmidtiana / Silver Mound Artemisia	1 gal	196
	HB	Helictotrichon sempervirens 'Blue Oats' / Blue Oat Grass	1 gal	73
	HS	Hemerocallis x 'Stella Bella' / Stella Bella Daylily	1 gal	201
	HP	Heuchera americana 'Palace Purple' / Rock Geranium	1 gal	46
	RL	Rudbeckia fulgida 'Little Goldstar' / 'Little Goldstar' Black-Eyed Susan	1 gal	156
	SP	Sedum x 'Purple Emperor' / Purple Emperor Sedum	1 gal	240
	ST	Sporobolus heterolepis 'Tara' / Prairie Dropseed Tara	1 gal	444

PLANTING NOTES

- ALL PLANTS, INCLUDING THEIR ROOTS, SHALL BE FREE FROM DISEASE, INSECTS OR OTHER INJURIOUS QUALITIES. ALL STATE, LOCAL AND FEDERAL LAWS PERTAINING TO THE INSPECTION, SALE AND SHIPMENT OF PLANT MATERIALS SHALL BE COMPLIED WITH. THE TRUNK OF THE TREES SHALL BE SOUND WITH NO LARGE WOUNDS. SMALL WOUNDS SHALL HAVE SATISFACTORY CALLUS ROLL FORMED OR FORMING OVER THEM. PLANTS SHALL SHOW GOOD ANNUAL GROWTH. EVERGREEN FOLIAGE SHALL HAVE GOOD, INTENSE COLOR.
- ALL PLANTS SHALL BE TRUE TO TYPE, HAVE NORMAL AND WELL DEVELOPED BRANCH SYSTEM, AND HAVE A VIGOROUS AND FIBROUS ROOT SYSTEM. ALL PLANTS SHALL ALSO BE FREE FROM DEFECTS, INJURIES, ABRASIONS OF THE BARK, PLANT DISEASES, INSECT EGGS, BORERS AND ALL FORMS OF INFESTATION. ALL NEW PLANTS SHALL BE NURSERY GROWN.
- PLANTS SHALL CONFORM TO THE SIZES SPECIFIED ON THE PLANT SCHEDULE. OVERSIZED PLANTS MAY BE USED UPON WRITTEN AUTHORIZATION FROM THE LANDSCAPE ARCHITECT, BUT WILL NOT INCREASE CONTRACT PRICE. THE LANDSCAPE ARCHITECT SHALL MAKE THE FINAL DETERMINATION AS TO WHETHER THE PLANTS MEET THE SIZE REQUIREMENTS IN ACCORDANCE WITH THE IDENTIFIED STANDARDS.
- DELIVER, STORE, AND PROTECT PLANTS UNTIL PLANTED.
- DO NOT INSTALL PLANT LIFE WHEN AMBIENT TEMPERATURES MAY DROP BELOW 35 DEGREES F OR ABOVE 90 DEGREES F OR WHEN WIND VELOCITY EXCEEDS 30 MPH.
- ALL PLANT MATERIALS ARE SUBJECT TO INSPECTION BY THE OWNER/LANDSCAPE ARCHITECT AT ANY POINT UP TO AND INCLUDING SUBSTANTIAL COMPLETION. PLANT MATERIALS THAT ARE FOUND TO BE SUBSTANDARD WILL BE REJECTED DURING THESE INSPECTIONS. PLANTS THAT ARE FOUND TO BE ACCEPTABLE UPON INITIAL INSPECTION ARE STILL SUBJECT TO A FINAL INSPECTION. THE OWNER/LA WILL ESTABLISH AN INSPECTION SCHEDULE WITH THE CONTRACTOR PRIOR TO COMMENCING WORK TO ENSURE THAT PLANT MATERIALS ARE MEETING SPECIFICATION REQUIREMENTS.
- AFTER THE CONTRACTOR HAS INSTALLED ALL PLANT MATERIALS AND COMPLETED ALL OTHER REQUIREMENTS OF THE CONTRACT, THE OWNER/LA WILL COMPLETE A FINAL INSPECTION OF ALL PLANT MATERIALS, INCLUDING THOSE THAT HAVE BEEN PREVIOUSLY INSPECTED. PLANT MATERIALS FOUND TO BE SUBSTANDARD WILL BE REJECTED DURING THIS INSPECTION. REPLACEMENT PLANTS MUST BE IN PLACE, INSPECTED AND ACCEPTED PRIOR TO SUBSTANTIAL COMPLETION. THE CERTIFICATE OF SUBSTANTIAL COMPLETION WILL NOT BE ISSUED, AND WARRANTY PERIOD WILL NOT BEGIN, UNTIL ALL PLANT MATERIALS ARE INSTALLED AND ACCEPTED.
- GUARANTEE PERIOD WILL BEGIN AFTER THE FINAL INSPECTION. REPLACEMENTS ARE MADE AND ON THE DATE WHEN THE CERTIFICATE OF SUBSTANTIAL COMPLETION IS ISSUED. THE GUARANTEE PERIOD STARTING DATE WILL BE THE SAME FOR ALL PLANT MATERIALS. THE GUARANTEE PERIOD WILL LAST FOR A PERIOD OF TWO (2) YEARS. GUARANTEE PERIOD REPLACEMENTS: ANY TREE, SHRUB OR GROUND COVER THAT IS DEAD, NOT SHOWING SATISFACTORY GROWTH (AT THE DISCRETION OF THE OWNER/LA) OR SHOWING INDICATIONS OF DISEASE / PESTS SHALL BE REMOVED FROM THE SITE AND REPLACED WITH LIKE MATERIAL. VANDALISM IS NOT CONSIDERED THE CONTRACTOR'S RESPONSIBILITY. HOWEVER, IF THE OWNER REMOVES A PLANT THAT HAS DIED PRIOR TO INSPECTION (DUE TO SITE SAFETY/AESTHETIC CONCERNS), THE CONTRACTOR SHALL STILL BE RESPONSIBLE FOR REPLACING IT.
- TREES PLANTS AND GROUND COVER: SPECIES AND SIZE IDENTIFIABLE IN PLANT SCHEDULE, GROWN IN CLIMATIC CONDITIONS SIMILAR TO THOSE IN LOCALITY OF THE WORK.
- THE ROOTS OF ALL PLANT MATERIALS SHALL BE FREE OF KINKS, CIRCLING AND GIRDLING. TRANSPORT ROOTS SHALL BE SYMMETRICAL AROUND THE TRUNK/STEM OF THE PLANT.
- AVOID EXCESSIVE COMPACTION OF PLANTING BED SOILS DURING AND AFTER PLACEMENT.
- REMOVE ROOTS, WEEDS, ROCKS OVER ONE INCH (1") IN ANY DIMENSION, AND ANY FOREIGN MATERIAL WHILE SPREADING.
- PLANT TREES AND SHRUBS AT THE DEPTH AT WHICH THEY GREW IN THE NURSERY WITH ROOT COLLARS / FLARES PLACED AT GROUND LEVEL AND NOT ANY LOWER.
- DISCARD/HAUL EXCESS EARTHEN MATERIAL OFF-SITE, UNLESS DIRECTED OTHERWISE BY THE OWNER/LA-E.
- CONTAINER GROWN PLANT MATERIAL: REMOVE ALL ROOT CONTAINERS AND CUT ALL ROPE, WIRE, ETC. ATTACHING ROOT CONTAINER TO THE STEM. IF THE ROOTS ARE GROWING IN A SPIRAL AROUND THE SOIL BALL, SEVER AND SEPARATE IN THE FOLLOWING MANNER: USING A SHARP KNIFE, MAKE A CRISS-CROSS CUT ON THE BOTTOM OF THE BALL AND VERTICAL CUT THE SIDES DEEP ENOUGH TO CUT THE ROOTS.
- BALLED AND BURLAP PLANT MATERIAL: LIFT FROM BENEATH THE BALL, NOT BY THE TRUNK. DO NOT LOOSEN OR BREAK THE SOIL BALL. FILL PLANTING PIT THREE QUARTERS (3/4) FULL AND TAMP. CUT AND REMOVE THE ROPE OR TWINE AROUND THE TRUNK. PULL THE BURLAP AWAY FROM THE TRUNK AND TOP OF THE BALL. BEND AND REMOVE ALL WIRE BASKETS AND BURLAP FROM THE TOP HALF OF THE ROOTBALL.
- FERTILIZE AT THE TIME OF PLANTING WITH A SLOW RELEASE, BALANCED FERTILIZER (USE ACCORDING TO THE MANUFACTURER'S INSTRUCTIONS). MIX THE FERTILIZER IN WITH THE BACKFILL OR BROADCAST IN A DIAMETER AROUND THE PLANT. DO NOT APPLY NITROGEN IN THE LATE SUMMER OR ANY FERTILIZER TO EVERGREEN SHRUBS AND SHRUBS PLANTED IN THE LATE SUMMER OR EARLY FALL.
- PRUNING: REMOVE DEAD OR DAMAGED LIMBS. PRUNING SHOULD LEAVE THE BRANCH COLLAR BUT NOT LEAVE A STUB. PRUNE WHEN THE PLANT IS DORMANT.

Date Printed: 3/15/2018
WSB filename: N:\1375-000-Cad\Plan\011375-000-L-PLANT.dwg

NO.	DATE	BY	CHK	REVISIONS

DESIGN BY:	EK, KR
PLAN BY:	EK, KR
CHECKED BY:	BS, EK
APPROVED BY:	BS

I HEREBY CERTIFY THAT THIS PLAN, SPECIFICATION, OR REPORT WAS PREPARED BY OR UNDER MY DIRECT SUPERVISION AND THAT I AM A DULY LICENSED PROFESSIONAL ENGINEER UNDER THE LAWS OF THE STATE OF MINNESOTA.	
CERTIFIED BY:	ROBERT A. SLIPKA III
DATE: 3/15/18	LIC. NO.: 44337

701 Xenia Avenue South, Suite 300
Minneapolis, MN 55416
www.ws beng.com

763-541-4800 • Fax 763-541-1700

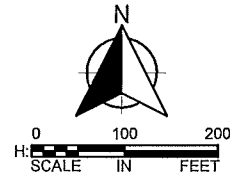
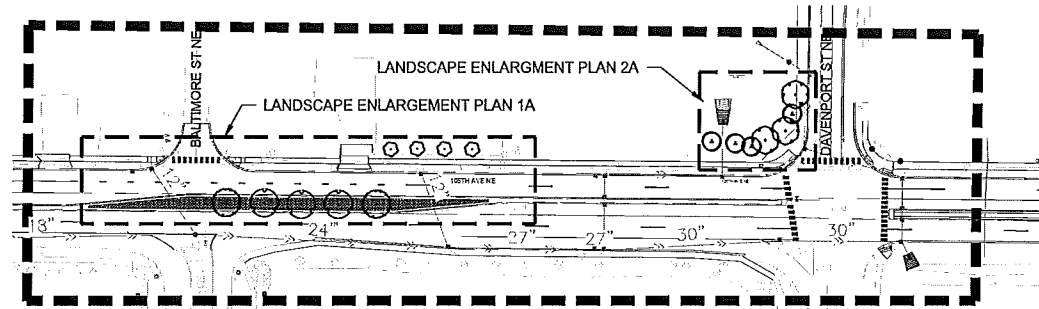
INFRASTRUCTURE ■ ENGINEERING ■ PLANNING ■ CONSTRUCTION

105TH AVENUE NE
LANDSCAPE
IMPROVEMENTS

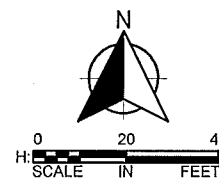
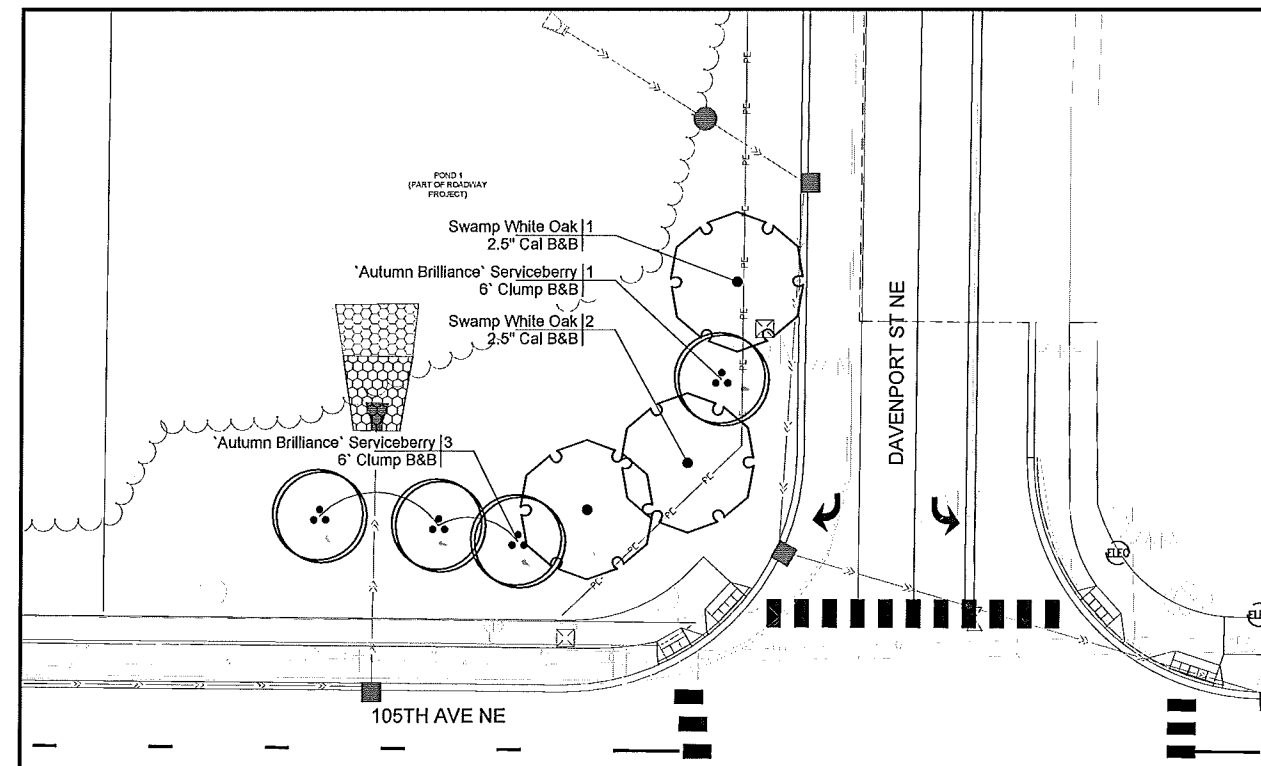
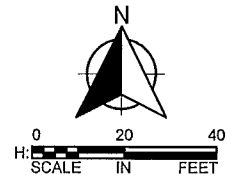
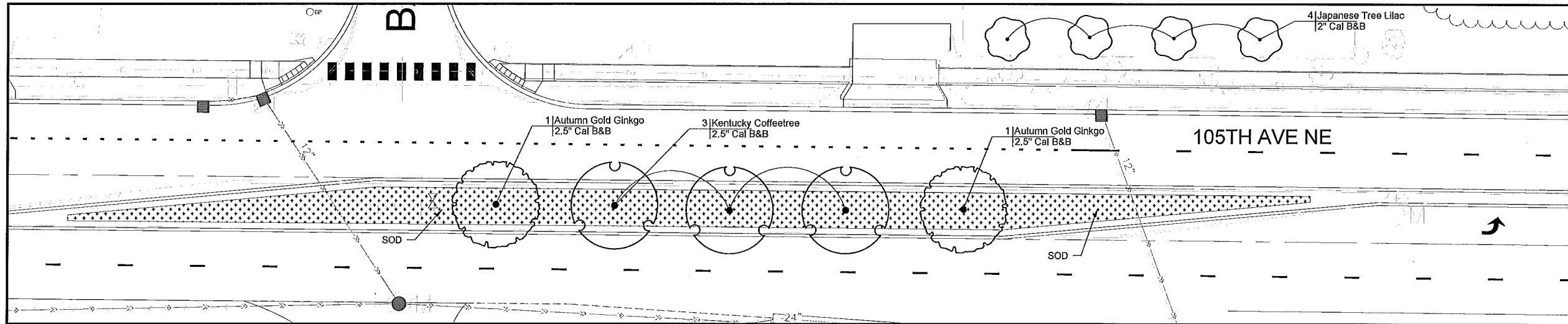
CITY OF BLAINE, MINNESOTA

OVERALL LANDSCAPE PLAN AND PLANTING
SCHEDULE
SAP XXX-XXX-XXX, CP XX-XX

SHEET
L2.0
OF
19
SHEETS



LEGEND	
	SOD
	COLORLED CONCRETE
	DECORATIVE FENCE
	POLY EDGING



NO.	DATE	BY	CHK	REVISIONS

DESIGN BY: EK, KR
 PLAN BY: EK, KR
 CHECKED BY: BS, EK
 APPROVED BY: BS

I HEREBY CERTIFY THAT THIS PLAN, SPECIFICATION, OR REPORT WAS PREPARED BY OR UNDER MY DIRECT SUPERVISION AND THAT I AM A DULY LICENSED PROFESSIONAL ENGINEER UNDER THE LAWS OF THE STATE OF MINNESOTA.

CERTIFIED BY: ROBERT A. SLIPKA III
 DATE: 3/15/18 LIC. NO.: 44337

WSB
 & Associates, Inc.
 701 Xenia Avenue South, Suite 300
 Minneapolis, MN 55416
 www.wsbeng.com
 763-541-4800 • Fax 763-541-1100
 INFRASTRUCTURE ■ ENGINEERING ■ PLANNING ■ CONSTRUCTION

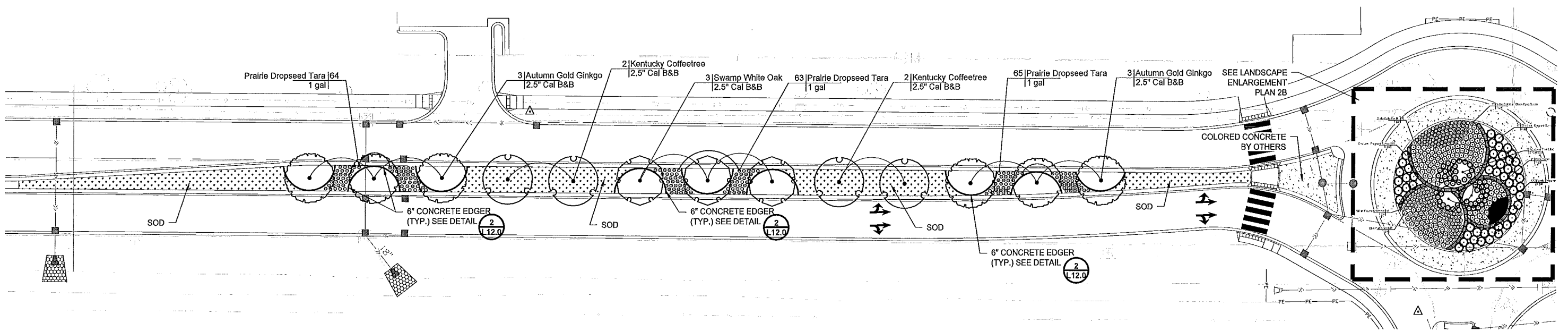
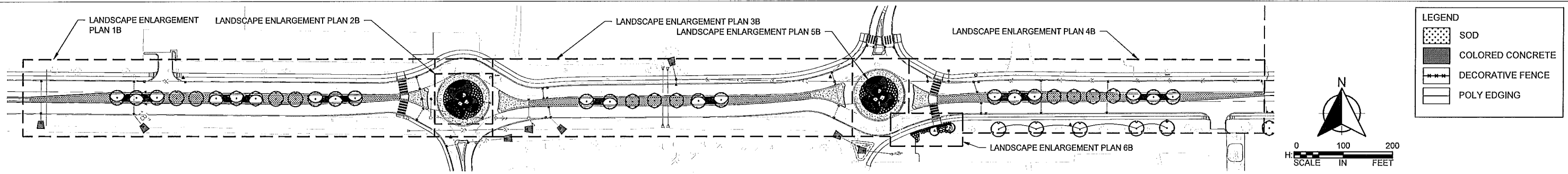


105TH AVENUE NE
 LANDSCAPE
 IMPROVEMENTS

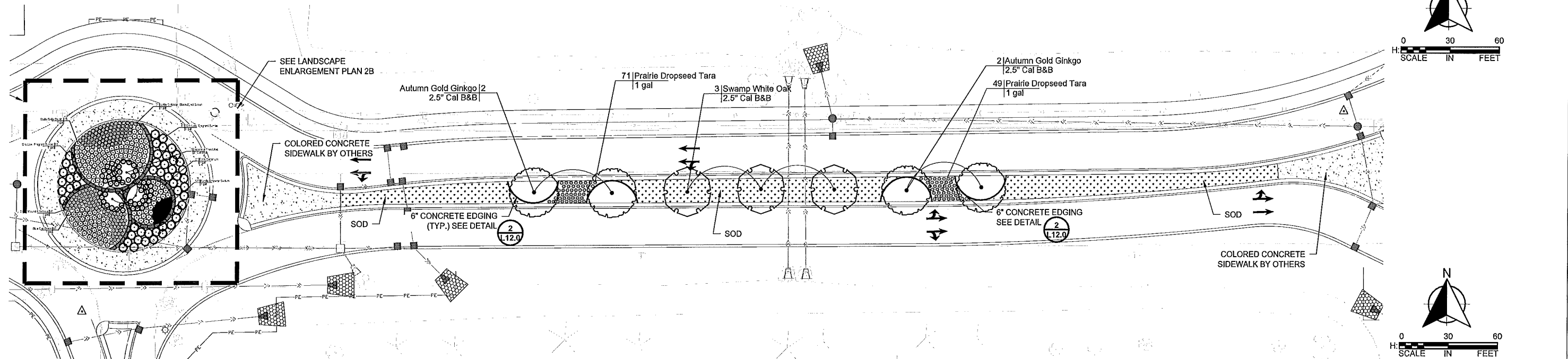
CITY OF BLAINE, MINNESOTA
 LANDSCAPE ENLARGEMENT PLAN A
 SAP XXX-XXX-XXX, CP XX-XX

SHEET
 L3.0
 OF
 19
 SHEETS

Date Printed: 3/15/2018
 WSB Blaine - K:\1378-000-000-Plan\01378-000-L-PLAN.dwg



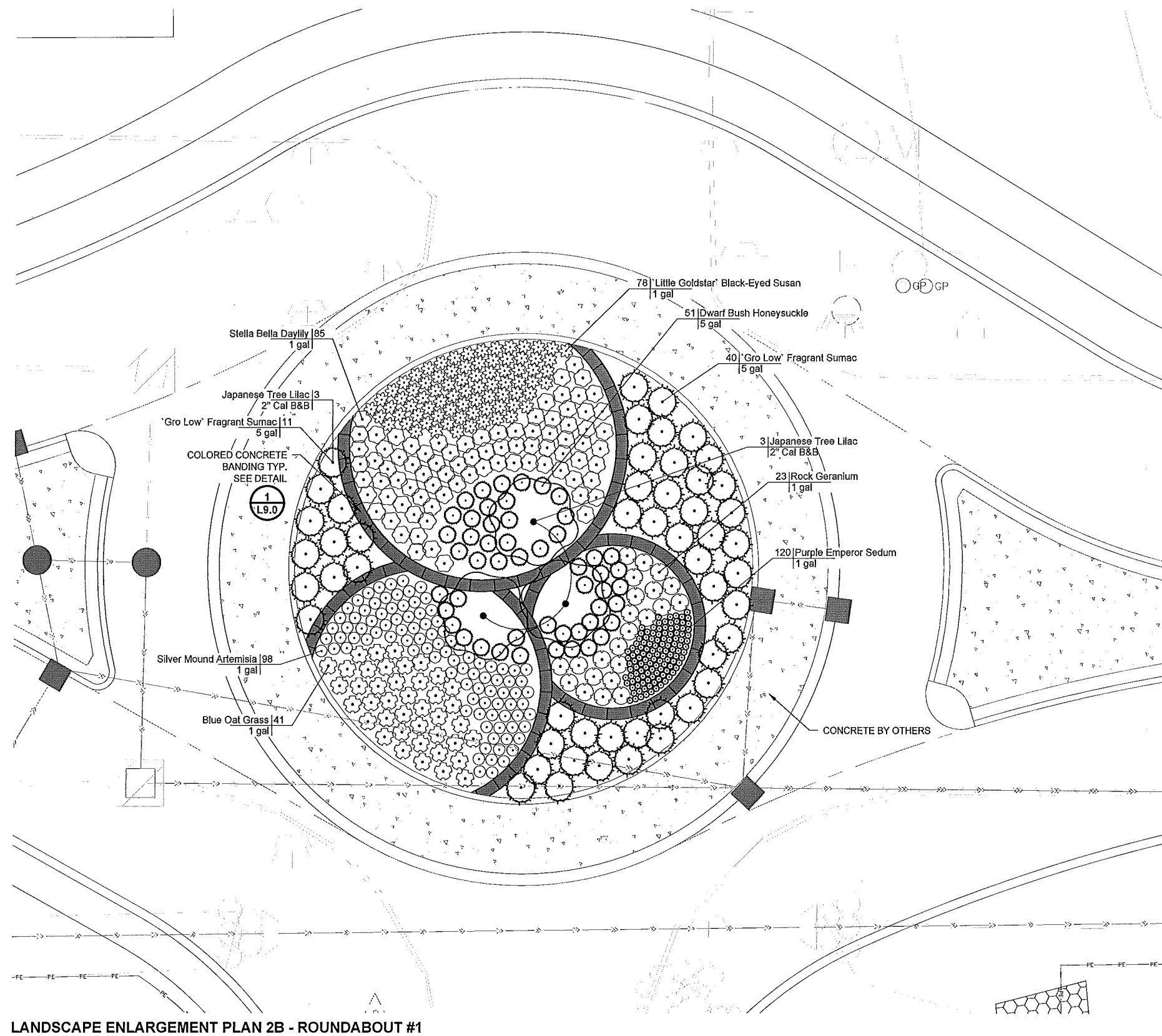
LANDSCAPE ENLARGEMENT PLAN 1B




LANDSCAPE ENLARGEMENT PLAN 3B


Date Printed: 3/15/2018
WSB Filename: K011376-000-000-Plan011376-000-PLAN.dwg

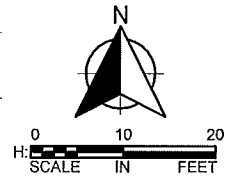
NO.					DATE	BY	CHK	REVISIONS	DESIGN BY: EK, KR		I HEREBY CERTIFY THAT THIS PLAN, SPECIFICATION, OR REPORT WAS PREPARED BY OR UNDER MY DIRECT SUPERVISION AND THAT I AM A DULY LICENSED PROFESSIONAL ENGINEER UNDER THE LAWS OF THE STATE OF MINNESOTA.		 <div>701 Xenia Avenue South, Suite 300 Minneapolis, MN 55416 www.wsberg.com</div>				105TH AVENUE NE LANDSCAPE IMPROVEMENTS		CITY OF BLAINE, MINNESOTA LANDSCAPE ENLARGEMENT PLAN 1B,3B		SHEET L4.0 OF 19 SHEETS	
									PLAN BY: EK, KR		CERTIFIED BY: ROBERT A. SLIPKA III		763-541-4800 • Fax 763-541-1700 INFRASTRUCTURE ■ ENGINEERING ■ PLANNING ■ CONSTRUCTION						SAP XXX-XXX-XXX, CP XX-XX			
									CHECKED BY: BS, EK		DATE: 3/15/18 LIC. NO: 44337											
									APPROVED BY: BS													



LEGEND

 SOD

 COLORED CONCRETE




NO.	DATE	BY	CHK	REVISIONS

DESIGN BY:	EK, KR	I HEREBY CERTIFY THAT THIS PLAN, SPECIFICATION, OR REPORT WAS PREPARED BY OR UNDER MY DIRECT SUPERVISION AND THAT I AM A DULY LICENSED PROFESSIONAL ENGINEER UNDER THE LAWS OF THE STATE OF MINNESOTA.
PLAN BY:	EK, KR	
CHECKED BY:	BS, EK	
APPROVED BY:	BS	
		CERTIFIED BY: _____ ROBERT A. SLIPKA III DATE: <u>3/15/18</u> LIC. NO.: <u>44337</u>


701 Xenia Avenue South, Suite 300
Minneapolis, MN 55416
www.wsbg.com
& Associates, Inc.

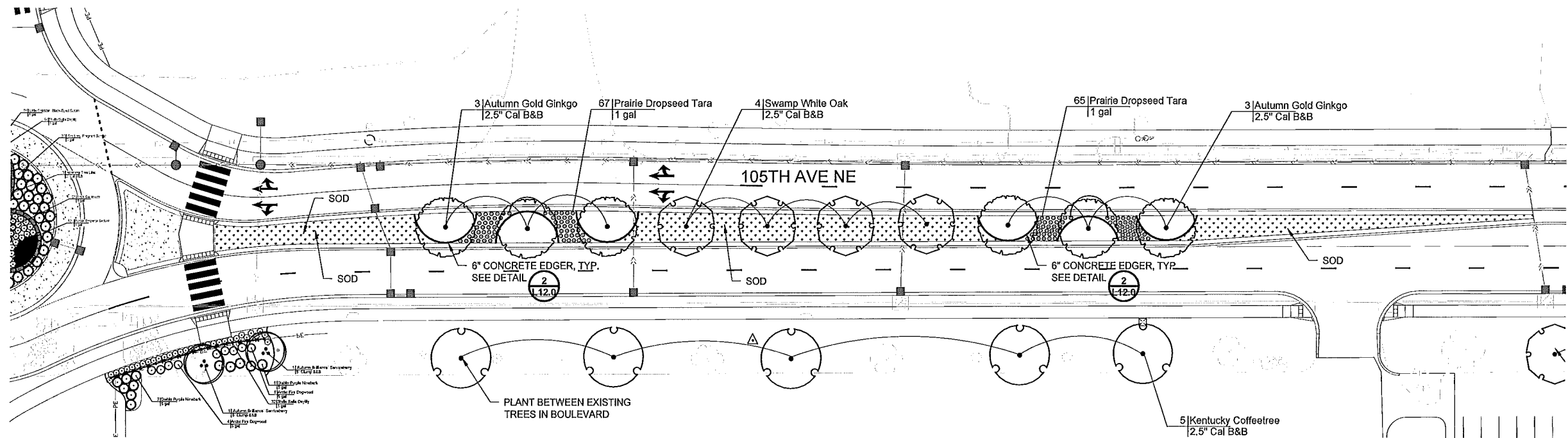
763-541-4600 • Fax 763-541-1709
INFRASTRUCTURE ■ ENGINEERING ■ PLANNING ■ CONSTRUCTION



**105TH AVENUE NE
LANDSCAPE
IMPROVEMENTS**

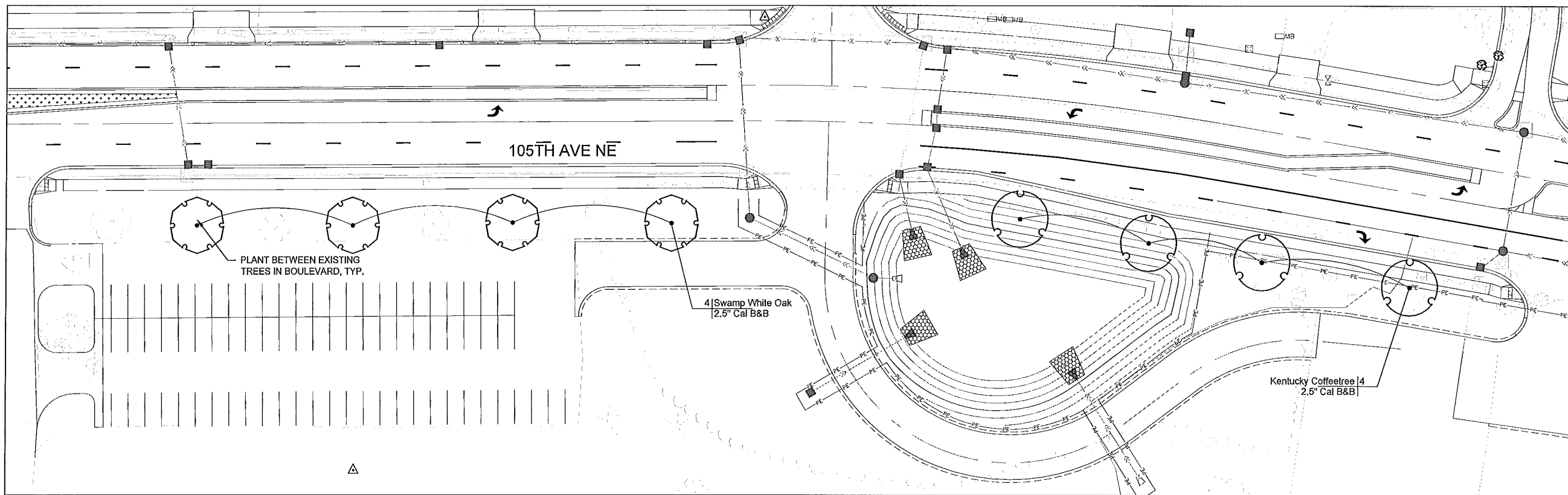
CITY OF BLAINE, MINNESOTA
LANDSCAPE ENLARGEMENT PLAN 2B
SAP XXX-XXX-XXX, CP XX-XX

SHEET
L5.0
OF
19
SHEETS



LEGEND	
	SOD
	COLORED CONCRETE
	DECORATIVE FENCE
	POLY EDGING

LANDSCAPE ENLARGEMENT PLAN 4B



LANDSCAPE ENLARGEMENT PLAN C

Date Printed: 3/15/2018
WSB Filename: X:\01\1375-000-000-Plan\011375-000-L-Plant.dwg

NO.	DATE	BY	CHK	REVISIONS

DESIGN BY:	EK, KR
PLAN BY:	EK, KR
CHECKED BY:	BS, EK
APPROVED BY:	BS

I HEREBY CERTIFY THAT THIS PLAN, SPECIFICATION, OR REPORT WAS PREPARED BY OR UNDER MY DIRECT SUPERVISION AND THAT I AM A DULY LICENSED PROFESSIONAL ENGINEER UNDER THE LAWS OF THE STATE OF MINNESOTA.	
CERTIFIED BY:	ROBERT A. SLIPKA III
DATE:	3/15/18
LIC. NO.:	44337

WSB
Associates, Inc.
701 Xenia Avenue South, Suite 300
Minneapolis, MN 55416
www.wsbg.com
763-541-4800 • Fax 763-541-1700
INFRASTRUCTURE ■ ENGINEERING ■ PLANNING ■ CONSTRUCTION



**105TH AVENUE NE
LANDSCAPE
IMPROVEMENTS**

CITY OF BLAINE, MINNESOTA
LANDSCAPE ENLARGEMENT PLAN 4B, C
SAP XXX-XXX-XXX, CP XX-XX

**SHEET
L6.0
OF
19
SHEETS**

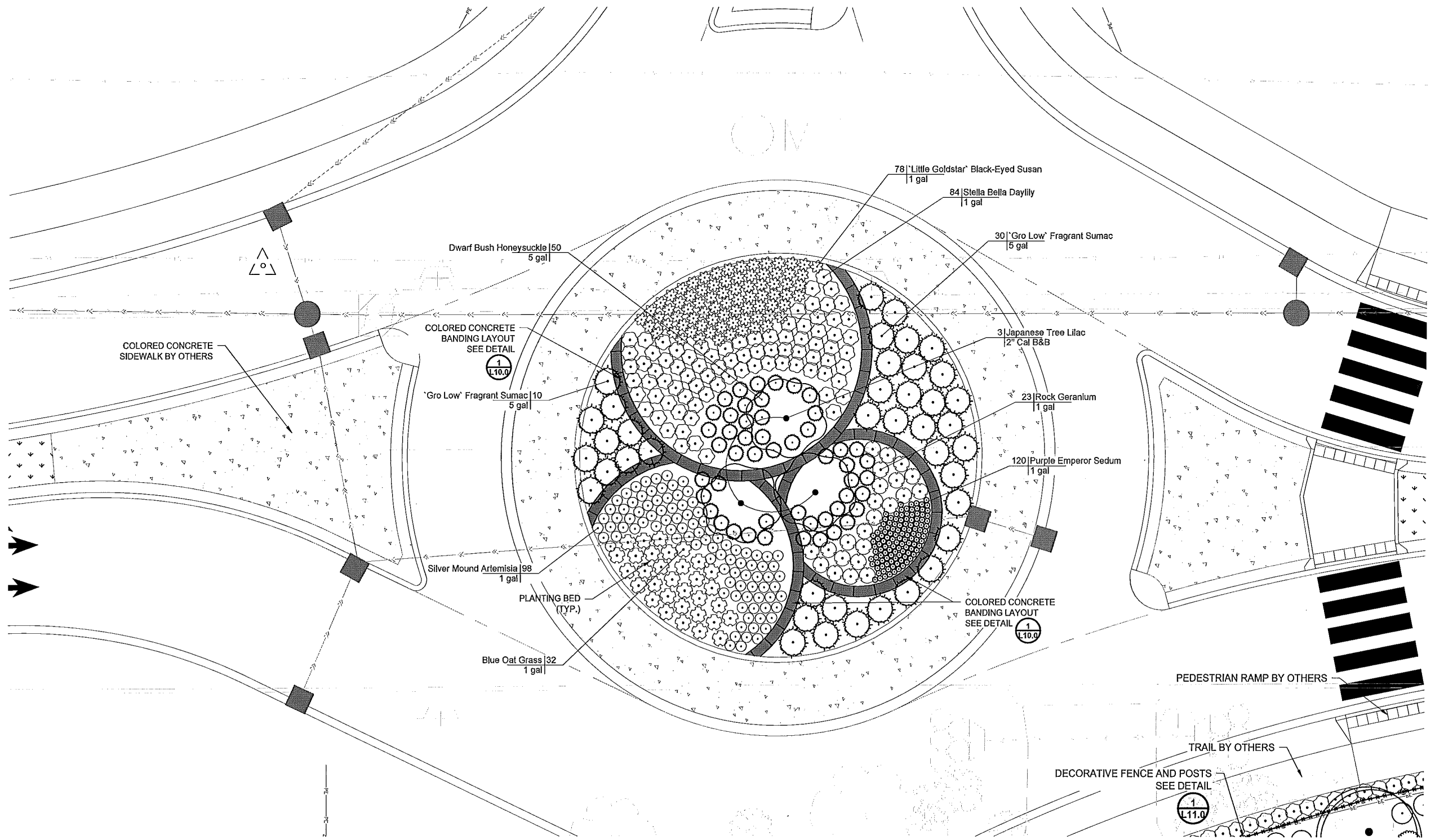
LEGEND

SOD

COLORED CONCRETE

DECORATIVE FENCE

POLY EDGING



Date Printed: 3/15/2018
WSB File Name: K:\11\1376-000-Cad\Plan\11\1376-000-L-PLAN.dwg

NO.	DATE	BY	CHK	REVISIONS

DESIGN BY:

EK, KR

PLAN BY:

EK, KR

CHECKED BY:

BS, EK

APPROVED BY:

BS

I HEREBY CERTIFY THAT THIS PLAN, SPECIFICATION, OR REPORT WAS PREPARED BY OR UNDER MY DIRECT SUPERVISION AND THAT I AM A DULY LICENSED PROFESSIONAL ENGINEER UNDER THE LAWS OF THE STATE OF MINNESOTA.

CERTIFIED BY:

ROBERT A. SLIPKA III

DATE: 3/15/18

LIC. NO: 44337

WSB

& Associates, Inc.

701 Xenia Avenue South, Suite 300

Minneapolis, MN 55416

www.ws beng.com

763-541-4800 • Fax 763-541-1700

INFRASTRUCTURE ■ ENGINEERING ■ PLANNING ■ CONSTRUCTION



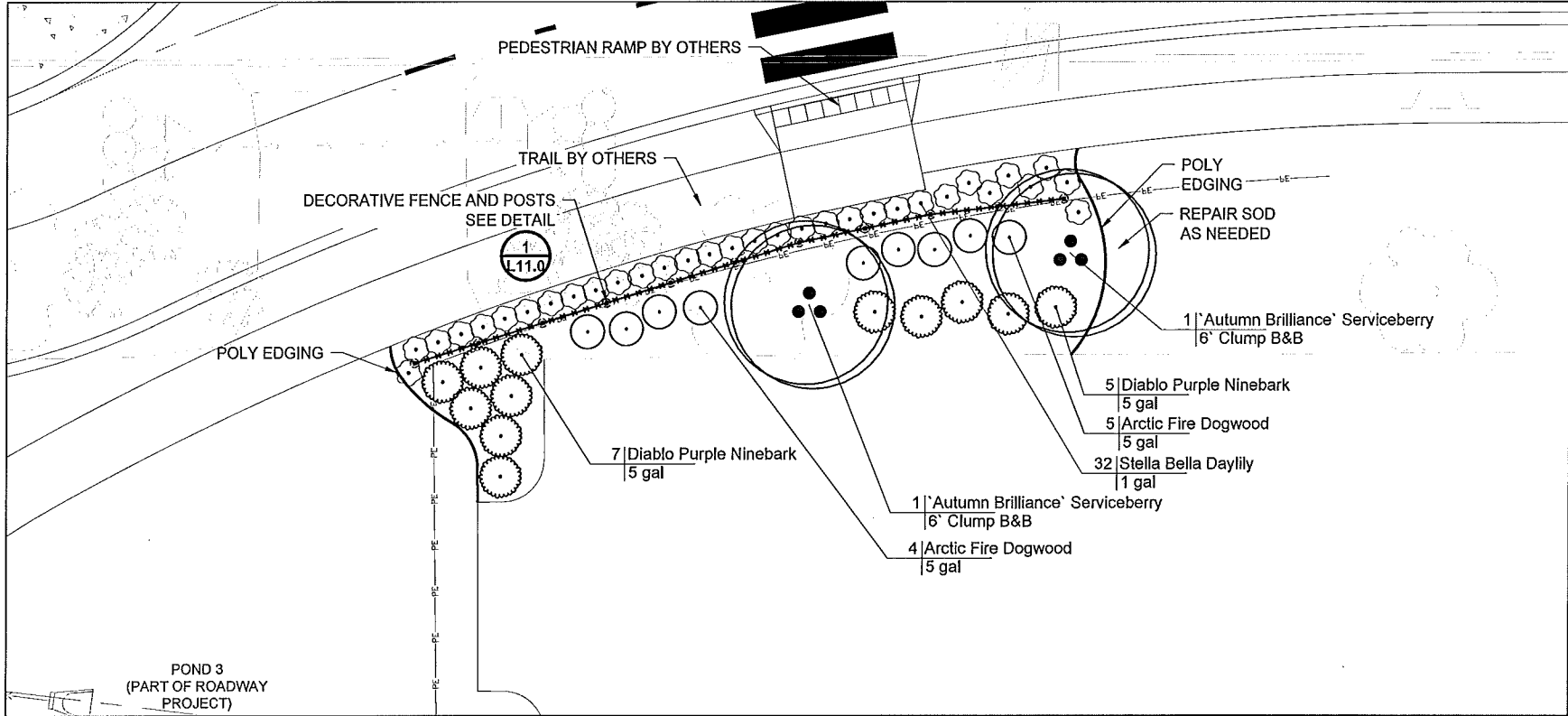
105TH AVENUE NE
LANDSCAPE
IMPROVEMENTS

CITY OF BLAINE, MINNESOTA

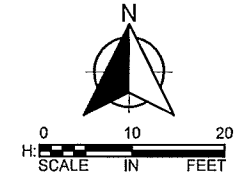
LANDSCAPE ENLARGEMENT PLAN 5B

SAP XXX-XXX-XXX, CP XX-XX

SHEET
L7.0
OF
19
SHEETS



LEGEND	
	SOD
	COLORED CONCRETE
	DECORATIVE FENCE
	POLY EDGING



LANDSCAPE ENLARGEMENT PLAN 6B

Date Printed: 3/15/2018
WSB File Name: K:\11\1376-000-000\Plan\01\1376-000-000-PLAN.dwg

NO.	DATE	BY	CHK	REVISIONS

DESIGN BY:	EK, KR
PLAN BY:	EK, KR
CHECKED BY:	BS, EK
APPROVED BY:	BS

I HEREBY CERTIFY THAT THIS PLAN, SPECIFICATION, OR REPORT WAS PREPARED BY OR UNDER MY DIRECT SUPERVISION AND THAT I AM A DULY LICENSED PROFESSIONAL ENGINEER UNDER THE LAWS OF THE STATE OF MINNESOTA.

CERTIFIED BY: ROBERT A. SLIPKA III

DATE: 3/15/18 LIC. NO: 44337

WSB
& Associates, Inc.

701 Xenia Avenue South, Suite 300
Minneapolis, MN 55416
www.ws beng.com

763-541-4800 • Fax 763-541-1700
INFRASTRUCTURE ■ ENGINEERING ■ PLANNING ■ CONSTRUCTION



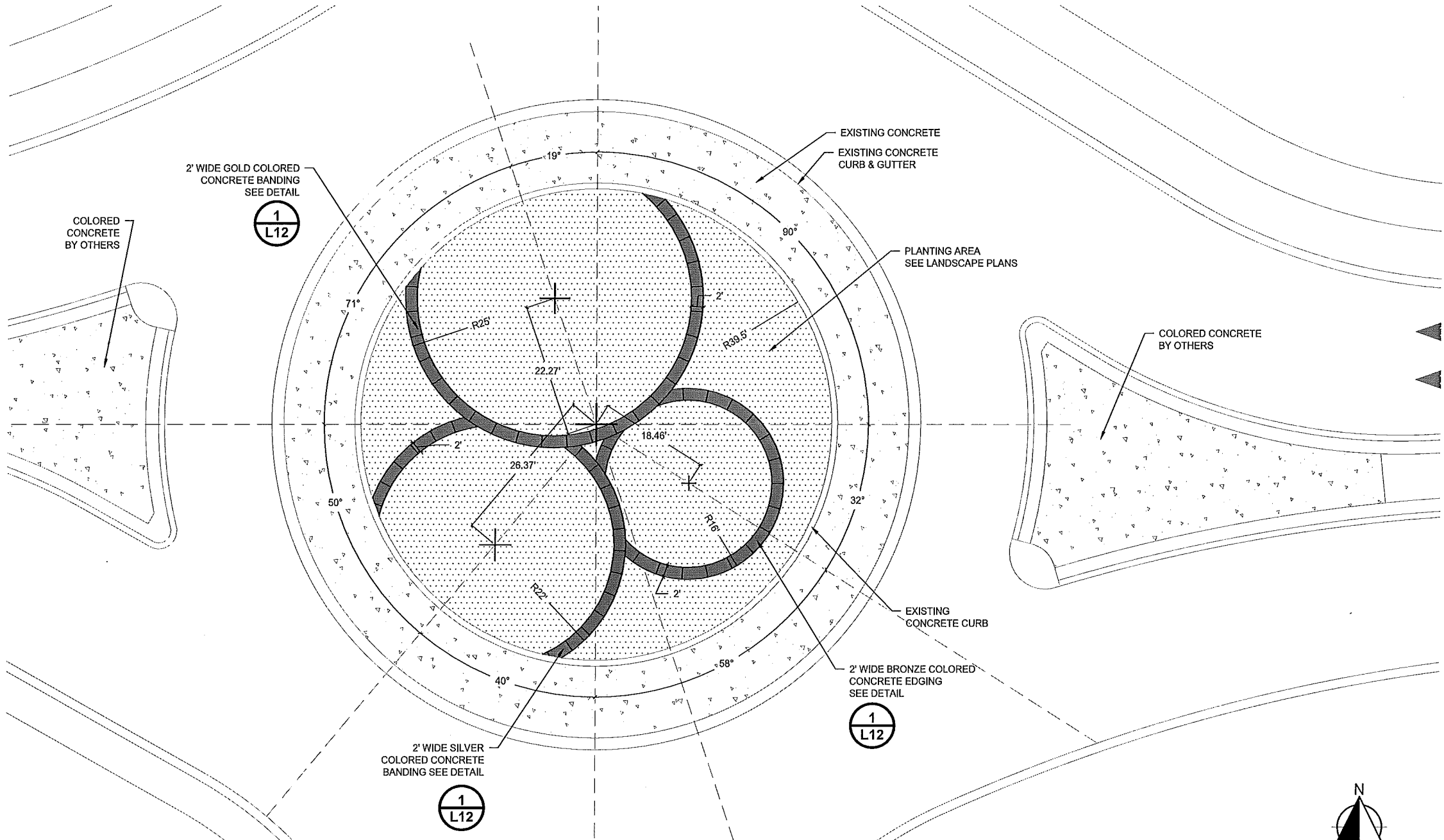
105TH AVENUE NE
LANDSCAPE
IMPROVEMENTS

CITY OF BLAINE, MINNESOTA LANDSCAPE ENLARGEMENT PLAN 6B SAP XXX-XXX-XXX, CP XX-XX	SHEET L8.0 OF 19 SHEETS

LEGEND

PLANTING AREA
SEE SPECS/NOTES

6" THICK COLORED CONCRETE BANDING

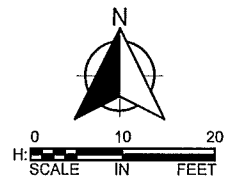


1

ROUNDABOUT #1 LAYOUT

L9.0

SCALE: 1" = 10'-0"



Date Printed: 3/15/2018
 WSB Filename: K:\11\13754000\Drawings\13754000-DET1.dwg

NO.	DATE	BY	CHK	REVISIONS

DESIGN BY:	EK, KR
PLAN BY:	EK, KR
CHECKED BY:	BS, EK
APPROVED BY:	BS

I HEREBY CERTIFY THAT THIS PLAN, SPECIFICATION, OR REPORT WAS PREPARED BY OR UNDER MY DIRECT SUPERVISION AND THAT I AM A DULY LICENSED PROFESSIONAL ENGINEER UNDER THE LAWS OF THE STATE OF MINNESOTA.	
CERTIFIED BY:	ROBERT A. SLIPKA III
DATE:	3/15/18
LIC. NO.:	44337

WSB

& Associates, Inc.

701 Xenia Avenue South, Suite 300

Minneapolis, MN 55416

www.wsbeng.com

763-541-4800 • Fax 763-541-1703

INFRASTRUCTURE ■ ENGINEERING ■ PLANNING ■ CONSTRUCTION



105TH AVENUE NE
 LANDSCAPE
 IMPROVEMENTS

CITY OF BLAINE, MINNESOTA

ROUNDABOUT 1 LAYOUT

SAP XXX-XXX-XXX, CP XX-XX

SHEET
 L9.0
 OF
 19
 SHEETS