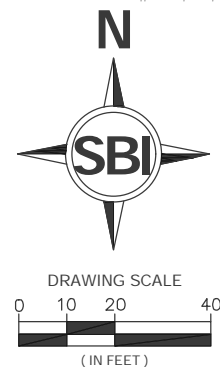


EDA Item Blaine Medical Center

Blaine Planning Department / 10801 Town Square Dr NE / Blaine, MN 55449 / (763) 785-6180

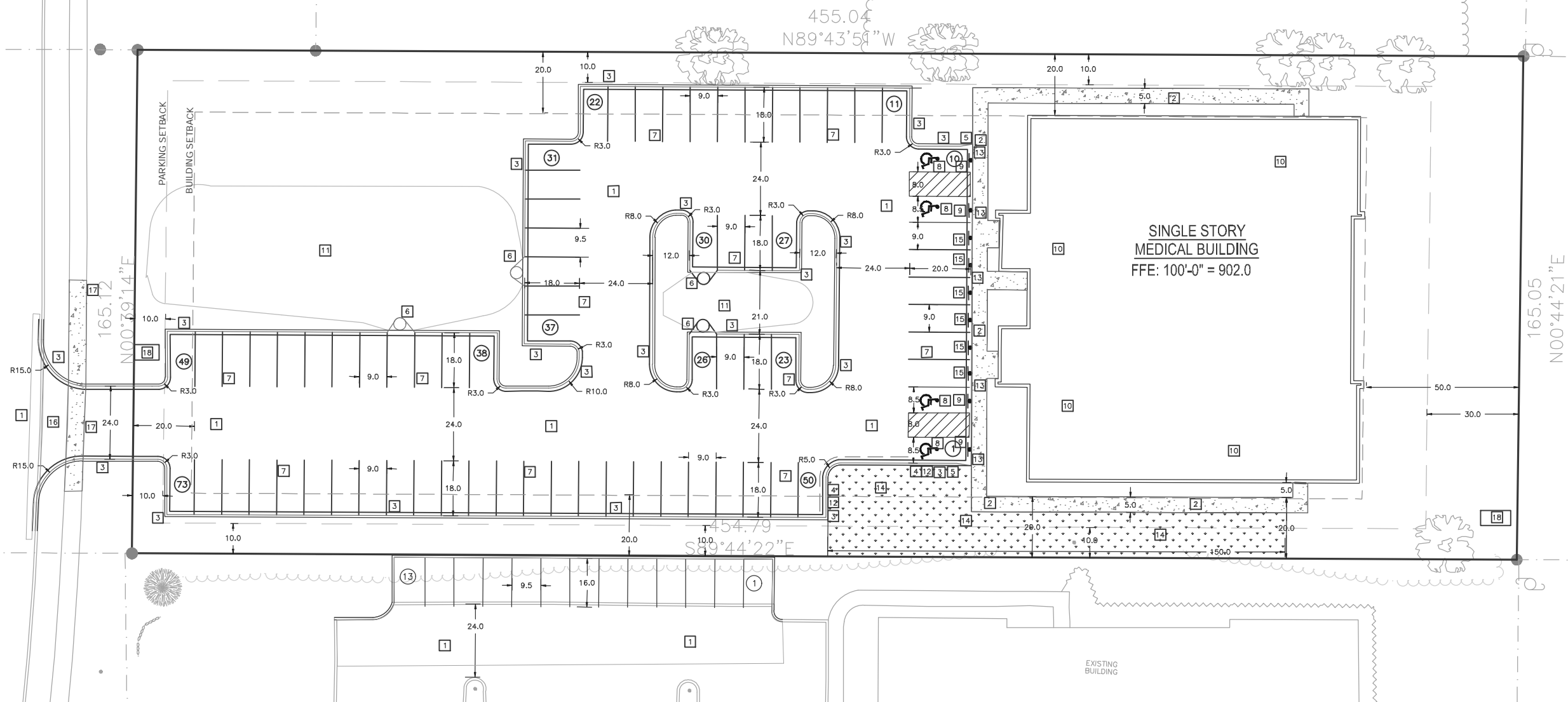




Know what's below.
Call before you dig.

STATE LAW: 48 HOURS BEFORE EXCAVATING OR
DEMOLISHING BUILDINGS, CALL 811 FOR FIELD LOCATION
OF UNDERGROUND UTILITY LINES. THIS SERVICE LOCATES
UTILITY OWNED LINES BUT NOT PRIVATE LINES.

THE LOCATIONS OF UNDERGROUND UTILITIES ARE SHOWN IN AN APPROXIMATE WAY ONLY AND HAVE NOT BEEN INDEPENDENTLY VERIFIED. THE EXACT LOCATION OF ALL UTILITIES (PUBLIC AND PRIVATE) MUST BE DETERMINED BEFORE COMMENCING WORK.



SIGNAGE AND MARKING NOTES:

1. ALL SIGNS SHALL BE IN ACCORDANCE WITH THE MN MUTCD, CURRENT VERSION.
2. SEE REGULATORY SIGN DETAIL FOR SIGN AND POST DETAILS AND SIGN DESIGNATION AND SIZE INFORMATION.
3. ACCESSIBLE PARKING SIGNS SHALL BE PER MINNESOTA MUTCD SIGN R7-8M, VAN ACCESSIBLE PARKING SIGNS PER R7-8BP WHERE INDICATED AS "VAN". SEE ACCESSIBLE SIGN AND POST DETAIL.
4. PROVIDE 4" WIDE SOLID WHITE STRIPING IN PARKING AREAS, UNLESS NOTED OTHERWISE.
5. PROVIDE PAVEMENT MARKINGS AND PAINT SYMBOLS AT ACCESSIBLE PARKING SPACES PER MN MUTCD, ADA AND LOCAL CODE.

CIVIL SITE LEGEND:



ACCESSIBLE PARKING STALL
SIGN



PARKING STALL COUNT
CONCRETE CURB AND GUTTER



BITUMINOUS PAVEMENT



CONCRETE WALK/PAVEMENT

RAIN GUARDIAN PRE-TREATMENT
INLET DEVICE

GENERAL GEOMETRIC AND PAVING NOTES:

1. SITE DIMENSIONS SHOWN ON THIS PLAN SHALL BE USED FOR ALL LAYOUT WORK. CHECK ALL PLAN AND DETAIL DIMENSIONS, BUILDING AND PAVING SHALL BE LAID OUT ON SITE BY A REGISTERED LAND SURVEYOR.
2. REFER TO ARCHITECTURAL PLANS FOR BUILDING LAYOUT, EXACT LOCATION AND DIMENSIONS OF STOOPS/EXITS, RAMPS AND TRUCK DOCKS AND PRECISE BUILDING DIMENSIONS.
3. ALL PAVING DIMENSIONS ARE TO FLOW LINE OF CURB UNLESS NOTED OTHERWISE. THE FLOW LINE OF CURB IS ASSUMED TO BE 8 INCHES FROM THE BACK OF CURB.
4. MEET REQUIREMENTS OF LOCAL GOVERNING AUTHORITY FOR WORK WITHIN THE PUBLIC RIGHT OF WAY, INCLUDING TEMPORARY TRAFFIC CONTROL. A TRAFFIC CONTROL PLAN SHALL BE PROVIDED AND APPROVED BY THE CITY PRIOR TO BEGINNING WORK IN THE RIGHT OF WAY.
5. ALL SIDEWALKS SHALL HAVE POSITIVE SLOPE AWAY FROM THE BUILDING. THE MAXIMUM CROSS SLOPE SHALL BE 2.0% AND THE MAXIMUM LONGITUDINAL SLOPE SHALL BE 5.0% UNLESS OTHERWISE SHOWN ON THE DRAWINGS.
6. NO SLOPE IN ANY DIRECTION SHALL EXCEED 2% IN ACCESSIBLE PARKING AND LOADING AREAS.
7. MATCH NEW AND EXISTING PAVEMENT SURFACES, SIDEWALKS AND CURBS AT SAWCUT LINES, ALLOWING NO PONDING OF WATER AT JOINTS. PROVIDE SMOOTH GRADE TRANSITION ACROSS NEW AND EXISTING JOINTS.
8. ALLOW MINIMUM OF SEVEN DAYS CURE FOR CURB AND GUTTER PRIOR TO PAVING.
9. ALLOW MINIMUM OF 24 HOUR COOLING PRIOR TO ALLOWING TRAFFIC ON BITUMINOUS PAVING.

KEY NOTES

- 1 BITUMINOUS PAVEMENT (SEE DETAIL SITE-1)
- 2 CONCRETE SIDEWALK (SEE DETAIL SITE-6)
- 3 B612 CONCRETE CURB AND GUTTER (SEE DETAIL SITE-7)
- 4 D412 SURMOUNTABLE CURB AND GUTTER (SEE DETAIL SITE-9)
- 5 CONCRETE CURB TAPER (SEE DETAIL SITE-11)
- 6 RAIN GUARDIAN PRE-TREATMENT INLET DEVICE – TURRET (SEE DETAILS GRAD-12)
- 7 4" YELLOW PARKING STRIPE, TYPICAL
- 8 ACCESSIBLE PARKING STRIPING (SEE DETAIL SITE-46)
- 9 ACCESSIBLE PARKING SIGN (SEE DETAIL SITE-38)
- 10 PROPOSED BUILDING. SEE ARCHITECTURAL FOR EXACT LOCATIONS AND DIMENSIONS OF VESTIBULES, DOORS, RAMPS, TRUCK DOCKS, TRASH ENCLOSURE, AND PRECISE BUILDING DIMENSIONS. SEE ARCHITECTURAL AND STRUCTURAL FOR STOOPS AND FOOTINGS.
- 11 STORMWATER BMP
- 12 CURB TAPER (MAX 2 FEET) FROM 6" HIGH CURB TO 4" HIGH CURB
- 13 PEDESTRIAN ACCESS ROUTE CURB (SEE DETAIL SITE-33)
- 14 REINFORCED TURF AS FIRE ACCESS ROUTE (SEE DETAIL SITE-56)
- 15 PATIENT PARKING ONLY SIGN (SEE DETAIL SITE-55)
- 16 DRIVEWAY APRON (SEE CITY DETAIL)
- 17 CITY SIDEWALK (SEE CITY DETAIL)
- 18 MONUMENT (SEE ARCHITECTURE PLAN)

REVISIONS BY



444 Cedar Street, Suite 1005 651-294-0038
Saint Paul, MN 55101 www.SolutionBlue.com

HEREBY CERTIFY THAT THIS PLAN OR SPECIFICATION WAS PREPARED BY ME OR UNDER MY DIRECTION, SUPERVISION AND THAT I AM A DULY REGISTERED CIVIL ENGINEER UNDER THE LAWS OF THE STATE OF MINNESOTA.

THE STATE OF CALIFORNIA
COUNTY OF LOS ANGELES
OFFICE OF THE CLERK OF THE SUPERIOR COURT
JULY 10 2017
RECEIVED
NO. 17-001514

CIVIL SITE PLAN

MSP COMMERCIAL
ULYSSES MEDICAL CENTER
BLAINE, MINNESOTA

DRAWN BY

NW, SEG

CHECKED BY _____

MGC, SEG	DATE
----------	------

DATE
9-1-17

JOB NO.

170603

SHEET

C4C

4.4. (

© 1998