

Case File No. 17-0016
Neil Moosaie

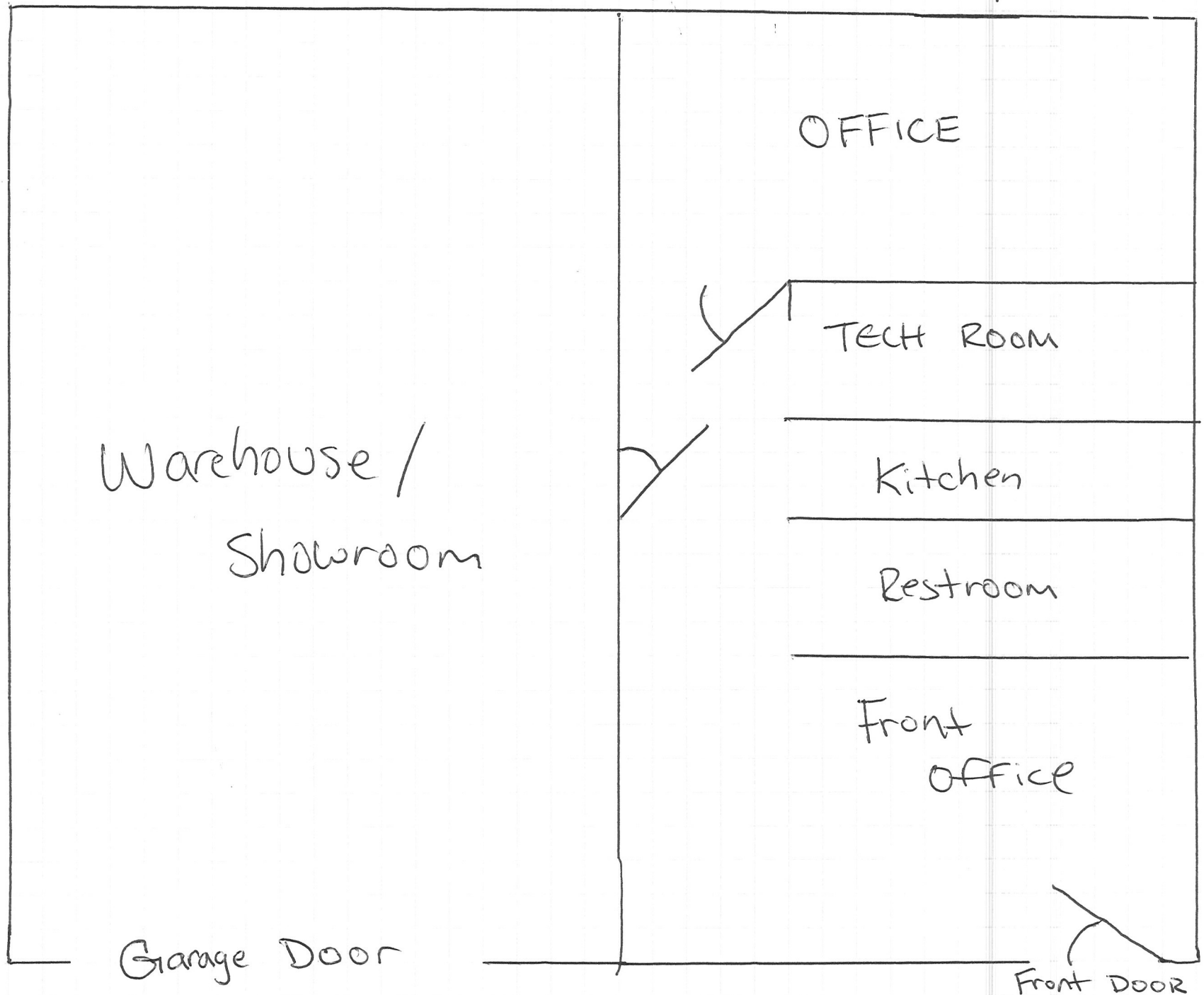
Blaine Planning Department / 10801 Town Square Dr NE / Blaine, MN 55449 / (763) 785-6180





1050 sq ft

950 sq ft



RedLine Motorsport, LLC

RedLine Motorsport, LLC plans on storing approximately:

1. Motorsport Sales and Trades
 - a. Sales of new and used
 - i. Motorcycles
 - ii. Scooters/Moped's
 - iii. Snowmobiles
 - iv. Light passenger vehicles
 - v. Atv's
 - b. Trades of new and used
 - i. Motorcycles
 - ii. Scooters/Moped's
 - iii. Snowmobiles
 - iv. Light passenger vehicles
 - v. Atv's
2. Sales of Motorcycle Apparel ,Safety Gear , and Accessories
 - a. Accounting for less than 8% of warehouse sq.ft.

RedLine Motorsport, LLC plans on storing approximately:

- 2 to 3 vehicles at any given time throughout the year
- 5 to 10 motorcycles (summer months only)
- 1 to 5 motorcycles (winter months only)
- 1 to 2 atv's at any given time throughout the year
- 2 to 3 snowmobiles (winter months only, zero during summer months)