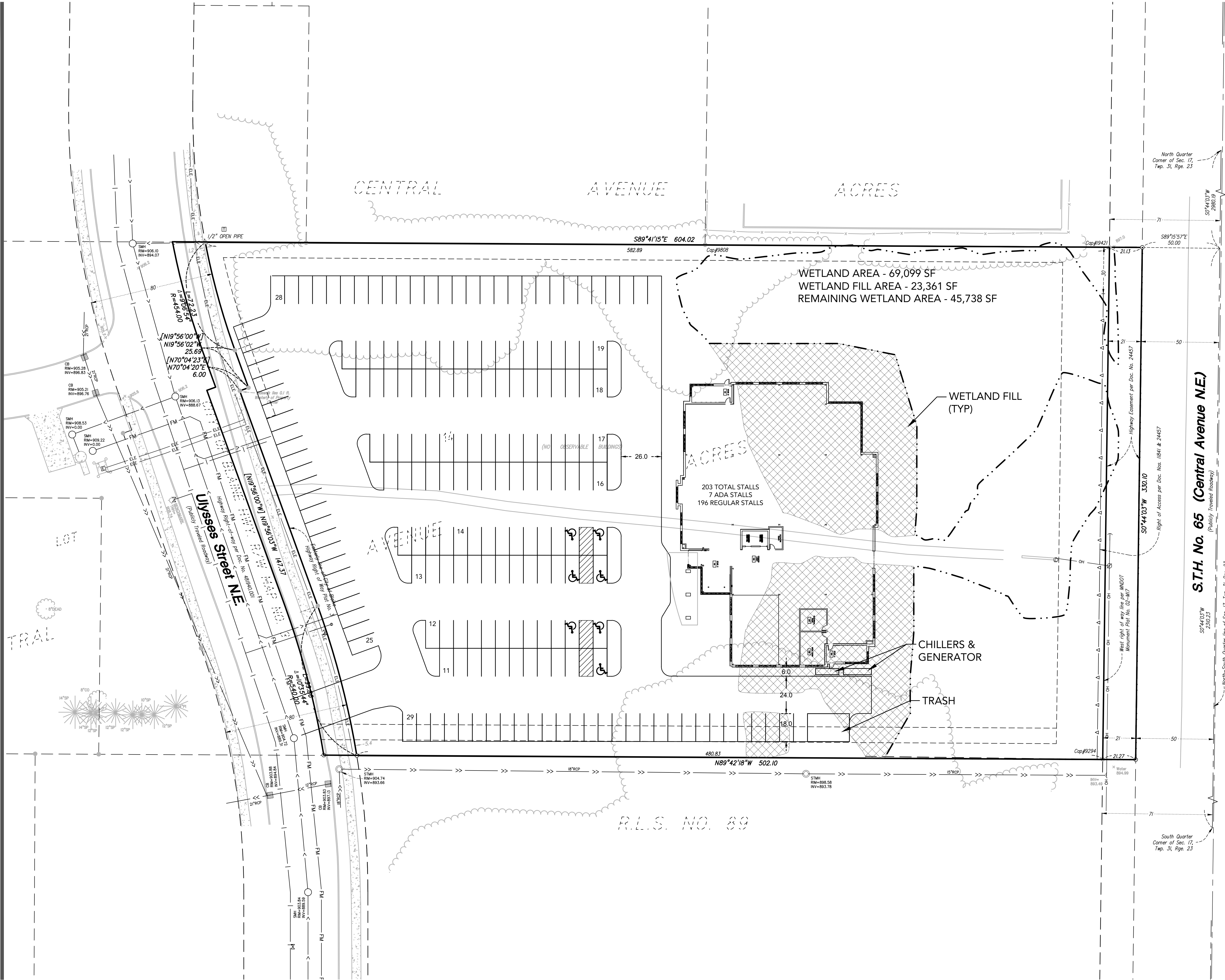


112th/Ulysses St NE Medical Office Discussion

Blaine Planning Department / 10801 Town Square Dr NE / Blaine, MN 55449 / (763) 785-6180





BLAINE MOB

BLAINE, MN

TWIN CITIES
ORTHOPEDICS

LOUCKS

PLANNING
CIVIL ENGINEERING
LAND SURVEYING
LANDSCAPE ARCHITECTURE
ENVIRONMENTAL

7200 Hemlock Lane, Suite 300
Maple Grove, MN 55369
763.424.5505
www.loucksinc.com

CADD QUALIFICATION

CADD files prepared by the Consultant for this project are instruments of the Consultant professional services for use solely with respect to this project. These CADD files shall not be used on other projects, for additions to this project, or for completion of this project by others without written approval by the Consultant. With the Consultant's approval, others may be permitted to obtain copies of the CADD drawing files for information and reference only. All intentional or unintentional revisions, additions, or deletions to these CADD files shall be made at the full risk of that party making such revisions, additions or deletions and that party shall hold harmless and indemnify the Consultant from any & all responsibilities, claims, and liabilities.

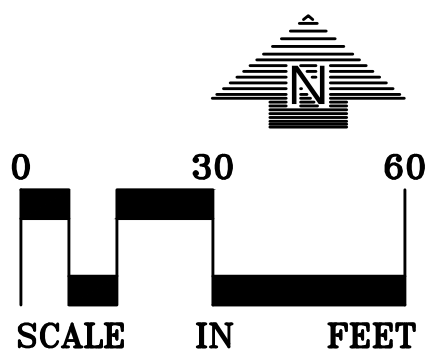
SUBMITTAL/REVISIONS

PROFESSIONAL SIGNATURE

QUALITY CONTROL

CONCEPT SITE
PLAN

1 OF 1





EAST ELEVATION



NORTH ELEVATION



SOUTH ELEVATION



WEST ELEVATION