

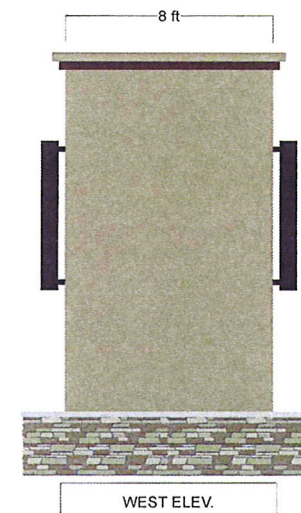
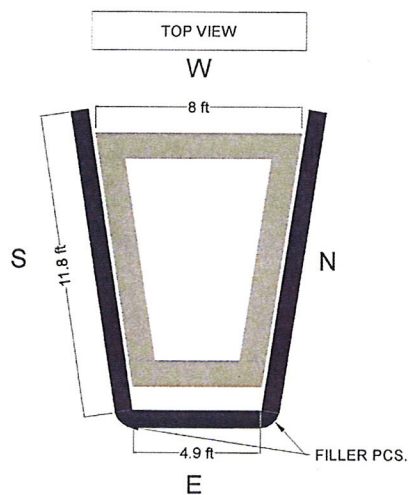
**Case File No. 13-0059**



Blaine Planning Department / 10801 Town Square Dr NE / Blaine, MN 55449 / (763) 785-6180







REMOVE & DISPOSE OF EXISTING



11775 Justen Circle, Maple Grove, MN  
PH: 763-428-5067 FAX: 763-428-5072

Don Kveton

CUENT

Village Bank

9298 Central Ave. NE

Blaine, MN 55343

JOB

ADDRESS

DATE 10/16/13

DRAWING # C5

X

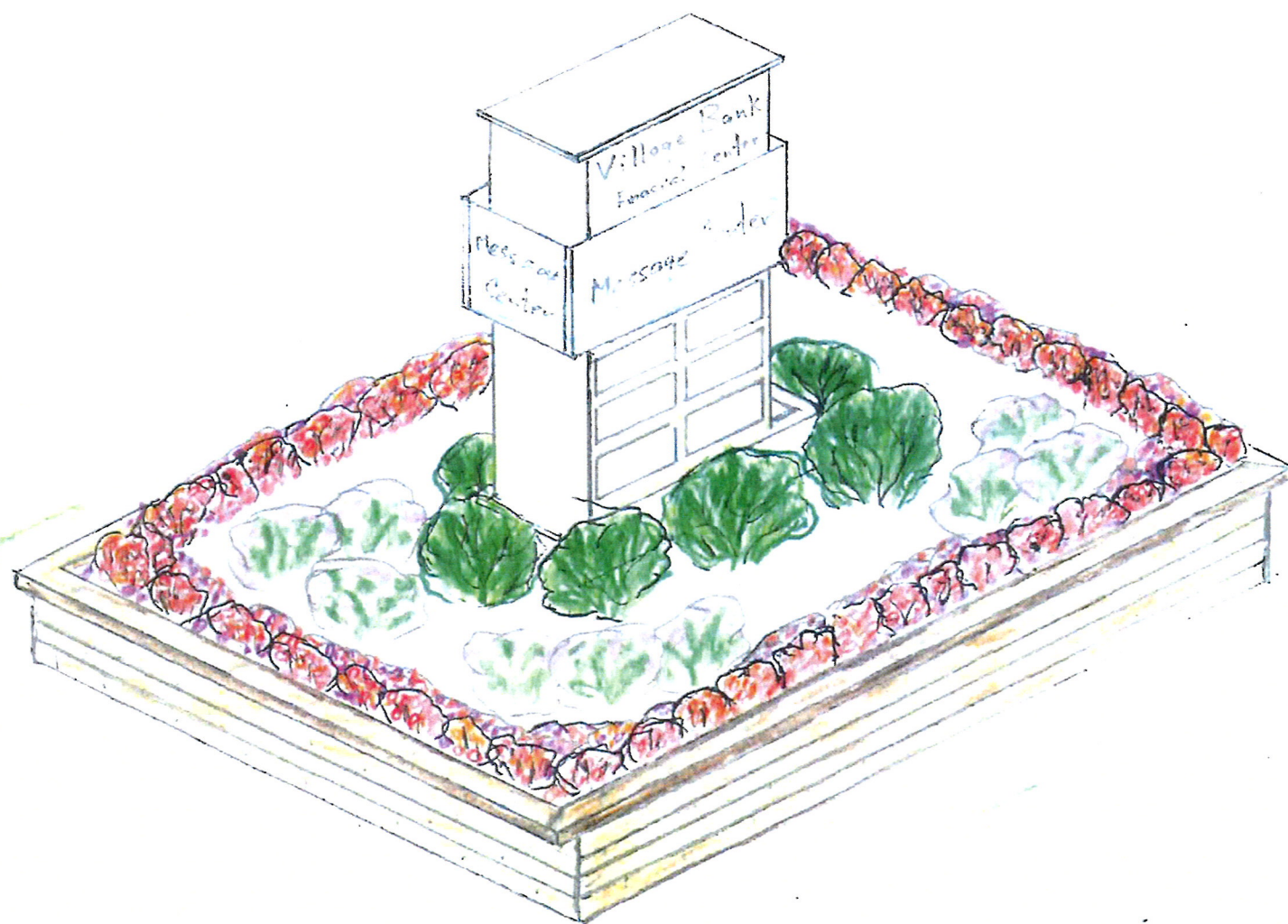
APPROVED BY

DATE

DESIGNER/SALESMAN

Kelly Gibbons

THESE PLANS ARE THE EXCLUSIVE PROPERTY OF TOP LINE ADV. THEY ARE SUBMITTED TO YOUR COMPANY FOR YOUR CONSIDERATION OF WHETHER TO PURCHASE THESE PLANS OR TO PURCHASE FROM TOP LINE ADV. A SIGN MANUFACTURED ACCORDING TO THESE PLANS, DISTRIBUTION OR EXHIBITION OF THESE PLANS TO CONSTRUCT A SIGN SIMILAR TO IS EXTREMELY FORBIDDEN. IN THE EVENT THAT SUCH EXHIBITION OCCURS, TOP LINE ADV. EXPECTS TO BE REIMBURSED \$1000 IN COMPENSATION FOR THE TIME AND EFFORT ENTIALED IN CREATING THESE PLANS.







***Top Line Advertising, Inc.***  
**Sign Manufacturing, Installation and Service**  
11775 Justen Circle, Maple Grove, MN 55369  
Office: 763-428-5067 Fax: 763-428-5072

October 11, 2013

City of Blaine  
10801 Town Square Drive NE, Blaine, MN 55449

RE: Village Bank Sign Variance

As Owner of Village Bank and D & N Management, I respectfully request the Planning Department's consideration for installation of a Reader Board Sign at the intersection of Hwy. 65 and Cloverleaf Parkway, slightly larger than the current dimension allowance. As the attached drawing shows, this will be an attractive, professionally landscaped structure that will enhance a well-traveled intersection of the City of Blaine, giving commuters a positive impression of our City. We also invite the City of Blaine to utilize this reader board for community announcements whenever feasible. I feel this sign is critical for directing traffic to our location on behalf of Village Bank and other tenants in this building. This reader board sign will provide optimal marketing for our tenants, as well as announcements for other community events. I do not feel this sign would be detrimental to other businesses in the area; in fact, this type of sign may increase customer traffic to businesses on both sides of Hwy. 65. Rather than construct two smaller monument signs as permitted by the City of Blaine, we are requesting only one sign slightly wider, which will not only be more cost-effective, but will take up less space along the highway corridor.

Don Kveton, D & N Management.

Top Line Adv. thinks one slightly larger sign on the corner of Clover Leaf Pkwy. & Hwy. 65 "The Gateway to the City" would have less clutter than two smaller signs displaying virtually the same message. Combining the two square footage totals is far less using one sign.

Respectfully,

Kelly Gibbons  
Top Line Advertising, Inc.