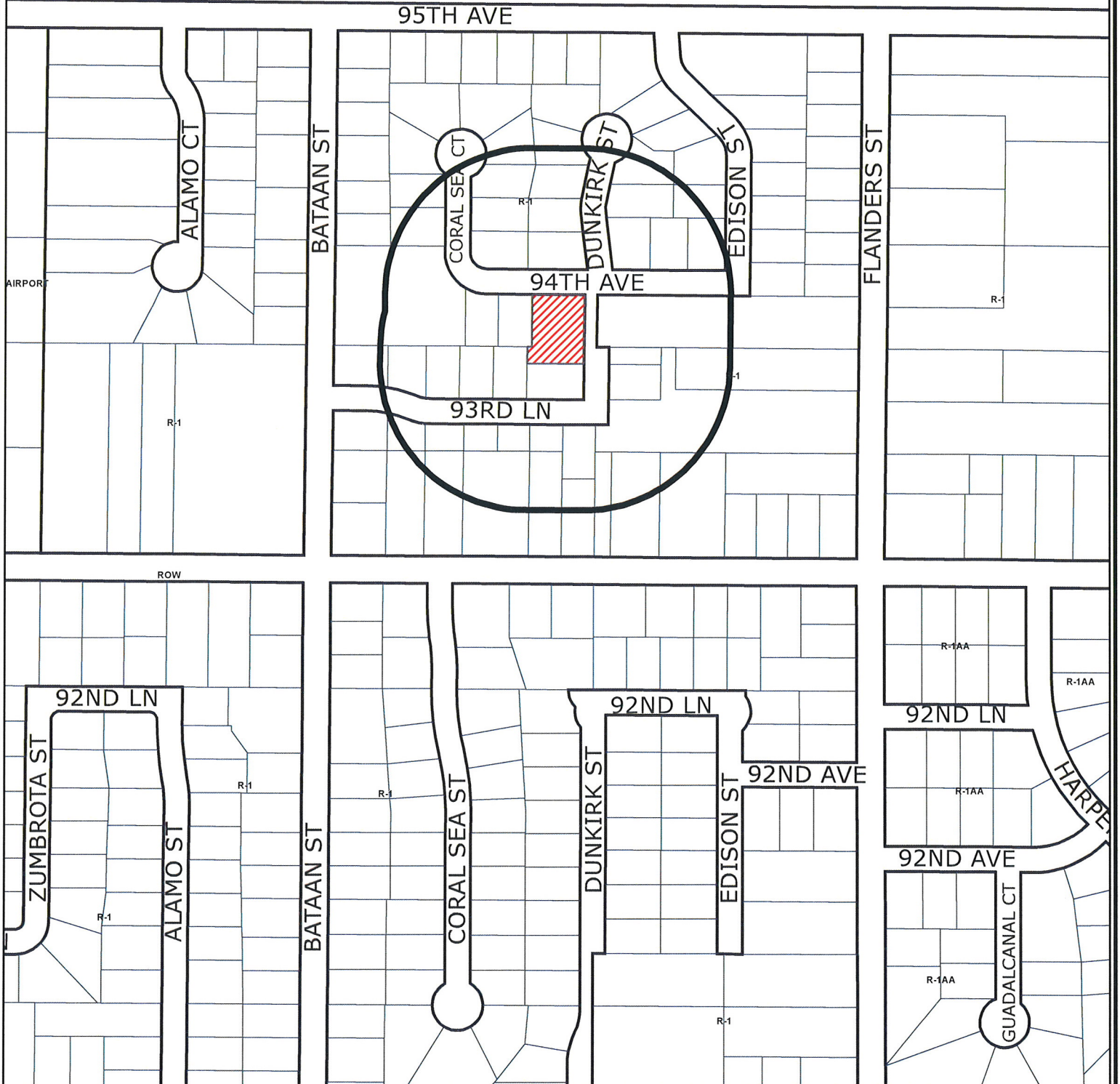


AIRPORT



Case File No. 17-0004
St. Clair Park 8th Addition

Blaine Planning Department / 10801 Town Square Dr NE / Blaine, MN 55449 / (763) 785-6180



PRELIMINARY COPY
PRINTED 1/13/17

ST. CLAIR PARK 8TH ADDITION

City of Blaine
County of Anoka
Sec. 27, T31, R23

KNOW ALL PERSONS BY THESE PRESENTS: That Boulder Contracting, LLC, a Minnesota limited liability company, owner of the following described property:

Outlot A, ST. CLAIR PARK 3RD ADDITION, Anoka County, Minnesota.

Has caused the same to be surveyed and platted as ST. CLAIR PARK 8TH ADDITION and does hereby dedicate to the public for public use the drainage and utility easements as shown by this plat.

In witness whereof said Boulder Contracting, LLC, a Minnesota limited liability company, has caused these presents to be signed by its proper officer this _____ day of _____, 20____.

BOULDER CONTRACTING, LLC

_____, as General Manager
Brian Jansen

STATE OF MINNESOTA
COUNTY OF _____

This instrument was acknowledged before me this _____ day of _____, 20____ by Brian Jansen, as General Manager of Boulder Contracting, LLC, a Minnesota limited liability company, on behalf of the limited liability company.

Notary Public, _____ County, Minnesota
My Commission Expires _____

I, Jason E. Rud, do hereby certify that this plat was prepared by me or under my direct supervision; that I am a duly Licensed Land Surveyor in the State of Minnesota; that this plat is a correct representation of the boundary survey; that all mathematical data and labels are correctly designated on this plat; that all monuments depicted on this plat have been, or will be correctly set within one year; that all water boundaries and wet lands, as defined in Minnesota Statutes, Section 505.01, Subd. 3, as of the date of this certificate are shown and labeled on this plat; and all public ways are shown and labeled on this plat.

Dated this _____ day of _____, 20____.

Jason E. Rud, Licensed Land Surveyor
Minnesota License No. 41578

STATE OF MINNESOTA
COUNTY OF _____

This instrument was acknowledged before me this _____ day of _____, 20____ by Jason E. Rud.

Notary Public, _____ County, Minnesota
My Commission Expires _____

City Council, City of Blaine, Minnesota

This plat of ST. CLAIR PARK 8TH ADDITION was approved and accepted by the City Council of the City of Blaine, Minnesota at a regular meeting thereof held this _____ day of _____, 20____, and said plat is in compliance with the provisions of Minnesota Statutes, Section 505.03, Subd. 2.

City Council, City of Blaine, Minnesota

By _____ Mayor

By _____ Clerk

County Surveyor

I hereby certify that in accordance with Minnesota Statutes, Section 505.021, Subd. 11, this plat has been reviewed and approved this _____ day of _____, 20____.

Larry D. Holm
Anoka County Surveyor

COUNTY AUDITOR/TREASURER

Pursuant to Minnesota Statutes, Section 505.021, Subd. 9, taxes payable in the year 20____ on the land hereinbefore described have been paid. Also, pursuant to Minnesota Statutes, Section 272.12, there are no delinquent taxes and transfer entered this _____ day of _____, 20____.

Property Tax Administrator

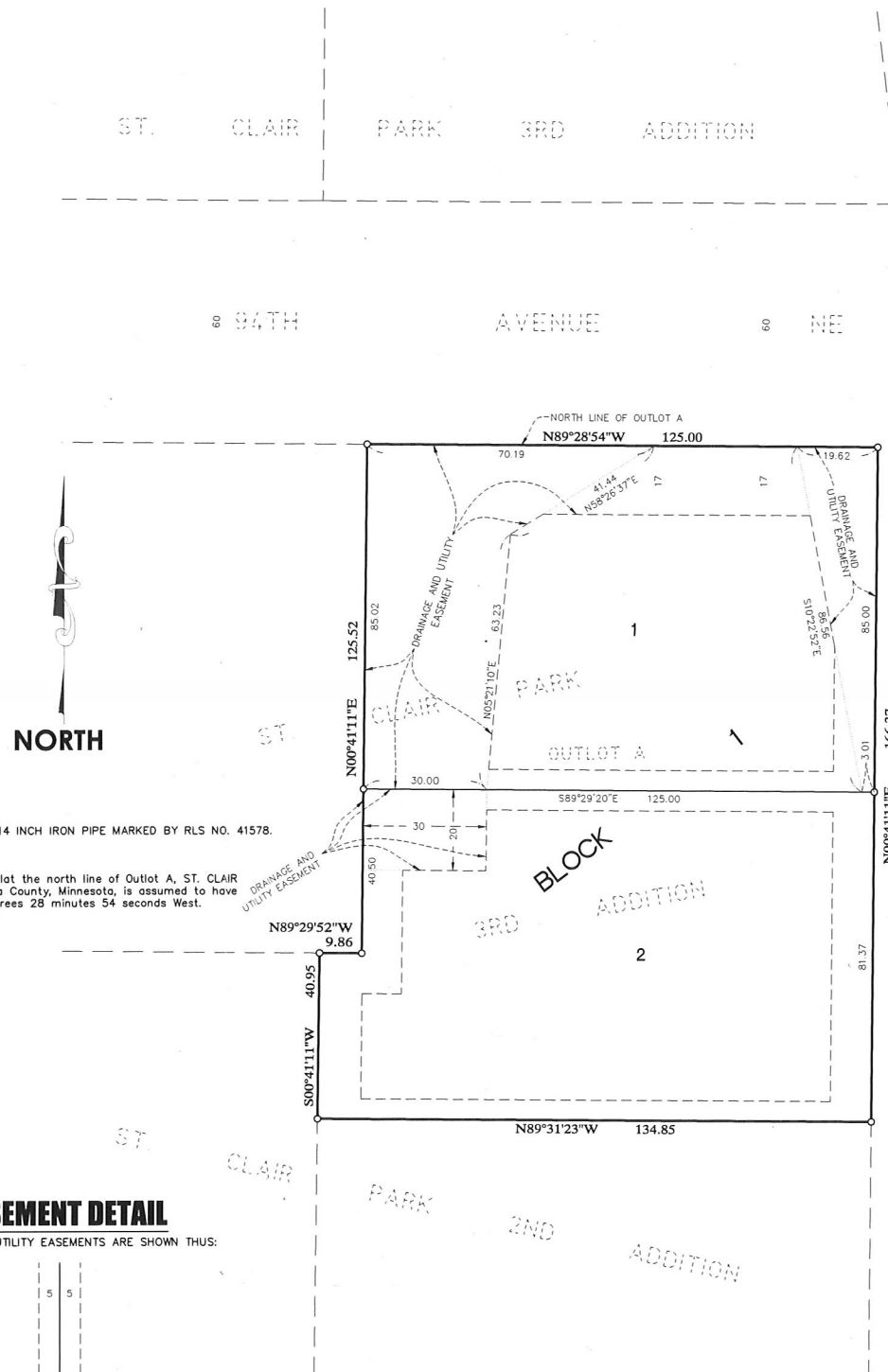
By _____ Deputy

COUNTY RECORDER/REGISTRAR OF TITLES
COUNTY OF ANOKA, STATE OF MINNESOTA

I hereby certify that this plat of ST. CLAIR PARK 8TH ADDITION was filed in the office of the County Recorder/Registrar of Titles for public record on this _____ day of _____, 20____, at _____ o'clock _____ M., and was duly recorded in Book _____ Page _____, as Document Number _____.

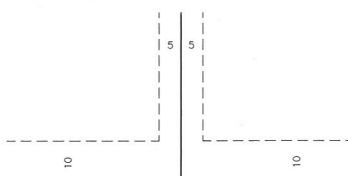
County Recorder/Registrar of Titles

By _____ Deputy



EASEMENT DETAIL

DRAINAGE AND UTILITY EASEMENTS ARE SHOWN THUS:



BEING 5 FEET IN WIDTH AND ADJOINING SIDE LOT LINES AND 10 FEET IN WIDTH AND ADJOINING STREET LINES AND REAR LOT LINES, UNLESS OTHERWISE SHOWN ON THIS PLAT.

GRAPHIC SCALE

