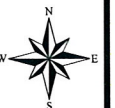
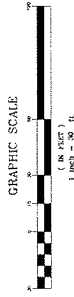
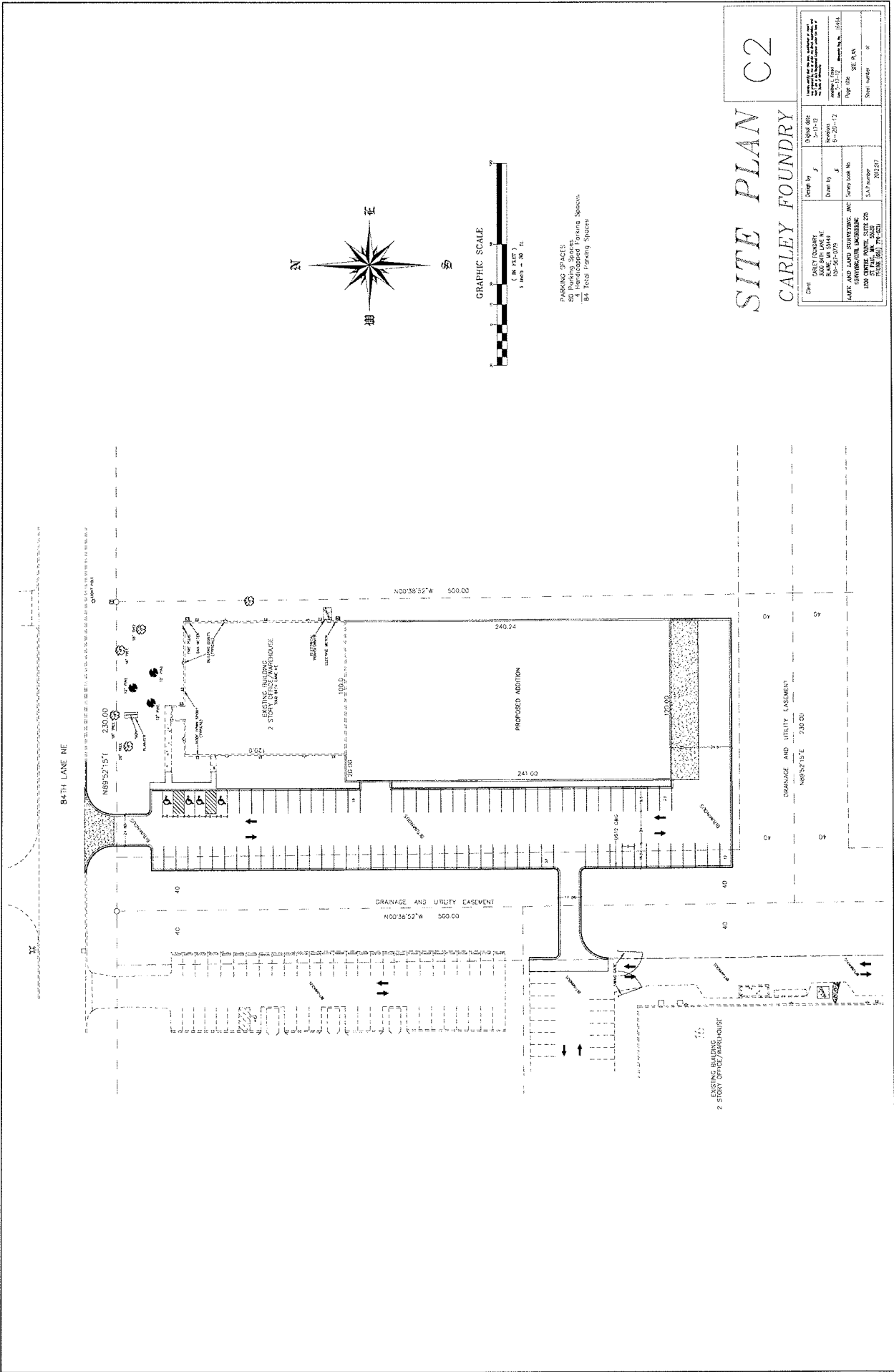


**Case File No. 12-0029**





PARKING SPACES:  
 50 Parking Spaces  
 4 Handicapped Parking Spaces  
 84 Total Parking Spaces

# SITE PLAN C2

## CARLEY FOUNDRY

Client	Carley Foundry	Project No.	2012-017
Site	500 BATH LANE NE BUNKER, MN 55009	Drawn by	J. K.
Scale	AS SHOWN	Check by	J. K.
Project	EXISTING AND PROPOSED BUILDING 1000 SQUARE FEET, 2-STORY UTILITY WAREHOUSE 1000 SQUARE FEET, 2-STORY UTILITY WAREHOUSE	Sheet No.	01
Drawn by	J. K.	Sheet Name	01
Check by	J. K.	Scale	AS SHOWN
Project No.	2012-017	Project Name	01



