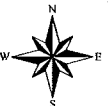


Case File No. 13-0048



HENNUM MEADOWS NORTH

City of Blaine
County of Anoka
Sec. 19, T31, R1

KNOW ALL PERSONS BY THESE PRESENTS: That Summit Land Development, LLC, a Minnesota limited liability company, owner and that Community Pride Bank, a Minnesota banking corporation, mortgagee of the following described property:

The North One-Half of Lot 18, GREEN ACRES ADDITION, Anoka County, Minnesota.

Have caused the same to be surveyed and plotted as HENNUM MEADOWS NORTH and do hereby dedicate to the public for public use the public ways and the drainage and utility easements as shown by this plat.

In witness whereof said Summit Land Development, LLC, a Minnesota limited liability company, has caused these presents to be signed by its proper officer this _____ day of _____, 20____.

Summit Land Development, LLC

Chief Manager

STATE OF MINNESOTA
COUNTY OF _____

This instrument was acknowledged before me this _____ day of _____, 20____, by David C. Erickson, Chief Manager of Summit Land Development, LLC, a Minnesota limited liability company.

Notary Public, _____ County, Minnesota
My Commission Expires _____

In witness whereof said Community Pride Bank, a Minnesota banking corporation, has caused these presents to be signed by its proper officer this _____ day of _____, 20____.

Community Pride Bank

Executive Vice President

STATE OF MINNESOTA
COUNTY OF _____

This instrument was acknowledged before me this _____ day of _____, 20____, by Tyler M. Messerole, Executive Vice President of Community Pride Bank, a Minnesota banking corporation.

Notary Public, _____ County, Minnesota
My Commission Expires _____

I, James E. Nopler, do hereby certify that this plat was prepared by me or under my direct supervision; that I am a duly Licensed Land Surveyor in the State of Minnesota; that this plat is a correct representation of the boundary survey; that all mathematical data and labels are correctly designated on this plat; that all monuments depicted on this plat have been, or will be correctly set within one year; that all water boundaries and wet lands, as defined in Minnesota Statutes, Section 505.01, Subd. 3, as of the date of this certificate are shown and labeled on this plat; and all public ways are shown and labeled on this plat.

Dated this _____ day of _____, 20____.

James E. Nopler, Licensed Land Surveyor
Minnesota License No. 25343

STATE OF MINNESOTA
COUNTY OF _____

This instrument was acknowledged before me this _____ day of _____, 20____, by James E. Nopler.

Notary Public, _____ County, Minnesota
My Commission Expires _____

City Council, City of Blaine, Minnesota

This plat of HENNUM MEADOWS NORTH was approved and accepted by the City Council of the City of Blaine, Minnesota at a regular meeting thereof held this _____ day of _____, 20____, and said plat is in compliance with the provisions of Minnesota Statutes, Section 505.03, Subd. 2.

City Council, City of Blaine, Minnesota

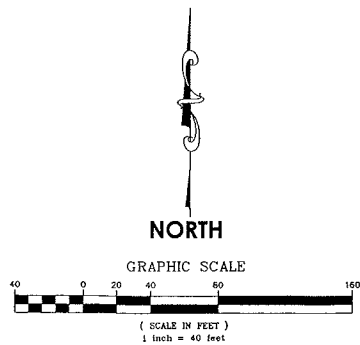
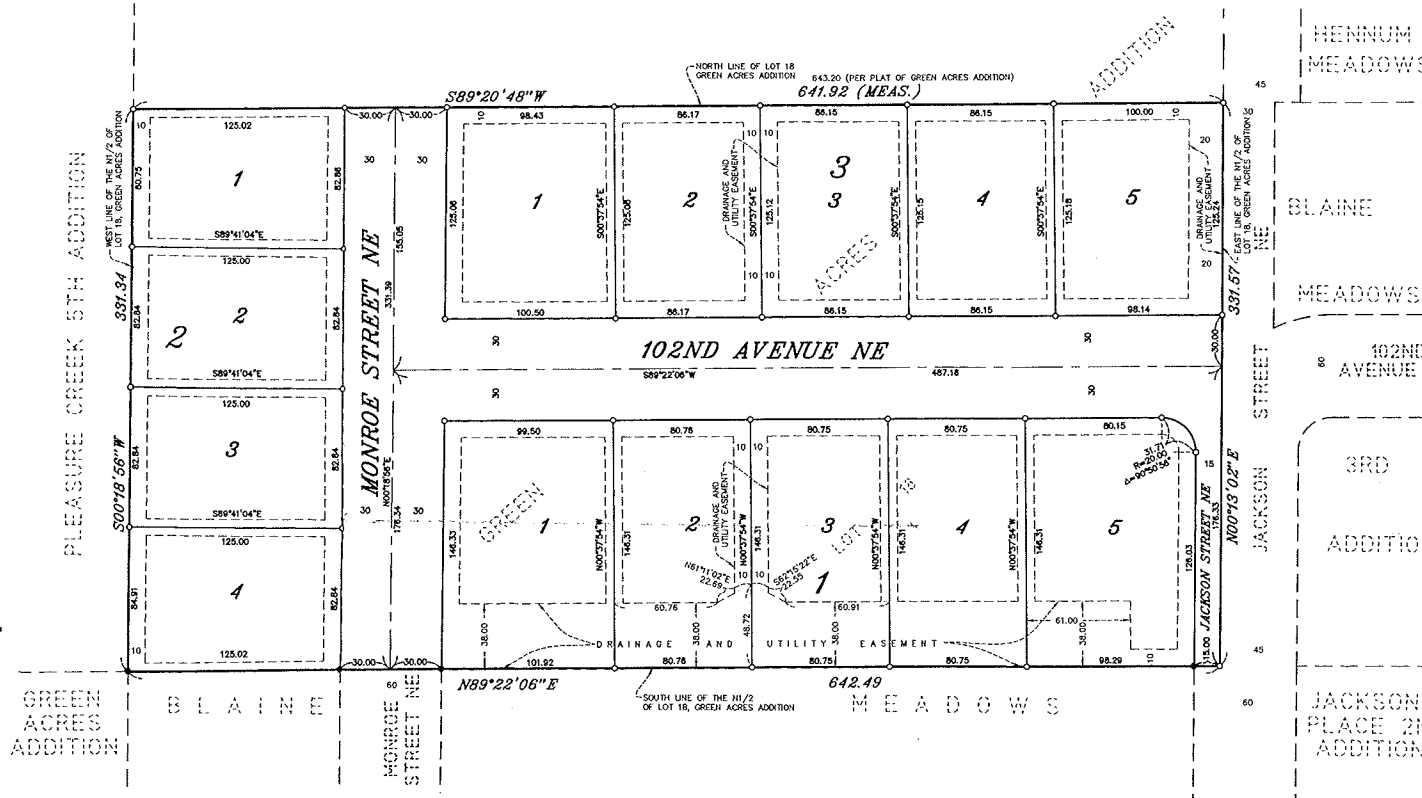
By _____ Mayor

By _____ Clerk

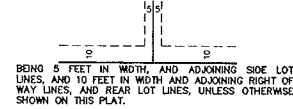
County Surveyor

I hereby certify that in accordance with Minnesota Statutes, Section 505.021, Subd. 11, this plat has been reviewed and approved this _____ day of _____, 20____.

Larry D. Holm
Anoka County Surveyor



DRAINAGE AND UTILITY EASEMENTS ARE SHOWN THUS:



- DENOTES 1/2 INCH BY 14 INCH IRON PIPE MARKED BY RLS NO. 25343.
- DENOTES FOUND IRON MONUMENT

FOR THE PURPOSES OF THIS PLAT THE NORTH LINE OF LOT 18 OF GREEN ACRES ADDITION IS ASSUMED TO HAVE A BEARING OF SOUTH 89 DEGREES 20 MINUTES 48 SECONDS WEST.

E. G. RUD & SONS, INC.
EST. 1977 Professional Land Surveyors