

Case File No. 17-0052
Blaine Elementary School

Blaine Planning Department / 10801 Town Square Dr NE / Blaine, MN 55449 / (763) 785-6180



ANOKA HENNEPIN 3RD ADDITION

CITY OF BLAINE
COUNTY OF ANOKA
SEC. 1, T. 31, R. 23

KNOW ALL PERSONS BY THESE PRESENTS: That Anoka Hennepin Independent School District No. 11, a Political Subdivision, State of Minnesota, owner of the following described property:

The Southeast Quarter of the Southwest Quarter of Section 1, Township 31, Range 23, Anoka County, Minnesota.

Has caused the same to be surveyed and platted as ANOKA HENNEPIN 3RD ADDITION and does hereby dedicate to the public for public use the public ways and the drainage and utility easements as created by this plat.

In witness whereof said Anoka-Hennepin Independent School District No. 11, a Political Subdivision, State of Minnesota, has caused these presents to be signed by its proper officers this _____ day of _____, 20____.

SIGNED: Anoka-Hennepin Independent School District No. 11

as _____

as _____

STATE OF MINNESOTA

COUNTY OF _____

This instrument was acknowledged before me on _____ day of _____, 20____ by _____, and _____ of Anoka-Hennepin Independent School District No. 11, a Political Subdivision, State of Minnesota, on behalf of the Subdivision.

Notary Public, _____ County, Minnesota
My Commission Expires _____

I Arlee J. Carlson, do hereby certify that this plat was prepared by me or under my direct supervision; that I am a duly Licensed Land Surveyor in the State of Minnesota; that this plat is a correct representation of the boundary survey; that all mathematical data and labels are correctly designated on this plat; that all monuments depicted on this plat have been, or will be correctly set within one year; that all water boundaries and wet lands, as defined in Minnesota Statutes, Section 505.01, Subd. 3, as of the date of this certificate are shown and labeled on this plat; and all public ways are shown and labeled on this plat.

Dated this _____ day of _____, 20____.

Arlee J. Carlson, Licensed Land Surveyor
Minnesota License No. 44900

STATE OF MINNESOTA

COUNTY OF _____

This instrument was acknowledged before me this _____ day of _____, 20____, by Arlee J. Carlson.

Notary Public, _____ County, _____
My Commission Expires _____

CITY COUNCIL, CITY OF BLAINE, MINNESOTA

This plat of ANOKA HENNEPIN 3RD ADDITION was approved and accepted by the City Council of the City of Blaine, Minnesota at a regular meeting thereof held this _____ day of _____, 20____, and said plat is in compliance with the provisions of Minnesota Statutes, Section 505.03, Subd. 2.

City Council, City of Blaine, Minnesota

By: _____, Mayor By: _____, Clerk

ANOKA COUNTY SURVEYOR

I hereby certify that in accordance with Minnesota Statutes, Section 505.021, Subd. 11, this plat has been reviewed and approved this _____ day of _____, 20____.

Larry D. Holm
Anoka County Surveyor

ANOKA COUNTY AUDITOR/TREASURER

Pursuant to Minnesota Statutes, Section 505.021, Subd. 9, taxes payable in the year 20____ on the land hereinbefore described have been paid. Also, pursuant to Minnesota Statutes, Section 272.12, there are no delinquent taxes and transfer entered this _____ day of _____, 20____.

Property Tax Administrator

By _____, Deputy

ANOKA COUNTY RECORDER/REGISTRAR OF TITLES

County of Anoka, State of Minnesota

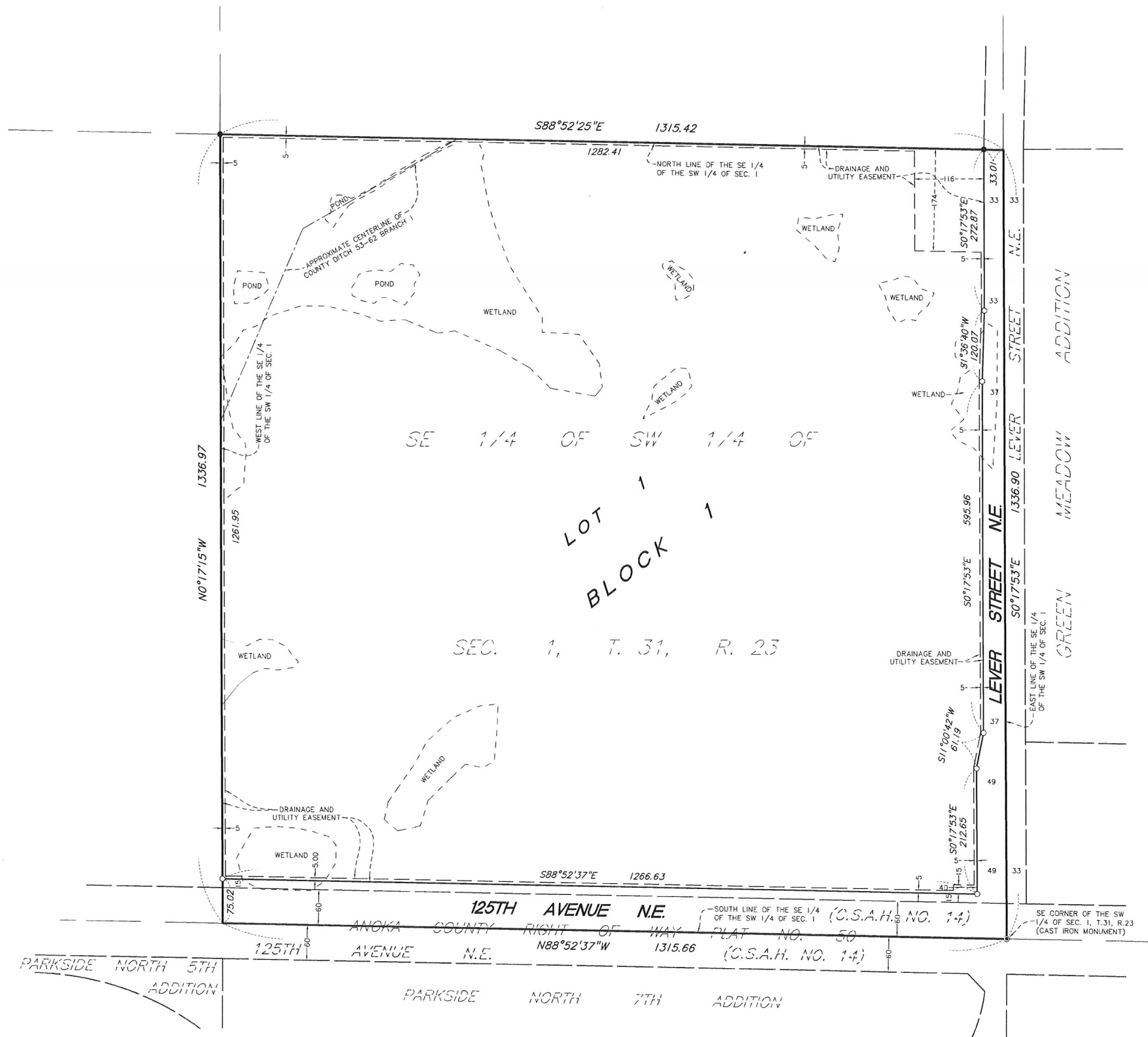
I hereby certify that this plat of ANOKA HENNEPIN 3RD ADDITION was filed in the office of the County Recorder/Registrar of Titles for public record on this _____ day of _____, 20____, at _____ o'clock _____M. and was duly recorded as Document Number _____.

County Recorder/Registrar of Titles

By _____, Deputy

ANOKA HENNEPIN 3RD ADDITION

CITY OF BLAINE
 COUNTY OF ANOKA
 SEC. 1, T. 31, R. 23



- DENOTES ANOKA COUNTY CAST IRON MONUMENT
- DENOTES 1/2 INCH BY 16 INCH IRON PIPE WITH PLASTIC CAP INSCRIBED PLS 44900
- DENOTES FOUND IRON MONUMENT MARKED WITH RLS 41578, UNLESS OTHERWISE NOTED.

FOR THE PURPOSES OF THIS PLAT, THE SOUTH LINE OF THE SW 1/4 OF SECTION 1, TOWNSHIP 31, RANGE 23 IS ASSUMED TO HAVE A BEARING OF NORTH 88 DEGREES 52 MINUTES 37 SECONDS WEST

