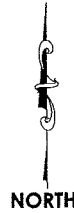


Case File No. 13-0005



# MARQUEST MEADOWS EAST



KNOW ALL PERSONS BY THESE PRESENTS: That G & G Land Development, LLC, a Minnesota limited liability company, owner of the following described property:

The east one-half (E1/2) of Lot Sixty (60), Spring Lake Park Woodland; according to the Plat thereof on file in the office of the Registrar of Titles, Anoka County, Minnesota.

Has caused the same to be surveyed and plotted as MARQUEST MEADOWS EAST and does hereby dedicate to the public for public use the drainage and utility easements as shown by this plat.

In witness whereof said G & G Land Development, LLC, a Minnesota limited liability company, has caused these presents to be signed by its proper officer this \_\_\_\_\_ day of \_\_\_\_\_, 20\_\_\_\_  
SHADOW PONDS, LLC

\_\_\_\_\_, as Chief Manager  
Gregory E. Knutson

STATE OF MINNESOTA  
COUNTY OF \_\_\_\_\_  
This instrument was acknowledged before me this \_\_\_\_\_ day of \_\_\_\_\_, 20\_\_\_\_ by Gregory E. Knutson, as Chief Manager of G & G Land Development, LLC, a Minnesota limited liability company.

Notary Public, \_\_\_\_\_ County, Minnesota  
My Commission Expires \_\_\_\_\_

I, James E. Napier, do hereby certify that this plat was prepared by me or under my direct supervision; that I am a duly Licensed Land Surveyor in the State of Minnesota; that this plat is a correct representation of the boundary survey; that all mathematical data and labels are correctly designated on this plat; that all monuments depicted on this plat have been, or will be correctly set within one year, that all corner boundaries and lot lines, as defined in Minnesota Statutes, Section 505.01, Subd. 3, as of the date of this certificate are shown and labeled on this plat; and all public ways are shown and labeled on this plat.

Dated this \_\_\_\_\_ day of \_\_\_\_\_, 20\_\_\_\_.

James E. Napier, Licensed Land Surveyor  
Minnesota License No. 25343

STATE OF MINNESOTA  
COUNTY OF \_\_\_\_\_  
This instrument was acknowledged before me this \_\_\_\_\_ day of \_\_\_\_\_, 20\_\_\_\_ by James E. Napier.

Notary Public, \_\_\_\_\_ County, Minnesota  
My Commission Expires \_\_\_\_\_

City Council, City of Blaine, Minnesota

This plat of MARQUEST MEADOWS EAST was approved and accepted by the City Council of the City of Blaine, Minnesota at a regular meeting thereof held this \_\_\_\_\_ day of \_\_\_\_\_, 20\_\_\_\_ and said plat is in compliance with the provisions of Minnesota Statutes, Section 505.03, Subd. 2.

City Council, City of Blaine, Minnesota

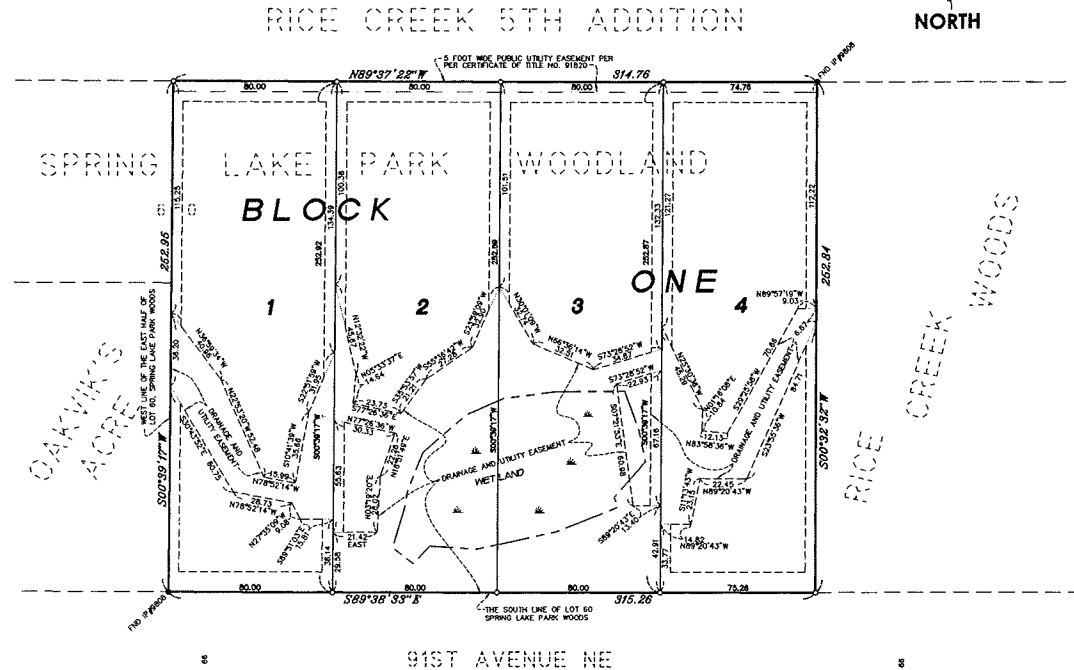
By \_\_\_\_\_ Mayor

By \_\_\_\_\_ Clerk

County Surveyor

I hereby certify that in accordance with Minnesota Statutes, Section 505.021, Subd. 11, this plat has been reviewed and approved this day of \_\_\_\_\_, 20\_\_\_\_.

Larry D. Holm  
Anoka County Surveyor



- DENOTES 3/8 INCH BY 14 INCH IRON PIPE MARKED BY RLS NO. 25343.
- DENOTES FOUND IRON MONUMENT

FOR THE PURPOSES OF THIS PLAT THE SOUTH LINE OF LOT 60, SPRING LAKE PARK WOODLAND IS ASSUMED TO HAVE A BEARING OF SOUTH 89 DEGREES 38 MINUTES 33 SECONDS EAST.

DRAINAGE AND UTILITY EASEMENTS ARE SHOWN THUS:



BEING 5 FEET IN WIDTH AND ADJOINING SIDE LOT LINES, AND 10 FEET IN WIDTH AND ADJOINING RIGHT OF WAY LINES, AND REAR LOT LINES, UNLESS OTHERWISE SHOWN ON THIS PLAT.

