

THE LAKES OF RADISSON FIFTY-FIFTH ADDITION

CITY OF BLAINE
COUNTY OF ANOKA
SEC. 10, T. 31, R. 23

KNOW ALL PERSONS BY THESE PRESENTS: Centra Homes, LLC, a Minnesota limited liability company, owner of the following described property:

Lots 1, 2, and 5 thru 8 inclusive, Block 1, THE LAKES OF RADISSON FORTIETH ADDITION, Lots 1-19, THE LAKES OF RADISSON FORTY-FOURTH ADDITION, and Outlot A, CHAIN OF LAKES ADDITION, according to the recorded plats thereof Anoka County, Minnesota.

Has caused the same to be surveyed and platted as THE LAKES OF RADISSON FIFTY-FIFTH ADDITION and does hereby dedicate to the public for public use forever the drainage and utility easements as shown on this plat.

In witness whereof said Centra Homes, LLC, a Minnesota limited liability company, has caused these presents to be signed by its proper officer this ____ day of _____, 20____.

CENTRA HOMES, LLC

STATE OF MINNESOTA

COUNTY OF _____

This instrument was acknowledged before me this ____ day of _____, 20____ by _____, as _____ of Centra Homes, LLC, a Minnesota limited liability company, on behalf of the company.

Notary Public, _____ County, Minnesota

My Commission Expires _____

I Peter J. Hawkinson do hereby certify that this plat was prepared by me or under my direct supervision; that I am a duly Licensed Land Surveyor in the State of Minnesota; that this plat is a correct representation of the boundary survey; that all mathematical data and labels are correctly designated on this plat; that all monuments depicted on this plat have been, or will be correctly set within one year; that all water boundaries and wet lands, as defined in Minnesota Statutes, Section 505.01, Subd. 3, as of the date of this certificate are shown and labeled on this plat; and all public ways are shown and labeled on this plat.

Peter J. Hawkinson, Licensed Land Surveyor

Minnesota License Number 42299

STATE OF MINNESOTA

COUNTY OF _____

This instrument was acknowledged before me this ____ day of _____, 20____ by Peter J. Hawkinson.

Notary Public, _____ County, Minnesota

My Commission Expires _____

CITY COUNCIL, CITY OF BLAINE, MINNESOTA

This plat of THE LAKES OF RADISSON FIFTY-FIFTH ADDITION was approved and accepted by the City Council of the City of Blaine, Minnesota, at a regular meeting thereof held this ____ day of _____, 20____, and said plat is in compliance with the provisions of Minnesota Statutes, Section 505.03, Subd. 2.

By: _____, Mayor

By: _____, Clerk

COUNTY SURVEYOR

I hereby certify that in accordance with Minnesota Statutes, Section 505.021, Subd. 11, this plat has been reviewed and approved this ____ day of _____, 20____.

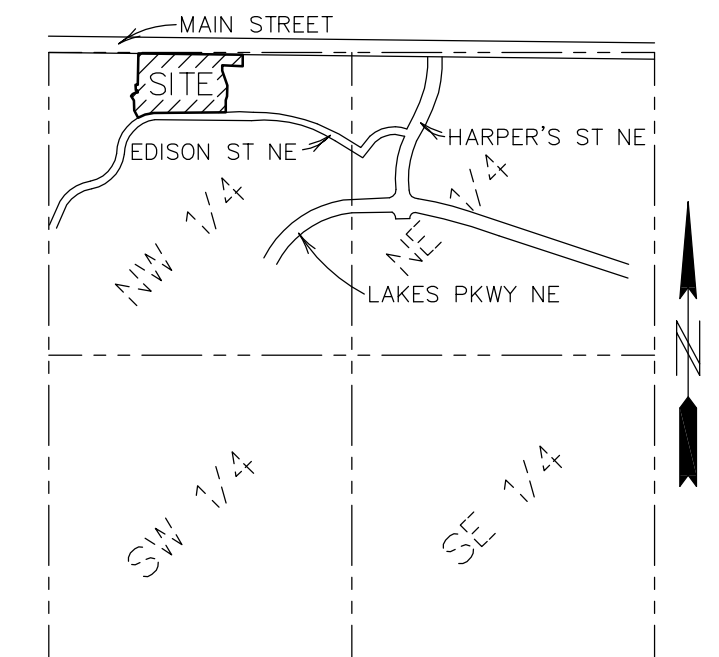
By: _____

Larry D. Hoium, Anoka County Surveyor

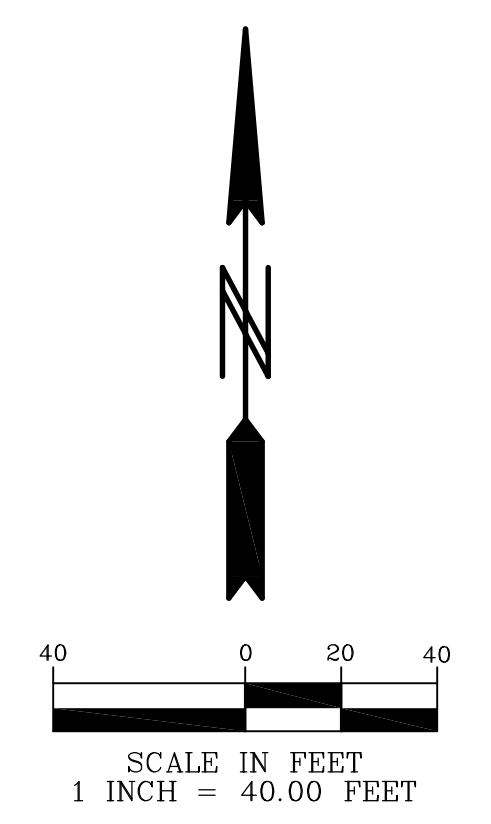
THE LAKES OF RADISSON FIFTY-FIFTH ADDITION

CITY OF BLAINE
COUNTY OF ANOKA
SEC. 10, T. 31, R. 23

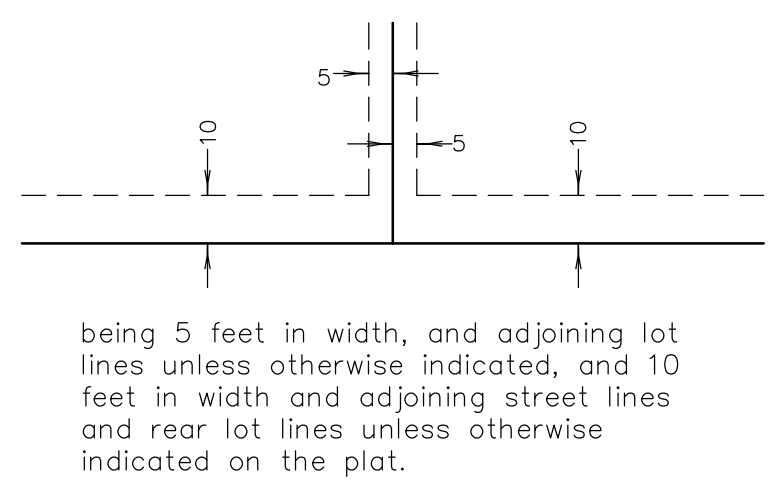
ANOKA COUNTY HIGHWAY RIGHT-OF-WAY PLAT NO. 46
MAIN STREET
(C.S.A.H. NO. 14)



SECTION 10, TWP. 31, RGE. 23
LOCATION MAP
NO SCALE



DRAINAGE AND UTILITY EASEMENTS ARE SHOWN THUS:



BEARINGS ARE BASED ON THE NORTH LINE OF LAKES OF RADISSON FORTIETH ADDITION, WHICH IS ASSUMED TO HAVE A BEARING OF SOUTH 89°02'26" EAST.

NO MONUMENT SHOWN AT ANY STATION - REQUIRED - LOCATION, INDICATES A PLAT MONUMENT THAT WILL BE SET AND WHICH SHALL BE IN PLACE WITHIN ONE YEAR OF THE FILING OF THE PLAT. SAID MONUMENTS SHALL BE 1/2 INCH X 1/4 INCH IRON MONUMENTS MARKED BY LICENSE NUMBER 19828.

- DENOTES FOUND IRON MONUMENT.
- △ DENOTES RESTRICTED ACCESS TO DAKOTA COUNTY PER THE RECORDED PLAT OF STONEHAVEN 1ST ADDITION

