

Case File No. 13-0013



PRELIMINARY COPY  
UNRECORDED AS OF 7-11-13

# MARQUEST MEADOWS NORTH

City of Blaine  
County of Anoka  
Sec. 3, T31, R23

KNOW ALL PERSONS BY THESE PRESENTS: That Gregory E. Knutson, a single person, owner and Central Bank, a Minnesota corporation, mortgagee of the following described property:

The South 330 feet of the Northwest Quarter of the Southeast Quarter of Section 3, Township 31, Range 23, Anoka County, Minnesota, except the East 660 feet thereof.

Have caused the same to be surveyed and plotted as MARQUEST MEADOWS NORTH and do hereby dedicate to the public for public use the public ways and the drainage and utility easements as shown by this plat.

In witness whereof said Gregory E. Knutson, a single person, has hereunto set his hand this \_\_\_\_\_ day of \_\_\_\_\_ 20\_\_\_\_.

Gregory E. Knutson

STATE OF MINNESOTA  
COUNTY OF \_\_\_\_\_

This instrument was acknowledged before me this \_\_\_\_\_ day of \_\_\_\_\_, 20\_\_\_\_, by Gregory E. Knutson, a single person.

Notary Public, \_\_\_\_\_ County, Minnesota  
My Commission Expires \_\_\_\_\_

In witness whereof said Central Bank, a Minnesota corporation, has caused these presents to be signed by its proper officer this \_\_\_\_\_ day of \_\_\_\_\_, 20\_\_\_\_.

Signed: Central Bank

STATE OF MINNESOTA  
COUNTY OF \_\_\_\_\_

This instrument was acknowledged before me this \_\_\_\_\_ day of \_\_\_\_\_, 20\_\_\_\_, by \_\_\_\_\_ of Central Bank, a Minnesota corporation.

Notary Public, \_\_\_\_\_ County, Minnesota  
My Commission Expires \_\_\_\_\_

I, James E. Nopler, do hereby certify that this plat was prepared by me or under my direct supervision; that I am a duly Licensed Land Surveyor in the State of Minnesota; that this plat is a correct representation of the boundary survey; that all mathematical data and labels are correctly designated on this plat; that all monuments depicted on this plat have been, or will be correctly set within one year; that all water boundaries and wet lands, as defined in Minnesota Statutes, Section 505.01, Subd. 1, as of the date of this certificate are shown and labeled on this plat; and all public ways are shown and labeled on this plat.

Dated this \_\_\_\_\_ day of \_\_\_\_\_, 20\_\_\_\_.

James E. Nopler, Licensed Land Surveyor  
Minnesota License No. 25343

STATE OF MINNESOTA  
COUNTY OF \_\_\_\_\_

This instrument was acknowledged before me this \_\_\_\_\_ day of \_\_\_\_\_, 20\_\_\_\_, by James E. Nopler.

Notary Public, \_\_\_\_\_ County, Minnesota  
My Commission Expires \_\_\_\_\_

City Council, City of Blaine, Minnesota

This plat of MARQUEST MEADOWS NORTH was approved and accepted by the City Council of the City of Blaine, Minnesota at a regular meeting thereof held this \_\_\_\_\_ day of \_\_\_\_\_, 20\_\_\_\_, and said plat is in compliance with the provisions of Minnesota Statutes, Section 505.03, Subd. 2.

City Council, City of Blaine, Minnesota

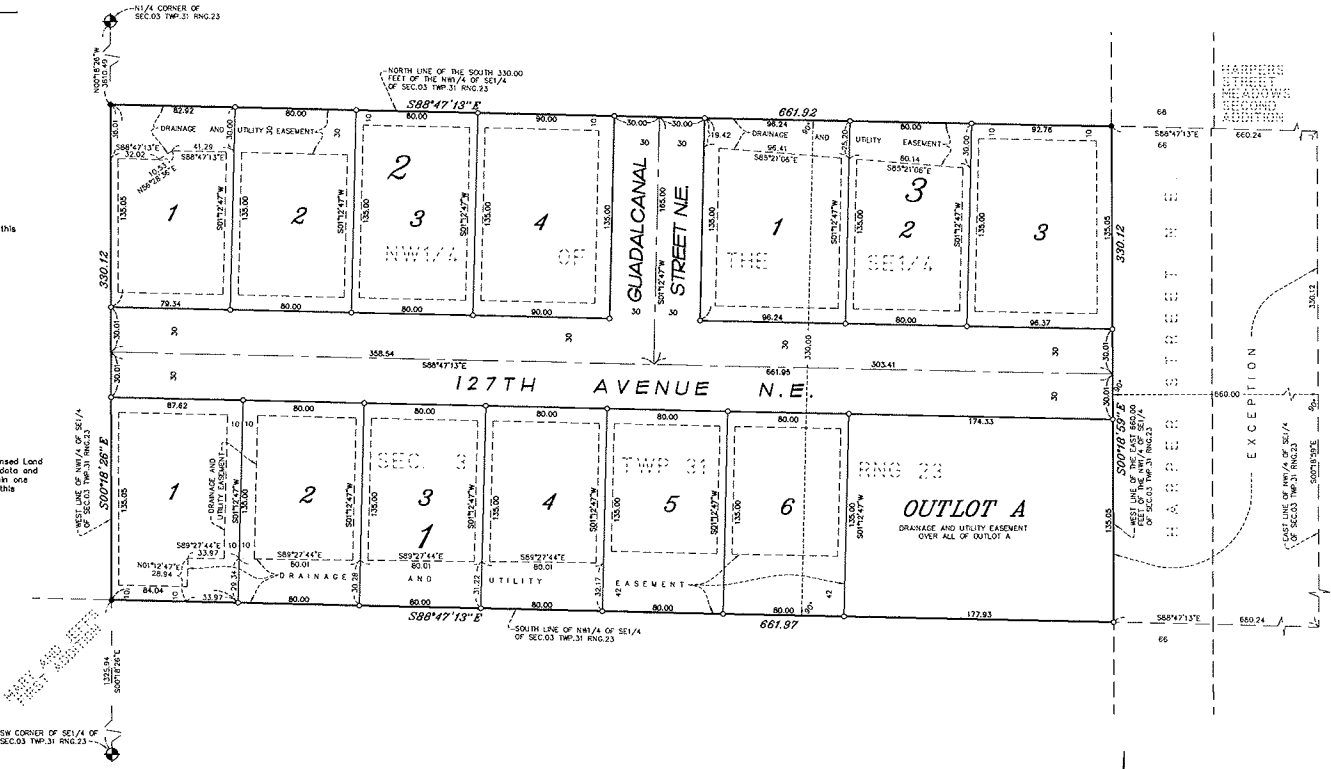
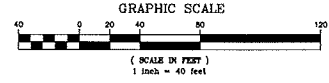
By \_\_\_\_\_ Mayor

By \_\_\_\_\_ Clerk

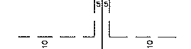
County Surveyor

I hereby certify that in accordance with Minnesota Statutes, Section 505.021, Subd. II, this plat has been reviewed and approved this \_\_\_\_\_ day of \_\_\_\_\_, 20\_\_\_\_.

Larry D. Holm  
Anoka County Surveyor



DRAINAGE AND UTILITY EASEMENTS ARE SHOWN THUS:



BENCH 5 FEET IN WIDTH AND ADJOINING SIDE LOT LINES, AND 10 FEET IN WIDTH AND ADJOINING RIGHT OF WAY LINES, AND REAR LOT LINES, UNLESS OTHERWISE SHOWN ON THIS PLAT.

- DENOTES 3/4 INCH BY 1/4 INCH IRON PIPE MARKED BY RLS NO. 25343.
- DENOTES FOUND IRON MONUMENT
- ◆ DENOTES ANOKA COUNTY CAST IRON MONUMENT

FOR THE PURPOSES OF THIS PLAT THE WEST LINE OF THE NORTHWEST QUARTER OF THE SOUTHEAST QUARTER OF SECTION 3, TOWNSHIP 31, RANGE 23 IS ASSUMED TO HAVE A BEARING OF SOUTH 00 DEGREES 16 MINUTES 26 SECONDS EAST.

NORTH

**E. G. RUD & SONS, INC.**  
Professional Land Surveyors