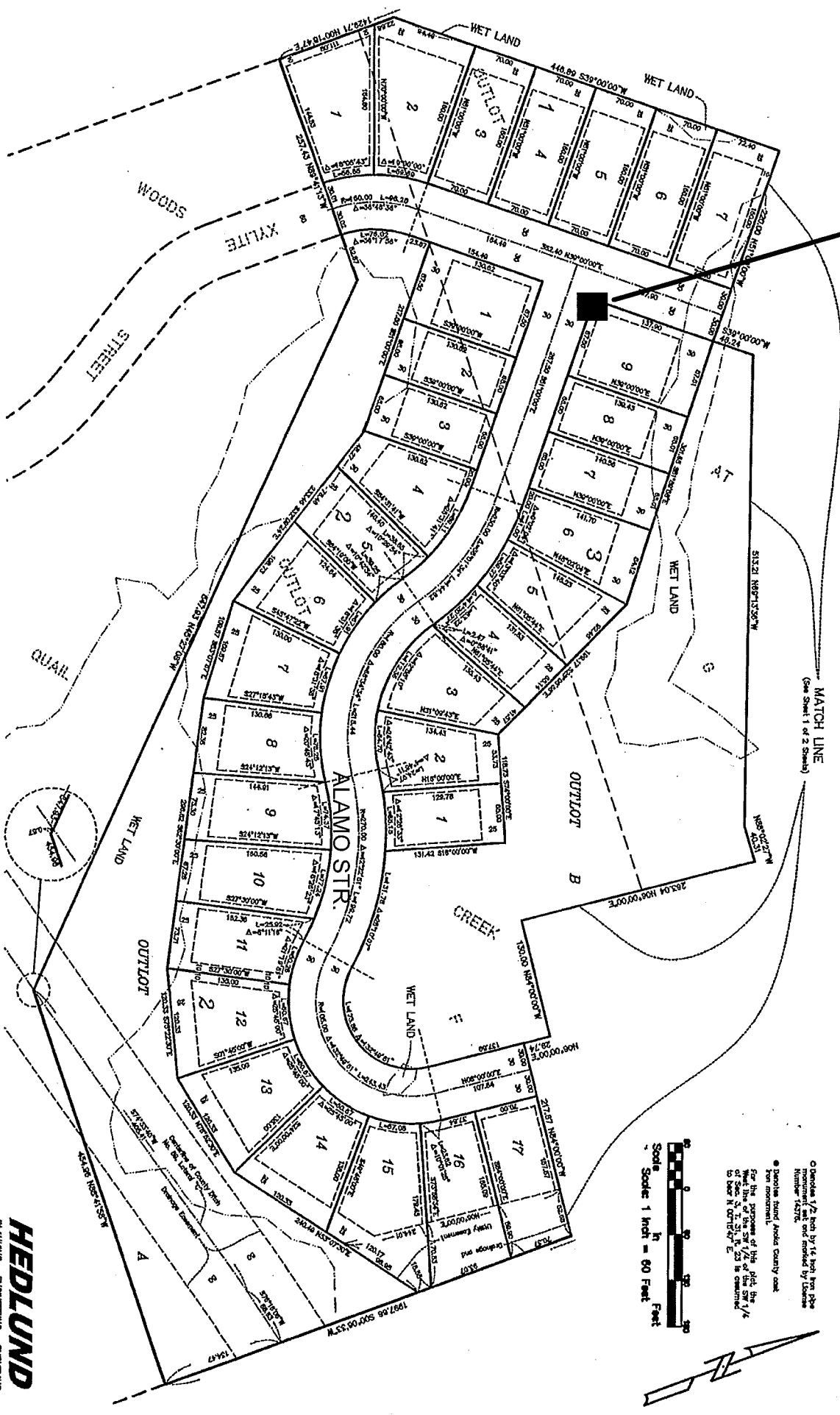


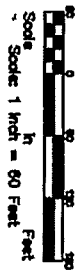
PROPOSED
STOP SIGN

WOODS AT QUAIL CREEK 2ND ADDITION

City of Blaine
County of Anoka
Sec. 3, T. 31, R. 23



HEDLUND
PLANNING ENGINEERING SURVEYING



© Donald V. Hedlund by 1/4 inch by 1/4 inch
Scale: 1 inch = 80 Feet
Number: 14276
See the plat of this site for
a more detailed description of the
property and the location of the
stop sign. The plat is on file
with the County Auditor.

