

# SHADOW PONDS VILLAGE

City of Blaine  
County of Anoka  
Sec. 9, T31, R23

KNOW ALL PERSONS BY THESE PRESENTS: That Shadow Ponds, LLC, a Minnesota limited liability company, owner of the following described property:

Lots 1 thru 17, Block 1 and Lots 1 thru 10, Block 2, SHADOW PONDS, Anoka County, Minnesota.

Has caused the same to be surveyed and platted as SHADOW PONDS VILLAGE and does hereby dedicate to the public for public use the drainage and utility easements as shown on this plat.

In witness whereof said Shadow Ponds, LLC, a Minnesota limited liability company, has caused these presents to be signed by its proper officer this \_\_\_\_\_ day of \_\_\_\_\_, 20\_\_\_\_

SHADOW PONDS, LLC

\_\_\_\_\_, as Treasurer  
Barry Onufrock

STATE OF MINNESOTA  
COUNTY OF \_\_\_\_\_

This instrument was acknowledged before me this \_\_\_\_\_ day of \_\_\_\_\_, 20\_\_\_\_ by Barry Onufrock, as Treasurer of Shadow Ponds, LLC, a Minnesota limited liability company, on behalf of the company.

Notary Public, \_\_\_\_\_ County, Minnesota  
My Commission Expires \_\_\_\_\_

I, Jason E. Rud do hereby certify that this plat was prepared by me or under my direct supervision; that I am a duly Licensed Land Surveyor in the State of Minnesota; that this plat is a correct representation of the boundary survey; that all mathematical data and labels are correctly designated on this plat; that all monuments depicted on this plat have been, or will be correctly set within one year; that all water boundaries and wet lands, as defined in Minnesota Statutes, Section 505.01, Subd. 3, as of the date of this certificate are shown and labeled on this plat; and all public ways are shown and labeled on this plat.

Dated this \_\_\_\_\_ day of \_\_\_\_\_, 20\_\_\_\_.

Jason E. Rud, Licensed Land Surveyor  
Minnesota License No. 41578

STATE OF MINNESOTA  
COUNTY OF \_\_\_\_\_

This instrument was acknowledged before me this \_\_\_\_\_ day of \_\_\_\_\_, 20\_\_\_\_ by Jason E. Rud.

Notary Public, \_\_\_\_\_ County, Minnesota  
My Commission Expires \_\_\_\_\_

City Council, City of Blaine, Minnesota

This plat of SHADOW PONDS VILLAGE was approved and accepted by the City Council of the City of Blaine, Minnesota at a regular meeting thereof held this \_\_\_\_\_ day of \_\_\_\_\_, 20\_\_\_\_ and said plat is in compliance with the provisions of Minnesota Statutes, Section 505.03, Subd. 2.

City Council, City of Blaine, Minnesota

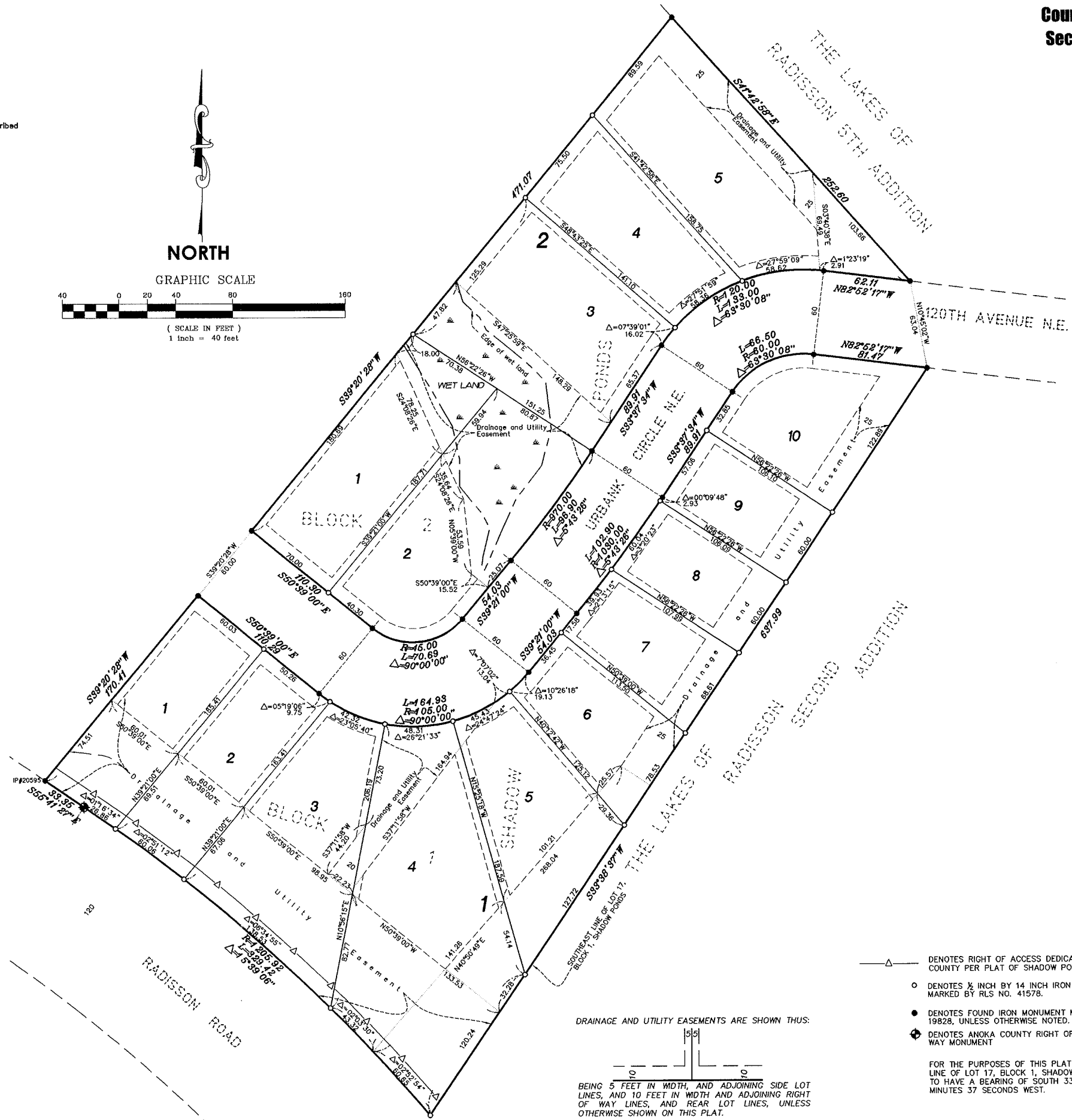
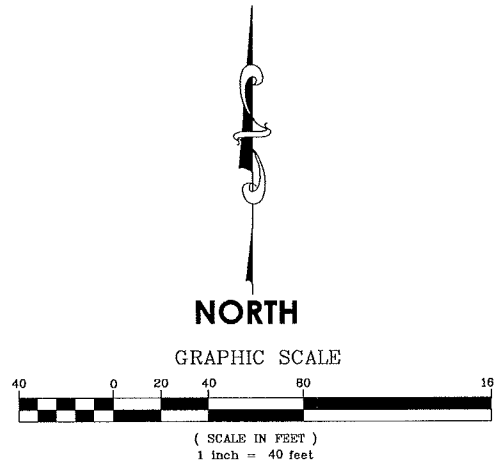
By \_\_\_\_\_ Mayor

By \_\_\_\_\_ Clerk

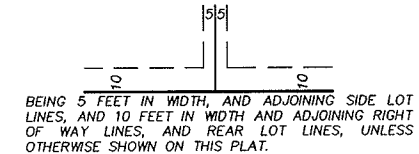
County Surveyor

I hereby certify that in accordance with Minnesota Statutes, Section 505.021, Subd. II, this plat has been reviewed and approved this \_\_\_\_\_ day of \_\_\_\_\_, 20\_\_\_\_.

Larry D. Holm  
Anoka County Surveyor



DRAINAGE AND UTILITY EASEMENTS ARE SHOWN THUS:



- △ DENOTES RIGHT OF ACCESS DEDICATED TO ANOKA COUNTY PER PLAT OF SHADOW POND.
- DENOTES 1/2 INCH BY 14 INCH IRON PIPE MARKED BY RLS NO. 41578.
- DENOTES FOUND IRON MONUMENT MARKED BY RLS NO. 19828, UNLESS OTHERWISE NOTED.
- ⊕ DENOTES ANOKA COUNTY RIGHT OF WAY MONUMENT

FOR THE PURPOSES OF THIS PLAT THE SOUTHEAST LINE OF LOT 17, BLOCK 1, SHADOW PONDS IS ASSUMED TO HAVE A BEARING OF SOUTH 33 DEGREES 38 MINUTES 37 SECONDS WEST.

