

Case File No.14-0008

Blaine Planning Department / 10801 Town Square Dr NE / Blaine, MN 55449 / (763) 785-6180



MADelyn COVE

KNOW ALL PERSONS BY THESE PRESENTS: That Kayak Remodeling and Redevelopment, Inc., a Minnesota limited liability company, fee owner of the following described property:

Lot 21, SPRING LAKE PARK Shores, Addition, EXCEPT the East 150 feet thereof, Anoka County, Minnesota.
and
Lot 40, SPRING LAKE PARK Shores, Addition, Anoka County, Minnesota.

Has caused the same to be surveyed and platted as MADELYN COVE and does hereby dedicate to the public for public use the drainage and utility easements as shown on this plat.

In witness whereof said Kayak Remodeling and Redevelopment, Inc., a Minnesota limited liability company, has caused these presents to be signed by its proper officer this day of _____, 20____.

KAYAK REMODELING AND REDEVELOPMENT, INC.

Terry Buchanan, Chief Manager

STATE OF MINNESOTA
COUNTY OF _____

This instrument was acknowledged before me this ____ day of _____, 20____ by Terry Buchanan, Chief Manager of Kayak Remodeling and Redevelopment, Inc., a Minnesota limited liability company.

Notary Public, _____ County, Minnesota
My Commission Expires _____

I, Eric R. Vickoryous do hereby certify that this plat was prepared by me or under my direct supervision; that I am a duly Licensed Land Surveyor in the State of Minnesota; that this plat is a correct representation of the boundary survey; that all mathematical data and labels are correctly designated on this plat; that all monuments depicted on this plat have been, or will be correctly set within one year; that all water boundaries and wet lands, as defined in Minnesota Statutes, Section 505.01, Subd. 3, as of the date of this certificate are shown and labeled on this plat; and all public ways are shown and labeled on this plat.

Dated this ____ day of _____, 20____.

Eric R. Vickoryous, Licensed Land Surveyor
Minnesota License Number 44125

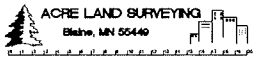
STATE OF MINNESOTA
COUNTY OF _____

This instrument was acknowledged before me this ____ day of _____, 20____ by Eric R. Vickoryous.

Notary Public, _____ County, Minnesota
My Commission Expires _____

FOR THE PURPOSES OF THIS PLAT, THE MOST NORTHERLY LINE OF OUTLOT A, CLUB WEST FIFTEENTH ADDITION, ANOKA COUNTY, MINNESOTA, IS ASSIGNED TO BEAR N87°02'17"E.

● DENOTES FOUND MONUMENT.
○ DENOTES 1/2 INCH IRON PIPE MARKED BY LICENSE NO. 44125.
ALL MONUMENT REQUIRED BY MINNESOTA STATUTE WILL BE SET WITHIN ONE YEAR OF THE RECORDING DATE OF THIS PLAT, AND SHALL BE ENDORSED BY A 1/2" INCH BY 1 1/4" INCH IRON PIPE MARKED BY RLS 44125.



CITY OF BLAINE
COUNTY OF ANOKA
SEC. 32, TWP. 31, RNG. 23

CITY COUNCIL, CITY OF BLAINE, MINNESOTA

This plat of MADELYN COVE was approved and accepted by the City Council of the City of Blaine, Minnesota at a regular meeting thereof held this ____ day of _____, 20____, and said plat is in compliance with the provisions of Minnesota Statutes, Section, 505.03, Subd. 2.

CITY COUNCIL, CITY OF BLAINE, MINNESOTA

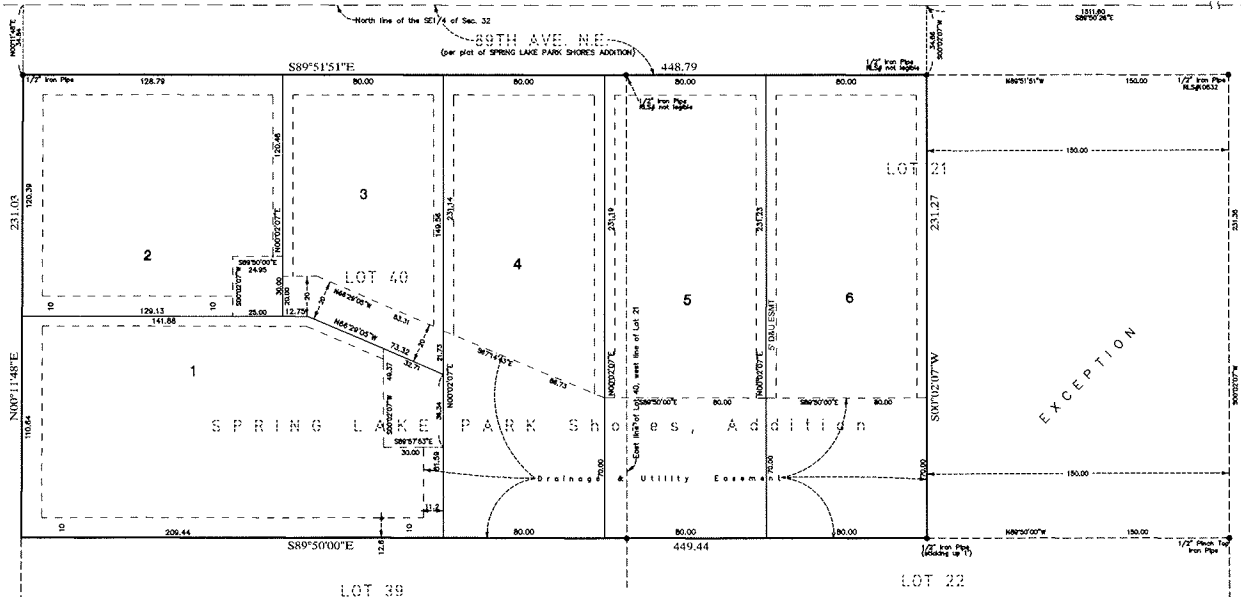
By: _____ Mayor By: _____ Clerk

COUNTY SURVEYOR

I hereby certify that in accordance with Minnesota Statutes, Section 505.021, Subd. 11, this plat has been reviewed and approved this ____ day of _____, 20____.

By: _____
Larry D. Holm
Anoka County Surveyor

0 SCALE 30
(SCALE IN FEET)
1 inch = 30 feet



East 1/2 corner of Sec. 32, Twp. 31, Rng. 23