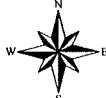


Case File No. 13-0047



HENNUM MEADOWS SOUTH

City of Blaine
County of Anoka
Sec. 30, T31, R10

KNOW ALL PERSONS BY THESE PRESENTS: That Summit Land Development, LLC, a Minnesota limited liability company, owner and that Community Pride Bank, a Minnesota banking corporation, mortgagee of the following described property:

Outlot A, RUDNITSKI 2ND ADDITION, and Outlot A, RUDNITSKI ADDITION, Anoka County, Minnesota.

and DC Investments Minnesota, LLC, a Minnesota limited liability company, owner and that Community Pride Bank, a Minnesota banking corporation, mortgagee of the following described property:

The South 110 feet of the East 350 feet of the South Half of Lot 23 GREEN ACRES ADDITION, Anoka County, Minnesota.

Have caused the same to be surveyed and plotted as HENNUM MEADOWS SOUTH and do hereby dedicate to the public for public use the public ways and the drainage and utility easements as shown by this plot.

In witness whereof said Summit Land Development, LLC, a Minnesota limited liability company, has caused these presents to be signed by its proper officer this _____ day of _____, 20____.

Summit Land Development, LLC

David C. Erickson _____ Chief Manager

STATE OF MINNESOTA
COUNTY OF _____

This instrument was acknowledged before me this _____ day of _____, 20____ by David C. Erickson, Chief Manager of Summit Land Development, LLC, a Minnesota limited liability company.

Notary Public, _____ County, Minnesota
My Commission Expires _____

In witness whereof said DC Investments Minnesota, LLC, a Minnesota limited liability company, has caused these presents to be signed by its proper officer this _____ day of _____, 20____.

DC Investments Minnesota, LLC

Deborah D. Rudnikal _____ Chief Manager

STATE OF MINNESOTA
COUNTY OF _____

This instrument was acknowledged before me this _____ day of _____, 20____ by Deborah D. Rudnikal, Chief Manager of DC Investments Minnesota, LLC, a Minnesota limited liability company.

Notary Public, _____ County, Minnesota
My Commission Expires _____

In witness whereof said Community Pride Bank, a Minnesota banking corporation, has caused these presents to be signed by its proper officer this _____ day of _____, 20____.

Community Pride Bank

Tyler M. Messerole _____ Executive Vice President

STATE OF MINNESOTA
COUNTY OF _____

This instrument was acknowledged before me this _____ day of _____, 20____ by Tyler M. Messerole, Executive Vice President of Community Pride Bank, a Minnesota banking corporation.

Notary Public, _____ County, Minnesota
My Commission Expires _____

I, James E. Napier, do hereby certify that this plot was prepared by me or under my direct supervision; that I am a duly Licensed Land Surveyor in the State of Minnesota; that this plot is a correct representation of the boundary survey; that all mathematical data and labels are correctly designated on this plot; that all monuments depicted on this plot have been, or will be correctly set within one year; that all water boundaries and wet lands, as defined in Minnesota Statutes, Section 505.01, Subd. 3, or as of the date of this certificate are shown and labeled on this plot; and all public ways are shown and labeled on this plot.

Dated this _____ day of _____, 20____.

James E. Napier, Licensed Land Surveyor
Minnesota License No. 25343

STATE OF MINNESOTA
COUNTY OF _____

This instrument was acknowledged before me this _____ day of _____, 20____ by James E. Napier.

Notary Public, _____ County, Minnesota
My Commission Expires _____

City Council, City of Blaine, Minnesota

This plot of HENNUM MEADOWS SOUTH was approved and accepted by the City Council of the City of Blaine, Minnesota at a regular meeting thereof held this _____ day of _____, 20____, and said plot is in compliance with the provisions of Minnesota Statutes, Section 505.04, Subd. 2.

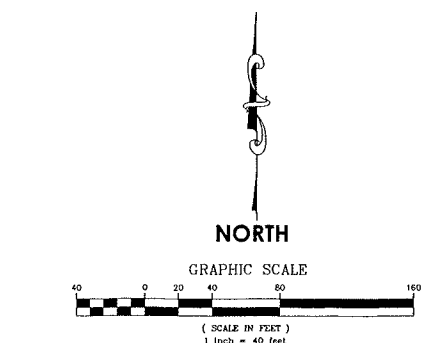
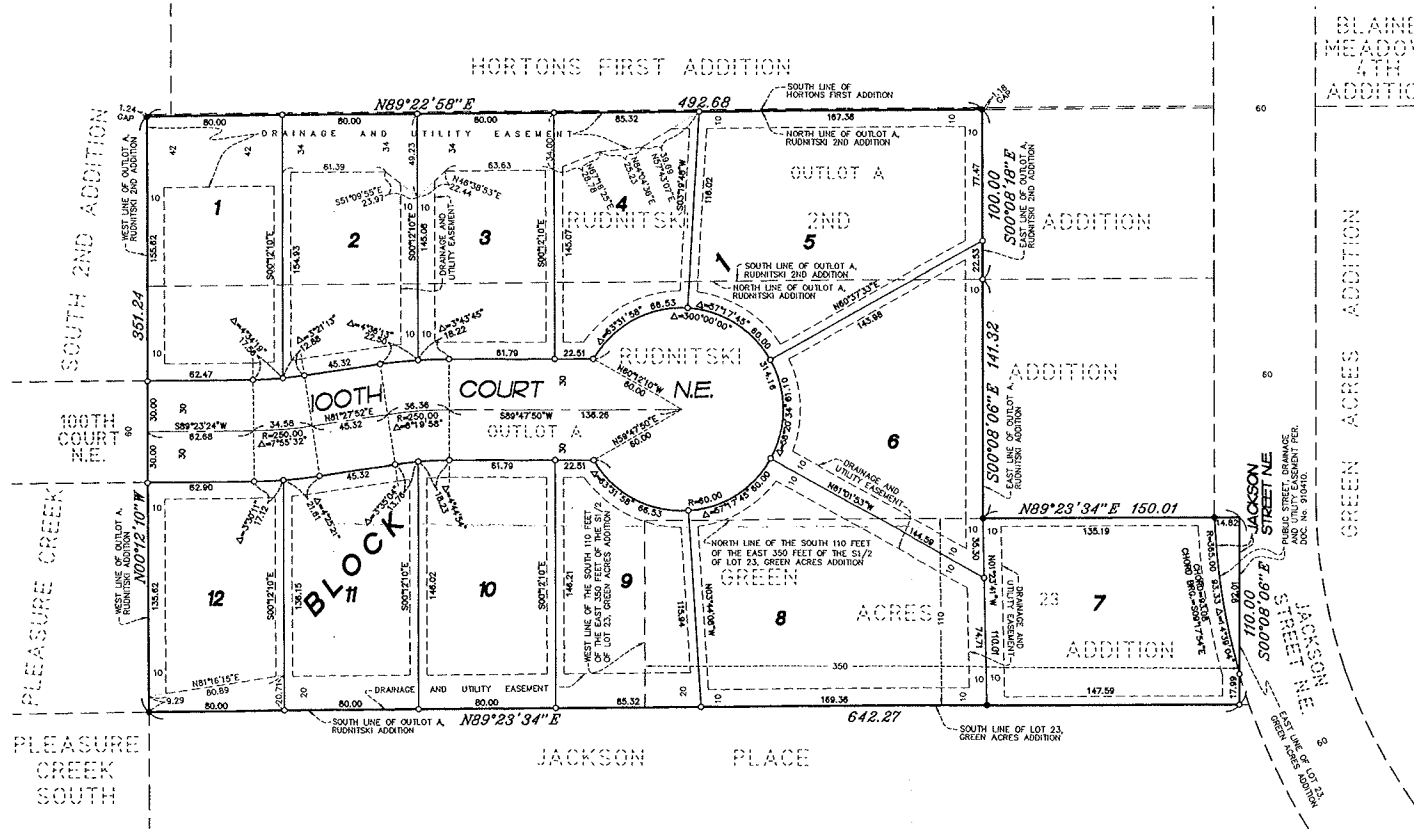
City Council, City of Blaine, Minnesota

By _____ Mayor By _____ Clerk

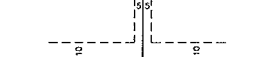
County Surveyor

I hereby certify that in accordance with Minnesota Statutes, Section 505.021, Subd. 11, this plot has been reviewed and approved this _____ day of _____, 20____.

Larry D. Holm
Anoka County Surveyor



DRAINAGE AND UTILITY EASEMENTS ARE SHOWN THUS:



- DENOTES 1/2 INCH BY 1/2 INCH IRON PIPE MARKED BY RLS NO. 25343.
- DENOTES FOUND IRON MONUMENT

FOR THE PURPOSES OF THIS PLAT THE SOUTH LINE OF LOT 23 OF GREEN ACRES ADDITION IS ASSUMED TO HAVE A BEARING OF NORTH 89 DEGREES 23 MINUTES 34 SECONDS EAST.

E. G. RUD & SONS, INC.
Professional Land Surveyors
1871 1977