

Case File No. 10-0035

Blaine Planning Department / 10801 Town Square Dr NE / Blaine, MN 55449 / (763) 785-6180



ST. CLAIR PARK 7TH ADDITION

City of Blaine
County of Anoka
Sec. 27, T31, R23

KNOW ALL PERSONS BY THESE PRESENTS: That Park Development Corporation, a Minnesota corporation, owner of the following described property:

Outlot A, ST. CLAIR PARK 3RD ADDITION, Anoka County, Minnesota.

AND

The South One Half of Lot 24, SPRING LAKE PARK WOODLAND, Anoka County, Minnesota.

Has caused the same to be surveyed and plotted as ST. CLAIR PARK 7TH ADDITION and does hereby dedicate to the public for public use the drainage and utility easements and public way as shown by this plat.

In witness whereof said Park Development Corporation, a Minnesota corporation, has caused these presents to be signed by its proper officer this _____ day of _____, 20____

PARK DEVELOPMENT CORPORATION

_____, as President
Janie Jensen

STATE OF MINNESOTA
COUNTY OF _____

This instrument was acknowledged before me this _____ day of _____, 20____ by Janie Jensen, as President of Park Development Corporation, a Minnesota corporation.

Notary Public, _____ County, Minnesota
My Commission Expires _____

I, Jason E. Rud do hereby certify that this plat was prepared by me or under my direct supervision; that I am a duly Licensed Land Surveyor in the State of Minnesota; that this plat is a correct representation of the boundary survey; that all mathematical data and labels are correctly designated on this plat; that all monuments depicted on this plat have been set; that all water boundaries and wet lands, as defined in Minnesota Statutes, Section 505.03, Subd. 3, as of the date of this certificate are shown and labeled on this plat; and all public ways are shown and labeled on this plat.

Dated this _____ day of _____, 20____

Jason E. Rud, Licensed Land Surveyor
Minnesota License No. 41578

STATE OF MINNESOTA
COUNTY OF _____

This instrument was acknowledged before me this _____ day of _____, 20____ by Jason E. Rud.

Notary Public, _____ County, Minnesota
My Commission Expires _____

City Council, City of Blaine, Minnesota

This plat of ST. CLAIR PARK 7TH ADDITION was approved and accepted by the City Council of the City of Blaine, Minnesota at a regular meeting thereof held this _____ day of _____, 20____ and said plat is in compliance with the provisions of Minnesota Statutes, Section 505.03, Subd. 2.

City Council, City of Blaine, Minnesota

By _____ Mayor

By _____ Clerk

County Surveyor

I hereby certify that in accordance with Minnesota Statutes, Section 505.021, Subd. 11, this plat has been reviewed and approved this _____ day of _____, 20____

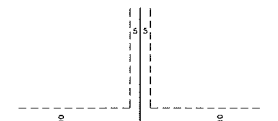
Larry D. Holm
Anoka County Surveyor

- DENOTES 1/2 INCH FOUND IRON MONUMENT WITH CAP MARKED RLS 9808, UNLESS OTHERWISE NOTED.
- DENOTES SET 1/2 INCH BY 14 INCH IRON PIPE MARKED BY RLS NO. 41578.

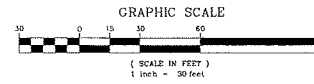
For the purposes of this plat the North line of Outlot A, ST. CLAIR PARK 3RD ADDITION, Anoka County, Minnesota, is assumed to have a bearing of North 89 degree 52 minute 40 seconds East.

EASEMENT DETAIL

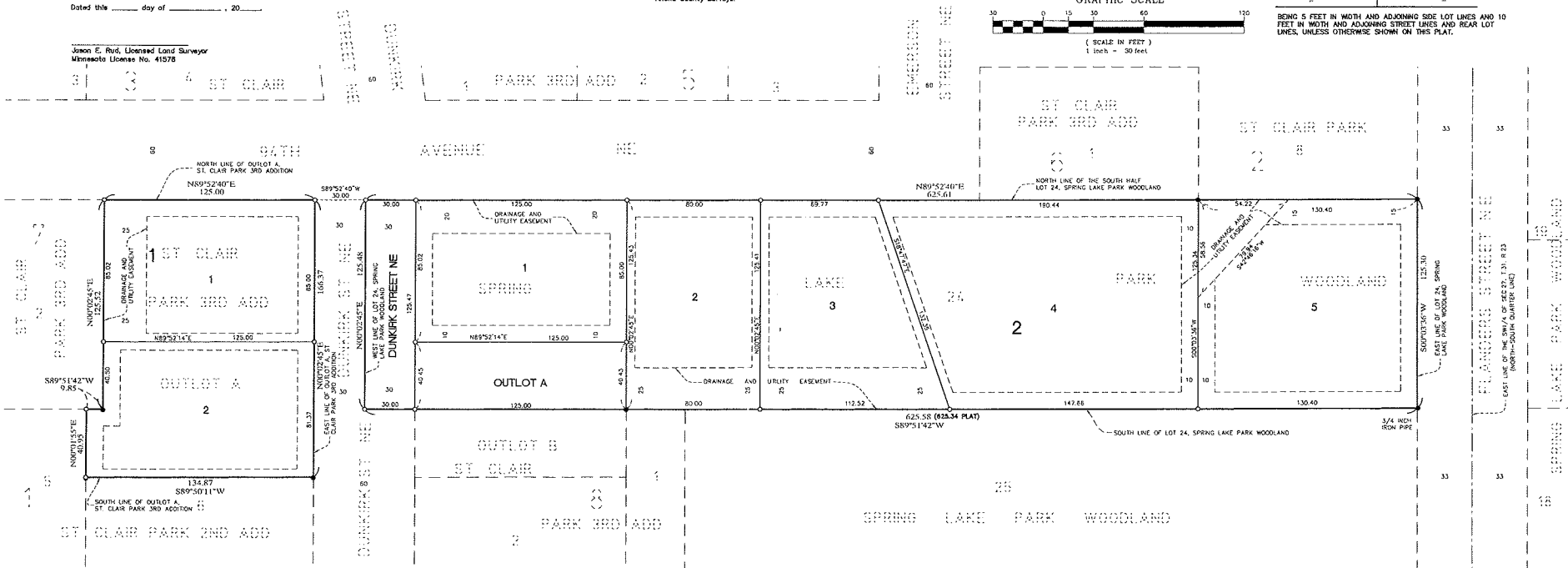
DRAINAGE AND UTILITY EASEMENTS ARE SHOWN THIS:



BEING 5 FEET IN WIDTH AND ADJOINING SIDE LOT LINES AND 10 FEET IN WIDTH AND ADJOINING STREET LINES AND REAR LOT LINES, UNLESS OTHERWISE SHOWN ON THIS PLAT.



NORTH



E. G. RUD & SONS, INC.
Professional Land Surveyors
EST. 1917