

Zoning & Location Map
Case File No. 12-0008



WOODLAND VILLAGE

CITY OF BLAINE
 COUNTY OF ANOKA
 Sec. 12, Twp. 31, Rge. 23

THIS PLAN IS THE PROPERTY OF THE CITY OF BLAINE AND IS NOT TO BE REPRODUCED OR COPIED IN ANY MANNER WITHOUT THE WRITTEN PERMISSION OF THE CITY ENGINEER. ANY REPRODUCTION OR COPIING OF THIS PLAN WITHOUT THE WRITTEN PERMISSION OF THE CITY ENGINEER IS STRICTLY PROHIBITED. THE CITY ENGINEER'S OFFICE IS LOCATED AT 1000 1/2 AVENUE NORTH, BLAINE, MINNESOTA 55412. THE CITY ENGINEER'S PHONE NUMBER IS 763-425-1100. THE CITY ENGINEER'S FAX NUMBER IS 763-425-1101. THE CITY ENGINEER'S E-MAIL ADDRESS IS CITYENGINEER@CITYOFBLAINE.MN.GOV.

Scale: 1/4" = 10'

STATE OF MINNESOTA
 COUNTY OF ANOKA

City of Blaine
 City Engineer
 1000 1/2 AVENUE NORTH, BLAINE, MINNESOTA 55412
 PHONE: 763-425-1100
 FAX: 763-425-1101
 E-MAIL: CITYENGINEER@CITYOFBLAINE.MN.GOV

STATE OF MINNESOTA
 COUNTY OF ANOKA
 City of Blaine
 City Engineer
 1000 1/2 AVENUE NORTH, BLAINE, MINNESOTA 55412
 PHONE: 763-425-1100
 FAX: 763-425-1101
 E-MAIL: CITYENGINEER@CITYOFBLAINE.MN.GOV

STATE OF MINNESOTA
 COUNTY OF ANOKA

City of Blaine
 City Engineer
 1000 1/2 AVENUE NORTH, BLAINE, MINNESOTA 55412
 PHONE: 763-425-1100
 FAX: 763-425-1101
 E-MAIL: CITYENGINEER@CITYOFBLAINE.MN.GOV

STATE OF MINNESOTA
 COUNTY OF ANOKA

City of Blaine
 City Engineer
 1000 1/2 AVENUE NORTH, BLAINE, MINNESOTA 55412
 PHONE: 763-425-1100
 FAX: 763-425-1101
 E-MAIL: CITYENGINEER@CITYOFBLAINE.MN.GOV

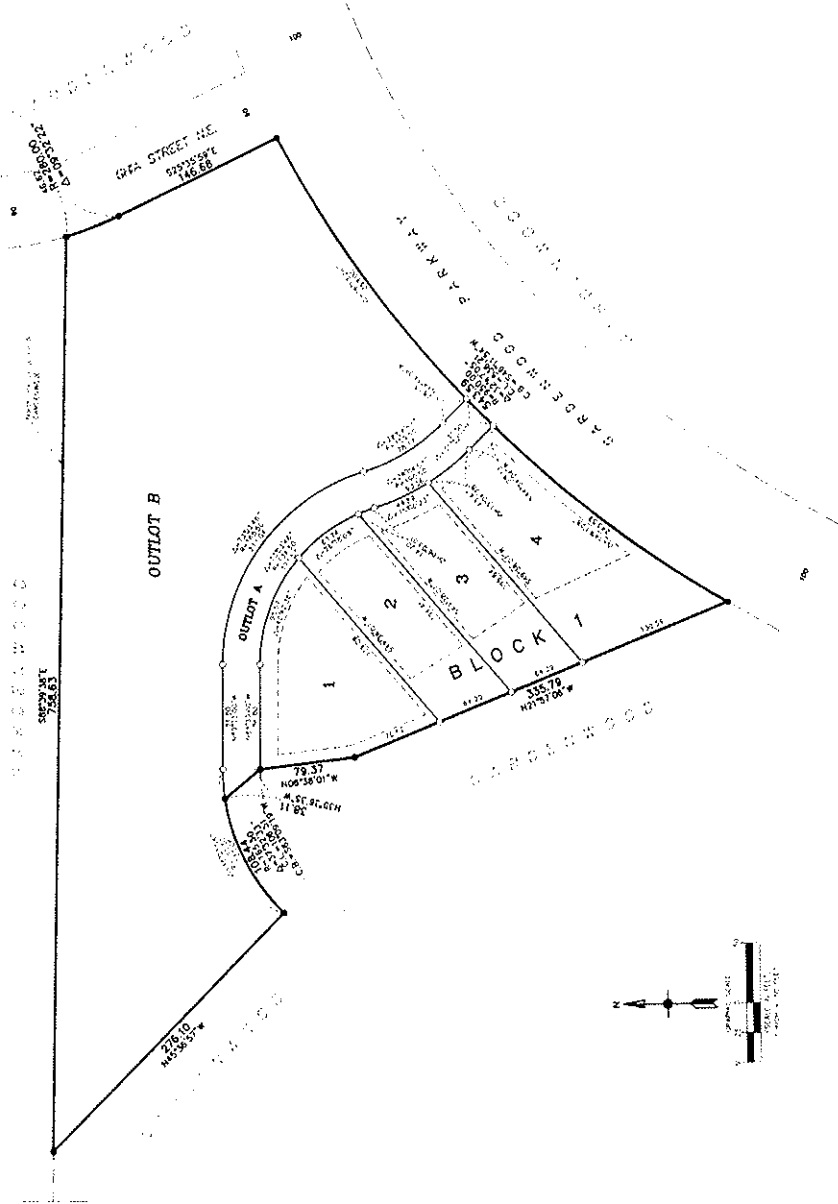
STATE OF MINNESOTA
 COUNTY OF ANOKA

City of Blaine
 City Engineer
 1000 1/2 AVENUE NORTH, BLAINE, MINNESOTA 55412
 PHONE: 763-425-1100
 FAX: 763-425-1101
 E-MAIL: CITYENGINEER@CITYOFBLAINE.MN.GOV

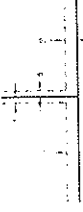
STATE OF MINNESOTA
 COUNTY OF ANOKA

City of Blaine
 City Engineer
 1000 1/2 AVENUE NORTH, BLAINE, MINNESOTA 55412
 PHONE: 763-425-1100
 FAX: 763-425-1101
 E-MAIL: CITYENGINEER@CITYOFBLAINE.MN.GOV

STATE OF MINNESOTA
 COUNTY OF ANOKA



DRAINAGE AND UTILITY
 EASEMENTS ARE SHOWN THUS:



5-foot utility easement
 10-foot utility easement
 15-foot utility easement
 20-foot utility easement
 25-foot utility easement
 30-foot utility easement
 35-foot utility easement
 40-foot utility easement
 45-foot utility easement
 50-foot utility easement
 55-foot utility easement
 60-foot utility easement
 65-foot utility easement
 70-foot utility easement
 75-foot utility easement
 80-foot utility easement
 85-foot utility easement
 90-foot utility easement
 95-foot utility easement
 100-foot utility easement

For the purposes of this plan, the north-south line of
 Outlot B, Gardenwood, is assumed to have a
 bearing of South 88°59'38" East.

- Delineate found iron monument marked with license number 20935