

Case File No. 14-0021

Blaine Planning Department / 10801 Town Square Dr NE / Blaine, MN 55449 / (763) 785-6180



BLAINE UNIVERSITY AVENUE TOWNHOMES

CITY OF BLAINE
COUNTY OF ANOKA
SEC. 18, T. 31, R. 23

KNOW ALL PERSONS BY THESE PRESENTS: That Anoka County Community Action Program, Inc., a Minnesota Corporation, owner of the following described property:

Those parts of Lot 20, 21, 22, 23, 24, and 25, all in Block 4, CUSACK & CARLSON'S BLAINE OAKS, Anoka County, Minnesota, lying easterly of ANOKA COUNTY HIGHWAY RIGHT-OF-WAY PLAT NO. 88, Anoka County, Minnesota.

AND

The East 112.43 feet of Lots 16 through 19, inclusive, Block 4, CUSACK & CARLSON'S BLAINE OAKS, Anoka County, Minnesota.

AND

The West 172.46 feet of the North 156.2 feet of the South 567.7 feet of the West One-Fourth of the Southwest Quarter of the Southwest Quarter, as measured along the East and West lines of said West One-Fourth of the Southwest Quarter of Section 18, Township 31, Range 23, Anoka County, Minnesota, EXCEPT the West 33.00 feet thereof.

Has caused the same to be surveyed and platted as BLAINE UNIVERSITY AVENUE TOWNHOMES and does hereby dedicate to the public for public use the drainage and utility easements as shown on this plat.

In witness whereof said Anoka County Community Action Program, Inc., a Minnesota Corporation, has caused these presents to be signed by its proper officer this _____ day of _____, 20____.

ANOKA COUNTY COMMUNITY ACTION PROGRAM, INC.

_____, as _____

STATE OF _____

COUNTY OF _____

This instrument was acknowledged before me this _____ day of _____, 20____, by _____, as _____ of Anoka County Community Action Program, Inc., a Minnesota Corporation, on behalf of the corporation.

_____,

Notary Public, _____

My commission expires _____

I, Charles R. Christopherson do hereby certify that this plat was prepared by me or under my direct supervision; that I am a duly Licensed Land Surveyor in the State of Minnesota; that this plat is a correct representation of the boundary survey; that all mathematical data and labels are correctly designated on this plat; that all monuments depicted on this plat have been, or will be correctly set within one year; that all water boundaries and wet lands, as defined in Minnesota Statutes, Section 505.01, Subd. 3, as of the date of this certificate are shown and labeled on this plat; and all public ways are shown and labeled on this plat.

Dated this _____ day of _____, 20____.

Charles R. Christopherson, Licensed Land Surveyor
Minnesota License No. 18420

STATE OF MINNESOTA
COUNTY OF ANOKA

This instrument was acknowledged before me this _____ day of _____, 20____, by Charles R. Christopherson.

_____,

Notary Public, Minnesota.

My commission expires _____

City Council, City of Blaine Minnesota

This plat of BLAINE UNIVERSITY AVENUE TOWNHOMES was approved and accepted by the City Council of the City of Blaine, Minnesota at a regular meeting thereof held this _____ day of _____, 20____, and said plat is in compliance with the provisions of Minnesota Statutes, Section 505.03, Subd. 2.

City Council, City of Blaine, Minnesota

By : _____, Mayor

By : _____, Clerk

ANOKA COUNTY SURVEYOR

I hereby certify that in accordance with Minnesota Statutes, Section 505.021, Subd. 11, this plat has been reviewed and approved this _____ day of _____, 20____.

Larry D. Holm,
Anoka County Surveyor

ANOKA COUNTY AUDITOR/TREASURER

Pursuant to Minnesota Statutes, Section 505.021, Subd. 9, taxes payable in the year 20____ on the land hereinbefore described have been paid. Also, pursuant to Minnesota Statutes, Section 272.12, there are no delinquent taxes and transfer entered this _____ day of _____, 20____.

Property Tax Administrator

By _____, Deputy

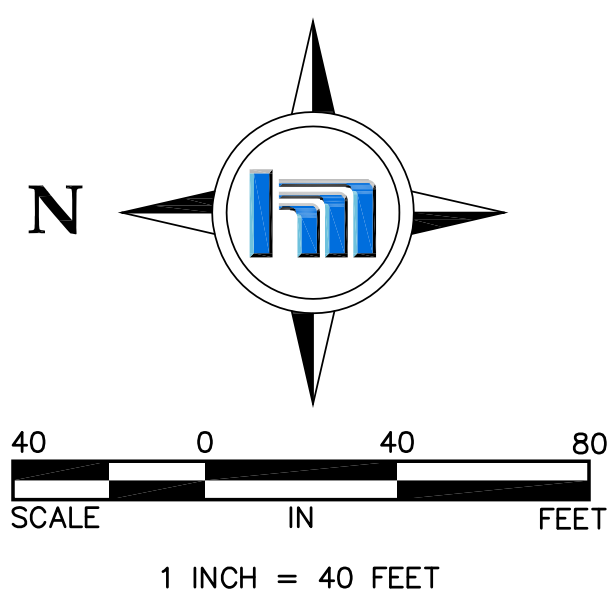
ANOKA COUNTY RECORDER/REGISTRAR OF TITLES

County of Anoka, State of Minnesota

I hereby certify that this plat of BLAINE UNIVERSITY AVENUE TOWNHOMES was filed in the office of the County Recorder/Registrar of Titles for public record on this _____ day of _____, 20____, at _____ o'clock _____ M. and was duly recorded in Book _____ Page _____, as Document Number _____.

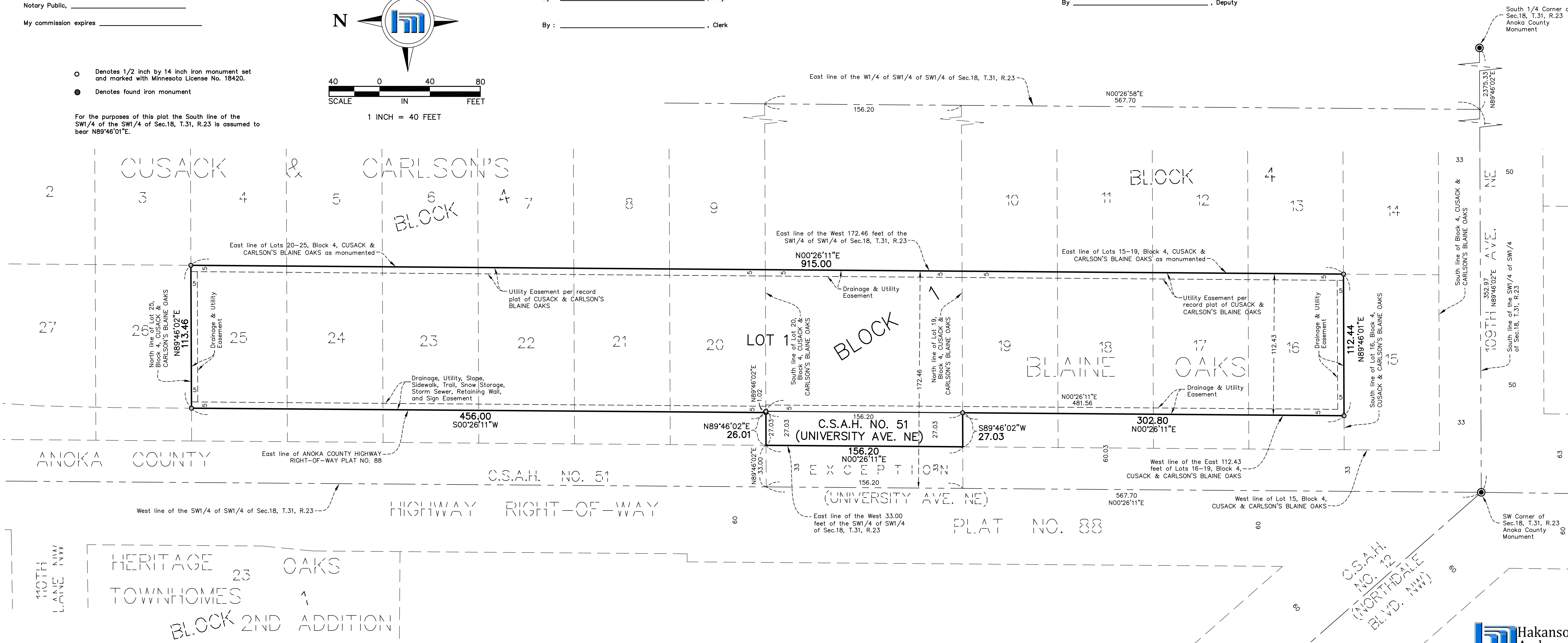
County Recorder/Registrar of Titles

By _____, Deputy



- Denotes 1/2 inch by 14 inch iron monument set and marked with Minnesota License No. 18420.
- Denotes found iron monument

For the purposes of this plat the South line of the SW1/4 of the SW1/4 of Sec.18, T.31, R.23 is assumed to bear N89°46'01"E.



South 1/4 Corner of Sec.18, T.31, R.23 Anoka County Monument

SW Corner of Sec.18, T.31, R.23 Anoka County Monument

