

Case File No. 15-0059



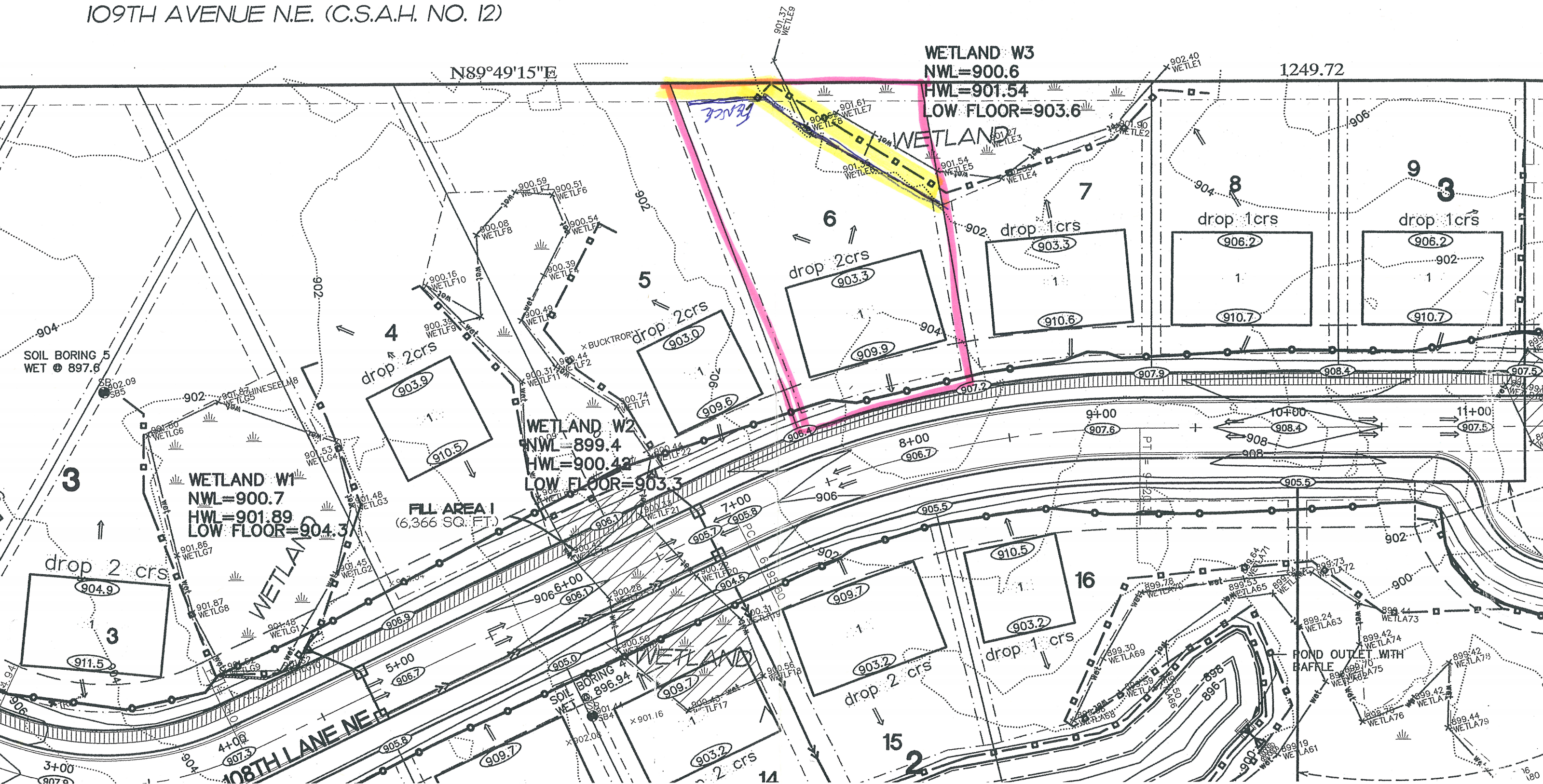
Blaine Planning Department / 10801 Town Square Dr NE / Blaine, MN 55449 / (763) 785-6180

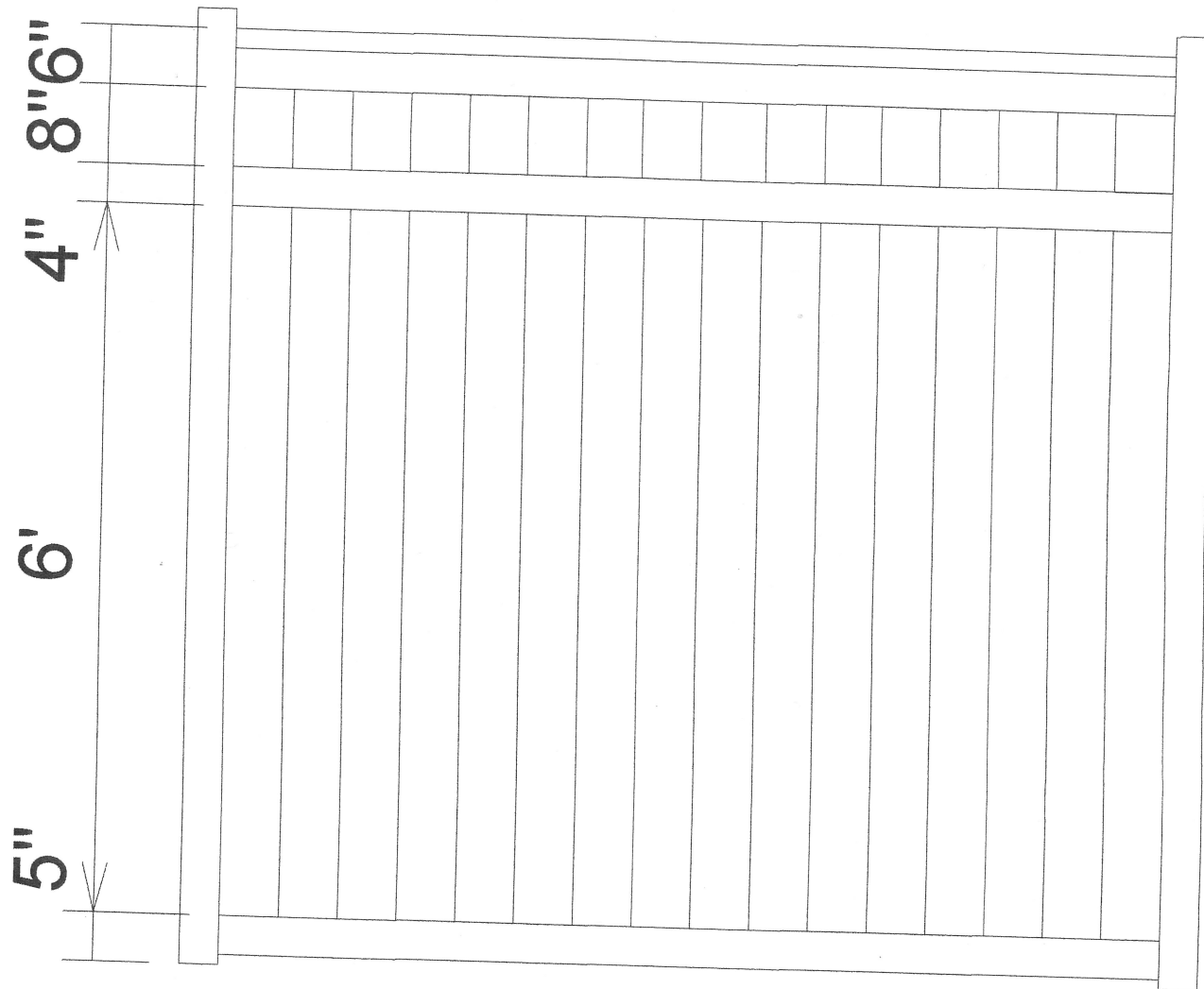


EROSION CONTROL PLAN 109TH ADDITION

RECEIVED
SEP 11 2015
CITY OF BLAINE
PLANNING DEPT.

109TH AVENUE N.E. (C.S.A.H. NO. 12)





Fence Detail

typical 8' section

Cedar 4" x 4" Posts

Cedar 1" x 6" Boards