

Case File No. 18-0061
Kozlak-Radulovich Funeral Chapel

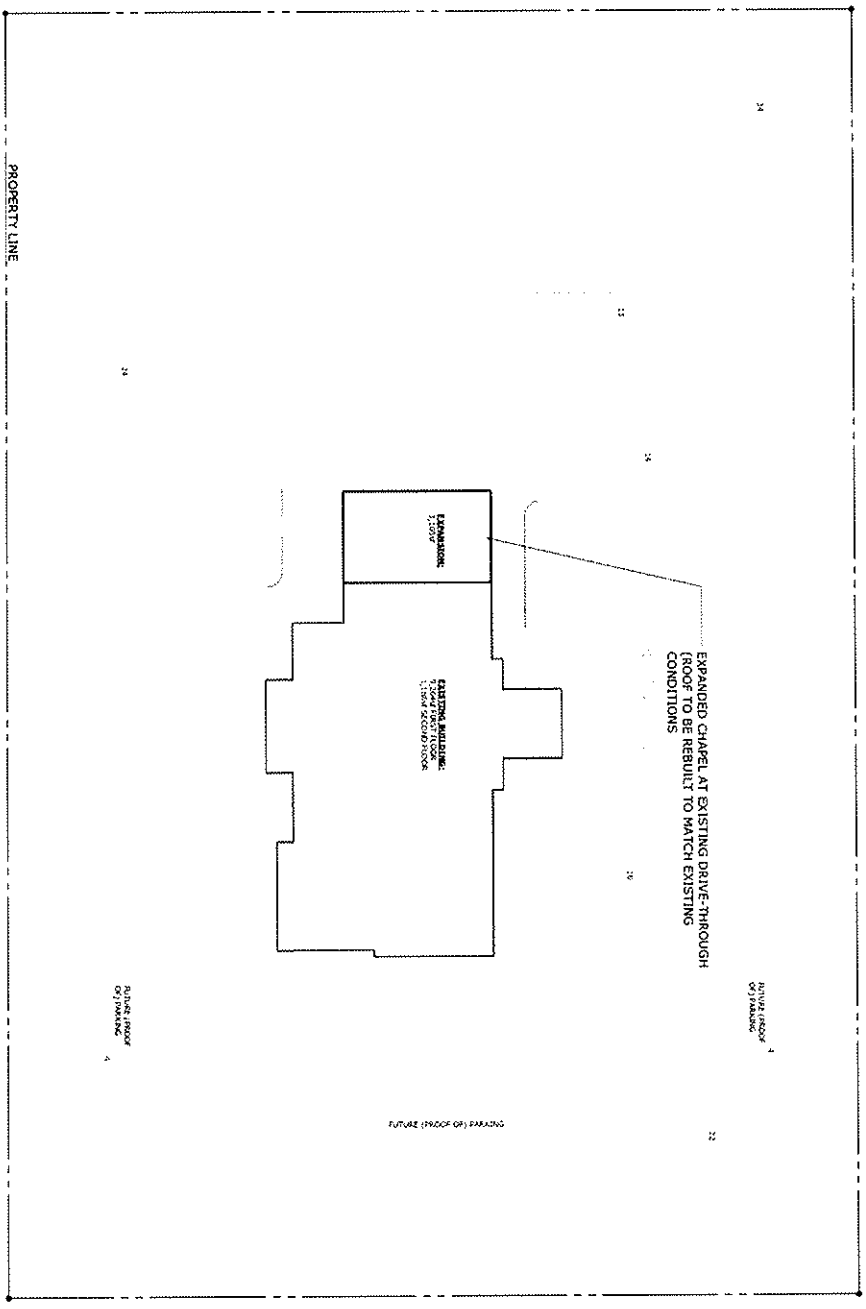
Blaine Planning Department / 10801 Town Square Dr NE / Blaine, MN 55449 / (763) 785-6180



① SITE
17-26-C



107TH AVE NE



CENTRAL AVE NE

PARKING CALCULATION:

2' OF GARAGE	2.50
TRUCKING	10
EXISTING (PROOF OF) PARKING	10
TOTAL	22.50



Site Plan
 1385 107TH AVE NE
 BLAINE, MN 55434

SITE PLAN

KOZLAK-RADULOVICH FUNERAL CHAPEL
 1385 107TH AVE NE
 BLAINE, MN 55434

PROJECT: 18159
 DESIGN BY: OCA
 CHECKED BY: ST
 DATE: 09/20/2018
 REVISIONS:

CUP
 AMENDMENT

A2



34 PARKING SPACES

13 PARKING SPACES

14 PARKING SPACES

EXISTING DRIVE THROUGH CARPORT. PROPOSED INFILL TO EXPAND CHAPEL

10 PARKING SPACES

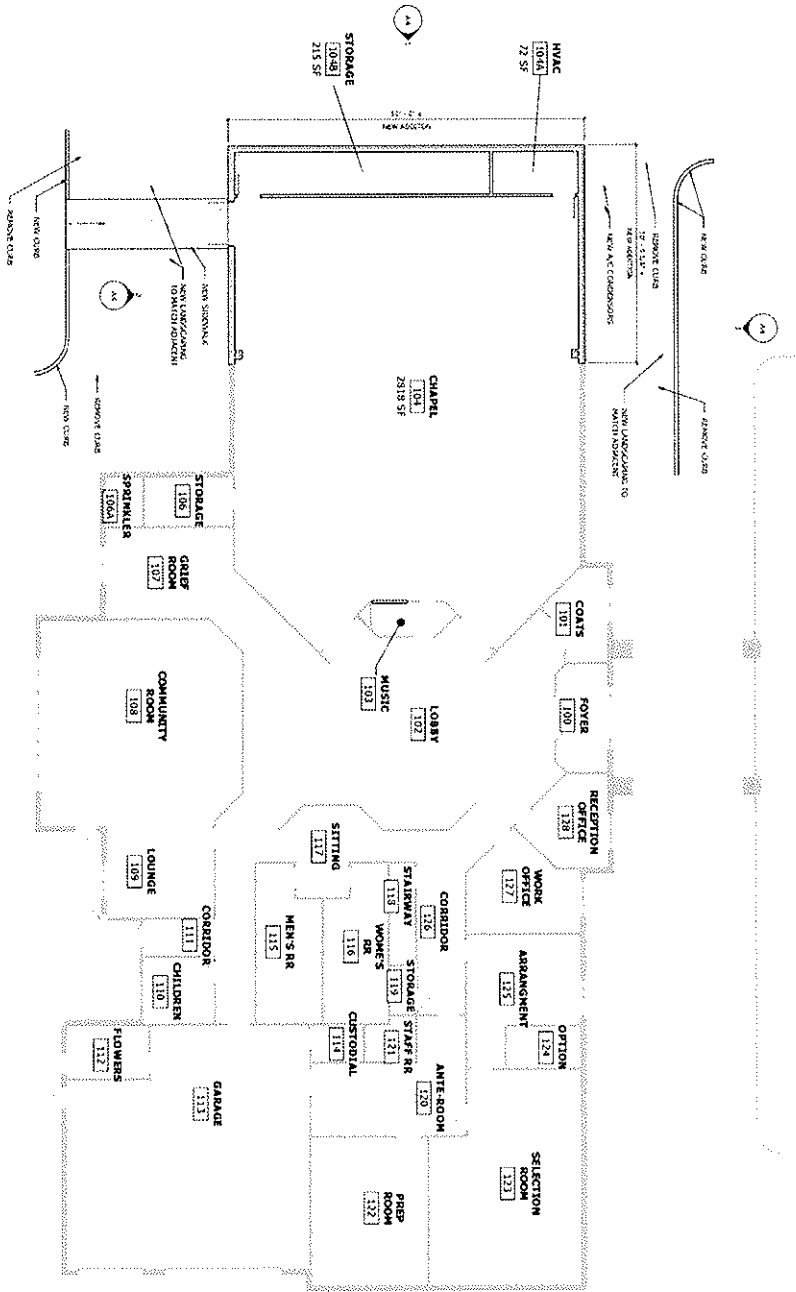
24 PARKING SPACES

TOTAL OF 95 PARKING SPACES

Google

Imagery ©2018 Google, Map data ©2018 Google, United States Terms Send feedback

1 FLOOR PLAN
1/8" = 1'-0"



ICOMA
INTERNATIONAL COUNCIL OF MONUMENTALISTS
1300 N. 17TH AVE. SUITE 100
DENVER, CO 80202
TEL: 303.733.1100
WWW.ICOMA-USA.COM



FLOOR PLAN

KOZLAK-RADULOVICH FUNERAL CHAPEL
1385 107TH AVE NE
BLAINE, MN 55434

PROJECT: 1818S
DRAWN BY: ON
CHECKED BY: SH
DATE: 08/20/2018
REVISIONS:

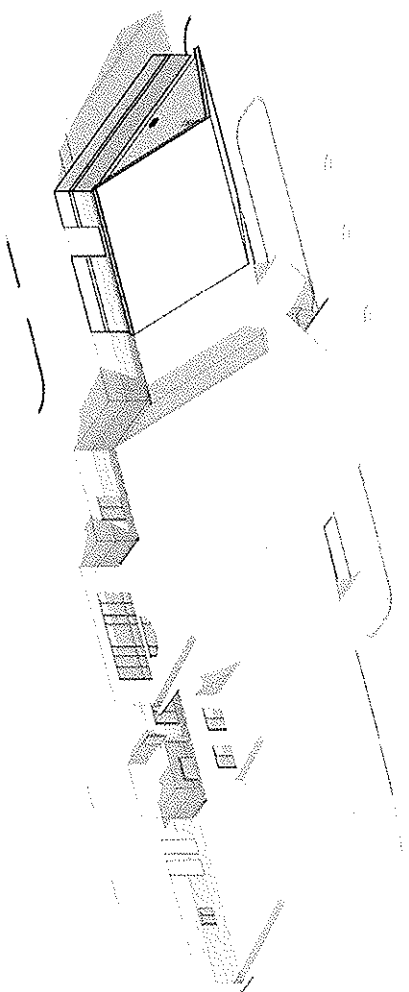
CUP
AMENDMENT

A3

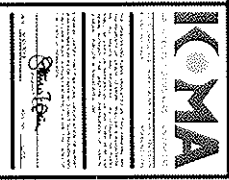
KOZLAK-RADULOVICH FUNERAL CHAPEL CHAPEL EXPANSION PROJECT

1385 107TH AVE NE
BLAINE, MN 55434

CUP AMENDMENT APPLICATION



DRAWING LIST	
NO.	DATE
1	08/28/2018
2	08/28/2018
3	08/28/2018
4	08/28/2018
5	08/28/2018
6	08/28/2018
7	08/28/2018
8	08/28/2018
9	08/28/2018
10	08/28/2018



TITLE SHEET

KOZLAK-RADULOVICH FUNERAL CHAPEL
1385 107TH AVE NE
BLAINE, MN 55434

PROJECT: 18158
DRAWN BY: OOL
CHECKED BY: SSI
DATE: 08/28/2018
REVISIONS:

CUP
AMENDMENT

A1

