

**Case File No. 12-0041**



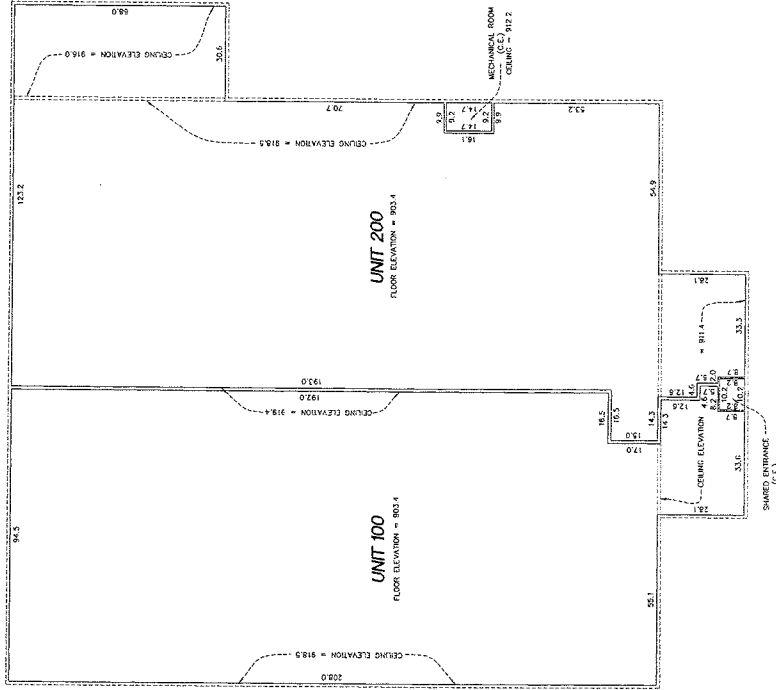


# COMMON INTEREST COMMUNITY NUMBER 306 A CONDOMINIUM TWIN TIDES CIC PLAT

This CIC Plat is part of the Declaration recorded as  
Document Number \_\_\_\_\_  
on this \_\_\_\_\_ day of \_\_\_\_\_, 20\_\_\_\_

**CITY OF BLAINE  
COUNTY OF ANOKA  
SEC. 29, T. 31, R. 23**

## UNIT DETAILS (AS-BUILT)



**LEGEND:**

- C.C. DENOTES COMMON ELEMENT
- L.C. DENOTES UNITED COMMON ELEMENT

ELEVATIONS ARE REFERENCED TO A BENCHMARK SHOWN ON SHEET 1 OF 2 SHEETS AND ARE SHOWN IN TENTHS OF A FOOT.



**NORTH**

GRAPHIC SCALE

