

**Case File No. 13-0014**







DATE: 2-22-13  
 REVISION DESCRIPTION:  
 1-22-13 PROPOSED LOT LINES ADJUSTED

DESIGNED BY: CHARLES W. FLOWE  
 DRAWN BY: CHARLES W. FLOWE  
 CHECKED BY: CHARLES W. FLOWE  
 ORIGINAL DATE: FEBRUARY 17, 2013

1. I HEREBY CERTIFY THAT THIS PLAN WAS PREPARED BY ME OR UNDER MY CLOSE PERSONAL SUPERVISION AND THAT I AM A DULY LICENSED PROFESSIONAL ENGINEER IN THE STATE OF MARYLAND.  
 CHARLES W. FLOWE  
 LICENSE NO. 16937  
 DATE: 2/22/2013

MARQUEST MEADOWS  
 WEST  
 BLAINE, MD

PREPARED FOR:  
 GRADING, DRAINAGE &  
 EROSION CONTROL PLAN

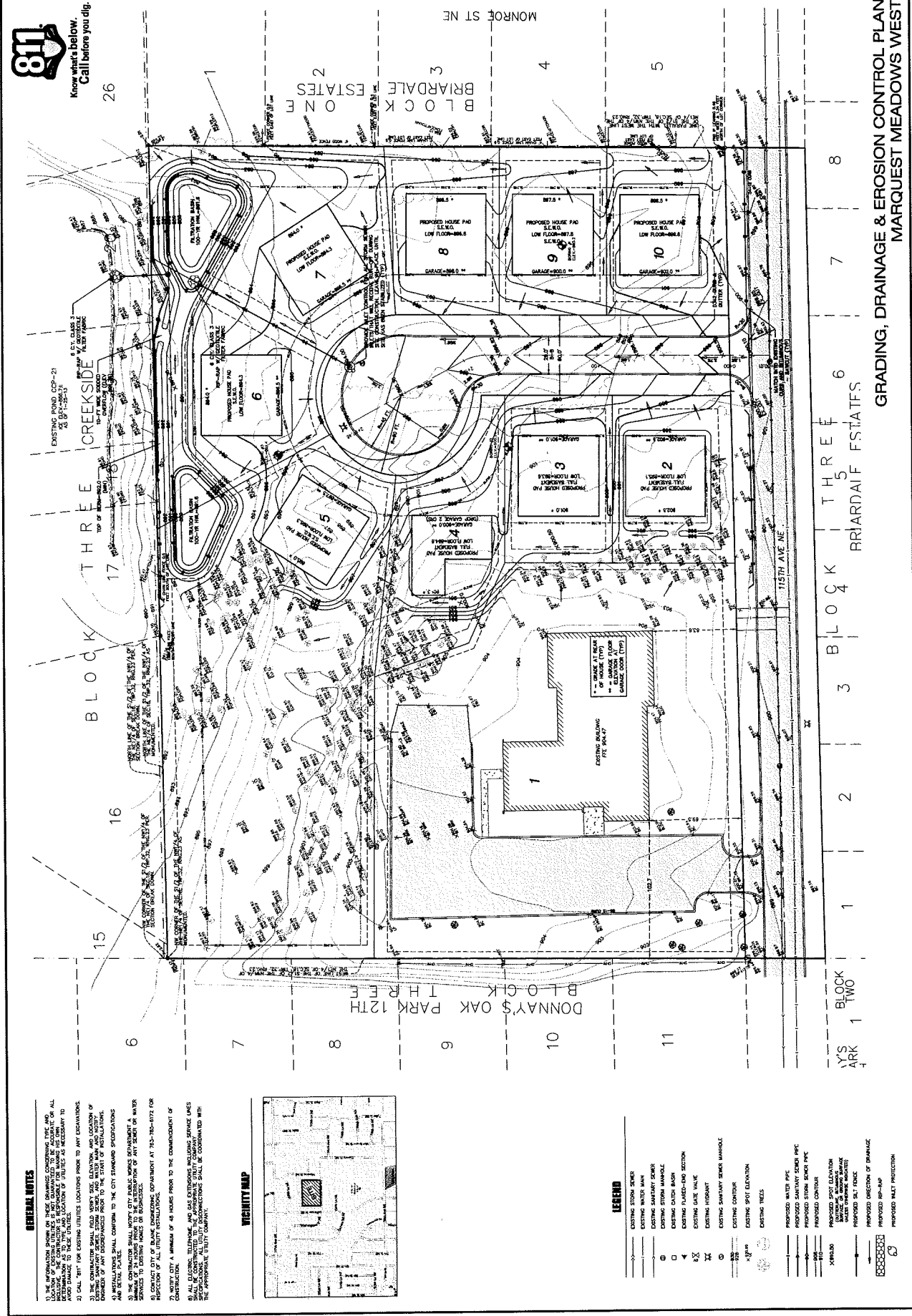
PREPARED FOR:  
 SHADE TREE  
 CONSTRUCTION

811  
 Know what's below.  
 Call before you dig.

PLOWE  
 ENGINEERING, INC.  
 8111 W. 1100 DRIVE  
 LAND LAKE, FL 33494  
 PHONE: 813-941-8810  
 FAX: 813-941-8811  
 WWW.PLOWEENR.COM

NORTH  
 1"=10'-00" FEET

61



GENERAL NOTES:  
 1) THE INFORMATION SHOWN ON THESE DRAWINGS CONCERNING TYPE AND LOCATION OF EXISTING UTILITIES IS BASED ON RECORD DRAWINGS OR ALL INFORMATION AVAILABLE TO THE ENGINEER. IT IS THE RESPONSIBILITY OF THE CONTRACTOR TO VERIFY THE LOCATION OF UTILITIES AS NECESSARY TO AVOID DAMAGE TO UTILITIES.  
 2) CALL "811" FOR EXISTING UTILITIES LOCATIONS PRIOR TO ANY EXCAVATIONS.  
 3) THE CONTRACTOR SHALL FOLD OVER SIZE, ELEVATION, AND LOCATION OF EXISTING UTILITIES TO BE EXCAVATED PRIOR TO THE START OF INSTALLATION. DIMENSIONS OF ANY EXCAVATIONS SHALL BE AS SHOWN ON THESE DRAWINGS AND SHALL BE APPROVED BY THE CITY ENGINEER.  
 4) INSTALLATIONS SHALL CONFORM TO THE CITY STANDARD SPECIFICATIONS AND DETAIL PLATES.  
 5) ALL UTILITIES SHALL BE PROTECTED BY A MINIMUM OF 48" OF SAND OR WATER SERVICE PIPES SHALL BE PROTECTED BY 18" OF SAND OR WATER SERVICE PIPES SHALL BE PROTECTED BY 18" OF SAND OR WATER SERVICE PIPES.  
 6) ALL UTILITIES SHALL BE PROTECTED BY A MINIMUM OF 48" OF SAND OR WATER SERVICE PIPES SHALL BE PROTECTED BY 18" OF SAND OR WATER SERVICE PIPES.  
 7) NOTIFY CITY A MINIMUM OF 48 HOURS PRIOR TO THE COMMENCEMENT OF CONSTRUCTION.  
 8) ALL UTILITIES SHALL BE PROTECTED BY A MINIMUM OF 48" OF SAND OR WATER SERVICE PIPES SHALL BE PROTECTED BY 18" OF SAND OR WATER SERVICE PIPES.  
 9) ALL UTILITIES SHALL BE PROTECTED BY A MINIMUM OF 48" OF SAND OR WATER SERVICE PIPES SHALL BE PROTECTED BY 18" OF SAND OR WATER SERVICE PIPES.



NEIGHBORHOOD MAP

LEGEND  
 EXISTING STORM SEWER  
 EXISTING WATER MAIN  
 EXISTING SANITARY SEWER  
 EXISTING STORM MANHOLE  
 EXISTING CATCH BASIN  
 EXISTING FLOWED-TO SECTION  
 EXISTING GATE VALVE  
 EXISTING HYDRANT  
 EXISTING SANITARY SEWER MANHOLE  
 EXISTING CONDUIT  
 EXISTING SPILT ELEVATION  
 EXISTING TREES  
 PROPOSED WATER PIPE  
 PROPOSED SANITARY SEWER PIPE  
 PROPOSED STORM SEWER PIPE  
 PROPOSED CONDUIT  
 PROPOSED SPILT ELEVATION  
 PROPOSED STORM SEWER MANHOLE  
 PROPOSED GATE VALVE  
 PROPOSED HYDRANT  
 PROPOSED SANITARY SEWER MANHOLE  
 PROPOSED RIP-UP  
 PROPOSED MULCH PROTECTION

15TH AVE NE  
 BLOCK THREE  
 BLOCK FOUR  
 BLOCK FIVE  
 BRIAARDALE ESTATES  
 MARQUEST MEADOWS WEST

MONROE ST NE  
 BLOCK ONE  
 BLOCK TWO  
 BLOCK THREE  
 BLOCK FOUR  
 BLOCK FIVE

15TH AVE NE  
 BLOCK THREE  
 BLOCK FOUR  
 BLOCK FIVE  
 BRIAARDALE ESTATES  
 MARQUEST MEADOWS WEST

15TH AVE NE  
 BLOCK THREE  
 BLOCK FOUR  
 BLOCK FIVE  
 BRIAARDALE ESTATES  
 MARQUEST MEADOWS WEST

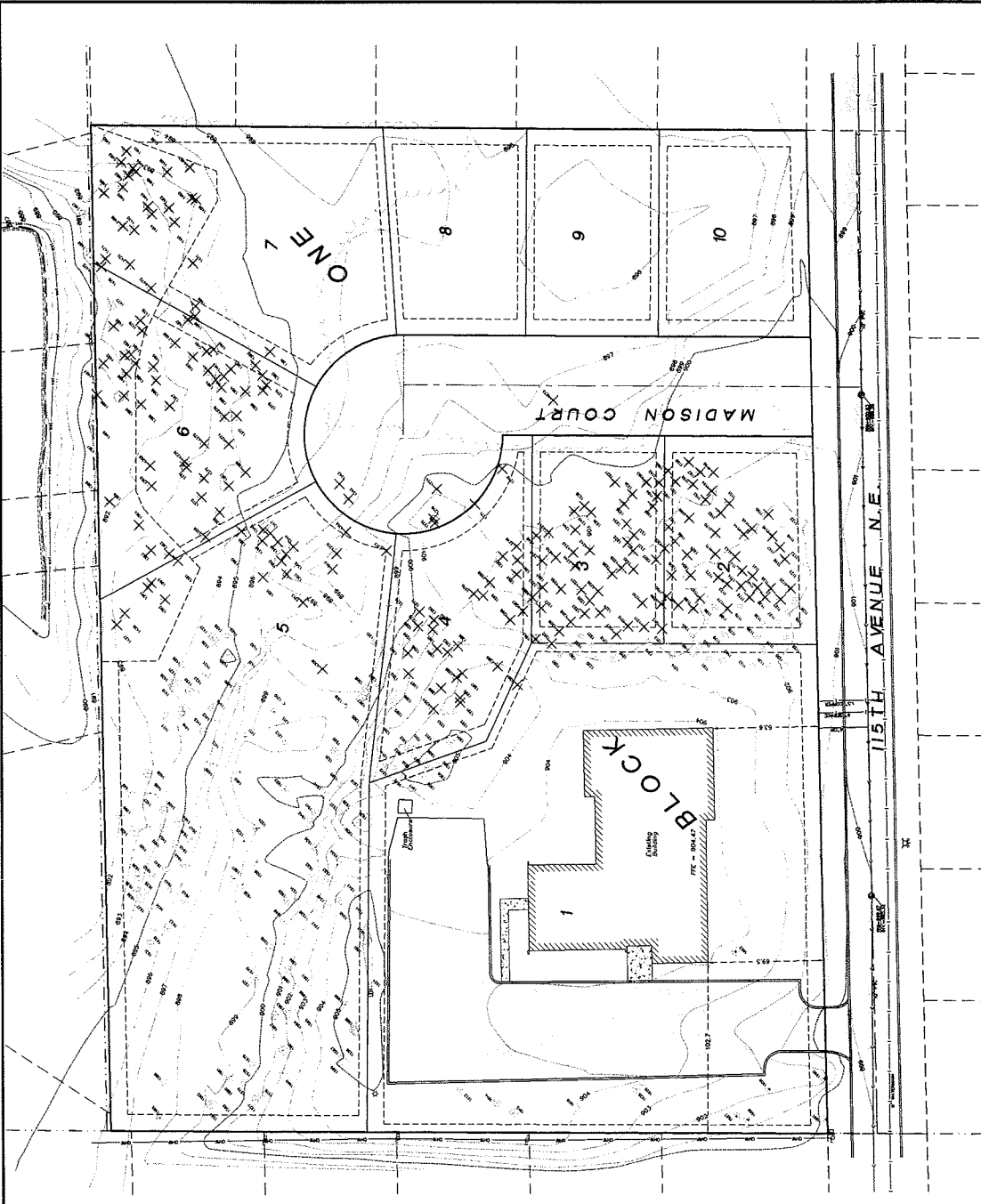
15TH AVE NE  
 BLOCK THREE  
 BLOCK FOUR  
 BLOCK FIVE  
 BRIAARDALE ESTATES  
 MARQUEST MEADOWS WEST

15TH AVE NE  
 BLOCK THREE  
 BLOCK FOUR  
 BLOCK FIVE  
 BRIAARDALE ESTATES  
 MARQUEST MEADOWS WEST

# PRELIMINARY TREE INVENTORY AND TREE REMOVAL PLAN

~of- MARQUEST MEADOWS WEST  
 Applicant: Shade Tree Construction, Inc.  
 23035 Ulysses Street  
 East Bethel, Min 55005  
 Contact: Mark Strandlund  
 (763) 434-7962

LEGEND			TREE INVENTORY LIST			BENCH MARK		
TREE	TRUNK SIZE	TRUNK HEIGHT	TRUNK D.B.H.	TRUNK SPECIES	TRUNK HEALTH	TRUNK D.B.H.	TRUNK SPECIES	TRUNK HEALTH
1	12.0	12.0	12.0	12.0	12.0	12.0	12.0	12.0
2	12.0	12.0	12.0	12.0	12.0	12.0	12.0	12.0
3	12.0	12.0	12.0	12.0	12.0	12.0	12.0	12.0
4	12.0	12.0	12.0	12.0	12.0	12.0	12.0	12.0
5	12.0	12.0	12.0	12.0	12.0	12.0	12.0	12.0
6	12.0	12.0	12.0	12.0	12.0	12.0	12.0	12.0
7	12.0	12.0	12.0	12.0	12.0	12.0	12.0	12.0
8	12.0	12.0	12.0	12.0	12.0	12.0	12.0	12.0
9	12.0	12.0	12.0	12.0	12.0	12.0	12.0	12.0
10	12.0	12.0	12.0	12.0	12.0	12.0	12.0	12.0

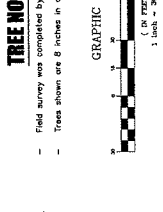


**BENCHMARK**  
 TOP RIGHT INTERIOR LOCATED IN FRONT  
 OF HOUSE AT 830 115th AVENUE.  
 ELEVATION = 903.46

DATE	BY	CHKD BY	DATE
1/27/13	ES	ES	1/29/13
1/27/13	ES	ES	1/29/13
1/27/13	ES	ES	1/29/13
1/27/13	ES	ES	1/29/13

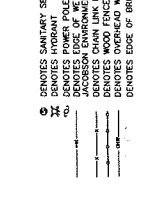
I hereby certify that this survey, plan or report was prepared by me or under my direct supervision and that I am a duly Registered Land Surveyor under the laws of the State of Minnesota.  
 January E. Neuner  
 Date: 02/07/13 License No. 25343

**TREE NOTES**  
 - Field survey was completed by E.C. Rud and Sons, Inc. on 02/06/13.  
 - Trees shown are 8 inches in diameter or larger.



**LEGEND**  
 DENOTES EXISTING 5 FOOT CONTOUR INTERVAL  
 DENOTES EXISTING 10 FOOT CONTOUR INTERVAL  
 DENOTES EXISTING SANITARY SEWER  
 DENOTES EXISTING WATER MAIN  
 DENOTES CONCRETE SURFACE  
 DENOTES BITUMINOUS SURFACE  
 DENOTES PROPOSED TREE REMOVAL

**LEGEND**  
 DENOTES SANITARY SEWER MANHOLE  
 DENOTES POWER POLE  
 DENOTES EDGE OF WET LAND AS DELINEATED BY ALC ON 7-1-11  
 DENOTES CHAIN LINK FENCE  
 DENOTES WOOD FENCE  
 DENOTES SIDE OF BRUSH



**E.C. RUD & SONS, INC.**  
 Professional Land Surveyors  
 6776 Lake Drive NE, Suite 110  
 Uino Lakes, MN 55014  
 Tel: (651) 361-8200 Fax: (651) 361-8701

ANOKA COUNTY, MINNESOTA  
 (NO SCALE)

1307595