

**Case File No. 16-0010**





3/09/2016

Centennial School District No. 12  
4707 North Road  
Circle Pines, MN 55014

RE: City of Blaine Conditional Use Permit

Attached you will find a site layout (C1). Noted in red, on the drawing, are improvements being made to the site during this upcoming construction season. Listed below are the general descriptions to the notes on the drawing which are numbered accordingly, matching the notes on the drawing.

Many of the changes being made will improve the overall traffic flow at the school and alleviate some of the traffic burden on North Road.

1. Centennial Elementary School bus parking moved.
  - a. The existing parking spaces will be removed and the area marked for school bus pick-up and drop off only.
2. Centennial Elementary School new parent pick-up and drop-off area and service driveway.
  - a. This new parent drop-off and pick-up site will provide a bus only area in front of Centennial Elementary. The service driveway access will allow the school to close the driveway between the two High school buildings to car traffic during the day. (see note #11)
3. Reconfiguration of the existing campus softball fields.
  - a. With the improvements to the service driveway the existing ball fields will need to be reconfigured.
4. New natural grass practice and physical education space.
  - a. With the additional land acquired on 103<sup>rd</sup> Lane this space will provide a new natural grass field for practice and physical education use as well.
5. New parking spaces added to stadium area.
  - a. This space will add 171 new parking spaces with access to 103<sup>rd</sup> Lane. This will allow for a reduction in the amount of traffic on North Road at dismissal and following sporting events.
6. Potential additional parking.
  - a. An additional 116 parking spaces are being planned as an alternate at bid time. If the budget allows, they will be added to the scope of work at the time of construction. If not, the area will become a "future additional parking" area.
7. New turf field.
  - a. A new turf field will be installed for the use of physical education activities and the space will also be available for sub varsity events. No lighting is planned for this area as part of this project.
8. Additional parking.
  - a. This area will provide an additional 46 parking spaces to the existing parking area off of 103<sup>rd</sup> lane.
9. New special needs bus turn-around.
  - a. Reconfiguration of the existing parking area will provide an exclusive area for the special needs buses turn around, drop-off and pick-up.

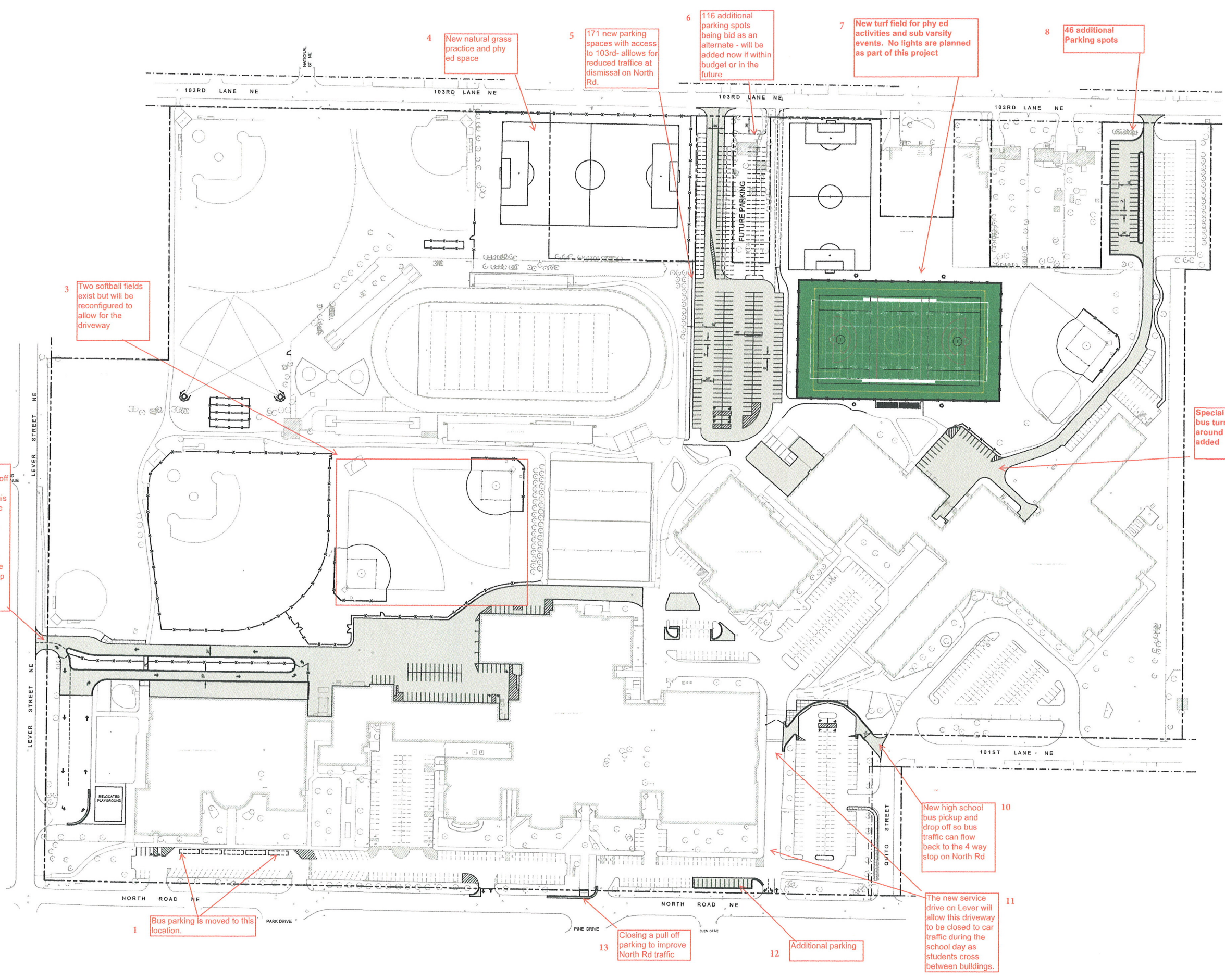


10. New high school bus pick-up and drop-off area.
  - a. This new school bus pick-up and drop-off area will be designed to flow the bus traffic back to the 4 way stop on North Road.
11. New service drive added.
  - a. A new service drive is added off of Lever Street (see note #2) for elementary student drop-off and pick-up. This will allow the driveway between the two high school buildings to be closed to vehicle traffic during the day for safe travel of students between the two high school buildings.
12. Additional parking.
  - a. This space will allow additional student parking at the High School.
13. Removal of the pull off parking area on North road.
  - a. This will improve traffic flow on North Road and alleviate traffic safety concerns.

If you have any questions or concerns please feel free to reach out to me via phone 651-755-0011 or email [bseiberlich@nexussolutions.com](mailto:bseiberlich@nexussolutions.com).

Respectfully,

Brett Seiberlich  
Project Manager  
Nexus Solutions



**Larson Engineering, Inc.**  
3524 Labore Road  
White Bear Lake, MN 55110  
651.481.9120 (F) 651.481.9201  
www.larsonengr.com

**CENTENNIAL PUBLIC SCHOOL**  
4707 NORTH ROAD  
CIRCLE PINES, MN 55014

**2016 PAVEMENT IMPROVEMENTS**  
CENTENNIAL HIGH SCHOOL  
4757 NORTH ROAD  
CIRCLE PINES, MN 55014

I hereby certify that this plan, specifications or report was prepared by me or under my direct supervision and that I am a duly licensed Professional Engineer under the laws of the state of Minnesota.

Michael A. Murphy, P.E.  
Date: 02.05.16 Reg. No.: 42808

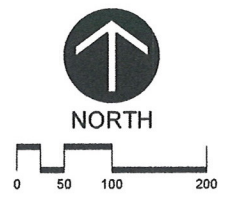
Rev.	Date	Description

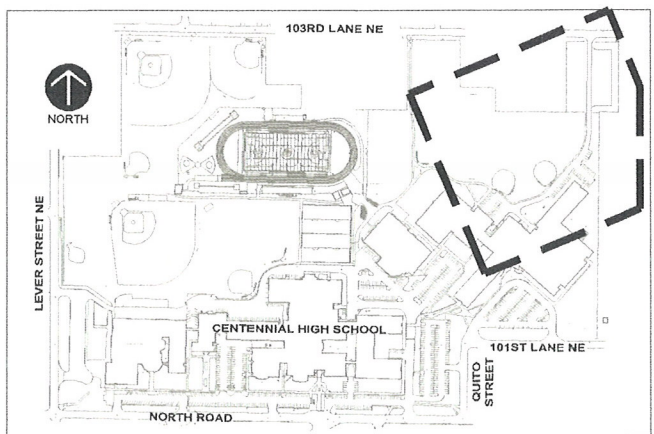
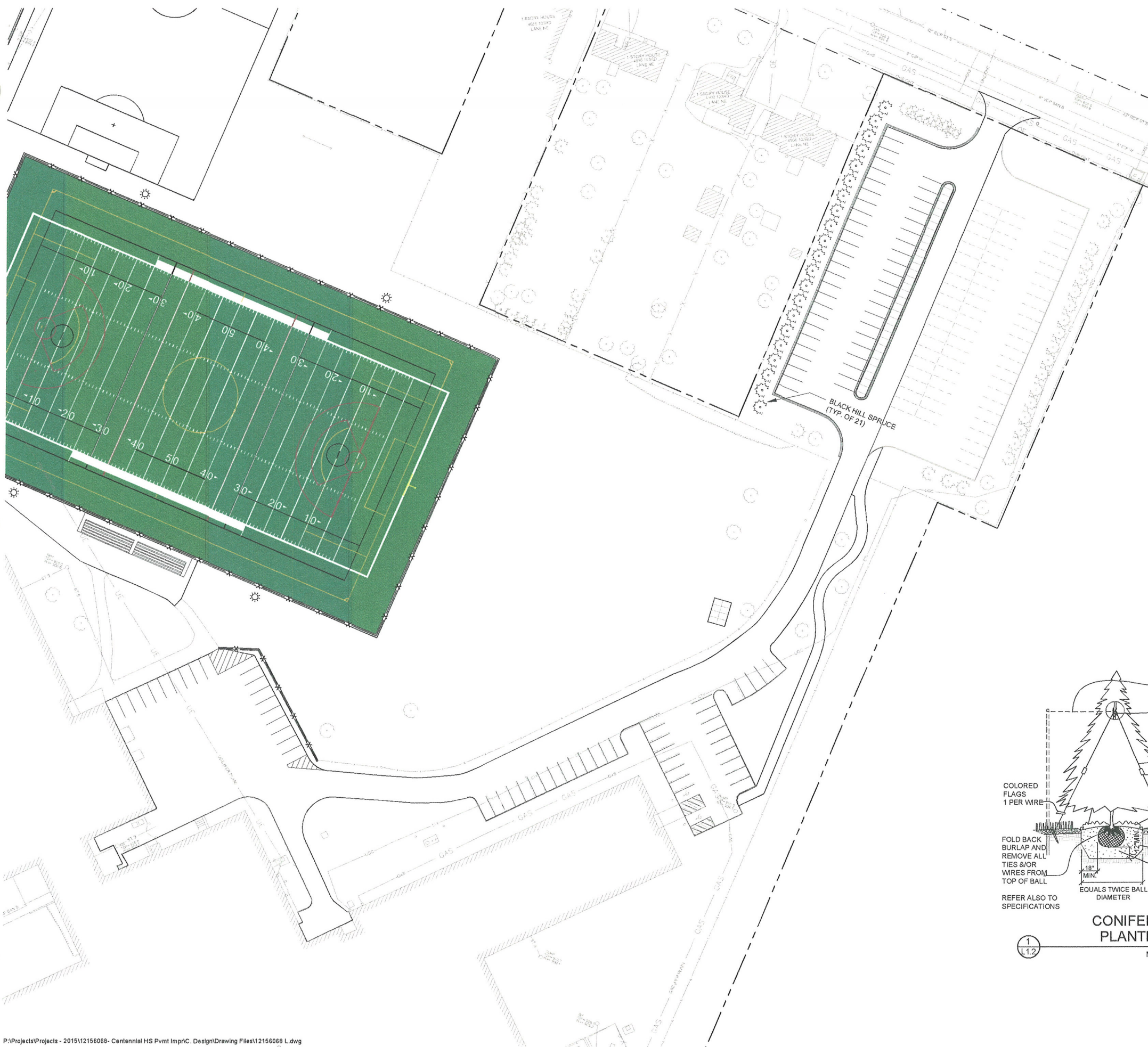
Project #: 12156068  
Drawn By: KBK  
Checked By: JAN  
Issue Date: 02.05.16  
Sheet Title:

**SITE LAYOUT**

**C1**

Sheet: of





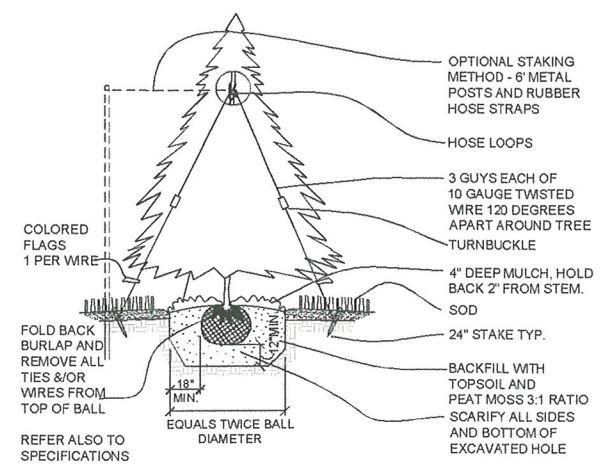
KEY PLAN  
NOT TO SCALE

**SYMBOL LEGEND**

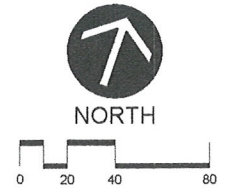
- BLACK HILL SPRUCE, 6' MIN. HEIGHT  
SEE DETAIL 1/L1.2

**LANDSCAPING NOTES**

- CONTACT GOPHER STATE ONE-CALL PRIOR TO WORK.
- PROTECT ALL EXISTING UTILITIES FROM DAMAGE.
- LOOSEN SUBSOILS AFTER EXCAVATION, PRIOR TO ADDING PLANTING MEDIA TO A DEPTH OF 6".
- REPLACE AND/OR REPAIR ANY PRIVATE UNDERGROUND SPRINKLER LINES OR HEADS DISTURBED DURING CONSTRUCTION.
- REPAIR ALL AREAS OF DISTURBED TURF AFFECTED DURING CONSTRUCTION.



CONIFEROUS TREE PLANTING DETAIL  
NO SCALE



**Larson Engineering, Inc.**  
3524 Labore Road  
White Bear Lake, MN 55110  
651.481.9120 (F) 651.481.9201  
www.larsonengr.com

Client:

**CENTENNIAL PUBLIC SCHOOL**  
4707 NORTH ROAD  
CIRCLE PINES, MN 55014

Project Title:

**2016 PAVEMENT IMPROVEMENTS**  
CENTENNIAL HIGH SCHOOL  
4757 NORTH ROAD  
CIRCLE PINES, MN 55014

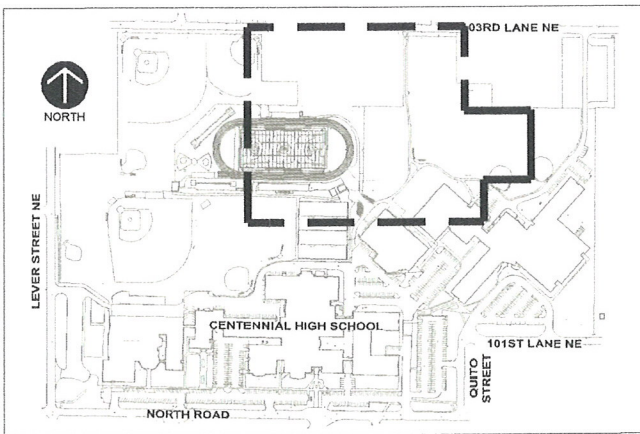
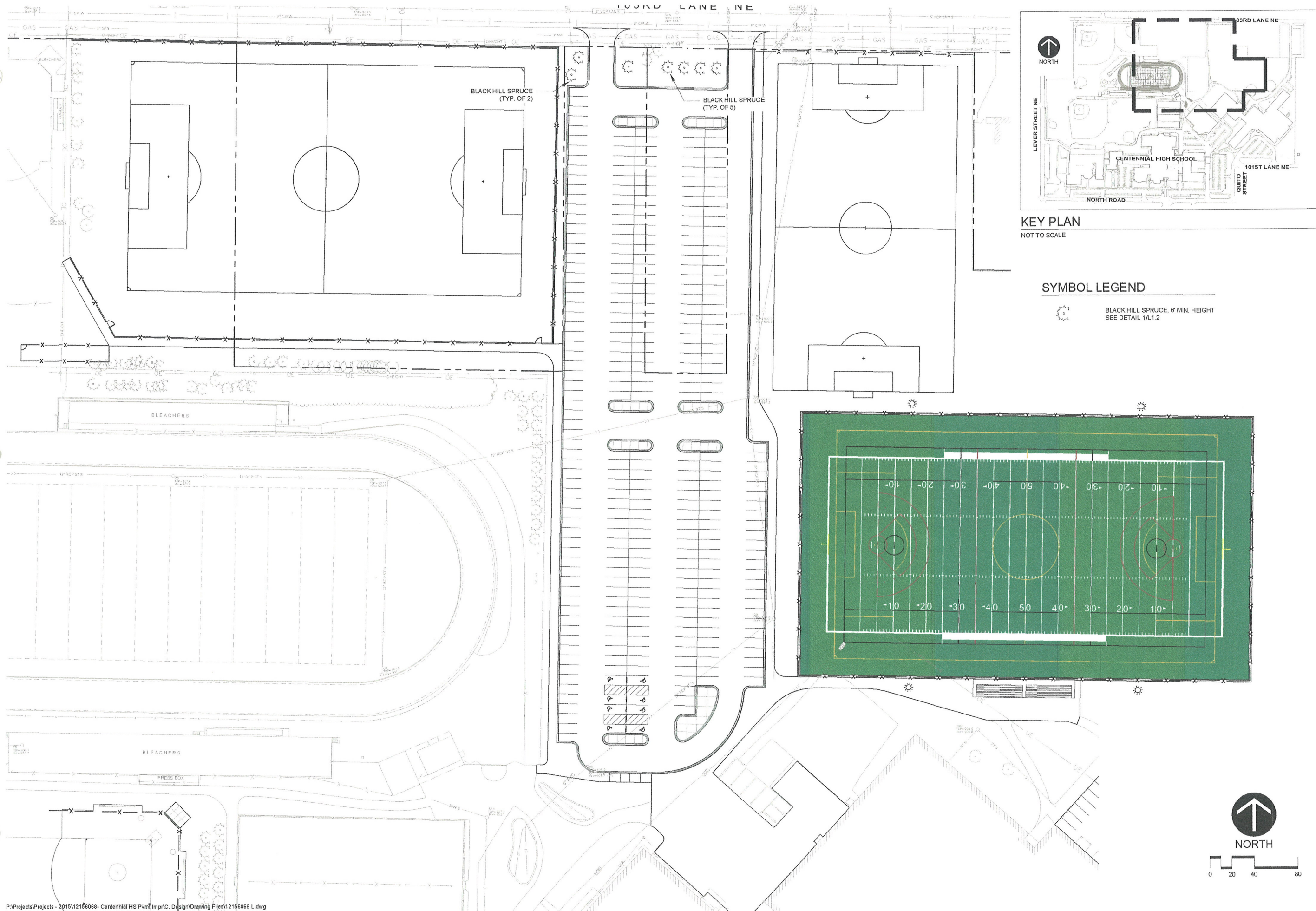
I hereby certify that this plan, specifications or report was prepared by me or under my direct supervision and that I am a duly licensed Professional Engineer under the laws of the state of Minnesota.

Michael A. Murphy, P.E.  
Date: \_\_\_\_\_ Reg. No.: 42808

Rev.	Date	Description

Project #: 12156068  
Drawn By: KBK  
Checked By: JAN  
Issue Date: 03.11.16  
Sheet Title:  
**NORTHEAST LANDSCAPE PLAN**

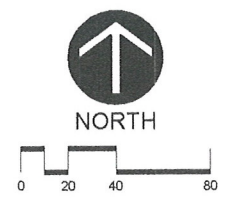
**L1.2**  
Sheet: # of 23



KEY PLAN  
NOT TO SCALE

**SYMBOL LEGEND**

BLACK HILL SPRUCE, 6' MIN. HEIGHT  
SEE DETAIL 1/L.1.2



**Larson Engineering, Inc.**  
3524 Labore Road,  
White Bear Lake, MN 55110  
651.481.9120 (F) 651.481.9201  
www.larsonengr.com

**CENTENNIAL PUBLIC SCHOOL**  
4707 NORTH ROAD  
CIRCLE PINES, MN 55014

**2016 PAVEMENT IMPROVEMENTS**  
CENTENNIAL HIGH SCHOOL  
4757 NORTH ROAD  
CIRCLE PINES, MN 55014

I hereby certify that this plan, specifications or report was prepared by me or under my direct supervision and that I am a duly licensed Professional Engineer under the laws of the state of Minnesota.

Michael A. Murphy, P.E.  
Date: \_\_\_\_\_ Reg. No.: 42808

Rev.	Date	Description

Project #: 12156068  
Drawn By: KBK  
Checked By: JAN  
Issue Date: 03.11.16

Sheet Title:  
**NORTH LANDSCAPE PLAN**

**L1.3**

Sheet: # of 23