

**Case File No. 14-0024**

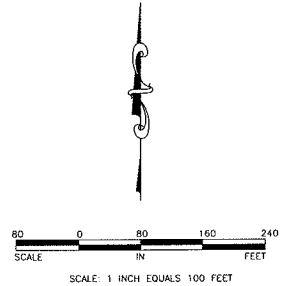
Blaine Planning Department / 10801 Town Square Dr NE / Blaine, MN 55449 / (763) 785-6180



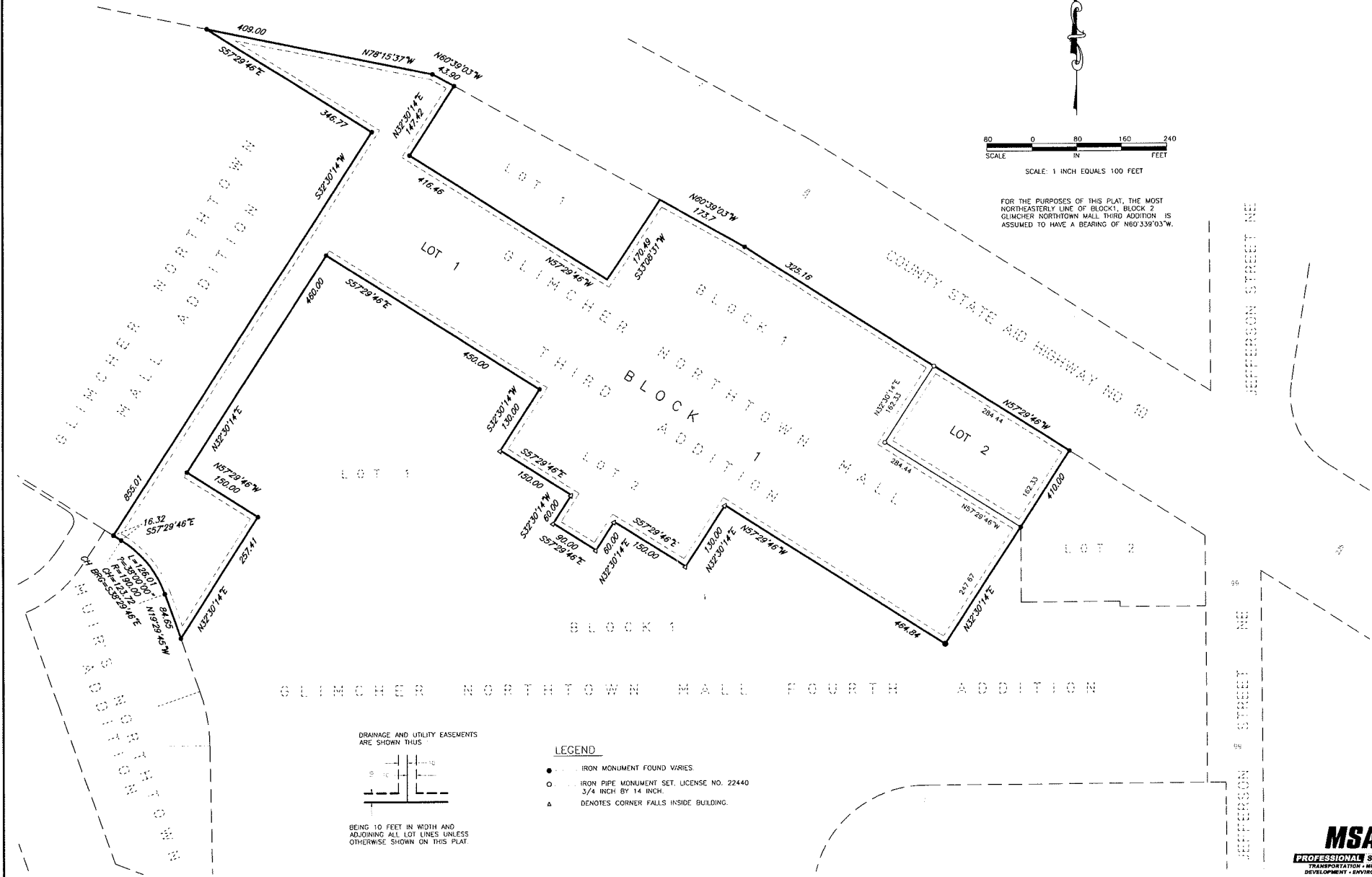


PRELIMINARY PLAT OF:  
**GLIMCHER NORTHTOWN MALL FIFTH ADDITION**

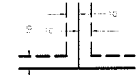
CITY OF BLAINE  
 COUNTY OF ANOKA  
 SEC. 31, TWP. 31, RGE. 23



FOR THE PURPOSES OF THIS PLAT, THE MOST NORTHEASTERLY LINE OF BLOCK 1, BLOCK 2, GLIMCHER NORTHTOWN MALL THIRD ADDITION IS ASSUMED TO HAVE A BEARING OF N60°33'03"W.



DRAINAGE AND UTILITY EASEMENTS ARE SHOWN THUS



BEING 10 FEET IN WIDTH AND ADJOINING ALL LOT LINES UNLESS OTHERWISE SHOWN ON THIS PLAT

**LEGEND**

- IRON MONUMENT FOUND VARIES.
- IRON PIPE MONUMENT SET, LICENSE NO. 22440 3/4 INCH BY 14 INCH.
- △ DENOTES CORNER FALLS INSIDE BUILDING.

