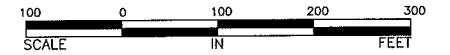


# GLIMCHER NORTHTOWN MALL FOURTH ADDITION

CITY OF BLAINE  
ANOKA COUNTY, MINNESOTA  
SEC. 31, TWP. 31, RGE 23



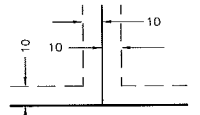
SCALE: 1 INCH EQUALS 100 FEET

FOR THE PURPOSES OF THIS PLAT, THE MOST NORTHERLY  
LINE OF LOT 4, BLOCK 2 MUIR'S NORTHTOWN ADDITION  
IS ASSUMED TO HAVE A BEARING OF N57°29'46"W.

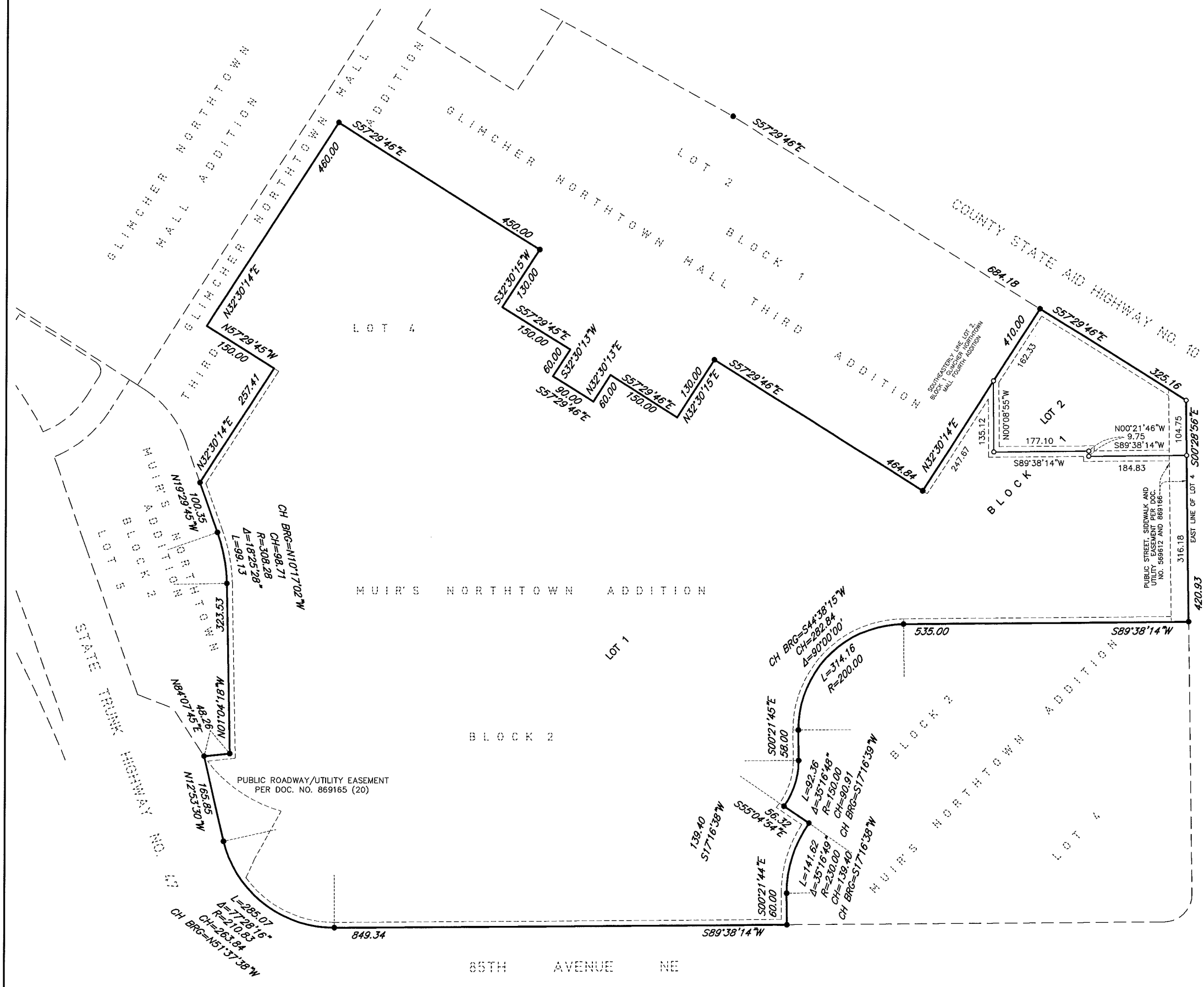
### LEGEND

- ..... IRON MONUMENT FOUND
- ..... IRON PIPE MONUMENT SET

DRAINAGE AND UTILITY EASEMENTS  
ARE SHOWN THUS :



BEING 10 FEET IN WIDTH AND ADJOINING  
ALL LOT LINES UNLESS OTHERWISE SHOWN  
ON THE PLAT.



**CONSULTING ENGINEERS & SURVEYORS**  
SOUTH OFFICE:  
60 PLATO BOULEVARD EAST, SUITE 140, ST. PAUL, MN (612) 548-3140  
NORTH OFFICE:  
11040-183RD CIRCLE NW, STE. A, ELK RIVER, MN (651) 334-8413