

Case File No. 05-96



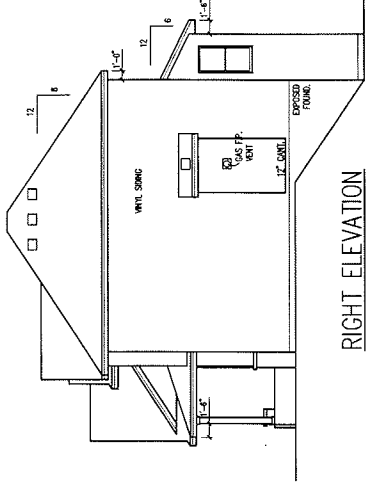
© 2012 T.J.B. HOMES, INC.
 UNAUTHORIZED USE OF THE PLAN
 IS A VIOLATION OF THE U.S.
 COPYRIGHT ACT
 (753) 786-8844

T.J.B. HOMES INC.
 BLAINE, MN 55425
 SUITE 102 - 9100 BALTIC STREET N.E. - BLAINE MN 55448

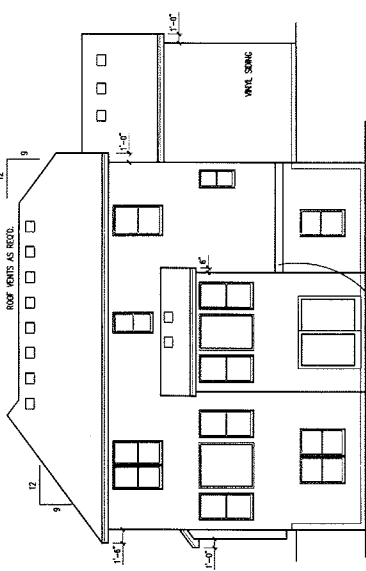
DATE: 1-4-12
 REVISIONS:
 1-18-12

DRAWN BY: JK
 COMM. NO. 189173
 SHEET NO. 1

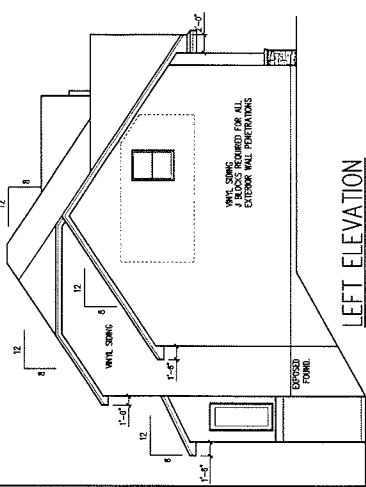
T8111 T8113 T8152



LEFT ELEVATION
 SCALE: 1/8" = 1'-0"



RIGHT ELEVATION
 SCALE: 1/8" = 1'-0"



FRONT ELEVATION
 SCALE: 1/4" = 1'-0"

SHIMULES

- * EXPOSED FOAM TO BE INSTALLED AS NOTED
- * EXTERIOR WALL FINISHES TO MATCH EXTERIOR WALL FINISHES
- * FLASHING IS INSTALLED PRIOR TO FINISHING
- * COMPARTER TO FLASH ALL EXTERIOR WINDOWS AND DOORS PER TO MIC & B.C. CODE REQUIREMENTS

5" TYP. BOARD TYP.
 4" TYP.
 5" HORIZ. BOARD 5"

SHIMULES

5" HORIZ. BOARD 5"

SHIMULES

5" HORIZ. BOARD 5"

SHIMULES

5" HORIZ. BOARD 5"

SHIMULES

5" HORIZ. BOARD 5"

SHIMULES

WARNING:
 THESE PLANS ARE THE CREATIVE IDEAS OF
 T.J.B. HOMES, INC. ANY UNAUTHORIZED USE,
 REPRODUCTION OR COPYING FOR USE ON A
 PROJECT OTHER THAN THAT FOR WHICH THE
 ANY VIOLATION WILL RESULT IN PROSECUTION
 TO THE FULLEST EXTENT AS ALLOWED BY LAW.

PLEASE SIGN & RETURN THE
 ORIGINAL TO:
 T.J.B. HOMES, INC.
 THANKS YOU

DATE: 1-4-12
 REVISIONS:
 1-18-12

11676 ST. ANDREWS CIRCLE NE
 LOT 6 BLK. 3 ST. ANDREWS VILLAGE
 BLAINE, MN

FRONT ELEVATION
 SCALE: 1/4" = 1'-0"
 11676 ST. ANDREWS CIRCLE NE
 LOT 6 BLK. 3 ST. ANDREWS VILLAGE
 BLAINE, MN 55448

LEFT ELEVATION
 SCALE: 1/8" = 1'-0"

RIGHT ELEVATION
 SCALE: 1/8" = 1'-0"

MANUF. STONE VENEER

5" HORIZ. BOARD 5"

SHIMULES

5" HORIZ. BOARD 5"

SHIMULES

5" HORIZ. BOARD 5"

SHIMULES

5" HORIZ. BOARD 5"

SHIMULES

5" HORIZ. BOARD 5"

SHIMULES

5" HORIZ. BOARD 5"

SHIMULES

5" HORIZ. BOARD 5"

5" HORIZ. BOARD 5"

SHIMULES

5" HORIZ. BOARD 5"

SHIMULES

5" HORIZ. BOARD 5"

SHIMULES

5" HORIZ. BOARD 5"

5" HORIZ. BOARD 5"

SHIMULES

5" HORIZ. BOARD 5"

SHIMULES

5" HORIZ. BOARD 5"

SHIMULES

5" HORIZ. BOARD 5"

5" HORIZ. BOARD 5"

SHIMULES

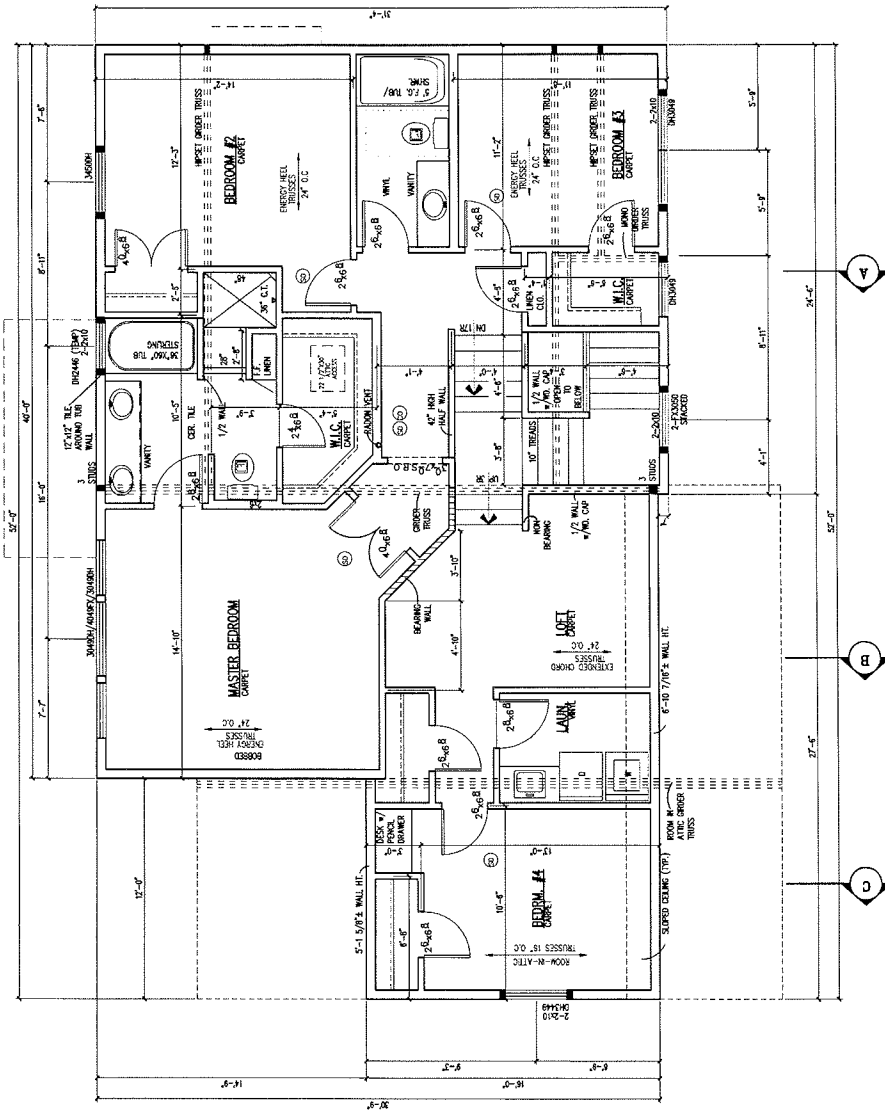
5" HORIZ. BOARD 5"

SHIMULES

5" HORIZ. BOARD 5"

SHIMULES

5" HORIZ. BOARD 5"



- ARCHITECT HAS VISITED WORKSITE
- OWNER TO VERIFY ALL WORK DONE & C.O. NOTED
- 6-1/2\"

SECOND FLOOR PLAN
SCALE: 1/4" = 1'-0"

- NOTES:**
1. ALL WORK SHALL BE DONE IN ACCORDANCE WITH THE CITY OF CHICAGO ORDINANCES AND THE NATIONAL BUILDING CODE.
 2. ALL WORK SHALL BE DONE IN ACCORDANCE WITH THE CITY OF CHICAGO ORDINANCES AND THE NATIONAL BUILDING CODE.
 3. ALL WORK SHALL BE DONE IN ACCORDANCE WITH THE CITY OF CHICAGO ORDINANCES AND THE NATIONAL BUILDING CODE.
 4. ALL WORK SHALL BE DONE IN ACCORDANCE WITH THE CITY OF CHICAGO ORDINANCES AND THE NATIONAL BUILDING CODE.
 5. ALL WORK SHALL BE DONE IN ACCORDANCE WITH THE CITY OF CHICAGO ORDINANCES AND THE NATIONAL BUILDING CODE.

DATE: 1-4-12
 REVISIONS: 1-03-12

DRAWN BY: JK
 COMM. NO. 0817/3
 SHEET NO. 4

PLEASE SIGN & RETURN THE OFFICE COPY. THANK YOU!

WARNING:
 THESE PLANS ARE THE ORIGINAL IDEAS OF THE ARCHITECT. ANY REPRODUCTION OR COPYING FOR USE ON A PLAN OR NEW HOME IS STRICTLY FORBIDDEN. THE ARCHITECT ASSUMES NO LIABILITY TO THE FULLEST EXTENT AS ALLOWED BY LAW.

© 2012 T.S. HOKES, INC.
 UNAUTHORIZED USE OF THE PLAN IS A VIOLATION OF THE U.S. COPYRIGHT ACT