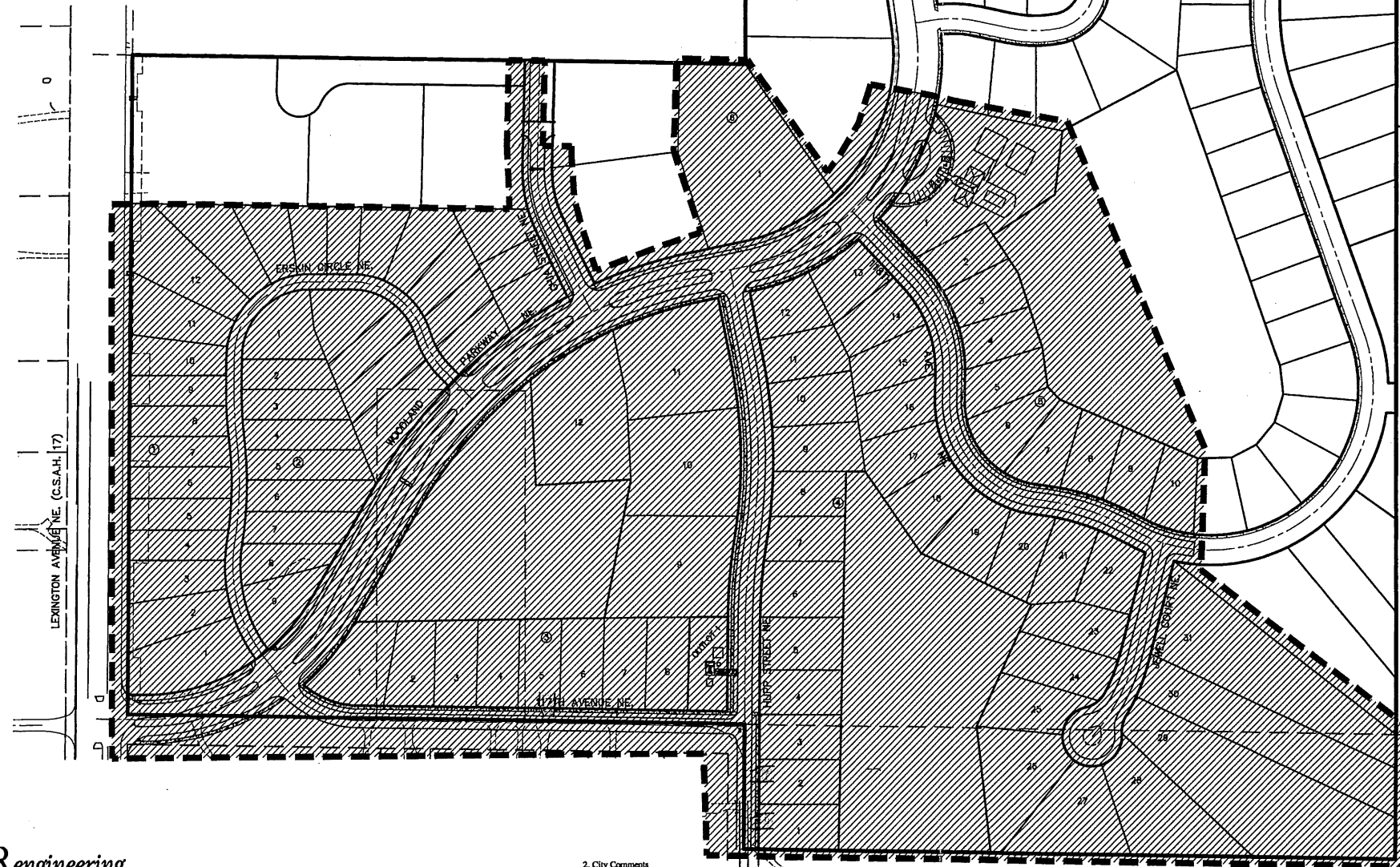
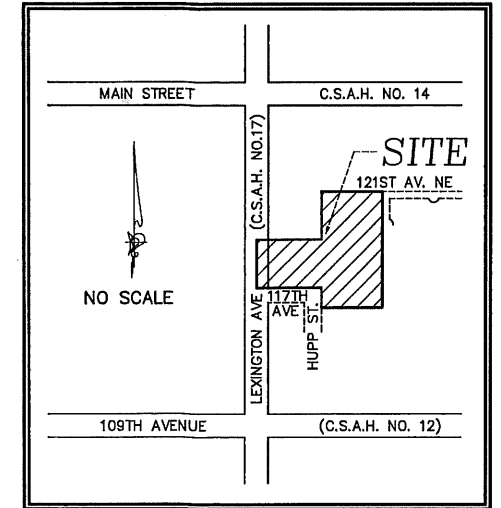


WOODLAND VILLAGE PUBLIC IMPROVEMENTS

SIDEWALK, TRAIL & STREET OVERLAY

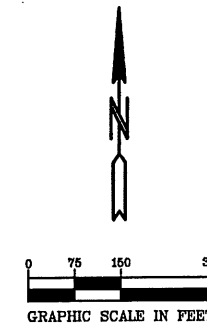
CITY PROJECT NO. 11-20 BLAINE, MINNESOTA

LOCATION MAP



SHEET INDEX

1. COVER SHEET
2. INDEX SHEET
3. STREET CONSTRUCTION
GARDENWOOD PARKWAY NE.
4. STREET/STORM CONSTRUCTION
GARDENWOOD PARKWAY NE. & GHA STREET NE.
5. STREET CONSTRUCTION
117TH AVENUE NE & JEWELL COURT NE.
6. STREET CONSTRUCTION
ERSKIN CIRCLE NE.
7. STREET CONSTRUCTION
HUPP STREET NE.
8. STREET CONSTRUCTION
118TH AVENUE NE.
9. STREET CONSTRUCTION
JEWELL COURT NE.
10. SIGNING AND STRIPING PLAN
11. DETAILS



BENCHMARK

CAST IRON MONUMENT AT THE
SOUTHEAST CORNER OF SECTION 12,
TOWNSHIP 31, RANGE 23.
ELEV=904.48

CAST IRON MONUMENT AT THE EAST
QUARTER CORNER OF SECTION 12,
TOWNSHIP 31, RANGE 23.
ELEVATION=902.79

Prior to any excavation the contractor shall verify the
location of all underground utilities.
Call 48 Hours before digging:
GOPHER STATE ONE CALL
Twin City Area 651-454-0002
Mn. Toll Free 1-800-252-1166

L:\Projects\1120-Blaine\Woodland Village\Drawings\1120-Blaine\Woodland Village\1120-Blaine\1120-Blaine.dwg
 Date: 3/20/12
 User: Paul J. Charle
 Plot Date: 3/20/12
 Plot Time: 10:17:12 AM
 Plot Path: L:\Projects\1120-Blaine\Woodland Village\Drawings\1120-Blaine\Woodland Village\1120-Blaine.dwg

PIONEER Engineering
CIVIL ENGINEERS LAND PLANNERS LAND SURVEYORS LANDSCAPE ARCHITECTS

2422 Enterprise Drive
Mendota Heights, MN 55120
(651)681-1914 Fax:681-9488

Coon Rapids Office

201 85th Avenue N.W.
Coon Rapids, MN 55433
(763) 783-1880 Fax:783-1883

I hereby certify that this plan was prepared by
me or under my direct supervision and that I
am a duly Licensed Professional Engineer
under the laws of the State of Minnesota.

Name: *Paul J. Charle*
Paul J. Charle
1960
Date: 3/20/12

2 City Comments
1 City Comments

Revisions
1. 2-27-12
2. 3-28-12

Date: 1/20/12
Designed: P.J.C.
Drawn: JMM

COVER SHEET

CITY OF BLAINE
10801 TOWN SQUARE DRIVE NE
BLAINE, MINNESOTA 55449

WOODLAND VILLAGE
BLAINE, MINNESOTA

1 OF 11