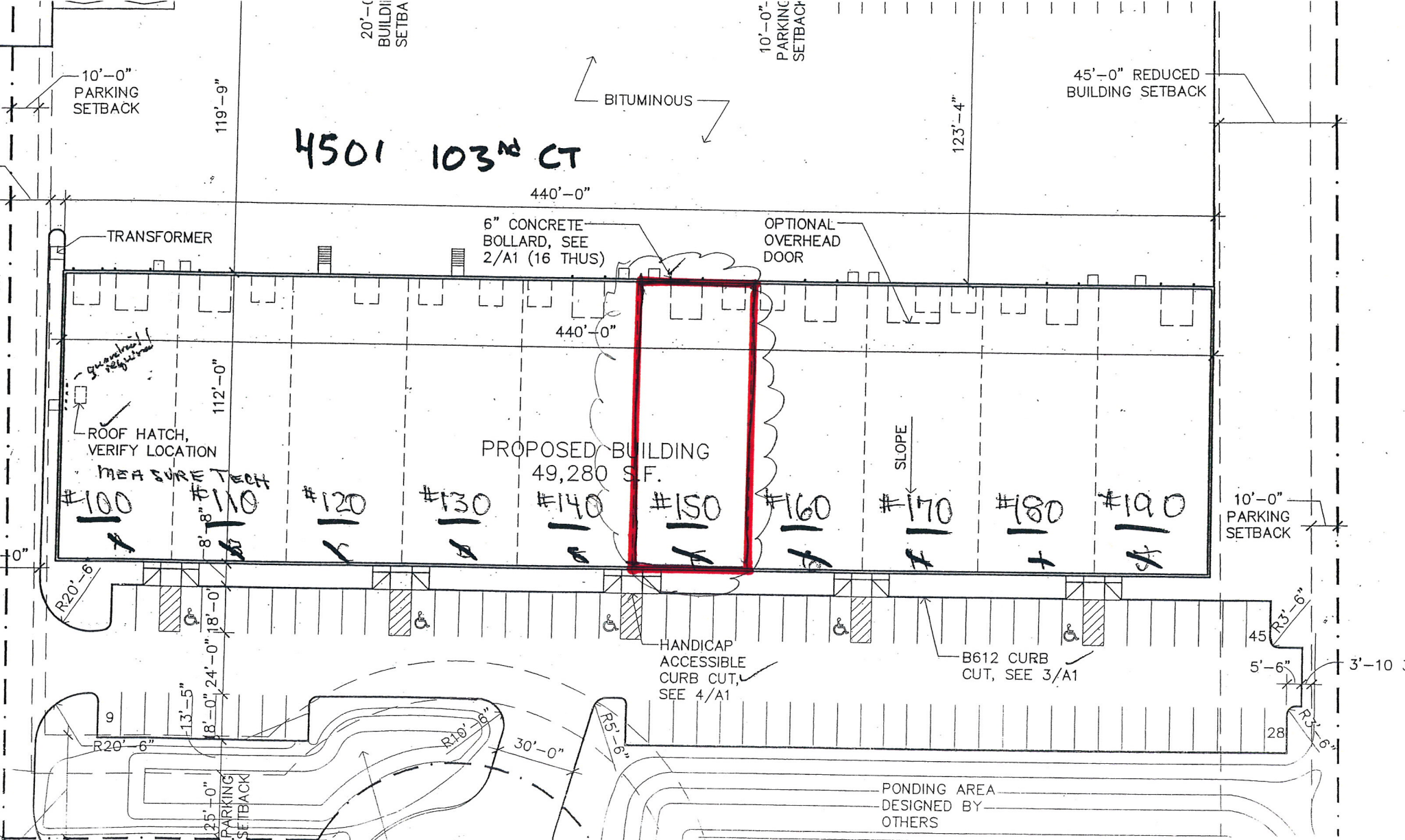


Case File No. 14-0069

Blaine Planning Department / 10801 Town Square Dr NE / Blaine, MN 55449 / (763) 785-6180





4501 103RD CT

6" CONCRETE BOLLARD, SEE 2/A1 (16 THUS)

OPTIONAL OVERHEAD DOOR

PROPOSED BUILDING
49,280 SF.

#100 #110 #120 #130 #140 #150 #160 #170 #180 #190

HANDICAP ACCESSIBLE CURB CUT, SEE 4/A1

B612 CURB CUT, SEE 3/A1

PONDING AREA
DESIGNED BY
OTHERS

10'-0" PARKING SETBACK

20'-0" BUILDING SETBACK

10'-0" PARKING SETBACK

45'-0" REDUCED BUILDING SETBACK

BITUMINOUS

123'-4"

10'-0" PARKING SETBACK

R20'-6"

5'-6"

R3'-6"

3'-10 3/4"

119'-9"

112'-0"

18'-0"

13'-5"

25'-0"

30'-0"

R5'-6"

R10'-6"

9

45

28

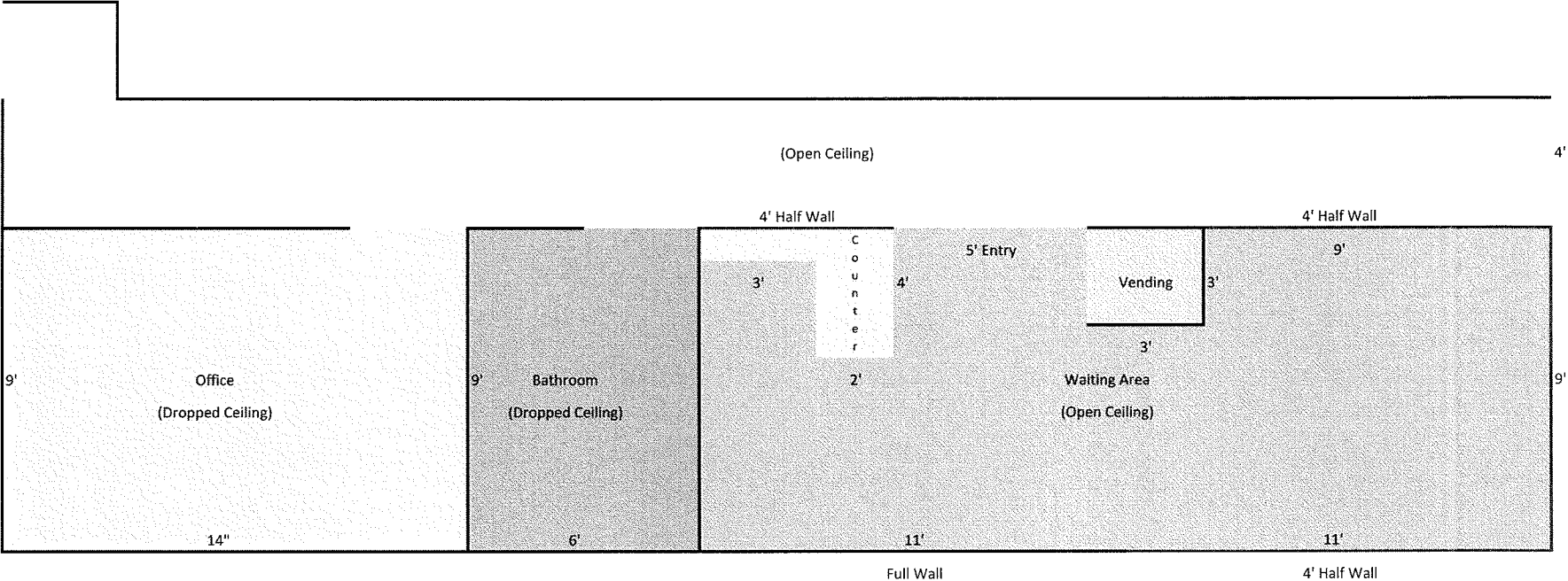
TRANSFORMER

ROOF HATCH, VERIFY LOCATION

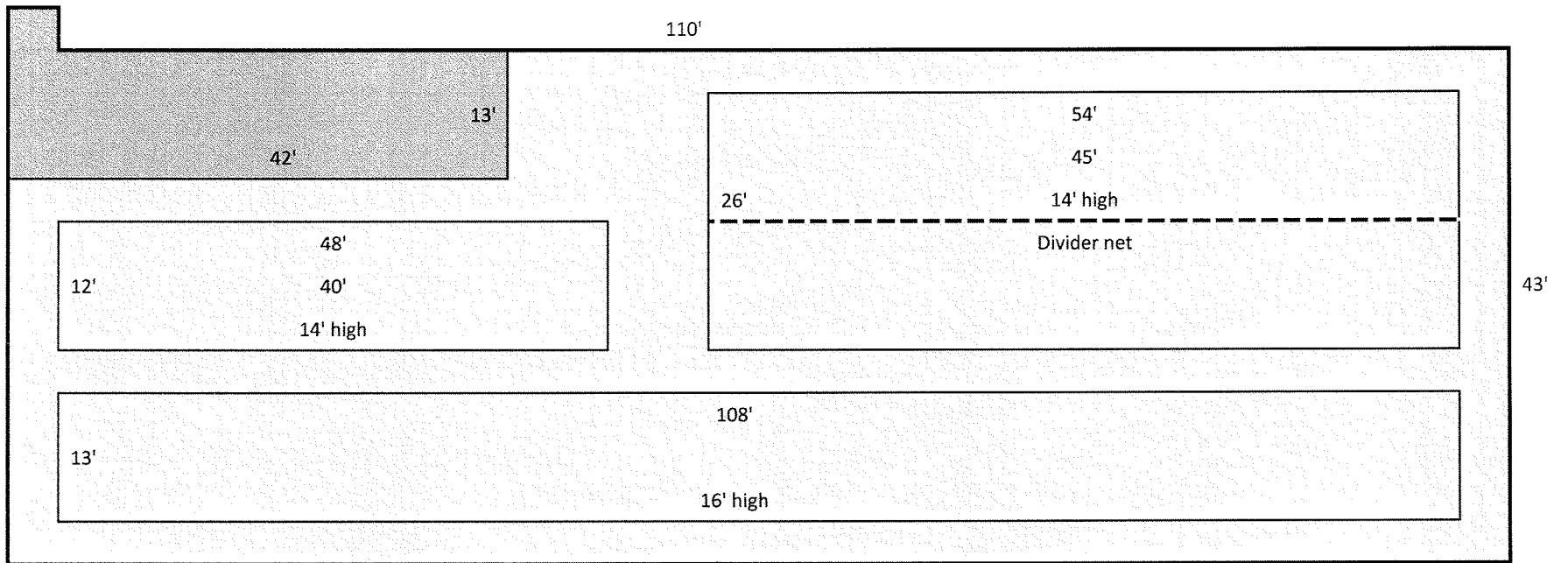
MEASURE TECH

SLOPE

grounded region



Batting Cage Floorplan II



CUP – Operations Summary

We are requesting to operate a baseball / softball training facility in the Ball Road Industrial Park building.

The proposed hours of operation will be as follows:

- September – May
 - Weekdays 4pm – 9pm
 - Weekends 10am – 6pm
 - Other hours by appointment
- June – August
 - Weekdays 2pm – 7pm
 - Weekends 10am – 6pm
 - Other hours by appointment

The facility will consist of approximately 4,500 square feet of training space and 500 square feet of built-out office, storage, bathroom and waiting area space. The training space will have 3 netted areas of approximately 13' x 55' that will be used primarily for hitting instruction and training. There will also be a netted area of approximately 14' x 105' that will be used for fielding, throwing, pitching and hitting instruction and training.

The facility will cater to boys and girls ages 8 – 18 in the Blaine community and surrounding areas. The facility is sized so it can handle one team of 12 players at the older ages and 2 teams at the younger ages. Estimated parking required for the facility at full capacity is not expected to exceed 15 – 20 vehicles.