

Case File No. 17-0055
Robert and Elizabeth Carlson

Blaine Planning Department / 10801 Town Square Dr NE / Blaine, MN 55449 / (763) 785-6180



Lukacs, Natasha

From: ROBERT CARLSON
Sent: Wednesday, November 29, 2017 7:22 PM
To: Lukacs, Natasha
Subject: Re: CUP Application

To Whom it may concern,

We are building the home with the additional garage square footage to compensate for the loss of storage due to not having a basement.

Thank you,
ROBERT and Elizabeth Carlson

Sent from my iPhone

On Nov 28, 2017, at 10:08 AM, Lukacs, Natasha <nlukacs@blainemn.gov> wrote:

Rob & Elizabeth,

The city is in receipt of your CUP application for *11016 Flanders Ct. NE in Blaine*.

Please send me a narrative, a short description of why you would like to build the home with the additional garage square footage, by Friday December 1st in order to consider this item complete for the January Planning Commission Meeting.

Feel free to contact me with any questions,
Thank you

Natasha Lukacs
Planning & Landscape Intern
City of Blaine, MN
763-717-2751

| | | |
|-----------------------------|-------------------|----------------|
| SCALE AS NOTED | DATE 9/29/2011 | SHEET NO. 1 |
| PROJECT TITLE ELEVATIONS | | |

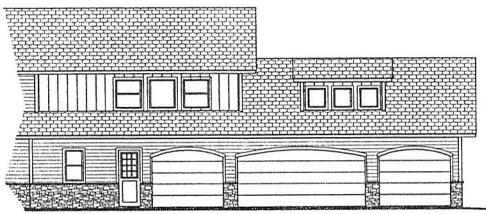
CORRECTIONS MADE ON SITE

NEW HOME FOR
THE
**CARLSON
FAMILY**

DRAWN BY:
TIM J. ROCHEFORD JR.
(763) 607-1568

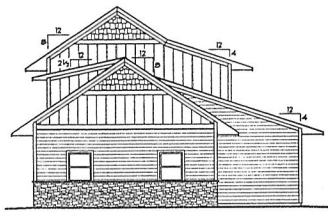
ELEVATION A/1

1/4" = 1'-0"



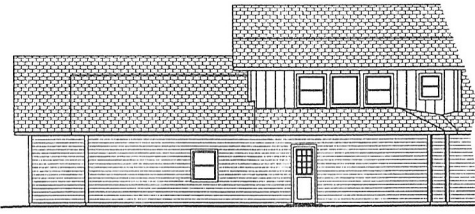
ELEVATION B/1

1/8" = 1'-0"



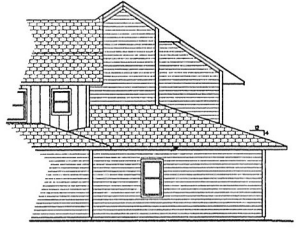
ELEVATION C/1

1/8" = 1'-0"



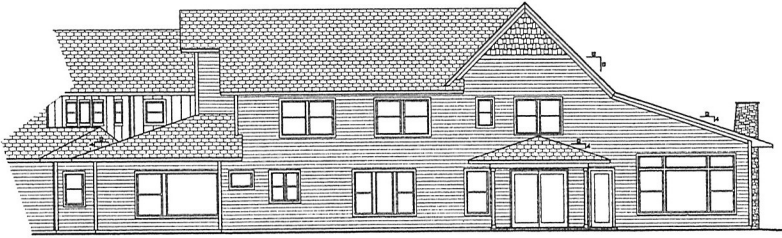
ELEVATION D/1

1/8" = 1'-0"



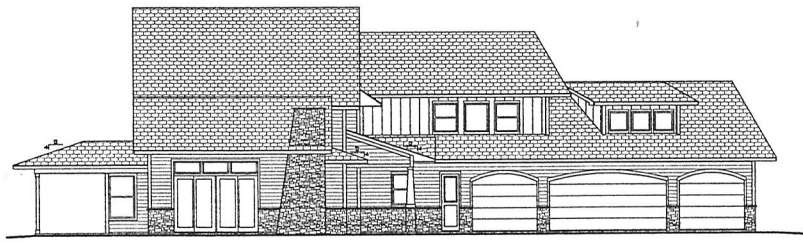
ELEVATION E/1

1/8" = 1'-0"



ELEVATION F/1

1/8" = 1'-0"

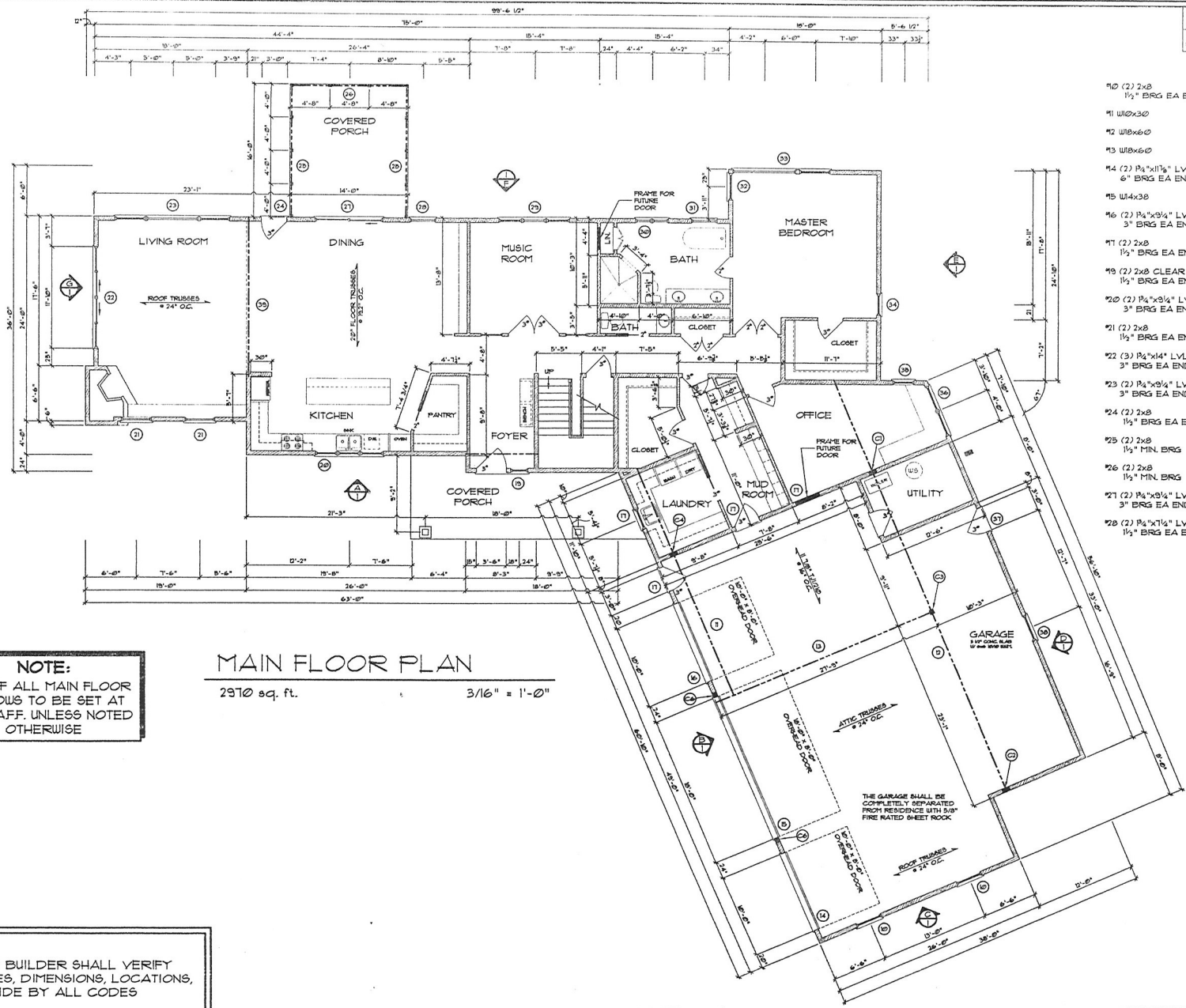


ELEVATION G/1

1/8" = 1'-0"

NOTE
OWNER / BUILDER SHALL VERIFY
ALL SIZES, DIMENSIONS, LOCATIONS,
AND ABIDE BY ALL CODES

CORRECTIONS MADE ON SITE



- #10 (2) 2x8
1 1/2" BRG EA END
- #11 W8x30
- #12 W8x60
- #13 W8x60
- #14 (2) P4"x11 1/8" LVL
6" BRG EA END
- #15 W4x30
- #16 (2) P4"x9 1/4" LVL
3" BRG EA END
- #17 (2) 2x8
1 1/2" BRG EA END
- #18 (2) 2x8 CLEAR
1 1/2" BRG EA END
- #19 (2) P4"x9 1/4" LVL
3" BRG EA END
- #20 (2) 2x8
1 1/2" BRG EA END
- #21 (2) 2x8
1 1/2" BRG EA END
- #22 (2) P4"x14" LVL
3" BRG EA END
- #23 (2) P4"x9 1/4" LVL
3" BRG EA END
- #24 (2) 2x8
1 1/2" BRG EA END
- #25 (2) 2x8
1 1/2" MIN. BRG
- #26 (2) 2x8
1 1/2" MIN. BRG
- #27 (2) P4"x9 1/4" LVL
3" BRG EA END
- #28 (2) P4"x11 1/8" LVL
1 1/2" BRG EA END
- #29 (3) P4"x9 1/4" LVL
3" BRG EA END
- #30 (2) P4"x11 1/8" LVL
3" BRG EA END
- #31 (2) P4"x11 1/8" LVL
1 1/2" BRG EA END
- #32 (2) 2x8
1 1/2" BRG EA END
- #33 (2) P4"x9 1/4" LVL CLEAR
3" BRG EA END
- #34 (2) 2x8
1 1/2" BRG EA END
- #35 (2) 2x8
1 1/2" BRG EA END
- #36 (2) 2x8
1 1/2" BRG EA END
- #37 (2) 2x8
1 1/2" BRG EA END
- #38 (2) 2x8
1 1/2" BRG EA END
- #39 (3) P4"x8" LVL
5 1/2" BRG EA END
- C1 5 1/4"x11 1/4" FSL COLUMN
23,000'
- C2 5 1/4"x11 1/4" FSL COLUMN
22,500'
- C3 STEEL COLUMN
6,400'
- C4 5 1/4"x11 1/4" FSL COLUMN
23,500'
- C5 STEEL COLUMN
40,400'
- C6 5 1/4"x11" FSL COLUMN
13,800'

MAIN FLOOR PLAN

2970 sq. ft. 3/16" = 1'-0"

NOTE:
 TOP OF ALL MAIN FLOOR
 WINDOWS TO BE SET AT
 8'-0" AFF. UNLESS NOTED
 OTHERWISE

NOTE
 OWNER / BUILDER SHALL VERIFY
 ALL SIZES, DIMENSIONS, LOCATIONS,
 AND ABIDE BY ALL CODES