

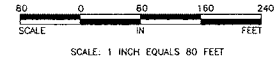
Case File No. 14-0024

Blaine Planning Department / 10801 Town Square Dr NE / Blaine, MN 55449 / (763) 785-6180

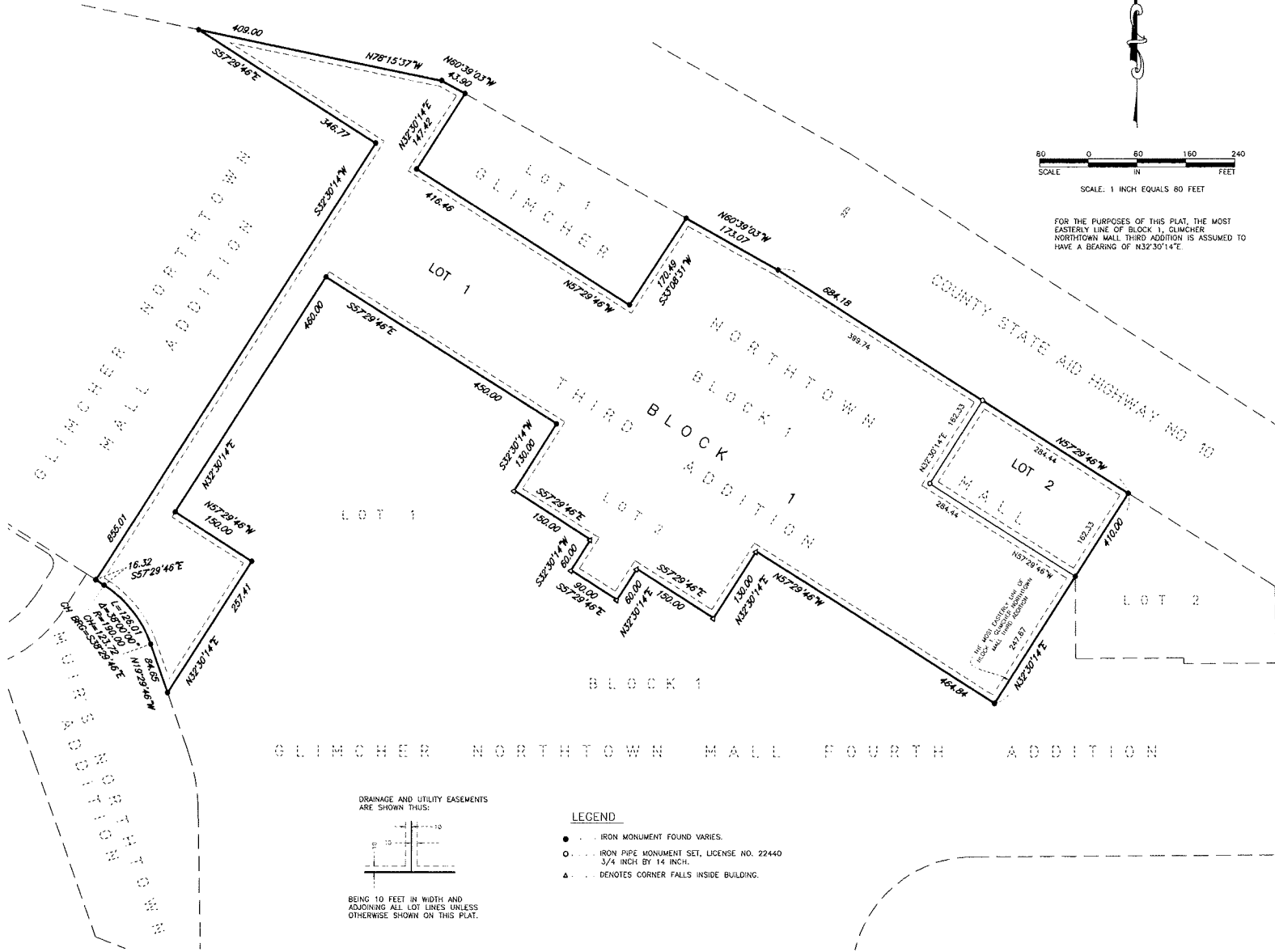


GLIMCHER NORTHTOWN MALL FIFTH ADDITION

CITY OF BLAINE
 COUNTY OF ANOKA
 SEC. 31, TWP. 31, RGE. 23

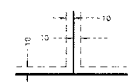


FOR THE PURPOSES OF THIS PLAT, THE MOST
 EASTERLY LINE OF BLOCK 1, GLIMCHER
 NORTHTOWN MALL THIRD ADDITION IS ASSUMED TO
 HAVE A BEARING OF N32°30'14"E.



GLIMCHER NORTHTOWN MALL FOURTH ADDITION

DRAINAGE AND UTILITY EASEMENTS
 ARE SHOWN THIS:



BEING 10 FEET IN WIDTH AND
 ADJOINING ALL LOT LINES UNLESS
 OTHERWISE SHOWN ON THIS PLAT.

LEGEND

- IRON MONUMENT FOUND VARIES.
- IRON PIPE MONUMENT SET, LICENSE NO. 224440
 3/4 INCH BY 1/4 INCH.
- ▲ DENOTES CORNER FALLS INSIDE BUILDING.

111 LINDSAY STREET NW
 99
 99
 111 LINDSAY STREET NW

