

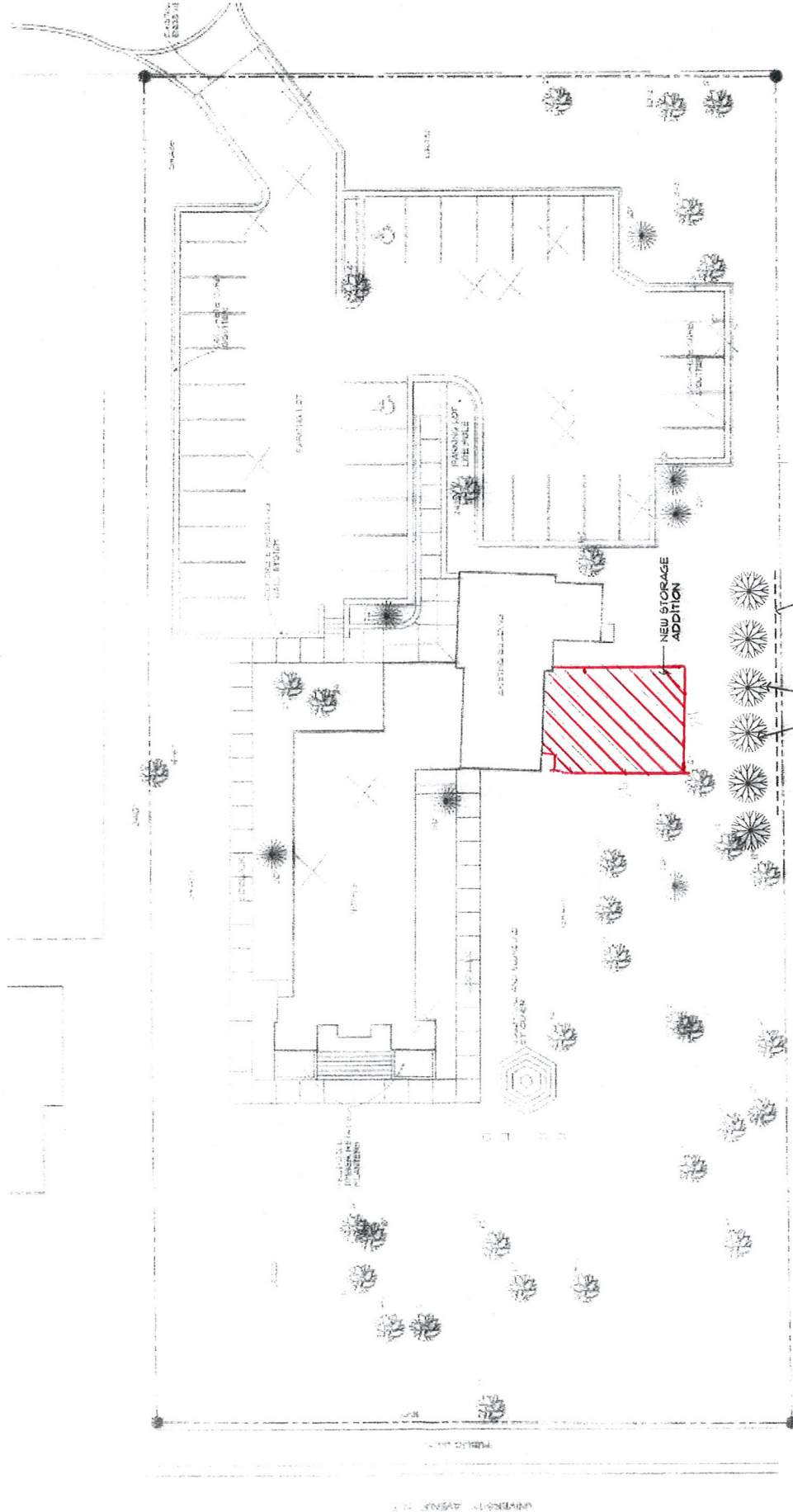
Case File No. 12-0038



RESIDENT REMODELING  
10030 THIRD STREET N.E.  
BLAINE, MN 55434

NEW STORAGE ADDITION      DATE: 09-21-2012

HL DESIGN, LLC  
Hung Ly - Sr. Project Designer  
2924 W. SAINT GERMAIN STREET  
ST. CLOUD, MN 56301  
PHONE: 320-237-7411



PROVIDE 8'-0" HIGH X 60'-0" LONG  
BOARD-ON-BOARD  
FENCE ALONG PROPERTY LINE

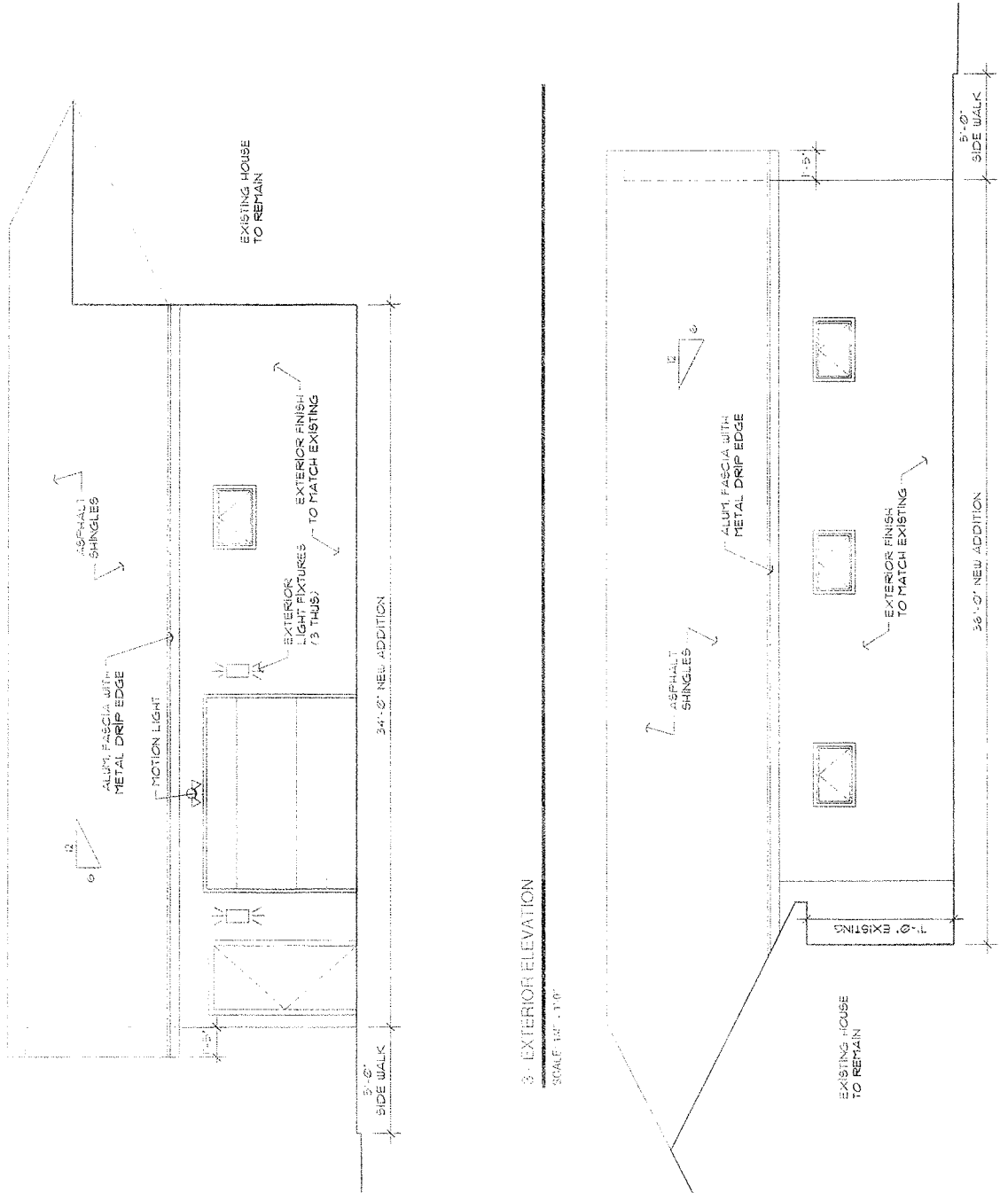
PROVIDE 6 CONIFERS  
TREES ALONG THE PROPERTY  
LINE PER CITY CODE



RESIDENT REMODELING  
 10030 THIRD STREET N.E.  
 BLAINE, MN 55434

NEW STORAGE ADDITION DATE: 09-21-2012

HL DESIGN, LLC  
 Hung Ly - Sr. Project Designer  
 2924 W. Saint GERMAIN STREET  
 ST. CLOUD, MN 56301  
 PHONE: 320-237-7411



3 - EXTERIOR ELEVATION

SCALE: 1/4" = 1'-0"

2 - EXTERIOR ELEVATION

SCALE: 1/4" = 1'-0"

1 - WALL SECTION

SCALE: 1/2" = 1'-0"

