

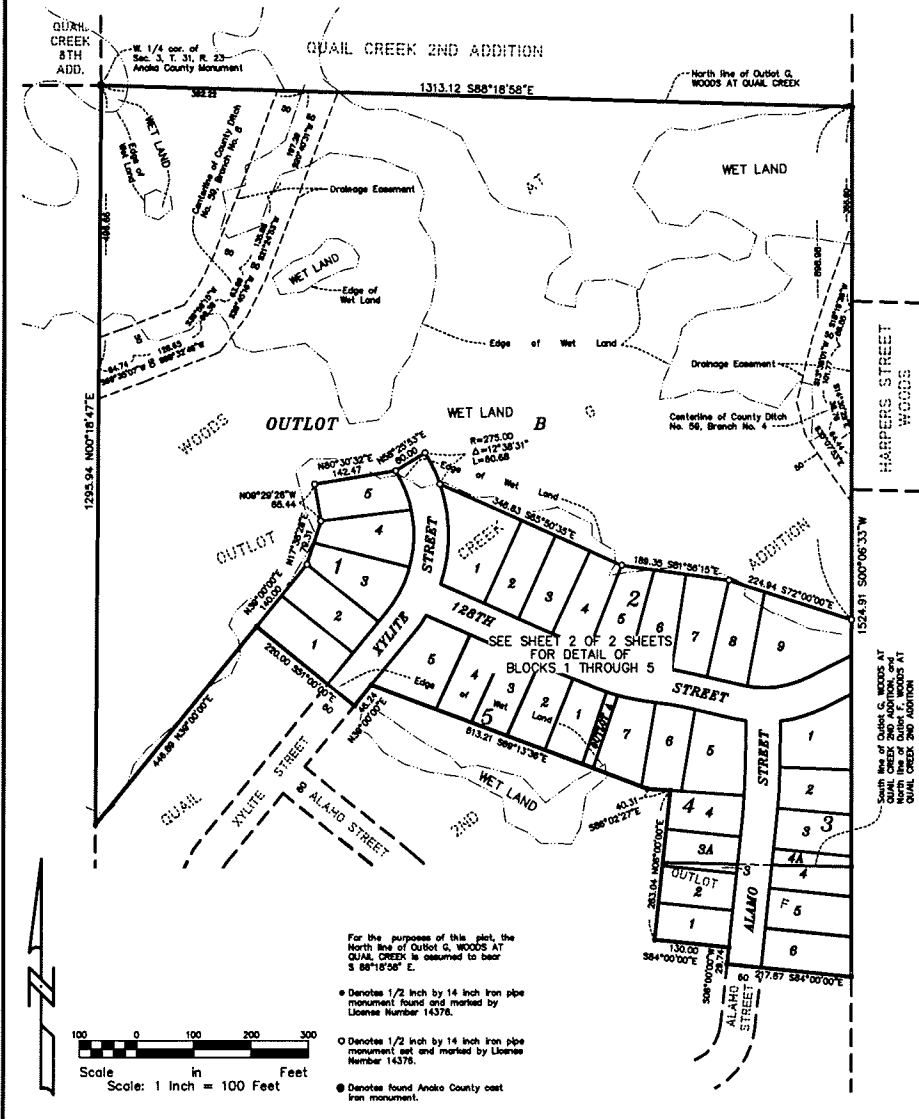
Case File No. 14-0006

Blaine Planning Department / 10801 Town Square Dr NE / Blaine, MN 55449 / (763) 785-6180



WOODS AT QUAIL CREEK 3RD ADDITION

City of Blaine
County of Anoka
Sec. 3, T. 31, R. 23



KNOW ALL PERSONS BY THESE PRESENTS: That U.S. Home Corporation, a Delaware corporation (one of the following described) properly,

Clayton F and G. WOODS AT QUAIL CREEK 3RD ADDITION, according to the record plat thereof,

has caused the same to be surveyed and plotted as WOODS AT QUAIL CREEK 3RD ADDITION and does hereby dedicate to the public for public use the public ways and the drainage and utility easements as created by this plat;

in witness whereof said U.S. Home Corporation, a Delaware corporation, has caused these presents to be signed by its proper officer this _____ day of _____, 20____.

U.S. HOME CORPORATION

By _____

STATE OF MINNESOTA

COUNTY OF _____

This instrument was acknowledged before me this _____ day of _____, 20____, by _____, as _____ of U.S. Home Corporation, a Delaware corporation.

Notary Public, Minnesota
My Commission Expires _____

I, Jeffrey D. Lindgren, do hereby certify that this plat was prepared by me or under my direct supervision, that I am a duly Licensed Land Surveyor in the State of Minnesota, that this plat is a correct representation of the boundary survey that I or my assistants or duly authorized individuals have correctly designated on this plat, that all monuments depicted on this plat have been set, or will be so set within one year, that all water boundaries and easements, as defined in Minnesota Statutes, Section 203.01, Subd. 2, as of the date of this certificate are shown and labeled on this plat, and all public ways are shown and labeled on this plat.

Dated this _____ day of _____, 20____.

Jeffrey D. Lindgren, Licensed Land Surveyor
Minnesota License No. 14378

STATE OF MINNESOTA

COUNTY OF DAKOTA

This instrument was acknowledged before me this _____ day of _____, 20____, by Jeffrey D. Lindgren.

Notary Public, Minnesota
My Commission Expires _____

CITY COUNCIL, CITY OF BLAINE, MINNESOTA

This plat of WOODS AT QUAIL CREEK 3RD ADDITION was approved and accepted by the City Council of the City of Blaine, Minnesota at a regular meeting thereof held this _____ day of _____, 20____, and said plat is in compliance with the provisions of Minnesota Statutes, Section 526.03, Subd. 2.

CITY COUNCIL, CITY OF BLAINE, MINNESOTA

By _____ Mayor By _____ Clerk

ANOKA COUNTY SURVEYOR

I hereby certify that in accordance with Minnesota Statutes, Section 505.021, Subd. 11, this plat has been reviewed and approved this _____ day of _____, 20____.

By _____

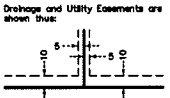
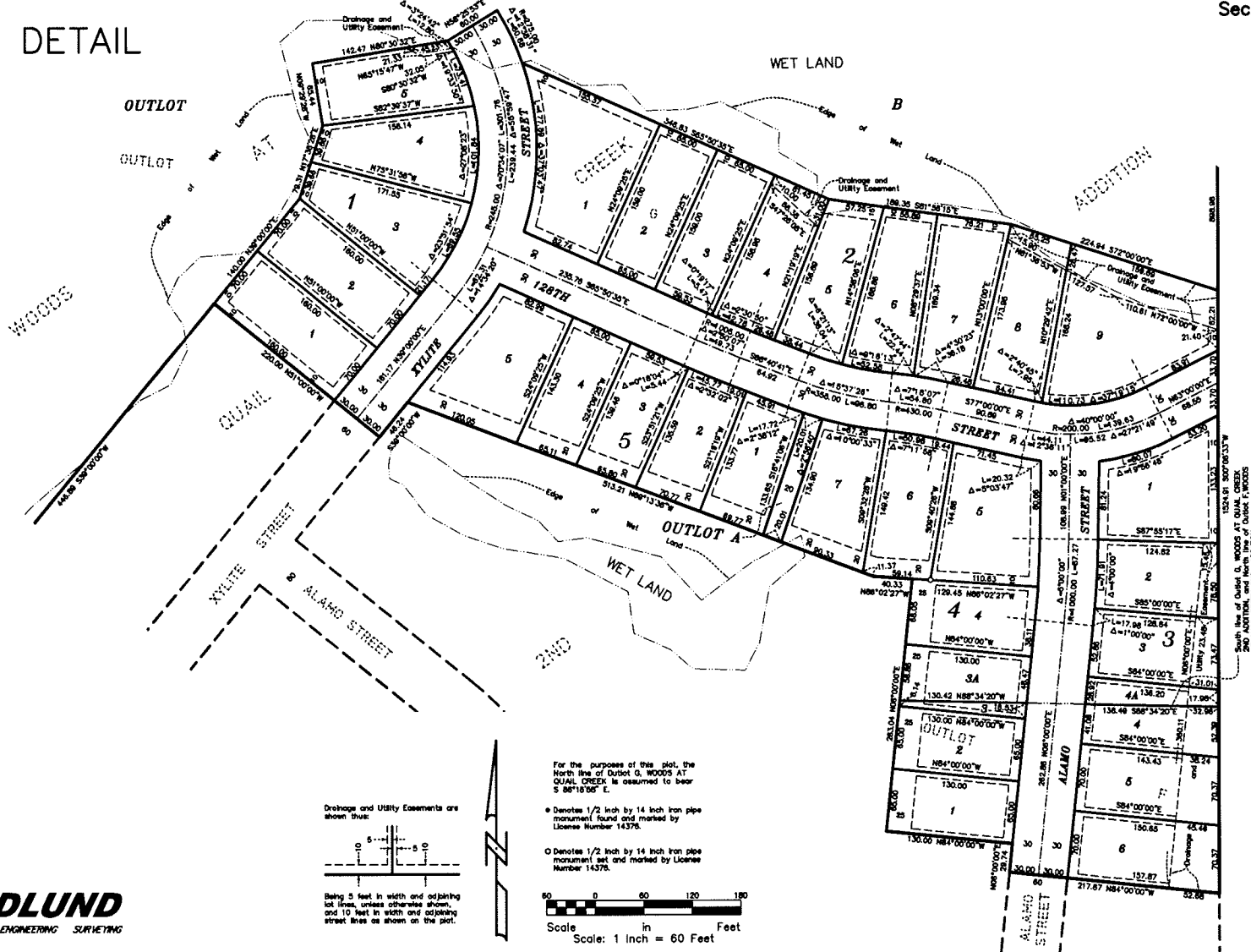
Larry D. Fournier
Anoka County Surveyor

HEDLUND
PLANNING ENGINEERING SURVEYING

WOODS AT QUAIL CREEK 3RD ADDITION

City of Blaine
County of Anoka
Sec. 3, T. 31, R. 23

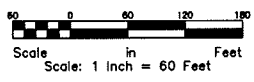
DETAIL



For the purposes of this plat, the North line of Outlot G, WOODS AT QUAIL CREEK is assumed to bear S 86°16'06" E.

• Denotes 1/2 inch by 14 inch iron pipe monument found and marked by License Number 14376.

○ Denotes 1/2 inch by 14 inch iron pipe monument set and marked by License Number 14378.



HEDLUND
PLANNING ENGINEERING SURVEYING