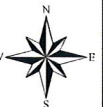
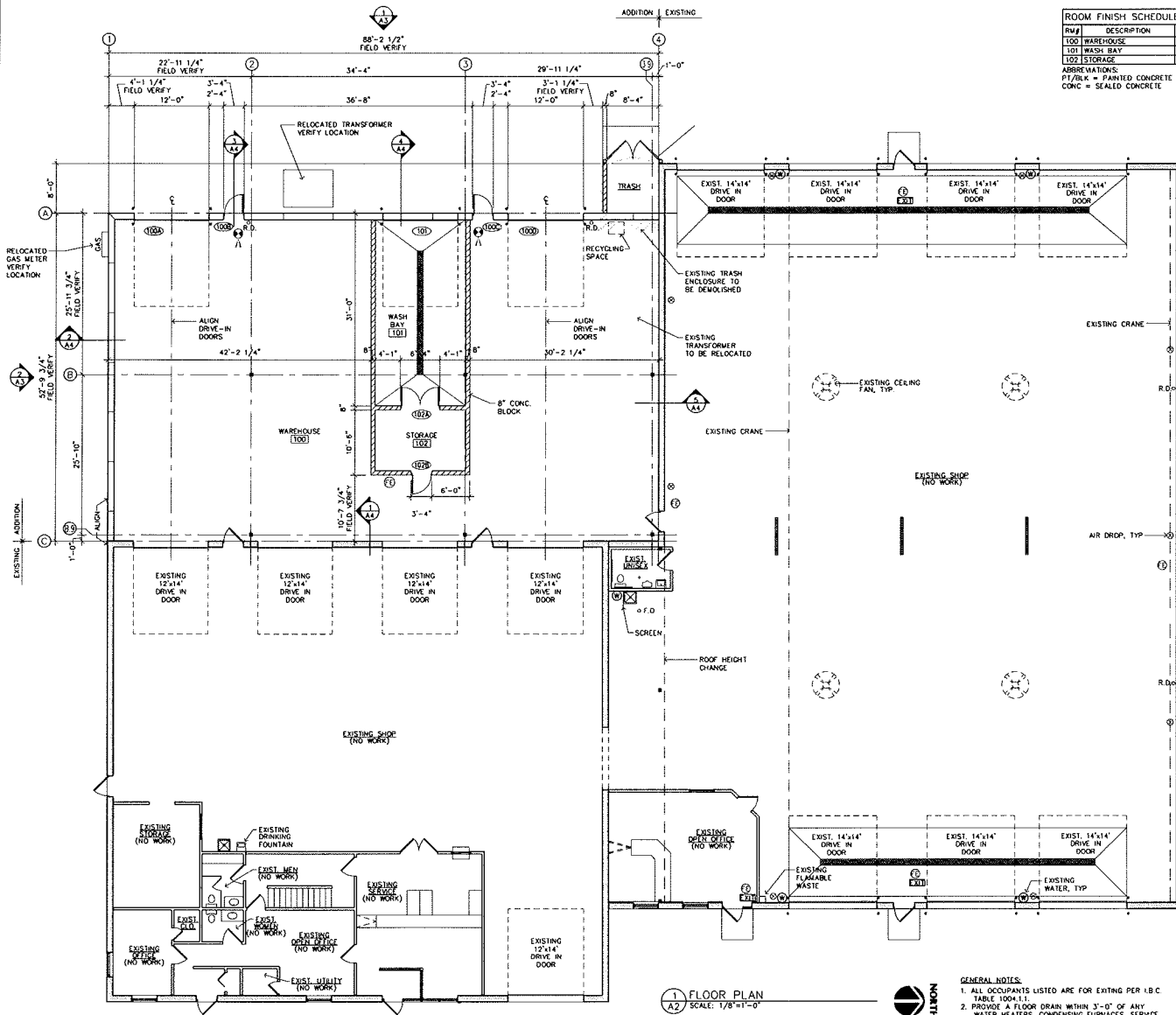


Case File No. 13-0045





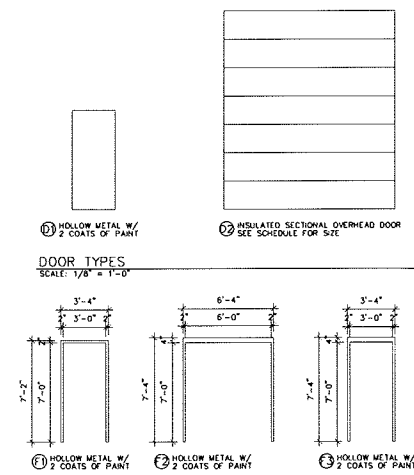


ROOM #	DESCRIPTION	FLOOR	BASE	N.WALL	E.WALL	S.WALL	W.WALL	CLG.	HEIGHT	REMARKS
100	WAREHOUSE	CONC.	PRECAST	PRECAST	PRECAST	PRECAST	PRECAST	-	OPEN	-
101	WASH BAY	CONC.	-	PT/BLK	PT/BLK	PT/BLK	PRECAST	-	OPEN	-
102	STORAGE	CONC.	-	PT/BLK	PT/BLK	PT/BLK	PT/BLK	-	OPEN	-

ABBREVIATIONS:  
 PT/BLK = PAINTED CONCRETE BLOCK  
 CONC = SEALED CONCRETE

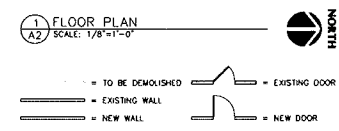
DR #	DOOR SIZE	THICK	DOOR	FRAME	REMARKS
100A	12'-0" x 14'-0"	1 3/4"	D2	-	INSULATED
100B	3'-0" x 7'-0"	1 3/4"	D1	F1	INSULATED
100C	3'-0" x 7'-0"	1 3/4"	D1	F1	INSULATED
100D	12'-0" x 14'-0"	1 3/4"	D2	-	INSULATED
101	12'-0" x 14'-0"	1 3/4"	D2	-	INSULATED
102A	(2) 3'-0" x 7'-0"	1 3/4"	D1	F2	-
102B	3'-0" x 7'-0"	1 3/4"	D1	F3	-

- NOTES:
- ALL DOOR HARDWARE TO BE SPECIFIED & PROVIDED BY CONTRACTOR
  - ALL EXIT HARDWARE SHALL NOT REQUIRE TIGHT GRASPING, PINCHING, OR TWISTING OF THE MOST MOUNT HARDWARE BETWEEN 34" - 48" (ANSI A117.1-2012.4)
  - PROVIDE A KNIX BRAND FIRE DEPARTMENT KEY BOX AS SPECIFIED BY THE FIRE MARSHAL
  - THE MAIN EXIT IS ALLOWED TO HAVE A KEYS LOCK PROVIDED THAT THE LOCKING DEVICE IS READILY DISTINGUISHABLE AS LOCKED AND A SIGN WITH 1" CONTRASTING LETTERS IS POSTED ON THE EGRESS SIDE STATING "THIS DOOR TO REMAIN UNLOCKED WHEN BUILDING IS OCCUPIED." (MSBC 1008.1.8.3, #2)



FRAME TYPES  
SCALE 1/8" = 1'-0"

- GENERAL NOTES:
- ALL OCCUPANTS LISTED ARE FOR EXISTING PER I.B.C. TABLE 1004.1.1.
  - PROVIDE A FLOOR DRAIN WITHIN 3'-0" OF ANY WATER HEATERS, CONDENSING FURNACES, SERVICE SINKS, AND/OR RESTROOM FIXTURES. VERIFY LOCATIONS WITH PLUMBING PLANS.
  - VERIFY LOCATION AND QUANTITY OF ALL ILLUMINATED EXIT SIGNS, EMERGENCY EXIT LIGHTING AND FIRE EXTINGUISHERS WITH FIRE MARSHAL
- (E) = APPROXIMATE FIRE EXTINGUISHER LOCATION  
 (X) = EXIT SIGNAGE - PROVIDE EMERGENCY BACK-UP POWER  
 (L) = EMERGENCY LIGHTING - PROVIDE EMERGENCY BACK-UP POWER



NOTE TO CONTRACTOR:  
VERIFY ALL EXISTING CONDITIONS PRIOR TO CONSTRUCTION



**LAMPERT ARCHITECTS**  
 420 Summit Avenue  
 St. Paul, MN 55102  
 Phone: 763.753.1211 Fax: 763.757.2814  
 lampert@lampert-arch.com

ARCHITECT CERTIFICATION:  
 I HEREBY CERTIFY THAT THIS PLAN, SPECIFICATION OR REPORT WAS PREPARED BY ME OR UNDER MY DIRECT SUPERVISION AND THAT I AM A DULY LICENSED ARCHITECT UNDER THE LAWS OF THE STATE OF MINNESOTA.

DATE: 7/9/13  
 DRAWN BY: L.L.  
 PROJECT: 130107

**Kinghorn**  
 GENERAL CONTRACTOR  
 1118 Highway Blvd.  
 St. Paul, MN 55107  
 Tel: 763-438-8000  
 Fax: 763-438-8000

**Addition For  
 T E C R E P A I R**  
 8950 Eldorado St. NE, Blaine, Minnesota

Copyright 2013  
 Leonard Lampert Architects, P.L.L.C.  
 Project Designer: L. TRACY  
 Drawn By: L.L.  
 Checked By: L.L.

Revisions	DATE	REVISION
1	8/7/13	PRELIMINARY
2	6/13/13	REVISED PRELIM.
3	7/8/13	REVIEW
4	7/9/13	ISSUE

**FLOOR PLAN AND DETAILS**  
 Sheet Number

**A2**  
 Project No. 130107-1



**LAMPERT ARCHITECTS**  
 420 Summit Avenue  
 St. Paul, MN 55102  
 Phone: 763.253.2311 Fax: 763.253.2349  
 lampart@lampart-arch.com

**ARCHITECT CERTIFICATION:**  
 I HEREBY CERTIFY THAT THIS PLAN, SPECIFICATION OR REPORT WAS PREPARED BY ME OR UNDER MY DIRECT SUPERVISION AND THAT I AM A DULY LICENSED ARCHITECT UNDER THE LAWS OF THE STATE OF MINNESOTA.

*Leonard Lampert*  
 LEONARD LAMPERT  
 ARCHITECT  
 LICENSE NO. 13669  
 EXPIRES 7/9/13  
 DATE

**Kinghorn**  
 COMPANY  
 GENERAL CONTRACTORS  
 14188 Northdale Ave  
 Northdale, MN 55124  
 Phone: 763-226-8888  
 Fax: 763-226-8888

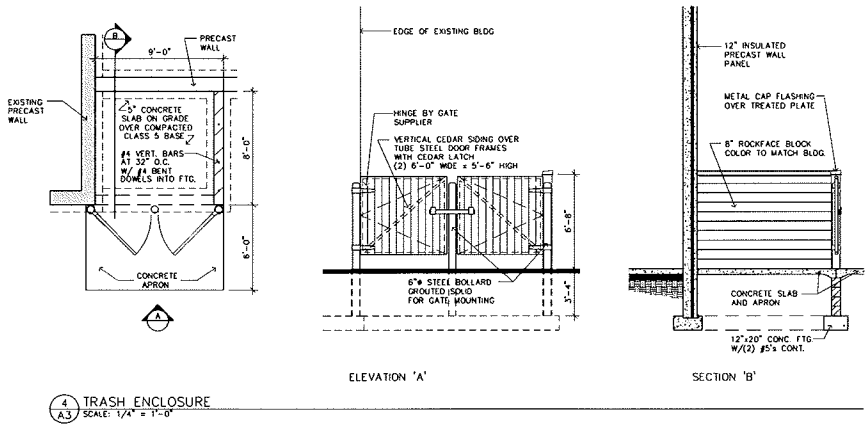
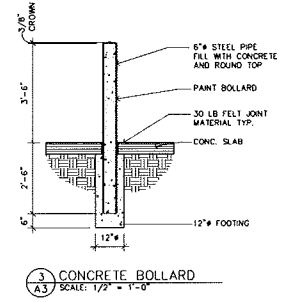
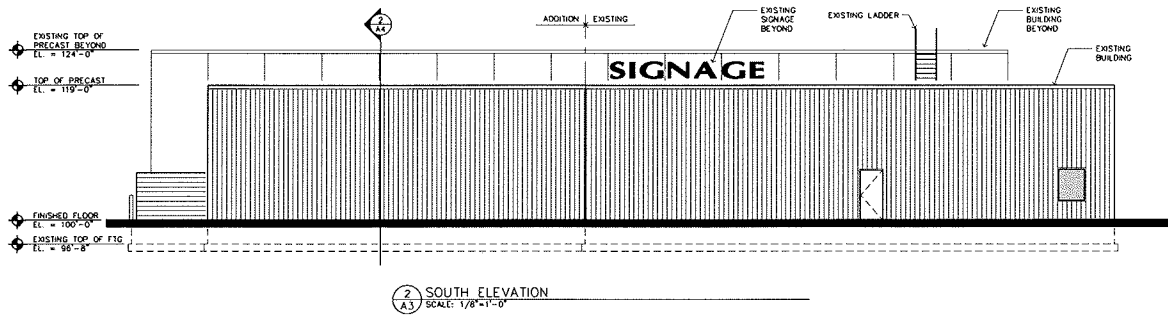
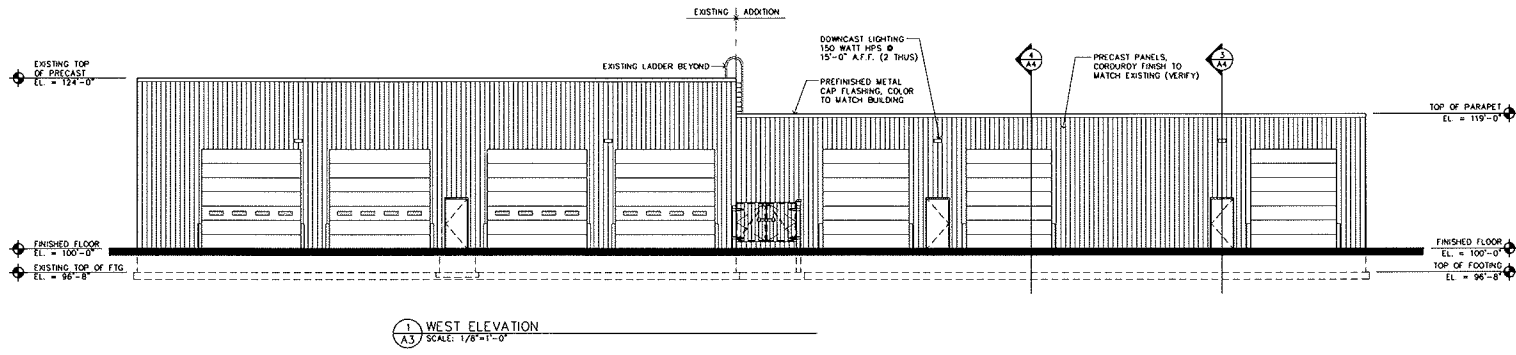
**Addition For  
 T E C R E P A I R**  
 8950 Eldorado St NE, Blaine, Minnesota

Copyright 2013  
 Leonard Lampert Architects, P.A.  
 Project Designer: L. TRACY  
 Drawn By: LLT  
 Checked By: LL

Revisions
6/7/13 PRELIMINARY
6/13/13 REVISED PRELIM
7/8/13 REVIEW
7/9/13 ISSUE

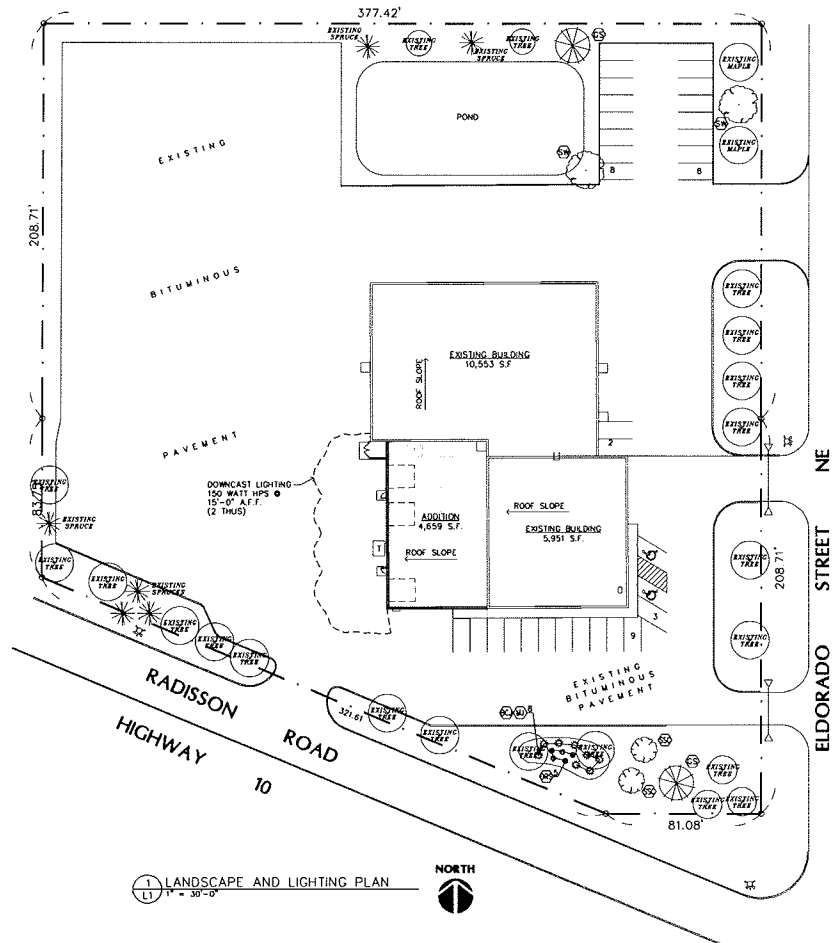
**ELEVATIONS**  
 Sheet Number

**A3**  
 Project No. 130107-1



Filename: Tec Repair Addition \\\Tec Repair Addition - A3.dwg

Filename: Tc\_Report\_Addition\_0\Tc\_Report\_Addition - L1.dwg

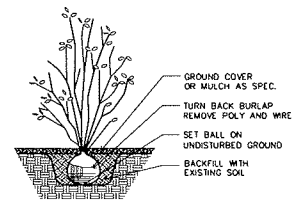


1 LANDSCAPE AND LIGHTING PLAN  
1" = 30'-0"

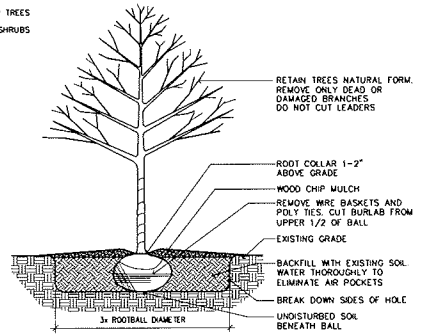
PLANTING SCHEDULE						
QTY.	KEY	COMMON NAME	BOTANICAL NAME	SIZE	MTHD	REMARKS
2	SO	SWAMP OAK	QUERCUS BICOLOR	2.5'	BB	
2	GS	GREEN SPRUCE	PICEA PUNGENS	2.5'	BB	
2	SSC	SPRING SNOW GRAB	MALUS SPRING SNOW	6"	BB	CLUMP
5	DRS	DARTS RED SPIREA	SPIREA XBUMALDA DARTS RED	#5	CONT.	PLANT 4" O.C.
4	BCJ	BLUE CHIP JUNEWEED	JUNIPERUS BLUECHIP	#5	CONT.	PLANT 5" O.C.
4	MJ	MINT JULEP	JULEP CHENSIS 'MINTLEP'	#5	CONT.	PLANT 5" O.C.

- LANDSCAPE NOTES:
1. SOO ALL DISTURBED AREAS.
  2. ROCK MULCH ALL SHRUB PLANTING AREAS. FIBER MAT TO BE INSTALLED AND ROCK MULCH TO ENCOMPASS SHRUBS 3" DEEP. PROVIDE EDGING TO SEPARATE LAWN AND MULCH.
  3. PROVIDE UNDERGROUND IRRIGATION SYSTEM FOR ALL SOODED AREAS AND NEW PLANTINGS.
  4. VERIFY ALL NEW PLANTINGS ARE CLEAR OF SEPTIC AND DRAINFIELD AREAS.
  5. EXISTING VEGETATION TO REMAIN, U.N.C.
  6. REQUIRED LANDSCAPING BASED ON 4,659 S.F. OF ADDITIONAL BUILDING AREA, ADJUSTED TO USE FOR INDUSTRIAL ZONING.

PLANT TYPE	CALCULATION	REQUIRED
DECIDUOUS TREES	4,659 S.F. @ 1/2000 S.F.	2 TREES
CONIFEROUS TREES	4,659 S.F. @ 1/2000 S.F.	2 TREES
ORNAMENTAL TREES	4,659 S.F. @ 1/2000 S.F.	2 TREES
SHRUBS	4,659 S.F. @ 1/300 S.F.	15 SHRUBS



2 SHRUB PLANTING DETAIL  
1" = 30'-0"



3 TREE PLANTING DETAIL  
1" = 30'-0"

NOTE TO CONTRACTOR:  
VERIFY ALL EXISTING CONDITIONS PRIOR TO CONSTRUCTION.

**Kinghorn**  
GENERAL CONTRACTORS  
11196 Holliston, Blvd.  
Plymouth, MN 55124  
TEL: 763-457-9000  
FAX: 763-426-8000

**TEC REPAIR**  
 Addition For  
 8950 Eldorado St NE, Blaine, Minnesota

Drawn By: LLT  
 Checked By: LLT  
 Revisions  
 7/8/13 ISSUE


LANDSCAPE & LIGHTING PLAN AND DETAILS  
 Sheet Number

**L1**

Project No. 130107-1