

Case File No. 17-0030
Blisstopia Yoga

Blaine Planning Department / 10801 Town Square Dr NE / Blaine, MN 55449 / (763) 785-6180





Yoga by Blisstopia Summary for Conditional Use Permit for City of Blaine

Yoga is an ancient discipline that explores, develops, and integrates the body, mind, and spirit. Yoga systematically stretches and strengthens muscles throughout the body, increases circulation to internal organs and glands, quiets the nervous system, and improves concentration. This ancient system of self-care brings vitality, health, deep relaxation, and peace of mind.

Deep relaxation is taught in each class after completion of the postures. The intention of the teachers at Yoga by Blisstopia (YBB) is to assist students in the development of physical, mental, and spiritual well-being: a truly priceless health advantage.

The Yoga by Blisstopia studio is membership based and will offer class passes as well. Courses offered include Hot, Vinyasa Flow, Curvy, Gentle, Beginner's and prenatal workshops in related topics. The Studio features well-trained, professional teachers, progressive teaching methods, a non-competitive and encouraging atmosphere, and a beautiful studio.

The Yoga by Blisstopia Studio also has a small boutique that will sell clothing and yoga training aides.

Lana Anderson-Kuchynski, M.A., founder of Yoga by Blisstopia, is one of Ashtanga Yoga's leading teachers in the Midwest. She conducts workshops and teacher trainings for CEU's. She has been a yoga practitioner since 1995 and a meditator since 1986. Lana is also certified as an Ayurveda practitioner and primordial sound meditation teacher through the renowned Chopra Center with Deepak Chopra in Carlsbad, California. She is registered with the national Yoga Alliance as an experienced yoga teacher. She has also been a CPR instructor with the American Red Cross since 1993.

There will be two studios in the space – one hot and one not. There will be two bathrooms available to members and students as well as the teachers. There will be approximately average of 10-15 students at any given class time throughout the day. Classes will start as early as 6am and go until 8pm Monday through Friday with an average of 4 classes per day. Weekends will typically have 2-3 classes on Saturday and Sunday mornings. There is ample parking in the lot – over 100 spaces.

Blisstopia Yoga

10611 Baltimore St NE
Blaine, MN 55449



110 E. 26th Street
Suite 300
Minneapolis, MN 55404
P:612-879-8225
F:612-879-8152

www.tanek.com

Blisstopia Yoga
10611 Baltimore ST NE
Suite #140
Blaine, MN 55449

ARCHITECTURAL ABBREVIATIONS

AFP	ABOVE FINISHED FLOOR
ACC	ACCESS
AP	ACCESS PANEL
ACT	ACETIC TILE
ACT1	ACETIC TILE
ADJ	ADJACENT
ADJ1	ADJACENT
ALC	AIR CONDITIONING
ALC1	AIR CONDITIONING
ALC2	AIR CONDITIONING
ANCH	ANCHOR BOLT
ANCH1	ANCHOR BOLT
APPROX	APPROXIMATE
ARCH	ARCHITECT (R/AL)
AUT	AUTOMATIC
BA	BATH
BAT	BATH
BEAT	BEARING
BEL	BELT
BEI	BELT
BEL1	BELT
BLDG	BLOCK
BLDG1	BLOCK
BLDG2	BLOCK
BLDG3	BLOCK
BLDG4	BLOCK
BLDG5	BLOCK
BLDG6	BLOCK
BLDG7	BLOCK
BLDG8	BLOCK
BLDG9	BLOCK
BLDG10	BLOCK
BLDG11	BLOCK
BLDG12	BLOCK
BLDG13	BLOCK
BLDG14	BLOCK
BLDG15	BLOCK
BLDG16	BLOCK
BLDG17	BLOCK
BLDG18	BLOCK
BLDG19	BLOCK
BLDG20	BLOCK
BLDG21	BLOCK
BLDG22	BLOCK
BLDG23	BLOCK
BLDG24	BLOCK
BLDG25	BLOCK
BLDG26	BLOCK
BLDG27	BLOCK
BLDG28	BLOCK
BLDG29	BLOCK
BLDG30	BLOCK
BLDG31	BLOCK
BLDG32	BLOCK
BLDG33	BLOCK
BLDG34	BLOCK
BLDG35	BLOCK
BLDG36	BLOCK
BLDG37	BLOCK
BLDG38	BLOCK
BLDG39	BLOCK
BLDG40	BLOCK
BLDG41	BLOCK
BLDG42	BLOCK
BLDG43	BLOCK
BLDG44	BLOCK
BLDG45	BLOCK
BLDG46	BLOCK
BLDG47	BLOCK
BLDG48	BLOCK
BLDG49	BLOCK
BLDG50	BLOCK
BLDG51	BLOCK
BLDG52	BLOCK
BLDG53	BLOCK
BLDG54	BLOCK
BLDG55	BLOCK
BLDG56	BLOCK
BLDG57	BLOCK
BLDG58	BLOCK
BLDG59	BLOCK
BLDG60	BLOCK
BLDG61	BLOCK
BLDG62	BLOCK
BLDG63	BLOCK
BLDG64	BLOCK
BLDG65	BLOCK
BLDG66	BLOCK
BLDG67	BLOCK
BLDG68	BLOCK
BLDG69	BLOCK
BLDG70	BLOCK
BLDG71	BLOCK
BLDG72	BLOCK
BLDG73	BLOCK
BLDG74	BLOCK
BLDG75	BLOCK
BLDG76	BLOCK
BLDG77	BLOCK
BLDG78	BLOCK
BLDG79	BLOCK
BLDG80	BLOCK
BLDG81	BLOCK
BLDG82	BLOCK
BLDG83	BLOCK
BLDG84	BLOCK
BLDG85	BLOCK
BLDG86	BLOCK
BLDG87	BLOCK
BLDG88	BLOCK
BLDG89	BLOCK
BLDG90	BLOCK
BLDG91	BLOCK
BLDG92	BLOCK
BLDG93	BLOCK
BLDG94	BLOCK
BLDG95	BLOCK
BLDG96	BLOCK
BLDG97	BLOCK
BLDG98	BLOCK
BLDG99	BLOCK
BLDG100	BLOCK

PROJECT DATA AND CODE ANALYSIS

CODE REVIEW
SITE STATUS
SITE AREA TO REMAIN THE SAME
CODE ANALYSIS
PROPOSED SPACE: NEW TENANT - BLISSSTOPA YOGA
CODES
305 MN STATE BUILDING CODE
2021 IBC
BUILDING INFORMATION
CONSTRUCTION TYPE
SPRINKLERS
PRIMARY OCCUPANCY
OCCUPANT LOAD CALCULATIONS
OCCUPANCY TYPE
DOOR (2) A ROOM OR SPACE USED FOR ASSEMBLY PURPOSES WITH AN OCCUPANT LOAD OF LESS THAN 50 PERSONS AND ACCESSORY TO ANOTHER OCCUPANCY SHALL BE CLASSIFIED AS A GROUP B OCCUPANCY OR A PART OF THAT OCCUPANCY
OCCUPANT LOAD
1000 TOTAL SQUARE FEET
EMERGENCY (YOGA ROOMS) 1000 SQ FT / 50 = 20 OCCUPANTS
OFFICE 1000 SQ FT / 100 = 10 OCCUPANTS
STORAGE 75 SQ FT / 30 = 2 OCCUPANTS
TOTAL 20 OCCUPANTS
NOTE: RESTROOMS WERE NOT INCLUDED IN THE SQUARE FOOTAGE CALCULATION
IBC TABLE 904.3 COMMON PATH OF EGRESS TRAVEL
OCCUPANCY GROUP B SPRINKLERED: 300 FEET
IBC TABLE 904.2 EXIT ACCESS TRAVEL DISTANCE
OCCUPANCY GROUP B SPRINKLERED: 300 FEET
1 EXITS REQUIRED, 1 EXITS PROVIDED
PURSUING COUNTS
MENS 1 UC REQUIRED, 1 PROVIDED
WOMENS 1 UC REQUIRED, 1 PROVIDED
1 DRINKING FOUNTAINS REQUIRED, 2 PROVIDED
1 JANITOR SINK REQUIRED, 1 PROVIDED

DIRECTORY

ARCHITECT TANEK INC
30 E. 34th Street
Suite 300
Minneapolis, MN 55404
612.879.8225
www.tanek.com
Contact: Natalie Shea

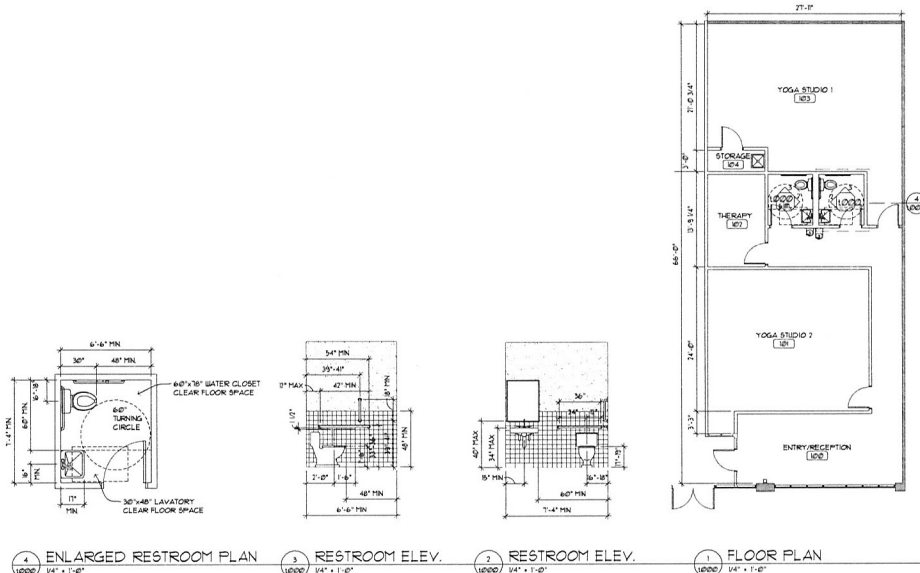
CONTRACTOR TONY COMMERCIAL CONTRACTING
488 Commercial Drive
Suite 775
Woodbury, MN 55095
www.tonycommercialcontracting.com
Contact: David Strosick

SHEET SUMMARY

NO.	DESCRIPTION	DATE
1	ISSUE FOR PERMIT	06/29/17

GENERAL CONSTRUCTION NOTES

- THE GENERAL CONTRACTOR SHALL VERIFY ALL CONDITIONS AND DIMENSIONS PRIOR TO BEGINNING WORK.
- ALL WORK SHALL CONFORM WITH STATE AND LOCAL CODES.
- SUBSTITUTIONS SHALL NOT BE ALLOWED WITHOUT THE APPROVAL OF THE OWNER OR THEIR REPRESENTATIVES.
- EACH CONTRACTOR SHALL EXAMINE WORK PERFORMED BY OTHERS TO WHICH HIS WORK ADDONS OR IS APPLIED PRIOR TO STARTING ANY OPERATION AND SHALL REPORT ANY CONDITIONS THAT WILL PREVENT SATISFACTORY COMPLETION OF HIS CONTRACT TO THE GENERAL CONTRACTOR.
- THE CONTRACTOR SHALL OBTAIN FROM OR DELIVER TO THE PROPER AGENCIES ALL PERMITS AND NOTICES REQUIRED BY LAW.
- EACH INDIVIDUAL CONTRACTOR SHALL BE RESPONSIBLE FOR CLEAN UP AFTER THEIR WORK IS COMPLETED.
- EXISTING STRUCTURE INCLUDING BUT NOT LIMITED TO: COLLUMS, 20TH METAL DETAILING, METAL BRACING, BEARING PLATES AND EXTERIOR BEARING WALLS SHALL REMAIN INTACT. CARE SHALL BE EXERCISED TO PREVENT DAMAGE DURING DEMOLITION AND CONSTRUCTION.
- THE GENERAL CONTRACTOR SHALL INSTALL ANY EMERGENCY AND/OR EXISTING LIGHTING EQUIPMENT AS DIRECTED BY THE FIRE DEPARTMENT FOR THIS PHASE OF DEMOLITION AND CONSTRUCTION.
- THE DESIGN AND INSTALLATION OF HVAC SYSTEMS AS WELL AS RELATED FEATURES, DUCTS AND CONTROLS SHALL BE BY THE MECHANICAL CONTRACTOR. THE HVAC CONTRACTOR SHALL CALCULATE ENERGY USE AS REQUIRED BY STATE OR LOCAL JUA.
- THE DESIGN AND INSTALLATION OF ELECTRICAL AND LIGHTING SERVICES AS WELL AS RELATED SERVICES AND CONTROLS SHALL BE BY THE ELECTRICAL CONTRACTOR. THE ELECTRICAL CONTRACTOR SHALL SUPPLY ALL REQUIRED CALCULATIONS CONCERNING LIGHTING AND ELECTRICAL USE.



Issue for permit 06.29.17
Floor plan and restroom elevs. level one

scale as noted
name sw

Issue for permit 06.29.17
Floor plan and restroom elevs. level one

t000
Issue for permit 06.29.17