

**Case File No. 13-0029**



# WATERS EDGE AT CLUB WEST

CITY OF BLAINE  
COUNTY OF ANOKA  
SEC. 17, TWP. 31, RNG. 23

KNOW ALL PERSONS BY THESE PRESENTS: That DK Resource Group CW L.L.C., a Minnesota limited liability company, owner of the following described property:

Lot 1, Block 1 and Outlot A, all in CLUB WEST FIFTEENTH ADDITION, Anoka County, Minnesota.

Has caused the same to be surveyed and plotted as WATERS EDGE AT CLUB WEST and does hereby dedicate to the public for public use the drainage and utility easements as shown on this plot.

In witness whereof said DK Resource Group CW L.L.C., a Minnesota limited liability company, has caused these presents to be signed by its proper officer this \_\_\_\_ day of \_\_\_\_\_, 20\_\_\_\_  
DK RESOURCE GROUP CW L.L.C.

STATE OF MINNESOTA  
COUNTY OF \_\_\_\_\_

This instrument was acknowledged before me this \_\_\_\_ day of \_\_\_\_\_, 20\_\_\_\_ by \_\_\_\_\_ as \_\_\_\_\_ of DK Resource Group CW L.L.C., a Minnesota limited liability company, on behalf of the company.

Notary Public, \_\_\_\_\_ County, Minnesota  
My Commission Expires \_\_\_\_\_

I, Eric R. Vickaryous, do hereby certify that this plot was prepared by me or under my direct supervision; that I am a duly Licensed Land Surveyor in the State of Minnesota; that this plot is a correct representation of the boundary survey; that all mathematical data and labels are correctly designated on this plot; that all monuments depicted on this plot have been, or will be correctly set within one year; that all water boundaries and wet lands, as defined in Minnesota Statutes, Section 505.01, Subd. 3, as of the date of this certificate are shown and labeled on this plot, and all public ways are shown and labeled on this plot.

Dated this \_\_\_\_ day of \_\_\_\_\_, 20\_\_\_\_

Eric R. Vickaryous, Licensed Land Surveyor  
Minnesota License Number 44125

STATE OF MINNESOTA  
COUNTY OF \_\_\_\_\_

This instrument was acknowledged before me this \_\_\_\_ day of \_\_\_\_\_, 20\_\_\_\_ by Eric R. Vickaryous.

Notary Public, \_\_\_\_\_ County, Minnesota  
My Commission Expires \_\_\_\_\_

CITY COUNCIL, CITY OF BLAINE, MINNESOTA

This plot of WATERS EDGE AT CLUB WEST was approved and accepted by the City Council of the City of Blaine, Minnesota at a regular meeting thereof held this \_\_\_\_ day of \_\_\_\_\_, 20\_\_\_\_ and said plot is in compliance with the provisions of Minnesota Statutes, Section, 505.03, Subd. 2

CITY COUNCIL, CITY OF BLAINE, MINNESOTA

By: \_\_\_\_\_ Mayor

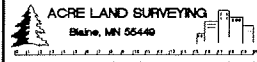
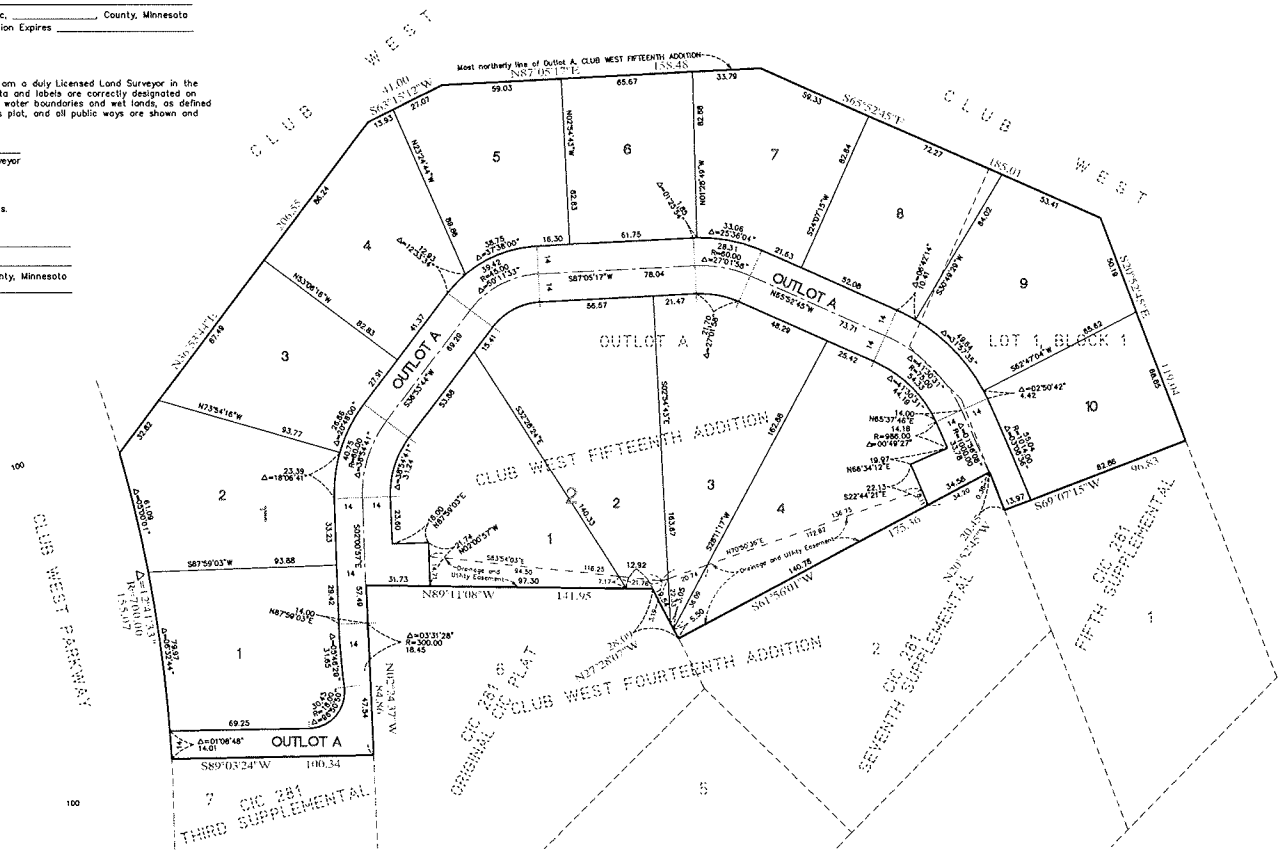
By: \_\_\_\_\_ Clerk

COUNTY SURVEYOR

I hereby certify that in accordance with Minnesota Statutes, Section 505.021, Subd. 11, this plot has been reviewed and approved this \_\_\_\_ day of \_\_\_\_\_, 20\_\_\_\_

By: \_\_\_\_\_  
Larry D. Holm  
Anoka County Surveyor

FOR THE PURPOSES OF THIS PLAT, THE MOST NORTHERLY LINE OF OUTLOT A, CLUB WEST FIFTEENTH ADDITION, ANOKA COUNTY, MINNESOTA, IS ASSUMED TO BEAR N89°05'17\"



● DENOTES FOUND MONUMENT.  
○ DENOTES 1/2" HIGH IRON PIPE MARKED BY LICENSE NO. 44125.  
ALL MONUMENT REQUIRED BY MINNESOTA STATUTE WILL BE SET WITHIN ONE YEAR OF THE RECORDING DATE OF THIS PLAT, AND SHALL BE EVIDENCED BY A 1/2" HIGH BY 1 1/4" IRON PIPE MARKED BY RLS 44125.