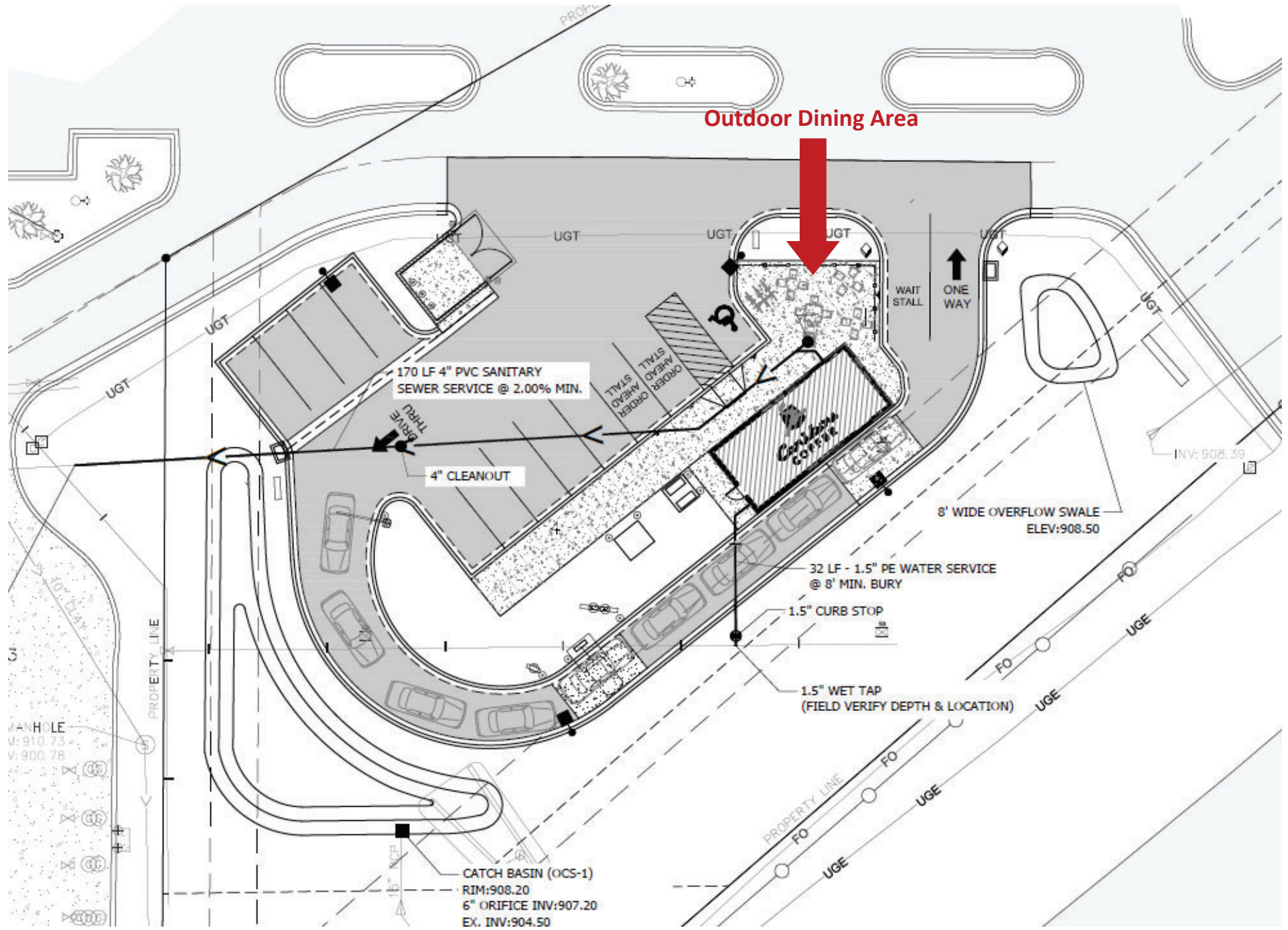


**Case File No. 21-0079
Caribou Coffee**



Outdoor Dining Area



170 LF 4" PVC SANITARY SEWER SERVICE @ 2.00% MIN.

4" CLEANOUT

32 LF - 1.5" PE WATER SERVICE @ 8' MIN. BURY

1.5" CURB STOP

1.5" WET TAP (FIELD VERIFY DEPTH & LOCATION)

8" WIDE OVERFLOW SWALE ELEV: 908.50

CATCH BASIN (OCS-1)
RIM: 908.20
6" ORIFICE INV: 907.20
EX. INV: 904.50

MANHOLE
W: 910.73
V: 900.78

INV: 908.39

- ▲ T.O. ROOF
111'-8"
- ▲ B.O. TRUSS
103'-8 1/2"
- ▲ T.O. WINDOW R.O.
101'-10 1/2"
- ▲ B.O. LIGHT FIXTURE
106'-8"
- ▲ T.O. SILL CAP
102'-10 1/2"
- ▲ F.F.E.
100'-0"



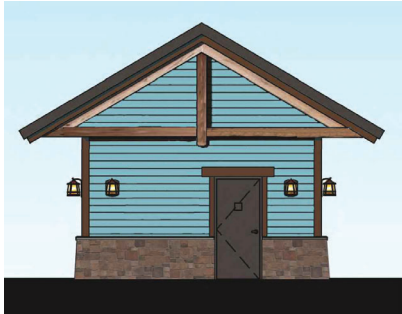
1 NORTH ELEVATION
1/4" = 1'-0"

- ▲ T.O. ROOF
111'-8"
- ▲ B.O. TRUSS
103'-8 1/2"
- ▲ T.O. WINDOW R.O.
101'-10 1/2"
- ▲ B.O. LIGHT FIXTURE
106'-8"
- ▲ T.O. SILL CAP
102'-10 1/2"
- ▲ F.F.E.
100'-0"



2 EAST ELEVATION
1/4" = 1'-0"

- ▲ T.O. ROOF
111'-8"
- ▲ B.O. TRUSS
103'-8 1/2"
- ▲ B.O. LIGHT FIXTURE
106'-8"
- ▲ T.O. SILL CAP
102'-10 1/2"
- ▲ F.F.E.
100'-0"



3 WEST ELEVATION
1/4" = 1'-0"

- ▲ T.O. ROOF
111'-8"
- ▲ B.O. TRUSS
103'-8 1/2"
- ▲ T.O. WINDOW R.O.
101'-10 1/2"
- ▲ B.O. LIGHT FIXTURE
106'-8"
- ▲ T.O. SILL CAP
102'-10 1/2"
- ▲ F.F.E.
100'-0"



4 SOUTH ELEVATION
1/4" = 1'-0"

BUILDING MATERIALS LEGEND

- STONE - CULTURED MANUFACTURED STONE, ENVIRONMENTAL STONEWORKS STYLE, TUSCAN LEDGESTONE, COLOR: LANTANA. SILL CAP, ENVIRONMENTAL STONEWORKS DRIP LEDGE. COLOR: KODIAK.
- HARDIE PLANK SIDING - PAINTED 'CLOUDBURST'
- HARDIE TRIM BOARD AT HORIZONTAL TRANSITION TO SIDING AND SURROUNDING WINDOWS AND DOORS - PAINTED 'BITTERBUCKET CHOCOLATE'
- STANDING SEAM METAL ROOFING - COLOR: DARK BRONZE.
- DARK BRONZE STOREFRONT DOORS, WINDOWS, AND HI SERVICE DOORS.
- NEW LIGHT FIXTURES - PROGRESS 15164-86 BURNISHED CHESTNUT WALL LAMP

PRELIMINARY
NOT FOR CONSTRUCTION

PRELIMINARY
NOT FOR CONSTRUCTION

CARIBOU COFFEE COMPANY
DRIVE-THRU ONLY STORE
10100 STATE ST. BLAINE, MN 55014
LAKE DRIVE AND MAPLES, BLAINE, MN 55014

EXTERIOR ELEVATIONS



Caribou COFFEE
Caribou Coffee Company
3900 Lakebreeze Ave N
Brooklyn Center, MN 55429

DATE ISSUED
SITE PLAN APPROVAL 10-08-2021
CITY COMMENTS 11-01-2021

DRAWN BY: CE
CHECKED BY: CS
JOB NO.: 21188
PROJECT LOCATION:

BLAINE, MN

