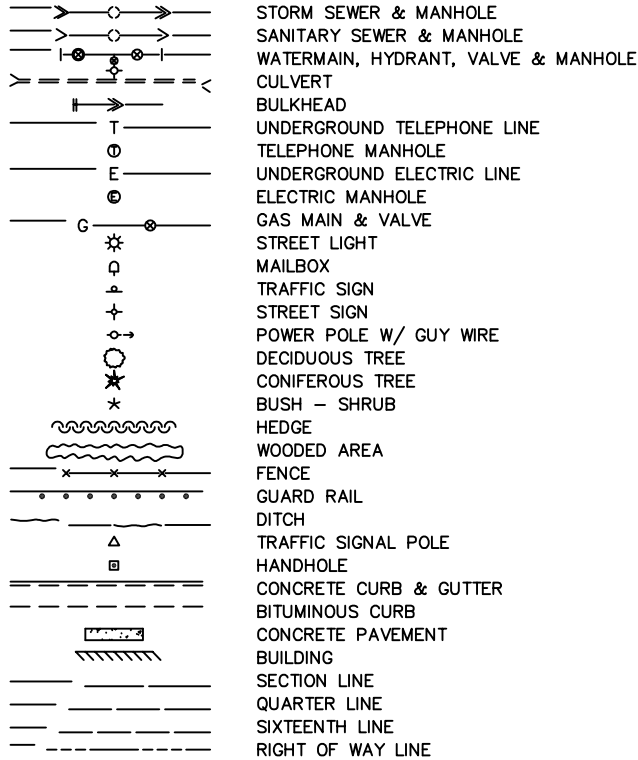


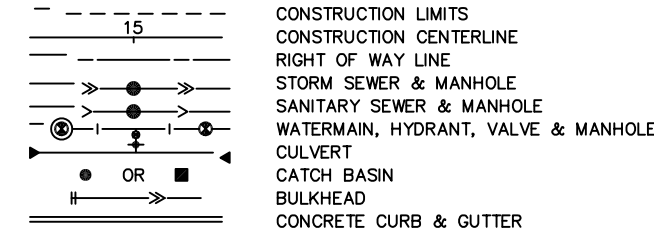
CONSTRUCTION PLANS FOR: 2020 PARK TRAIL IMPROVEMENTS
IMPROVEMENT PROJECT 20-40:
ARNOLD PALMER DRIVE TRAIL CONNECTION,
POLK STREET SIDEWALK REALIGNMENT, AND MISCELLANEOUS DRIVEWAY REPAIRS
PROJECT LOCATION MAP

LEGEND

EXISTING

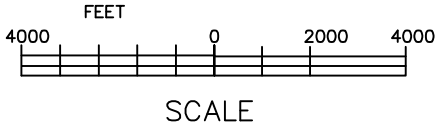
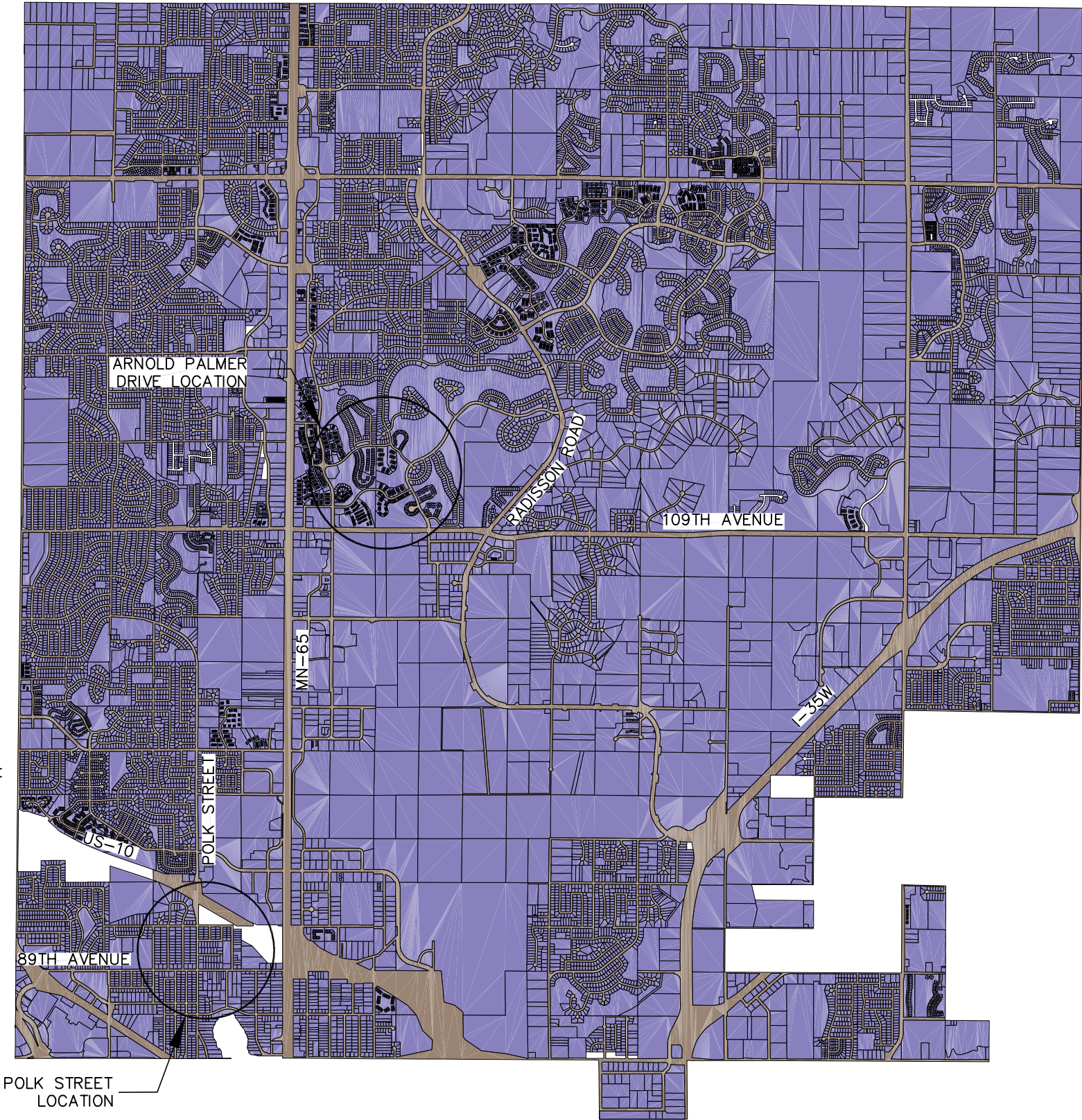


PROPOSED



NOTES:

1. THE EXACT LOCATION OF UNDERGROUND UTILITIES SUCH AS GAS, TELEPHONE, FIBEROPTIC, ELECTRIC, CABLE TV AND PIPELINES ARE UNKNOWN. THE CONTRACTOR SHALL CONTACT GOPHER STATE ONE CALL BEFORE COMMENCING AND CONSTRUCTION OR EXCAVATION. GOPHER STATE ONE CALL SYSTEM.....1-800-252-1666
2. THE SUBSURFACE UTILITY INFORMATION IN THIS PLAN IS UTILITY QUALITY LEVEL D. THIS QUALITY LEVEL WAS DETERMINED ACCORDING TO THE GUIDELINES OF C/ASCE 38-02, ENTITLED "STANDARD GUIDELINES FOR THE COLLECTION AND DEPICTION OF EXISTING SUBSURFACE UTILITY DATA."
3. ALL TRAFFIC CONTROL DEVICES AND SIGNING SHALL CONFORM TO THE MUTCD, INCLUDING "FIELD MANUAL FOR TEMPORARY TRAFFIC CONTROL ZONE LAYOUTS" - CURRENT EDITION.
4. THE 2018 EDITION OF THE MINNESOTA DEPARTMENT OF TRANSPORTATION STANDARD SPECIFICATIONS FOR CONSTRUCTION AND THE 2018 EDITION OF THE MATERIALS LAB SUPPLEMENTAL FOR CONSTRUCTION SHALL GOVERN EXCEPT AS MODIFIED BY THE SPECIFICATIONS FOR THIS PROJECT.



ENGINEERING DEPARTMENT
10801 Town Square Dr NE Blaine, Minnesota 55449
Phone (763) 785-6172

I hereby certify that this plan, specification or report was prepared by me or under my direct supervision and that I am a duly Licensed Professional Engineer under the laws of the State of Minnesota.

Cody P. Sylvester, PE

Date: 09/07/21 Minnesota Lic. No. 59459

INDEX TO PLANS

SHEET NO.	DESCRIPTION
1	TITLE SHEET
2	STATEMENT OF ESTIMATED QUANTITIES
3-4	TRAIL AND SIDEWALK CONSTRUCTION
5-11	DETAILS