

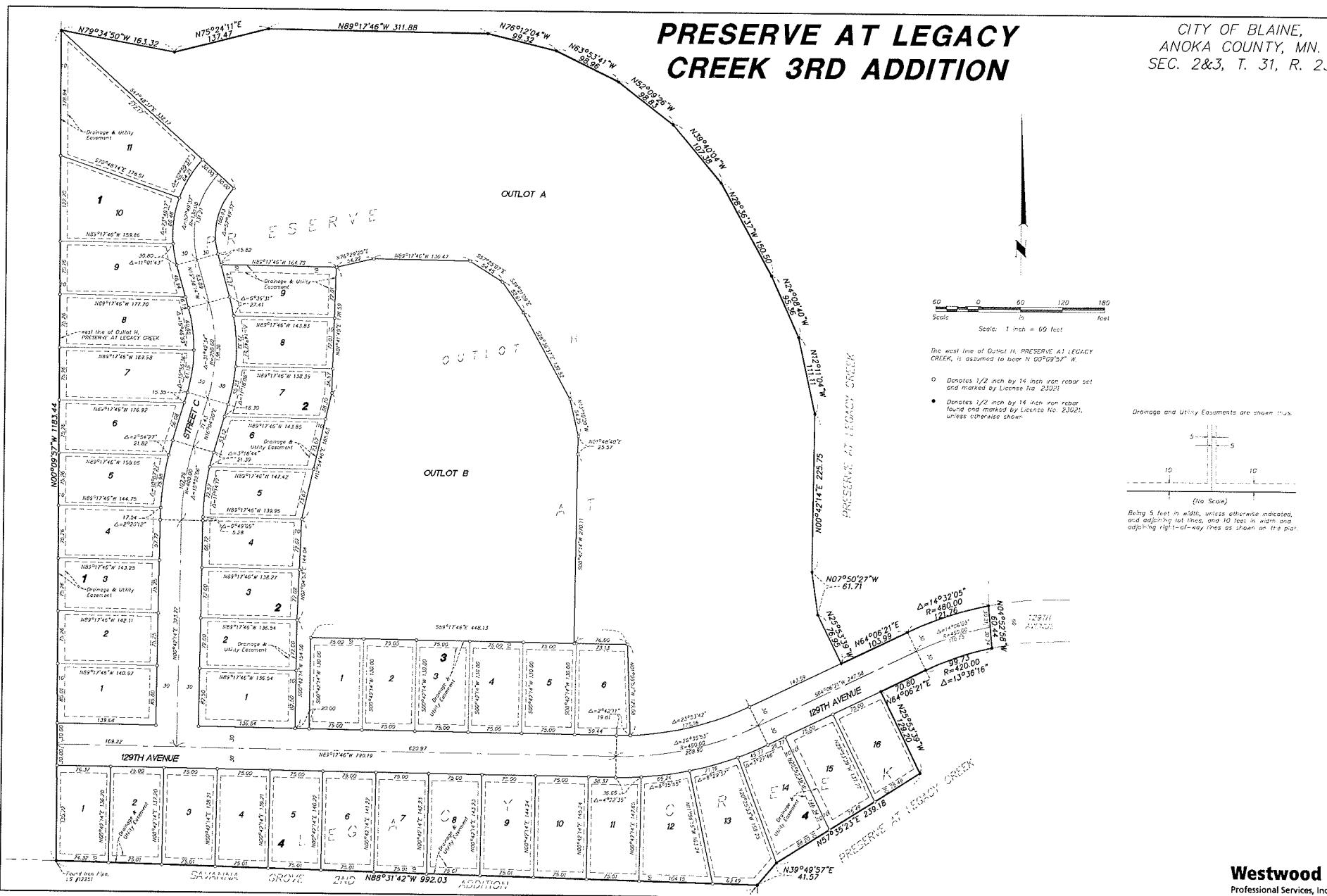
Case File No. 14-0059

Blaine Planning Department / 10801 Town Square Dr NE / Blaine, MN 55449 / (763) 785-6180



PRESERVE AT LEGACY CREEK 3RD ADDITION

CITY OF BLAINE,
ANOKA COUNTY, MN.
SEC. 2&3, T. 31, R. 23



Westwood
Professional Services, Inc.