

**Case File No. 10-0035**



# ST. CLAIR PARK 7TH ADDITION

City of Blaine  
County of Anoka  
Sec. 27, T31, R23

KNOW ALL PERSONS BY THESE PRESENTS: That Boulder Contracting, LLC, a Minnesota limited liability company, owner of the following described property:

Outlot B, ST. CLAIR PARK 3RD ADDITION, Anoka County, Minnesota.

AND

The South One Half of Lot 24, SPRING LAKE PARK WOODLAND, Anoka County, Minnesota.

Has caused the same to be surveyed and platted as ST. CLAIR PARK 7TH ADDITION and does hereby dedicate to the public for public use the drainage and utility easements and public way as shown by this plat.

In witness whereof said Boulder Contracting, LLC, a Minnesota limited liability company, has caused these presents to be signed by its proper officer this \_\_\_\_\_ day of \_\_\_\_\_, 20\_\_\_\_.

BOULDER CONTRACTING, LLC

\_\_\_\_\_, as General Manager

Brian Jansen

STATE OF MINNESOTA

COUNTY OF \_\_\_\_\_

This instrument was acknowledged before me this \_\_\_\_\_ day of \_\_\_\_\_, 20\_\_\_\_ by Brian Jansen, as General Manager of Boulder Contracting, LLC, a Minnesota limited liability company.

Notary Public, \_\_\_\_\_ County, Minnesota

My Commission Expires \_\_\_\_\_

I Jason E. Rud do hereby certify that this plat was prepared by me or under my direct supervision; that I am a duly Licensed Land Surveyor in the State of Minnesota; that this plat is a correct representation of the boundary survey; that all mathematical data and labels are correctly designated on this plat; that all monuments depicted on this plat have been set; that all water boundaries and wet lands, as defined in Minnesota Statutes, Section 505.01, Subd. 3, as of the date of this certificate are shown and labeled on this plat; and all public ways are shown and labeled on this plat.

Dated this \_\_\_\_\_ day of \_\_\_\_\_, 20\_\_\_\_.

Jason E. Rud, Licensed Land Surveyor  
Minnesota License No. 41578

STATE OF MINNESOTA

COUNTY OF \_\_\_\_\_

This instrument was acknowledged before me this \_\_\_\_\_ day of \_\_\_\_\_, 20\_\_\_\_ by Jason E. Rud.

Notary Public, \_\_\_\_\_ County, Minnesota

My Commission Expires \_\_\_\_\_

City Council, City of Blaine, Minnesota

This plat of ST. CLAIR PARK 7TH ADDITION was approved and accepted by the City Council of the City of Blaine, Minnesota at a regular meeting thereof held this \_\_\_\_\_ day of \_\_\_\_\_, 20\_\_\_\_ and said plat is in compliance with the provisions of Minnesota Statutes, Section 505.03, Subd. 2.

City Council, City of Blaine, Minnesota

By \_\_\_\_\_ Mayor

By \_\_\_\_\_ Clerk

County Surveyor

I hereby certify that in accordance with Minnesota Statutes, Section 505.021, Subd. 11, this plat has been reviewed and approved this \_\_\_\_\_ day of \_\_\_\_\_, 20\_\_\_\_.

Larry D. Hoium  
Anoka County Surveyor

COUNTY AUDITOR/TREASURER

Pursuant to Minnesota Statutes, Section 505.021, Subd. 9, taxes payable in the year 20\_\_\_\_ on the land hereinbefore described have been paid. Also, pursuant to Minnesota Statutes, Section 272.12, there are no delinquent taxes and transfer entered this \_\_\_\_\_ day of \_\_\_\_\_, 20\_\_\_\_.

Property Tax Administrator

By \_\_\_\_\_ Deputy

COUNTY RECORDER/REGISTRAR OF TITLES  
COUNTY OF ANOKA, STATE OF MINNESOTA

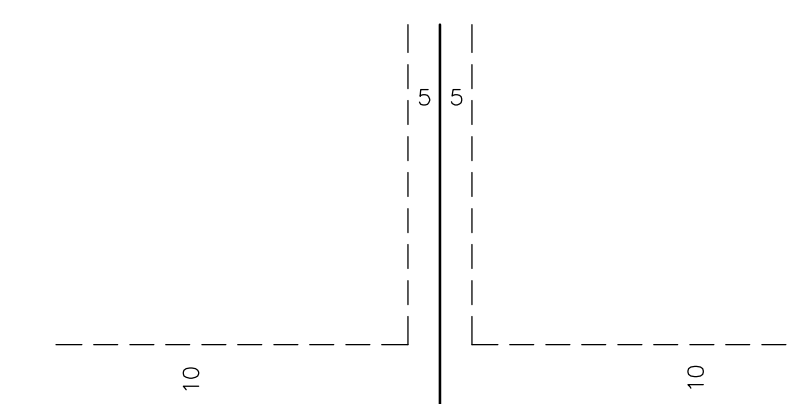
I hereby certify that this plat of ST. CLAIR PARK 7TH ADDITION was filed in the office of the County Recorder/Registrar of Titles for public record on this \_\_\_\_\_ day of \_\_\_\_\_, 20\_\_\_\_, at \_\_\_\_\_ o'clock \_\_\_\_\_M. and was duly recorded in Book \_\_\_\_\_ Page \_\_\_\_\_ as Document Number \_\_\_\_\_.

County Recorder/Registrar of Titles

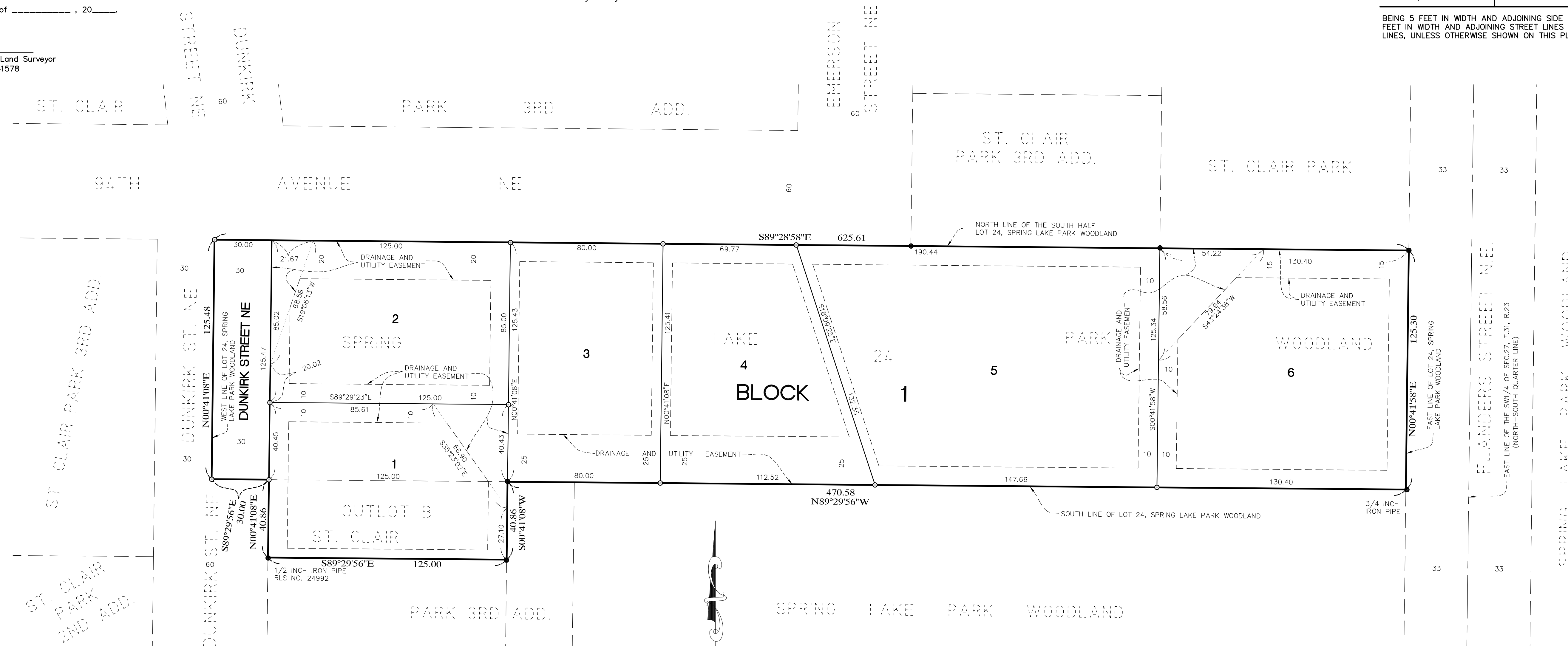
By \_\_\_\_\_ Deputy

## EASEMENT DETAIL

DRAINAGE AND UTILITY EASEMENTS ARE SHOWN THUS:

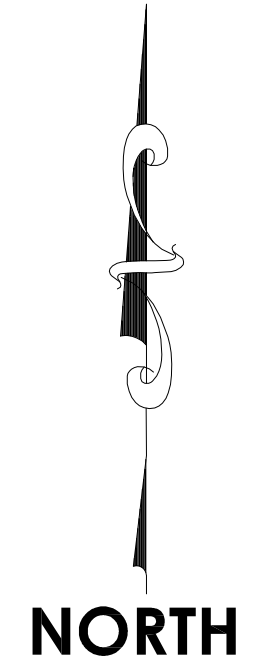


BEING 5 FEET IN WIDTH AND ADJOINING SIDE LOT LINES AND 10 FEET IN WIDTH AND ADJOINING STREET LINES AND REAR LOT LINES, UNLESS OTHERWISE SHOWN ON THIS PLAT.



**E. G. RUD & SONS, INC.**  
EST. 1977 Professional Land Surveyors

- DENOTES 1/2 INCH FOUND IRON MONUMENT WITH CAP MARKED RLS 9808, UNLESS OTHERWISE NOTED.
- DENOTES SET 1/2 INCH BY 14 INCH IRON PIPE MARKED BY RLS NO. 41578.



For the purposes of this plat the south line of Lot 24, SPRING LAKE PARK WOODLAND, Anoka County, Minnesota, is assumed to have a bearing of North 89 degrees 29 minutes 56 seconds West.

