

**Case File No. 15-0008**

Blaine Planning Department / 10801 Town Square Dr NE / Blaine, MN 55449 / (763) 785-6180



PRELIMINARY COPY  
UNRECORDED AS OF 3-25-15

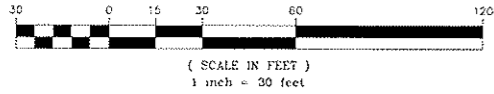
# WILLOWFIELD

City of Blaine  
County of Anoka  
Sec. 3, T31, R23



NORTH

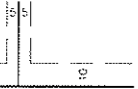
GRAPHIC SCALE



- DENOTES 1/2 INCH BY 14 INCH IRON PIPE MARKED BY RLS NO. 25341.
- DENOTES FOUND IRON MONUMENT
- ⊕ DENOTES ANOKA COUNTY CAST IRON MONUMENT

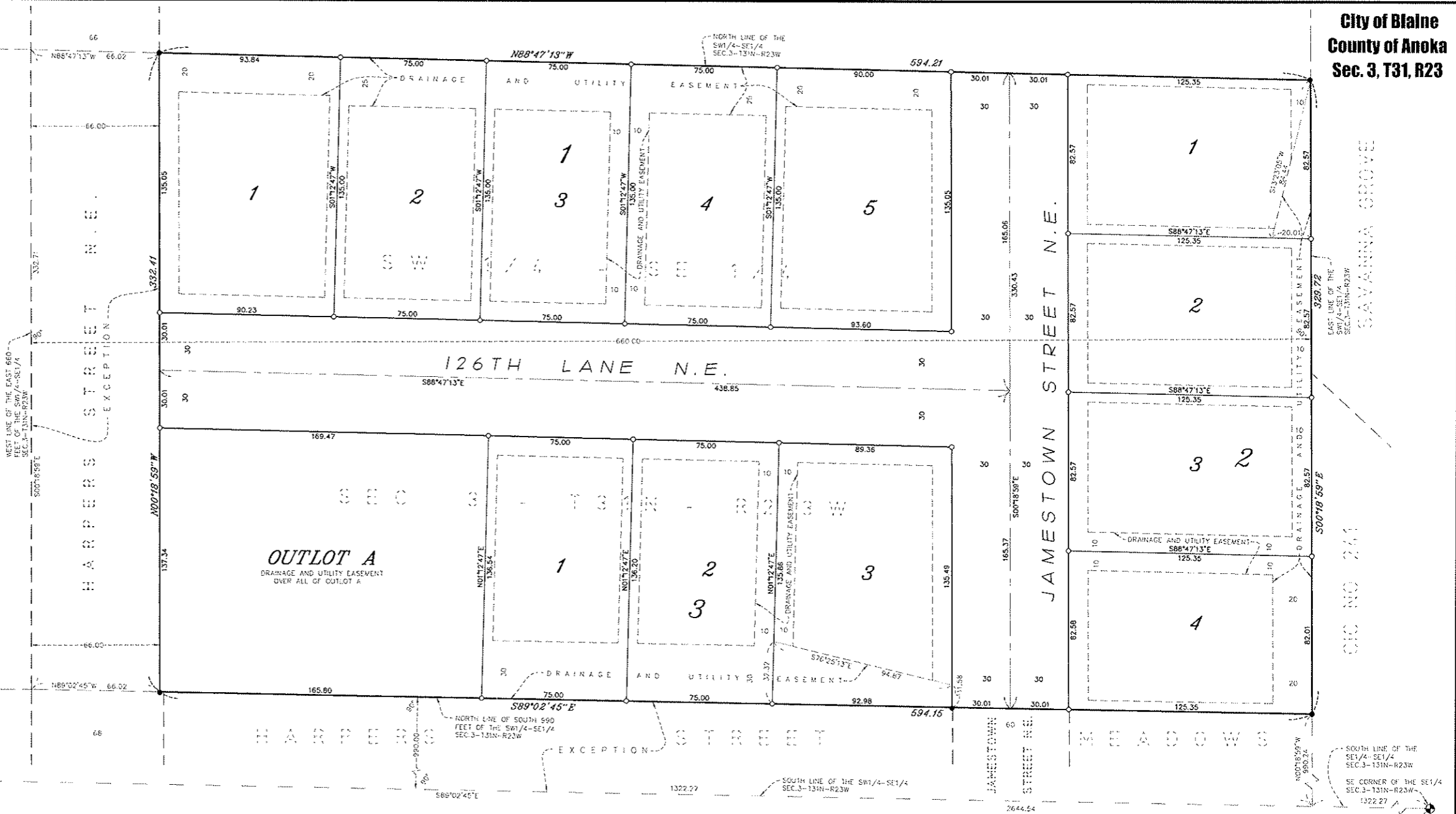
FOR THE PURPOSES OF THIS PLAT THE NORTH LINE OF THE SOUTHWEST QUARTER OF THE SOUTHEAST QUARTER, IS ASSUMED TO HAVE A BEARING OF NORTH 88 DEGREES 47 MINUTES 13 SECONDS WEST.

DRAINAGE AND UTILITY EASEMENTS ARE SHOWN THUS:



BEING 5 FEET IN WIDTH, AND ADJOINING SIDE LOT LINES, AND 10 FEET IN WIDTH AND ADJOINING RIGHT OF WAY LINES, AND REAR LOT LINES, UNLESS OTHERWISE SHOWN ON THIS PLAT.

SW CORNER OF THE SW 1/4-SE 1/4 SEC. 3-131N-R23W



SAVANNA GROVE

CLIC NO 274

KNOW ALL PERSONS BY THESE PRESENTS: That Harper Street Woods, LLC, a Minnesota limited liability company, owner and Tradition Capital Bank, a Minnesota corporation, mortgagee of the following described property:

The East 660 feet of the Southwest Quarter of the Southeast Quarter of Section 3, Township 31, Range 23, Anoka County, Minnesota, Except the South 990 feet thereof, and Except the West 66 feet thereof.

Have caused the same to be surveyed and platted as WILLOWFIELD and do hereby dedicate to the public for public use the public ways and the drainage and utility easements as shown by this plat.

In witness whereof said Harper Street Woods, LLC, a Minnesota limited liability company, has caused these presents to be signed by its proper officer this \_\_\_\_\_ day of \_\_\_\_\_, 20\_\_\_\_.

Barry B. Onufroak, Chief Manager

STATE OF MINNESOTA  
COUNTY OF \_\_\_\_\_

This instrument was acknowledged before me this \_\_\_\_\_ day of \_\_\_\_\_, 20\_\_\_\_, by Barry B. Onufroak, Chief Manager of Harper Street Woods, LLC, a Minnesota limited liability company, on behalf of the company.

Notary Public, \_\_\_\_\_ County, Minnesota  
My Commission Expires \_\_\_\_\_

In witness whereof said Tradition Capital Bank, a Minnesota corporation, has caused these presents to be signed by its proper officer this \_\_\_\_\_ day of \_\_\_\_\_, 20\_\_\_\_.

TRADITION CAPITAL BANK

Thomas M. Grobto, Vice President

STATE OF MINNESOTA  
COUNTY OF \_\_\_\_\_

This instrument was acknowledged before me this \_\_\_\_\_ day of \_\_\_\_\_, 20\_\_\_\_, by Thomas M. Grobto, Vice President of Tradition Capital Bank, a Minnesota corporation, on behalf of the corporation.

Notary Public, \_\_\_\_\_ County, Minnesota  
My Commission Expires \_\_\_\_\_

I Daniel W. Obermiller do hereby certify that this plat was prepared by me or under my direct supervision; that I am a duly Licensed Land Surveyor in the State of Minnesota; that this plat is a correct representation of the boundary survey, that all mathematical data and labels are correctly designated on this plat; that all monuments depicted on this plat have been, or will be correctly set within one year; that all water boundaries and wet lands, as defined in Minnesota Statutes, Section 505.01, Subd. 3, as of the date of this certificate are shown and labeled on this plat, and all public ways are shown and labeled on this plat.

Dated this \_\_\_\_\_ day of \_\_\_\_\_, 20\_\_\_\_.

Daniel W. Obermiller, Licensed Land Surveyor  
Minnesota License No. 25341

STATE OF MINNESOTA  
COUNTY OF \_\_\_\_\_

This instrument was acknowledged before me this \_\_\_\_\_ day of \_\_\_\_\_, 20\_\_\_\_, by Daniel W. Obermiller.

Notary Public, \_\_\_\_\_ County, Minnesota  
My Commission Expires \_\_\_\_\_

City Council, City of Blaine, Minnesota

This plat of WILLOWFIELD was approved and accepted by the City Council of the City of Blaine, Minnesota at a regular meeting thereof held this \_\_\_\_\_ day of \_\_\_\_\_, 20\_\_\_\_, and said plat is in compliance with the provisions of Minnesota Statutes, Section 505.03, Subd. 2.

City Council, City of Blaine, Minnesota

By \_\_\_\_\_ Mayor

By \_\_\_\_\_ Clerk

County Surveyor

I hereby certify that in accordance with Minnesota Statutes, Section 505.021, Subd. 11, this plat has been reviewed and approved this \_\_\_\_\_ day of \_\_\_\_\_, 20\_\_\_\_.

Larry D. Holm  
Anoka County Surveyor

County Auditor/Treasurer

Pursuant to Minnesota Statutes, Section 505.021, Subd. 9, taxes payable in the year 20\_\_\_\_ on the land hereinbefore described have been paid. Also, pursuant to Minnesota Statutes, Section 272.12, there are no delinquent taxes and transfer entered this \_\_\_\_\_ day of \_\_\_\_\_, 20\_\_\_\_.

Property Tax Administrator

By \_\_\_\_\_ Deputy

County Recorder/Registrar of Titles

County of Anoka, State of Minnesota

I hereby certify that this plat of WILLOWFIELD was filed in the office of the County Recorder/Registrar of Titles for public record on this \_\_\_\_\_ day of \_\_\_\_\_, 20\_\_\_\_, at \_\_\_\_\_ o'clock \_\_\_\_\_ M., and was duly recorded in Book \_\_\_\_\_ Page \_\_\_\_\_, as Document Number \_\_\_\_\_.

County Recorder/Registrar of Titles

By \_\_\_\_\_ Deputy

