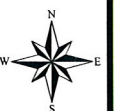


Case File No. 12-0027

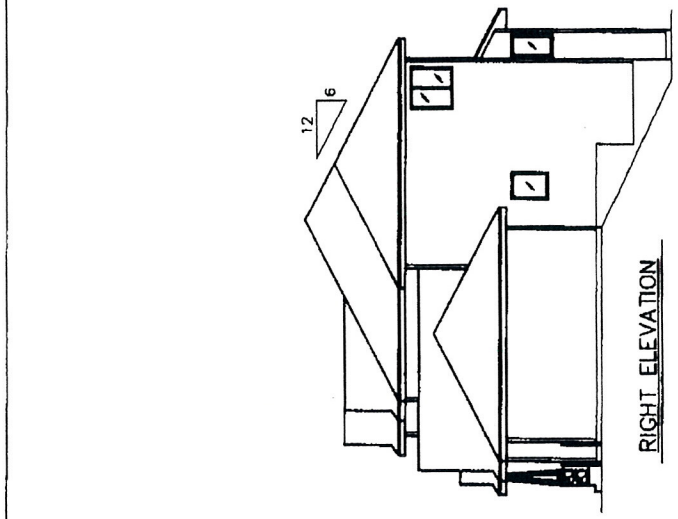


L6 B1 Gw2

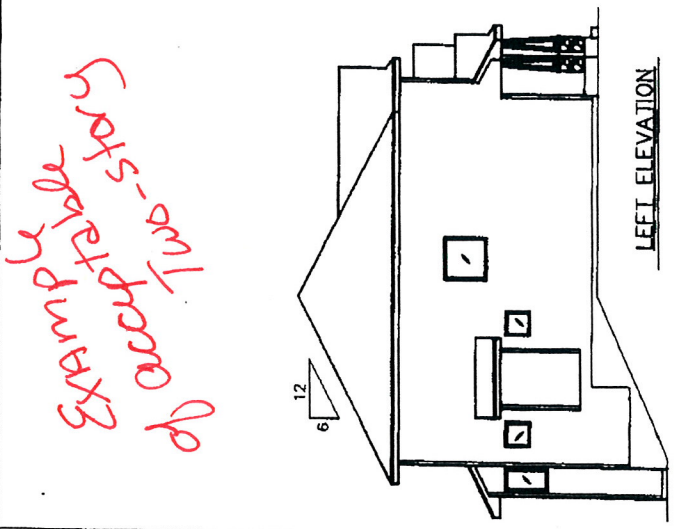
S W WOLD
HANNAH2/BLAINE MODEL

VERIFY ALL DIMENSIONS:
Although every possible effort is made to insure the accuracy of dimensions and openings, it is the contractor's responsibility to check and confirm all rough openings and other dimensions for accuracy. The individual performing the labor is responsible for using proper and expedient construction techniques for blind/draft settings not shown on drawings. Do not add drawings.

DATE:
3/9/2013

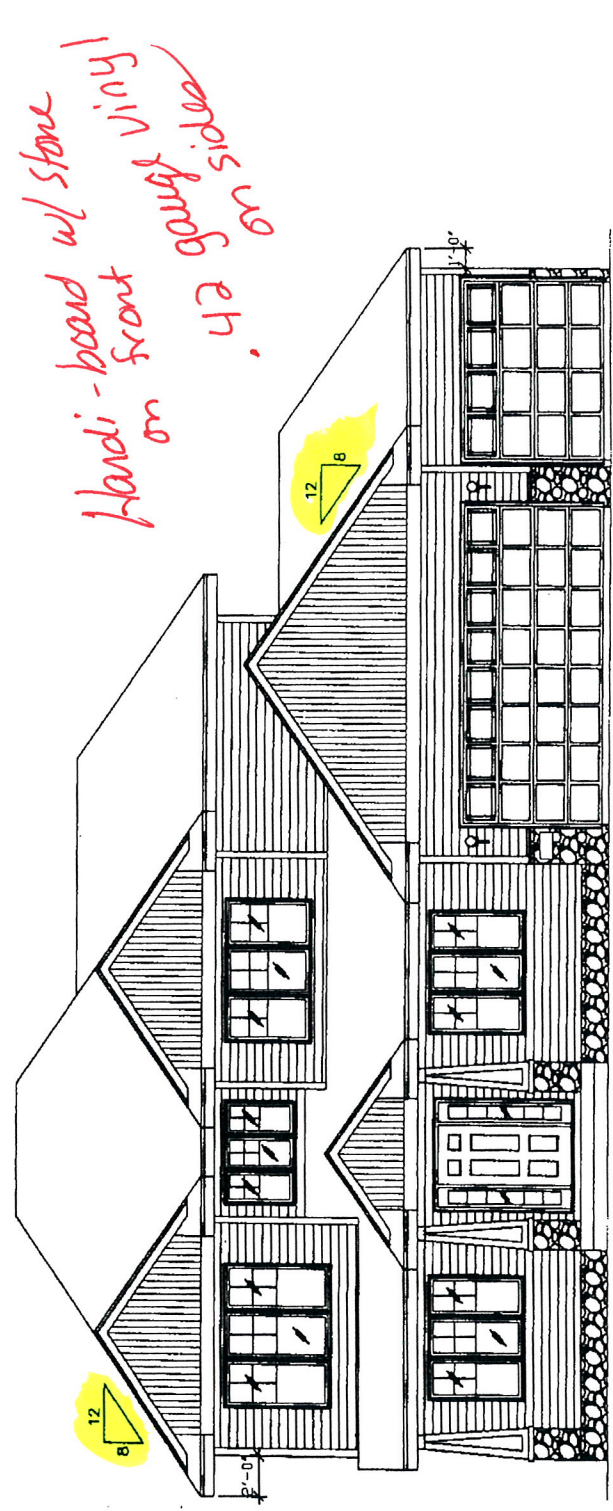


REAR ELEVATION
SCALE: 1/8" = 1'-0"



LEFT ELEVATION

Hand-drawn sketch of exterior of house with 5 stars in red.



FRONT ELEVATION
SCALE: 1/4" = 1'-0"

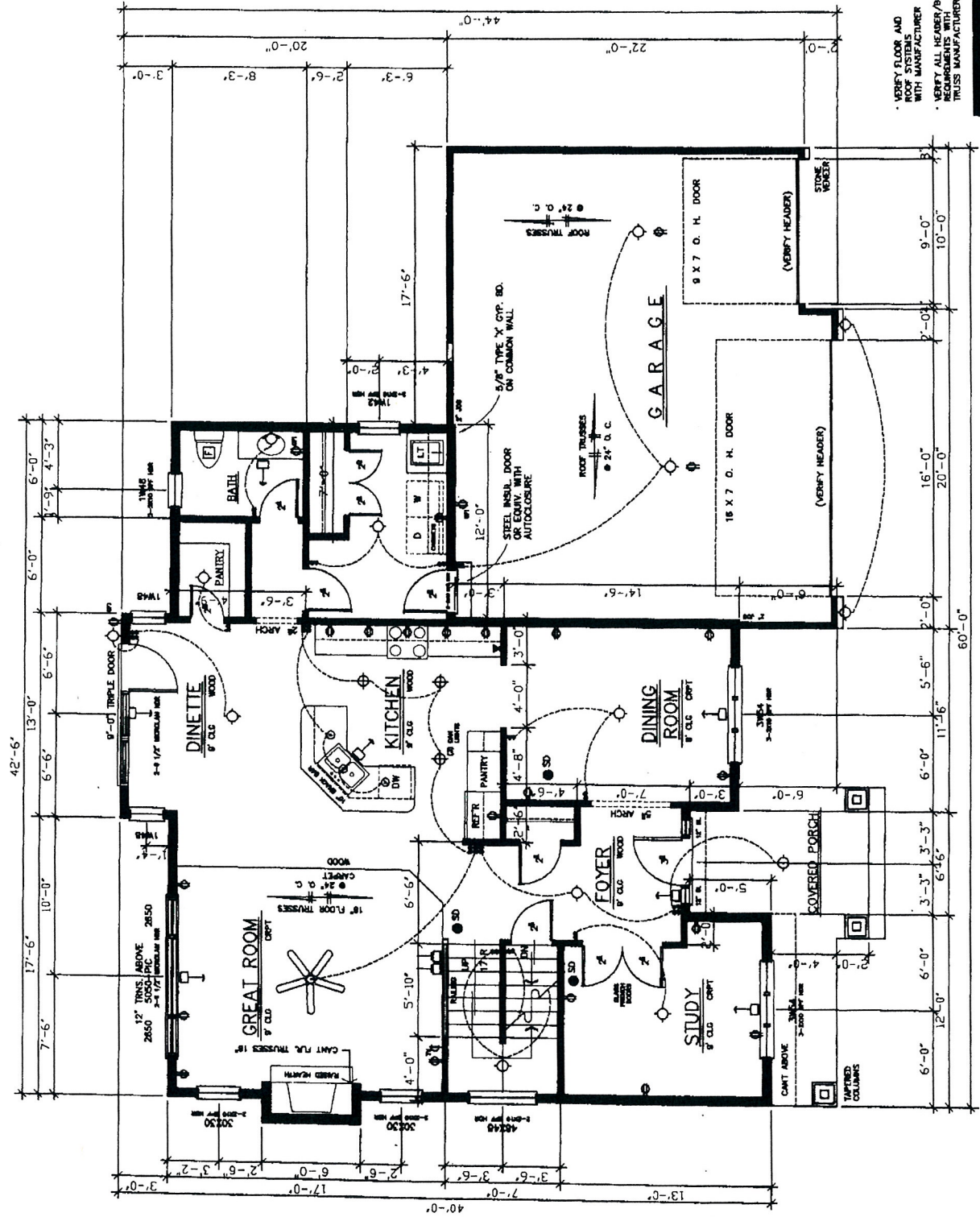
*Handi-board w/ stone
front on
vinyl
on gable sides*

S W WOLD
HANNAH2/BLAINE MODEL

VERIFY ALL DIMENSIONS:
Although every possible effort is made to insure the accuracy of dimensions and openings, it is the contractor's responsibility to check and confirm all rough openings and other dimensions for accuracy. The individual performing the work is responsible for using proper and accepted construction techniques for standard settings not shown on drawings. Do not scale drawing.

DATE: 5/9/2012

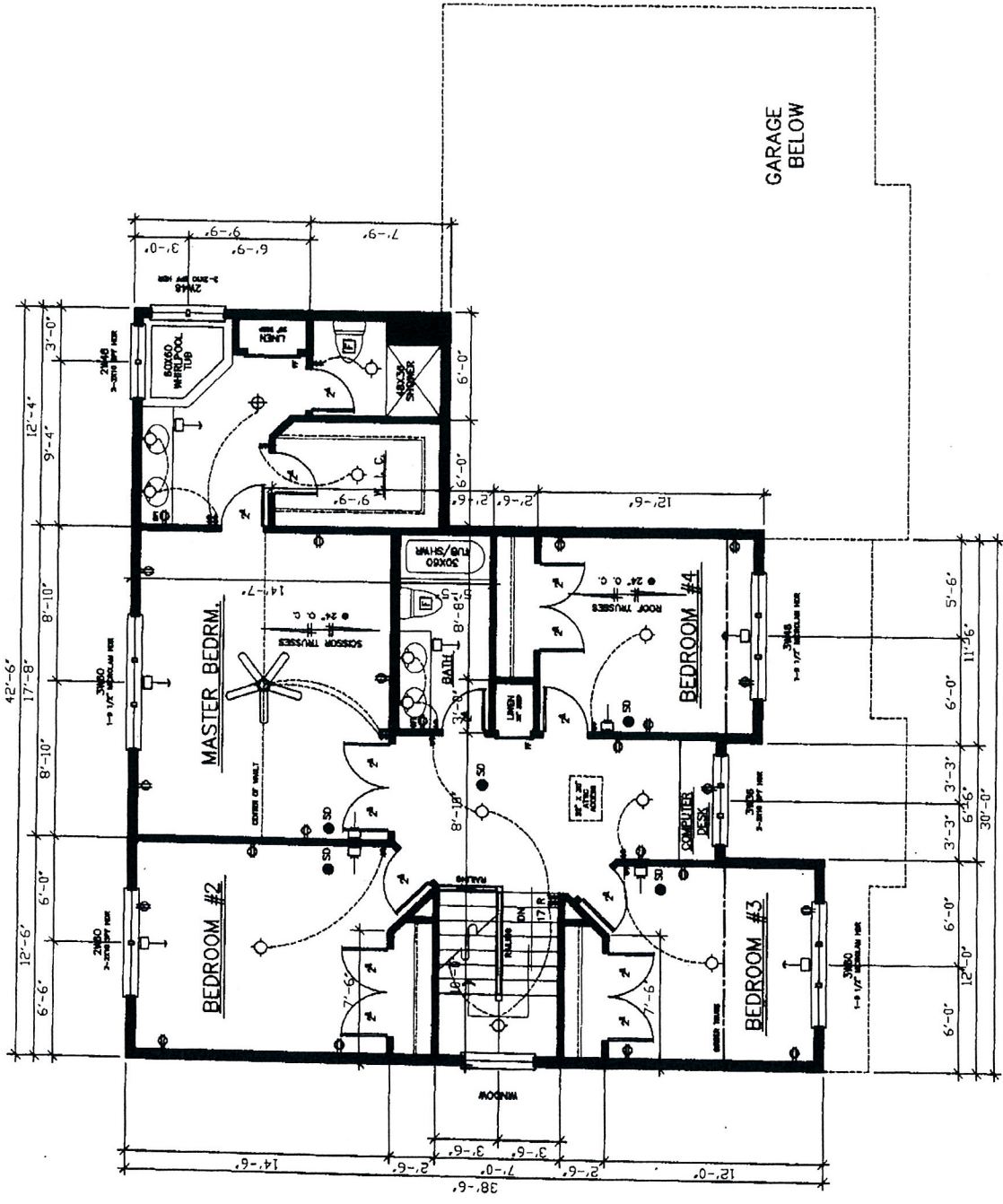
- VERIFY FLOOR AND ROOF SYSTEMS WITH MANUFACTURER
 - VERIFY ALL HEADER/BEAM REQUIREMENTS WITH TRUSS MANUFACTURER
- HOUSE - 2828 SQUARE FEET
GARAGE - 2828 SQUARE FEET
HOUSE INT. STUDS - 24" - 16" O.C.
HOUSE INT. STUDS - 24" - 16" O.C.
GARAGE STUDS - 24" - 15" O.C.



FIRST FLOOR PLAN
SCALE: 1/4" = 1' - 0"
1321 SQ. FT.

VERIFY FLOOR AND ROOF SYSTEMS WITH MANUFACTURER
 VERIFY ALL HEADER/BEAM REQUIREMENTS WITH TRUSS MANUFACTURER

SECOND FLOOR PLAN
 SCALE: 1/4" = 1'-0"
 1307 SQ. FT.



S W WOLD
 HANNAH2/BLAINE MODEL

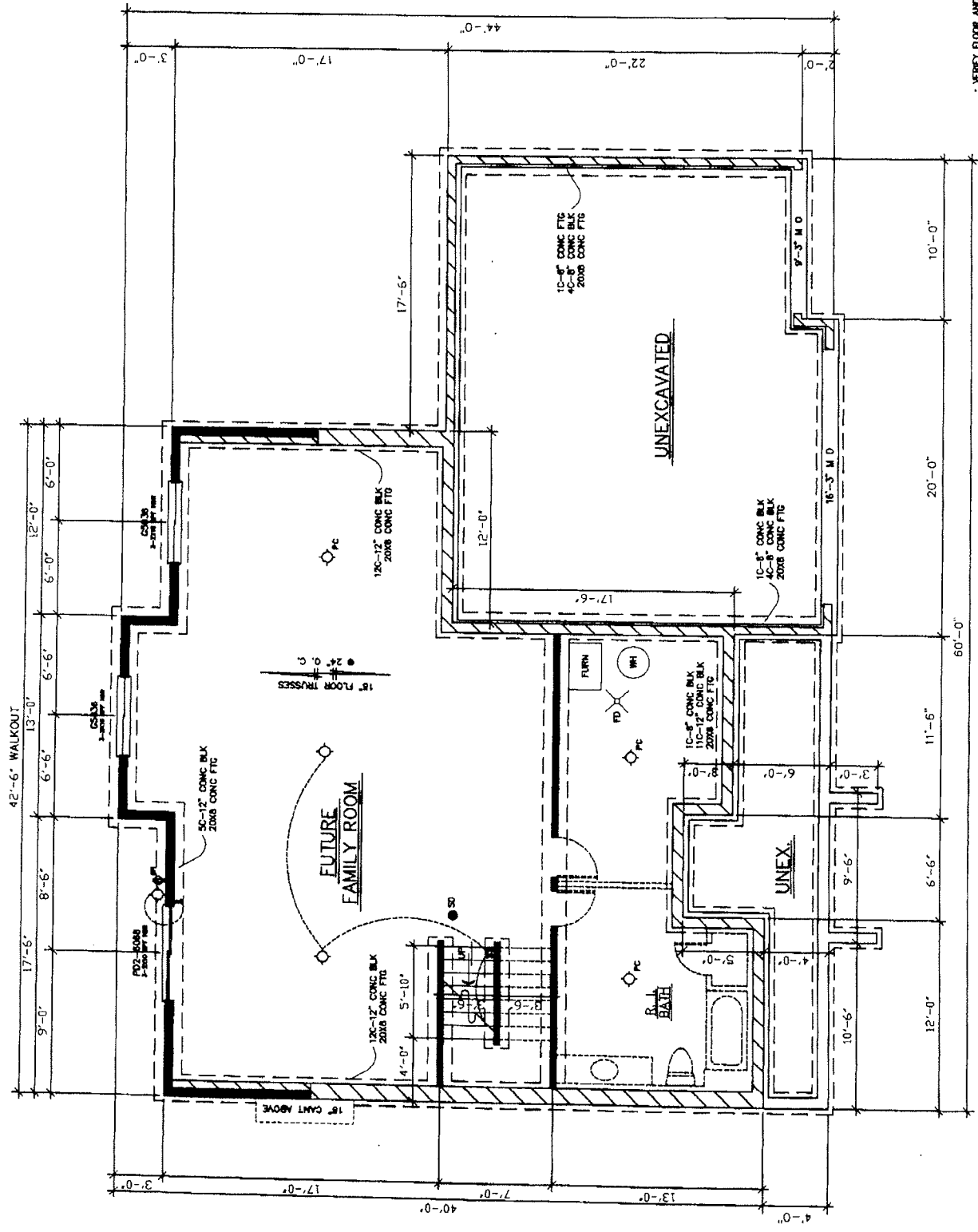
VERIFY ALL DIMENSIONS:
 Although every possible effort is made to insure the accuracy of dimensions and openings, it is the contractor's responsibility to check and confirm all rough openings and other dimensions for accuracy, the structural permitting techniques for standard settings not shown on drawing. Do not scale drawing.

DATE: 5/8/2012

VERIFY ALL DIMENSIONS:
Although every possible effort is made to insure the accuracy of dimensions
and openings, it is the contractor's responsibility to check and confirm all
the labor is responsible for using proper and accurate. The individual performing
techniques for standard settings not shown on drawings. Do not scale drawings.

DATE:
5/3/2012

- VERIFY FLOOR AND ROOF SYSTEMS WITH MANUFACTURER
- VERIFY ALL JOISTS/BEAM WITH MANUFACTURER
- VERIFY ALL TRUSS MANUFACTURER



FOUNDATION PLAN
SCALE: 1/4" = 1'-0"

S W WOLD

CROSS SECTION/HANNAH2BLAINE MODEL

VERIFY ALL DIMENSIONS:
 and openings. It is the contractor's responsibility to check the accuracy of dimensions
 Although every possible effort is made to ensure the accuracy of dimensions
 the labor is responsible for using proper and accepted construction
 techniques for standard settings not shown on drawings. Do not scale drawings.

- ASPHALT SHINGLES
 1-2 LAYER 15# ASPHALT FELT
 MANUFACTURED TRUSSES
 24" O.C. REGULAR ENERGY
 PROVIDE 1" MINIMUM AIR
 CHUTE EACH TRUSS SPACE
- STEEL TYP. ROOF EDGE
 1" X 6 FASMA
 ALUMINUM FASMA
 AND VENTED SOFFIT SYSTEM
- 3" PVC RACON PIPE @ 24" ON CENTER
 THROUGH ROOF 24" CLEARANCE REQ'D.
 ELECTRIC FAN IN TYPE

- DEL. 4 VINYL SOUNG
 1/2" OSB SHEATHING
 6" RIB FIBERGLASS BATT INSUL.
 4 MIL POLY VAPOR BARRIER
 1/2" GYPSUM BOARD

6" R19 FIBERGLASS INSUL.

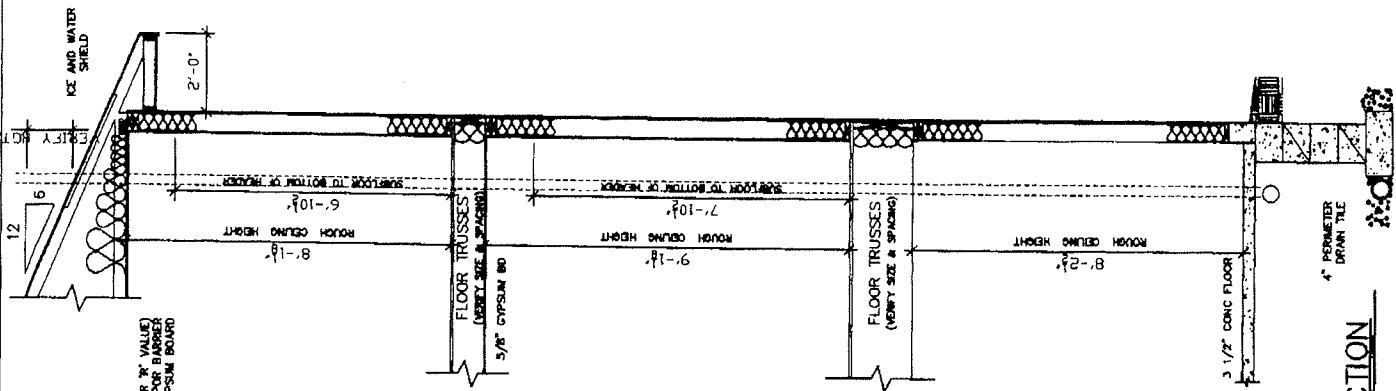
- DEL. 4 VINYL SOUNG
 1/2" OSB SHEATHING
 6" RIB FIBERGLASS BATT INSUL.
 4 MIL POLY VAPOR BARRIER
 1/2" GYPSUM BOARD

6" R19 FIBERGLASS INSUL.

- DEL. 4 VINYL SOUNG
 1/2" OSB SHEATHING
 6" RIB FIBERGLASS BATT INSUL.
 4 MIL POLY VAPOR BARRIER
 1/2" GYPSUM BOARD

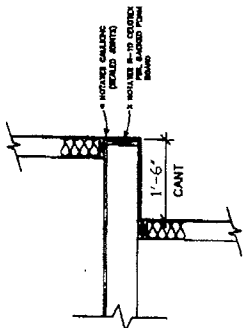
GRADE SLURPS 1/2" PER
 FOOT FROM BUILDING
 50-12" CONC BLK

WATERPROOFING
 BELOW GRADE
 REINFORCING AS REQUIRED
 (6" MIN. CONC. MIN. LOCAL CONDITIONS)
 GRAVEL BACKFILL
 20 X 6 CONC FIC

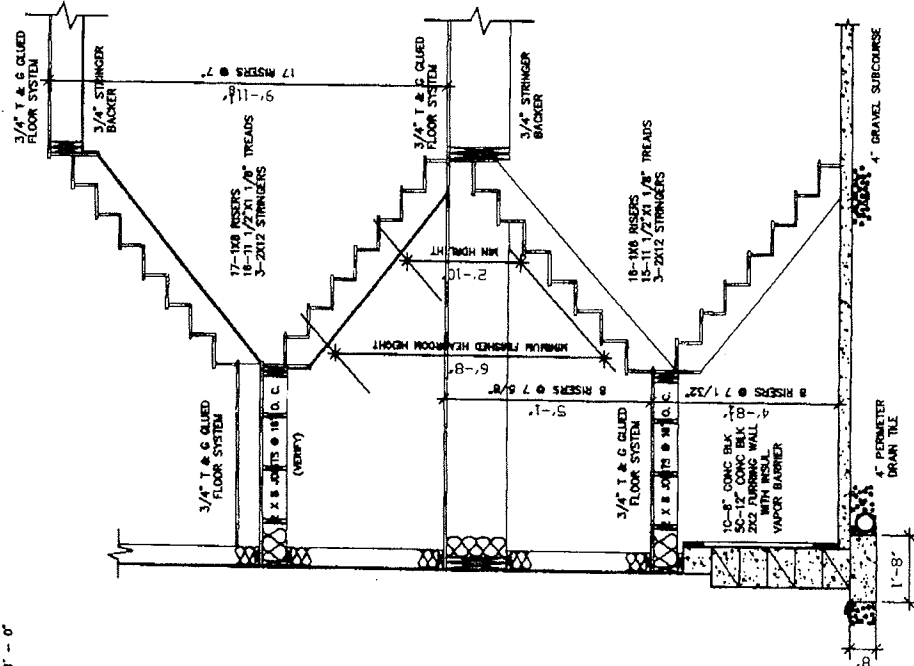


WALL SECTION
 SCALE: 1/2" = 1' - 0"

INSULATION
 4 MIL POLY VAPOR BARRIER
 5/8" GYPSUM BOARD



CANT SECTION
 SCALE: 1/2" = 1' - 0"



STAIR SECTION
 SCALE: 1/2" = 1' - 0"



Example of Rambler plan

8/12 Roof pitch

2,000 \square Rambler (or better)
 8/12 Roof pitch for gables facing the street
 Hard! Siding (or comparable) on front w/ stone or brick
 Sides of home }
 Vinyl - .42 gauge or better
 Steel
 Aluminum - .24 gauge or better
 options