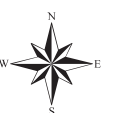


Case File No. 21-0033 **North Meadows 2nd Addition**



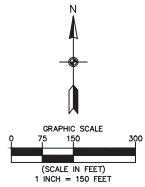
BlaineMN.gov

Blaine Planning Department / 10801 Town Square Dr NE / Blaine, MN 55449 / (763) 785-6180



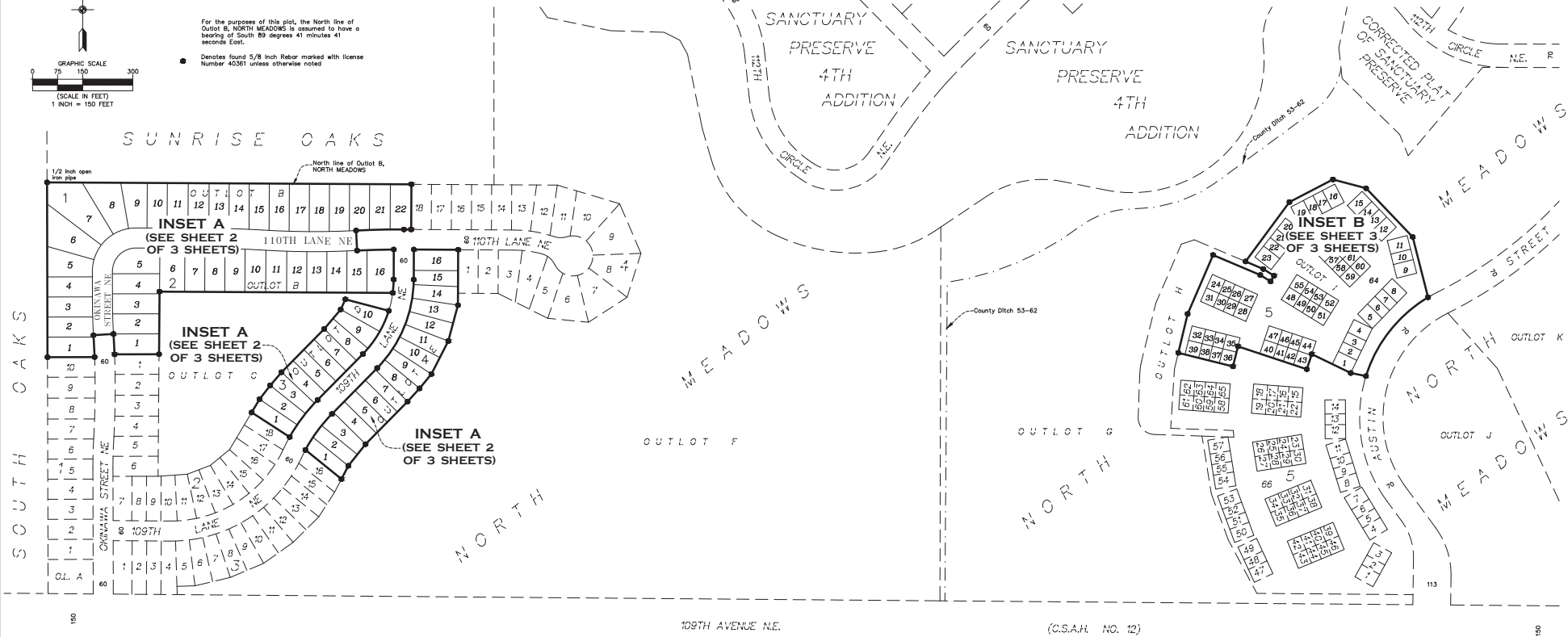
NORTH MEADOWS SECOND ADDITION

CITY OF BLAINE
COUNTY OF ANOKA
SEC. 14, TWP. 31, RGE. 23



For the purposes of this plat, the North line of Outlot B, NORTH MEADOWS is assumed to have a bearing of South 89 degrees 41 minutes 41 seconds East.

Denotes found 5/8 inch Rebar marked with license Number 40361 unless otherwise noted



KNOW ALL PERSONS BY THESE PRESENTS: That North Meadows LLC, a Minnesota limited liability company, owner of the following described property:

Outlot B, Outlot D, Outlot E, NORTH MEADOWS, according to the recorded plat thereof, Anoka County, Minnesota (Torrens Property)

And

Outlot I, NORTH MEADOWS, according to the recorded plat thereof, Anoka County, Minnesota. (Abstract Property)

Has caused the same to be surveyed and platted as NORTH MEADOWS SECOND ADDITION and does hereby dedicate to the public for public use the public ways and the drainage and utility easements as shown on this plat.

In witness whereof said North Meadows LLC, a Minnesota limited liability company, has caused these presents to be signed by its proper officer this ____ day of _____, 20__.

NORTH MEADOWS LLC
By: WELLINGTON PROPERTIES LLC, its Manager

Stephen B. Wellington, Jr., Chief Manager

STATE OF _____
COUNTY OF _____

This instrument was acknowledged before me on _____ by Stephen B. Wellington, Jr., Chief Manager of Wellington Properties LLC, a Minnesota limited liability company, manager of North Meadows LLC, a Minnesota limited liability company.

(Signed)

(Printed)
Notary Public, _____
My commission expires _____

I, Thomas R. Balluff, do hereby certify that this plat was prepared by me or under my direct supervision; that I am a duly Licensed Land Surveyor in the State of Minnesota; that this plat is a correct representation of the boundary survey; that all mathematical data and labels are correctly designated on this plat; that all monuments depicted on this plat have been, or will be correctly set within one year; that all water boundaries and wet lands, as defined in Minnesota Statutes, Section 505.01, Subd. 3, as of the date of this certificate are shown and labeled on this plat; and all public ways are shown and labeled on this plat.

Dated this ____ day of _____, 20__.

Thomas R. Balluff, Licensed Land Surveyor
Minnesota License No. 40361

STATE OF _____
COUNTY OF _____
This instrument was acknowledged before me on _____ by Thomas R. Balluff.

(Signed)

(Printed)
Notary Public, _____
My commission expires _____

CITY COUNCIL, CITY OF BLAINE, MINNESOTA

This plat of NORTH MEADOWS SECOND ADDITION was approved and accepted by the City Council of the City of Blaine, Minnesota at a regular meeting thereof held this ____ day of _____, 20__, and said plat is in compliance with the provisions of Minnesota Statutes, Section 505.03, Subd. 2.

CITY COUNCIL, CITY OF BLAINE, MINNESOTA

By _____ Mayor By _____ Clerk

COUNTY SURVEYOR

I hereby certify that in accordance with Minnesota Statutes, Section 505.021, Subd. 11, this plat has been reviewed and approved this ____ day of _____, 20__.

By: _____
Charles F. Otzen
Anoka County Surveyor

COUNTY AUDITOR/TREASURER

Pursuant to Minnesota Statutes, Section 505.021, Subd. 9, taxes payable in the year 20__ on the land hereinbefore described have been paid. Also, pursuant to Minnesota Statutes, Section 272.12, there are no delinquent taxes and transfer entered this ____ day of _____, 20__.

Property Tax Administrator
By: _____ Deputy

COUNTY RECORDER/REGISTRAR OF TITLES

County of Anoka, State of Minnesota

I hereby certify that this plat of NORTH MEADOWS SECOND ADDITION was filed in the office of the County Recorder/Registrar of Titles for public record on this ____ day of _____, 20__, at ____ o'clock ____ M., and was duly recorded as Document Number _____.

County Recorder/Registrar of Titles
By: _____ Deputy

COUNTY RECORDER/REGISTRAR OF TITLES

County of Anoka, State of Minnesota

I hereby certify that this plat of NORTH MEADOWS SECOND ADDITION was filed in the office of the County Recorder/Registrar of Titles for public record on this ____ day of _____, 20__, at ____ o'clock ____ M., and was duly recorded as Document Number _____.

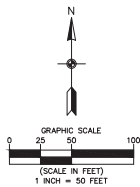
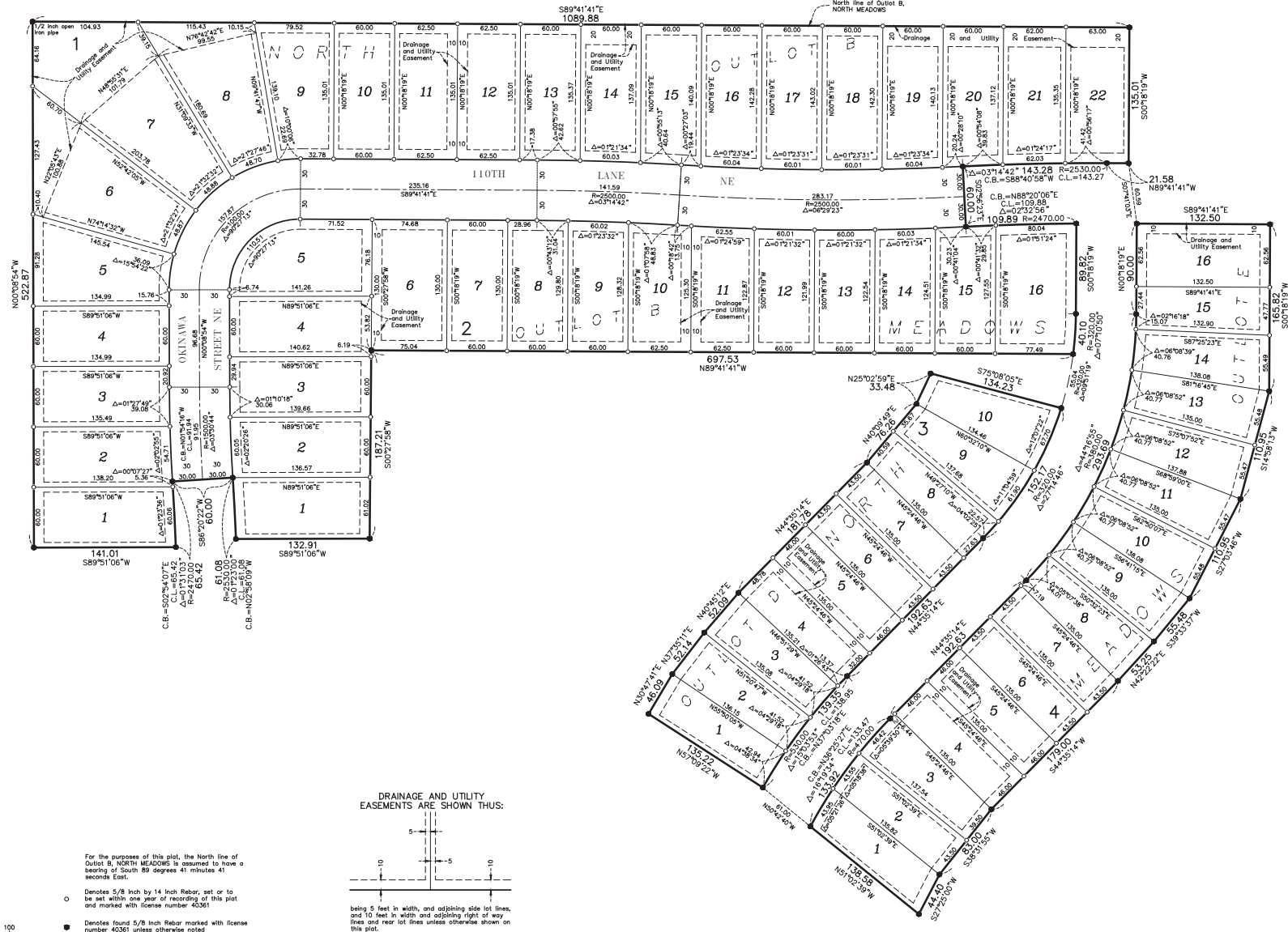
County Recorder/Registrar of Titles
By: _____ Deputy



INSET 'A'

NORTH MEADOWS SECOND ADDITION

CITY OF BLAINE
COUNTY OF ANOKA
SEC. 14, TWP. 31, RGE. 23

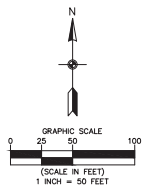
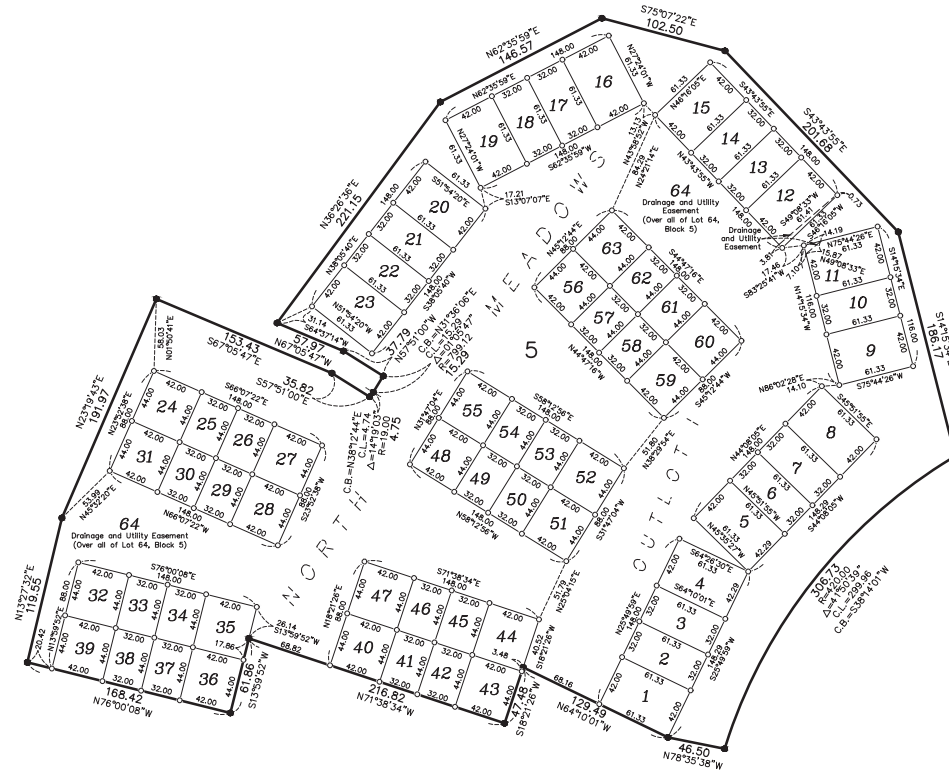


**CARLSON
MCCAIN**
ENGINEERING SURVEYING ENVIRONMENTAL

INSET 'B'

NORTH MEADOWS SECOND ADDITION

CITY OF BLAINE
COUNTY OF ANOKA
SEC. 14, TWP. 31, RGE. 23



For the purposes of this plat, the North line of
Quist & NORTH MEADOWS is assumed to have a
bearing of South 89 degrees 41 minutes 41
seconds East.

- Denotes 5/8 inch by 14 inch Rebar, set or to
be set within one year of recording of this plat
and marked with license number 40361
- Denotes found 5/8 inch Rebar marked with
license number 40361 unless otherwise noted